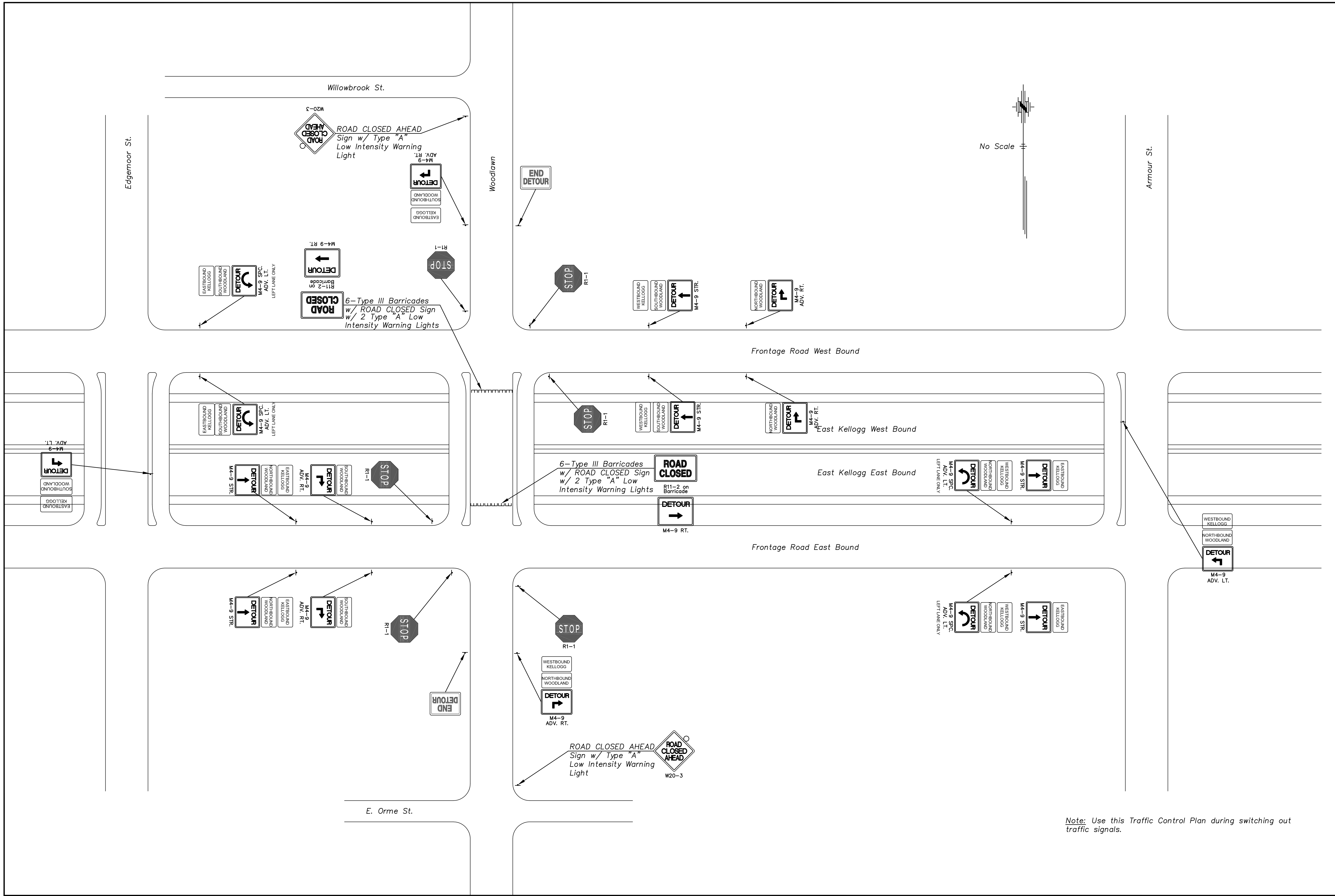


J:\2008Proj\086270\DWGS\28-Traffic Control Plan for signal switch over.dwg 3/14/2012 - 3:11pm



Note: Use this Traffic Control Plan during switching out traffic signals.

REVISED

SEAL:

Cook, Flatt & Strobel
ENGINEERS, P.A.

CFS PROJECT NO:
08-6270

CITY OF WICHITA, KANSAS
WOODLAWN ROAD
KELLOGG TO WILLOWBROOK

DESIGNED BY: _GAP_ DRAWN BY: _JMR_ CHECKED BY: _GAP_ DATE: _Mar_ 2009

SHEET TITLE:
TRAFFIC CONTROL PLAN

PROJECT NUMBER
472-84911

FINAL PLANS

SHEET NUMBER:
28 of 36