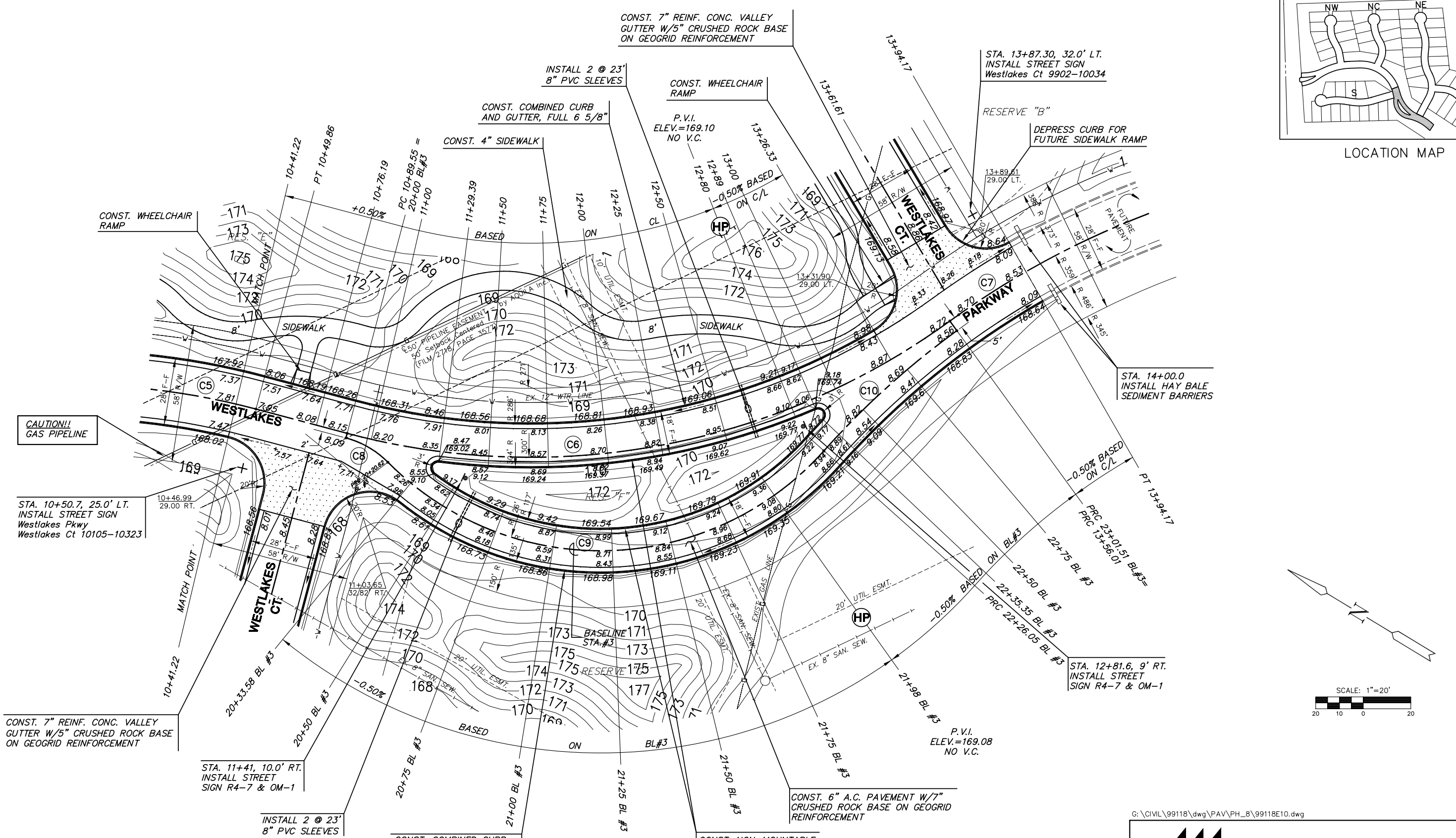


LOCATION MAP



CAUTION!!
GAS PIPELINE

STA. 10+50.7, 25.0' LT.
INSTALL STREET SIGN
Westlakes Pkwy
Westlakes Ct 10105-10323

CONST. 7" REINF. CONC. VALLEY
GUTTER W/5" CRUSHED ROCK BASE
ON GEOGRID REINFORCEMENT

STA. 11+41, 10.0' RT.
INSTALL STREET
SIGN R4-7 & OM-1

INSTALL 2 @ 23'
8" PVC SLEEVES

CONST. COMBINED CURB
AND GUTTER, FULL 6 5/8"

CONST. NON-MOUNTABLE
MEDIAN CURB AND
GUTTER (8")

CONST. 6" A.C. PAVEMENT W/7"
CRUSHED ROCK BASE ON GEOGRID
REINFORCEMENT

LEGEND

+ STREET SIGN & SIGN LOCATION
(SEE SIGN ASSEMBLY TABLE
FOR TYPE & STATION OF SIGN)

[Symbol] = VALLEY GUTTER

G:\CIVIL\99118\dwg\PAV\PH_8\99118E10.dwg



FOX RIDGE ADDITION
PROJECT NAME
WESTLAKES PARKWAY
MAIZE ENTRY PHASE
SHEET TITLE

SS DESIGN BY:	DM DRAWN BY:	SS CHECKED BY:
SEPTEMBER 2004	99118E10	11 / 50
DATE	JOB NO.	SHEET/OF



- NOTE:**
- TOP OF CURB ELEVATIONS SHOWN ARE FOR FULL CURB. CONSTRUCT CURB AS NOTED.
 - CONTRACTOR SHALL REMOVE ALL TREES WITHIN ROAD RIGHT-OF-WAY.
 - CURVE DATA FOR CURVES LABELED (C#) MAY BE FOUND ON SHEET 4.