

Sta. 0+31.83, Line 1
N1682779.10, E1677403.70
Install 24" RCP End Section
FL Out=1317.36
Contractor Shall Adjust End
of Flared End Section Such
That it is Flush With Exist.
Creek Bank

Install 7.1 S.Y. of Light
Stone Rip-Rap
Remove and Replace
18.1 S.Y. Rip-Rap In Kind

Sta. 0+52.70, Line 1
N1682785.62, E1677383.44
Install Standard Type "A"
Manhole
Top=1325.78
FL In=1319.81
FL Out=1317.79

Exist. San. Sewer Manhole
Top=1325.10
FL Out=1314.90
FL In=1314.90

Exist. San. Sewer Manhole
Top=1330.19
FL Out=1314.34
FL In=1314.34

Exist. San. Sewer Manhole
Top=1330.19
FL Out=1318.89
FL In=1318.89

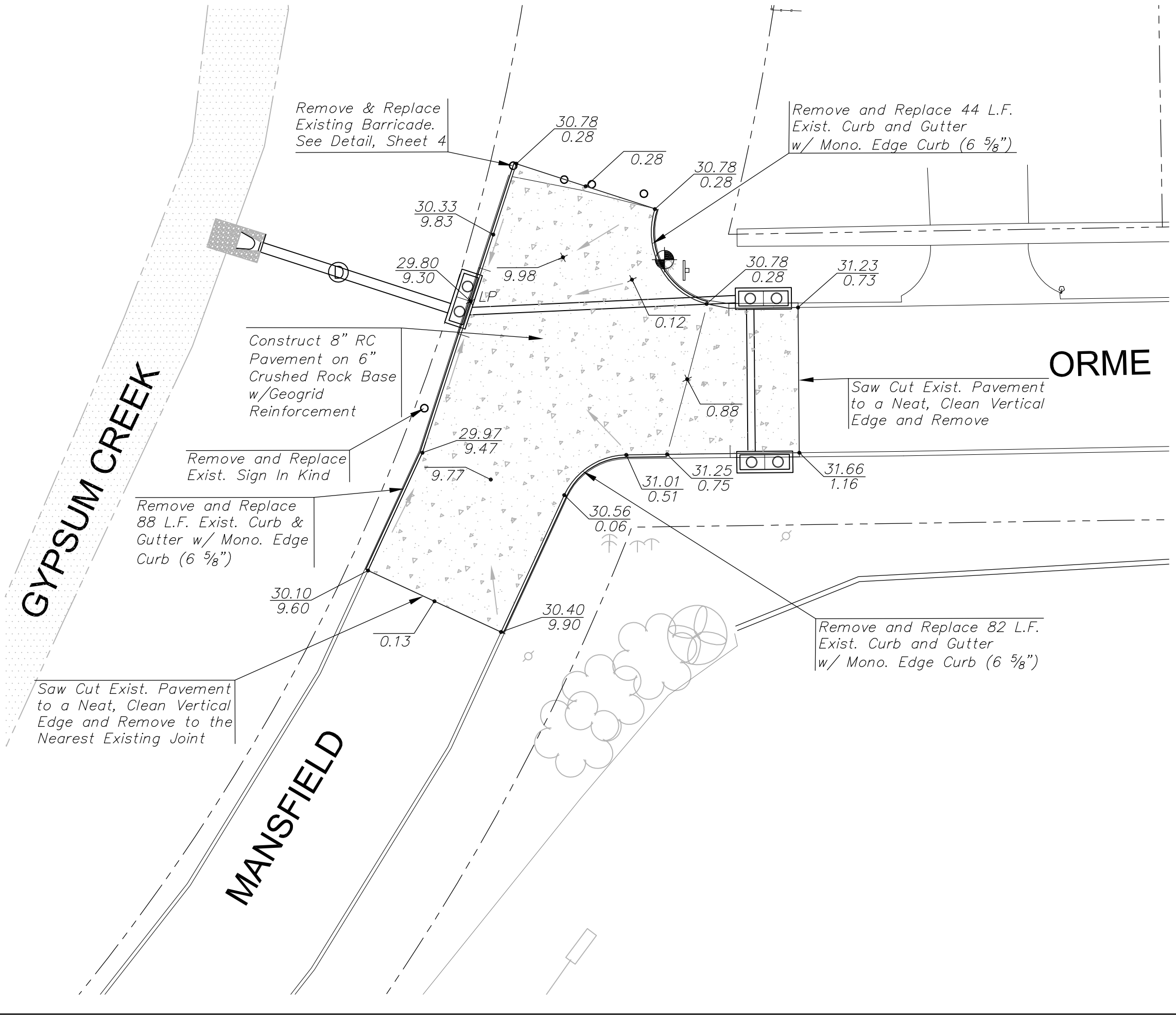
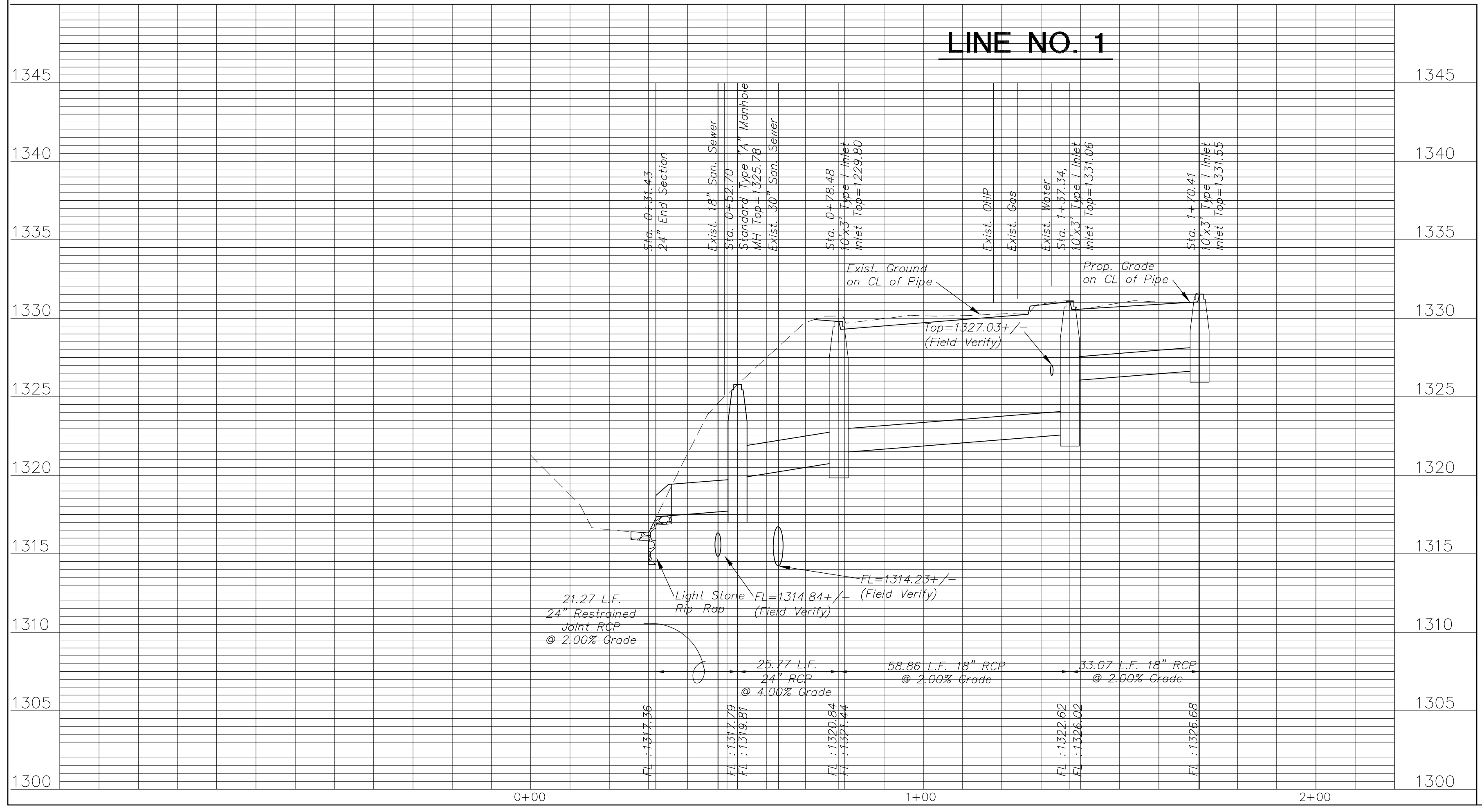
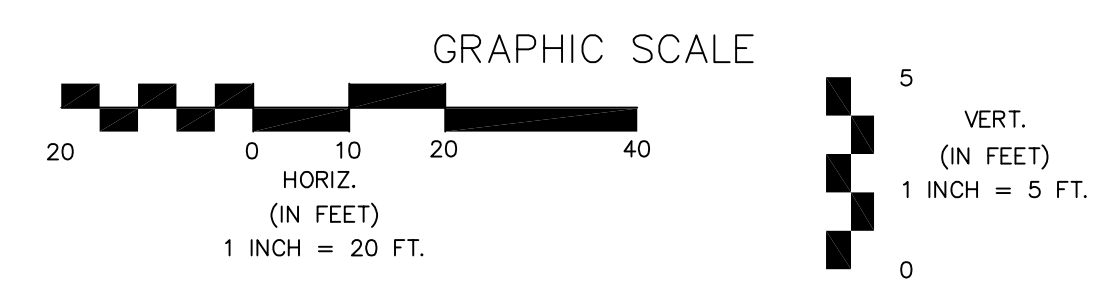
CAUTION!! Existing
Gas Line
Sta. 1+37.34, Line 1
N1682790.95, E1677300.13
Install 10"x3" Type I Inlet
Top=1331.06
FL Out=1322.62
FL In=1326.02
Provide Sediment Barrier

Sta. 1+70.41, Line 1
N1682824.02, E1677299.84
Install 10"x3" Type I Inlet
Top=1331.55
FL Out=1326.68
Provide Sediment Barrier

CAUTION!! Existing
Overhead Power
Sta. 0+78.48, Line 1
N1682793.58, E1677358.93
Install 10"x3" Type I Inlet
Top=1329.80
FL Out=1320.84
FL In=1321.44
Provide Sediment Barrier

- NOTES:
- Contractor to Field Verify location and Depth of All Utilities Prior to Construction and Report Findings to Project Engineer.
 - Contractor shall prepare a pavement jointing plan and submit to the Engineer for approval prior to commencing construction.

- TREE REMOVAL NOTES:
- Existing trees shall be protected from damage during construction operations.
 - Trees that are damaged or destroyed by the Contractor during construction shall be removed and replaced at the contractor's expense.
 - Existing trees shall not be removed without prior approval of the Engineer.
 - Tree removal shall be in accordance with the City of Wichita Standards.
 - Cost of tree removal shall be Subsidiary to Site Clearing.



HOT SPOTS - E INDIANAPOLIS & S MANSFIELD
STORM SEWER PLANS
LINE 1 PLAN AND PROFILE
CITY OF WICHITA, KANSAS
JAMES L. ARMOUR, P.E. - CITY ENGINEER
C.O.M. Proj. 465-84795 OCA No. 66000

POE & ASSOCIATES, INC.
CONSULTING ENGINEERS
5940 E. Central, Suite 200 Wichita, KS
67206-4242
Phone 316/685-4114 FAX 316/685-4444

POE

Engineer: S. SERVIS
Designer: S. SERVIS
Drawing: P:\101992\sitebase.dwg
Date: 3/26/2012

Sheet 2 of 16