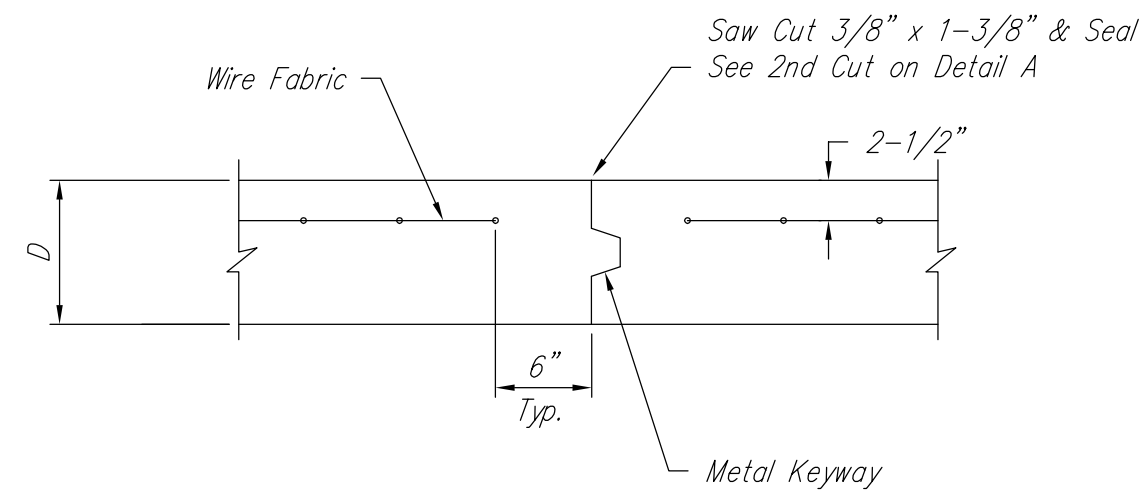
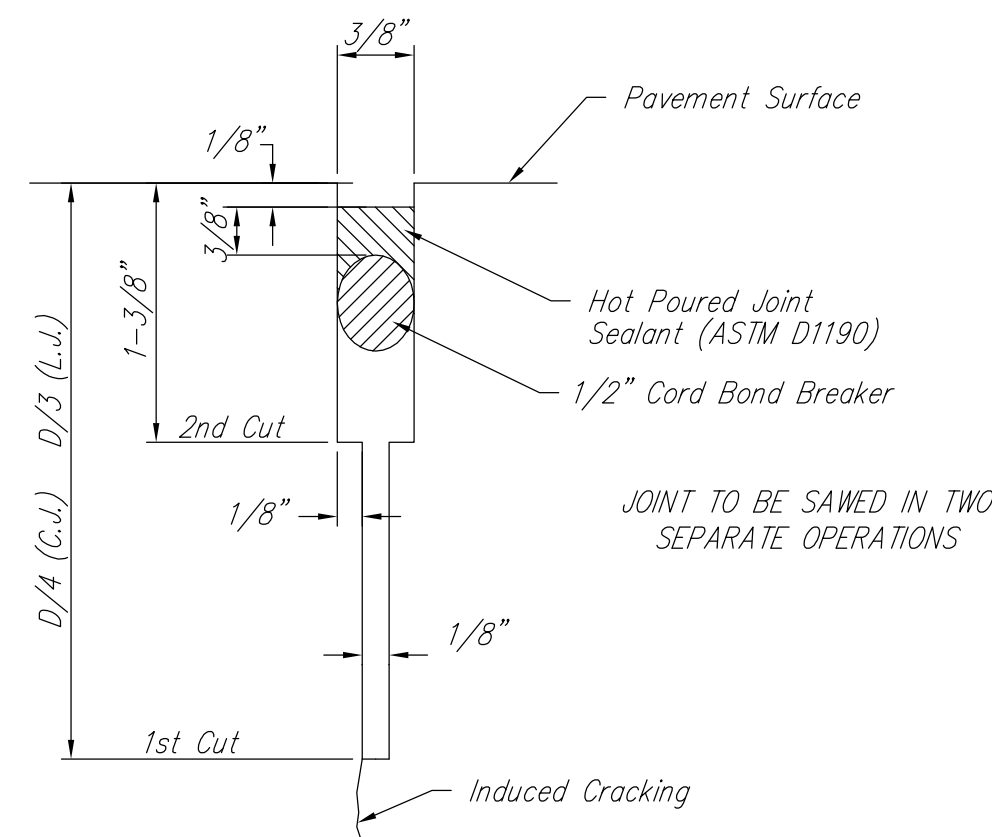


**EXPANSION JOINT**

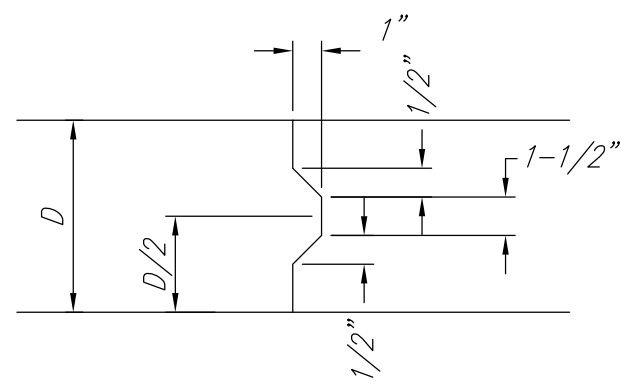
NOTE: Extra Thickness to be Subsidiary to Price of Square Yards Pavement



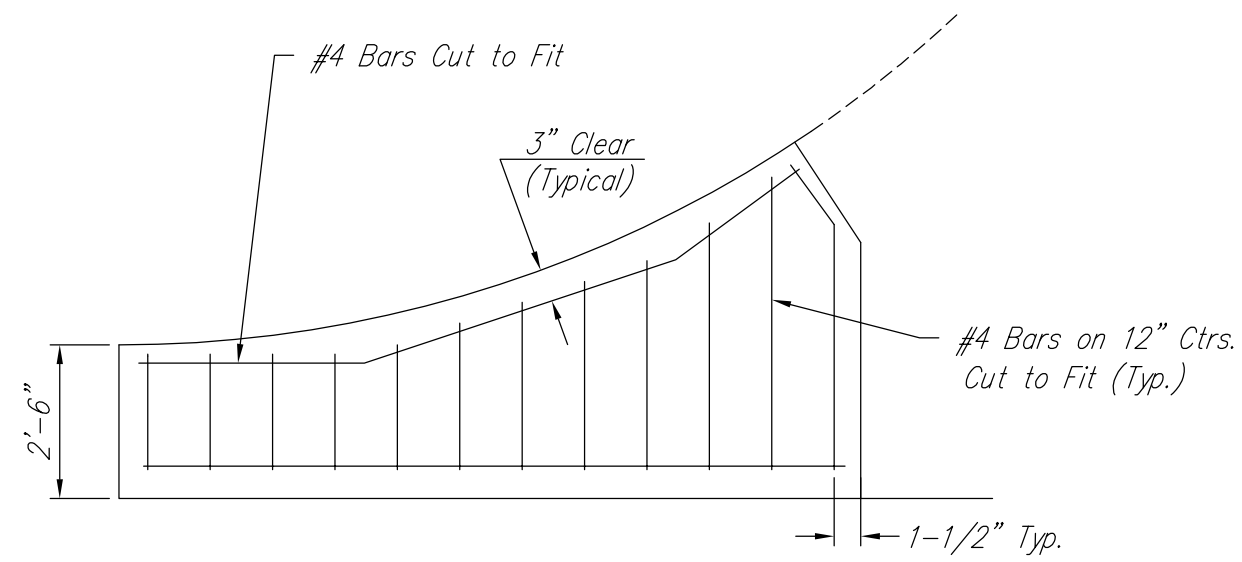
**OPTIONAL CONTRACTION JOINT**



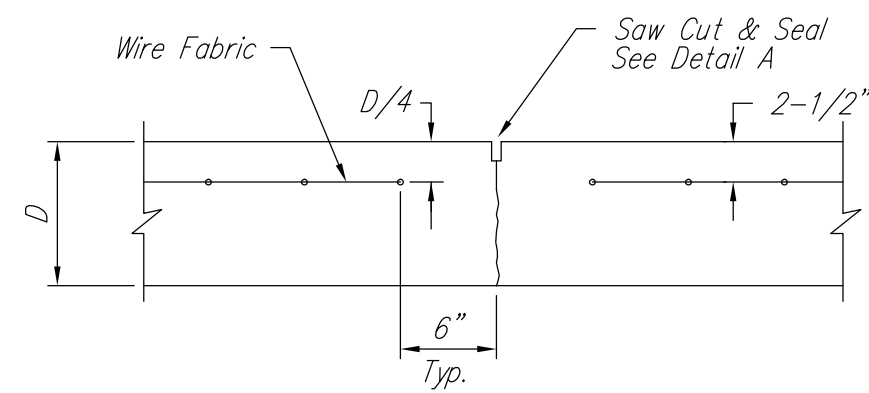
**SAW JOINT DETAIL**



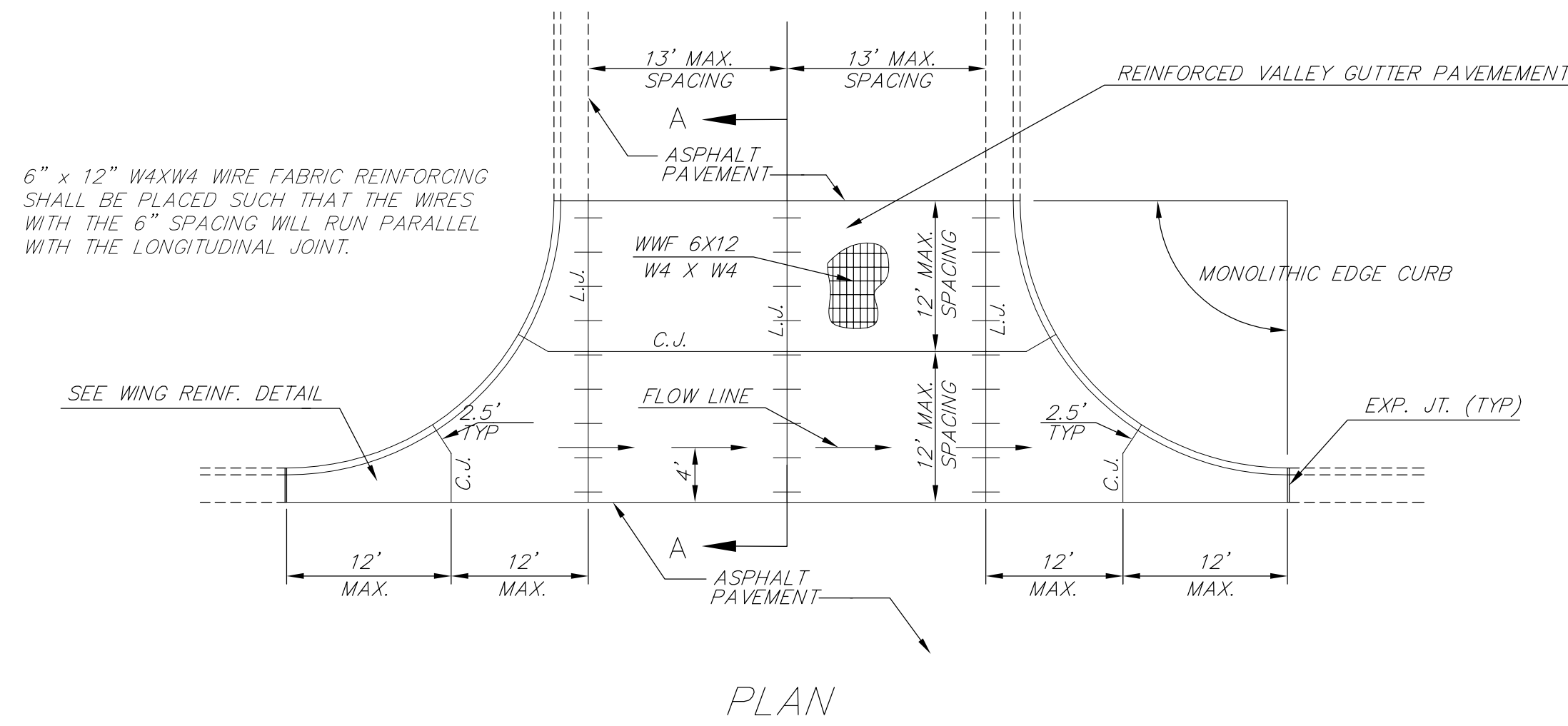
**KEYWAY DETAIL**



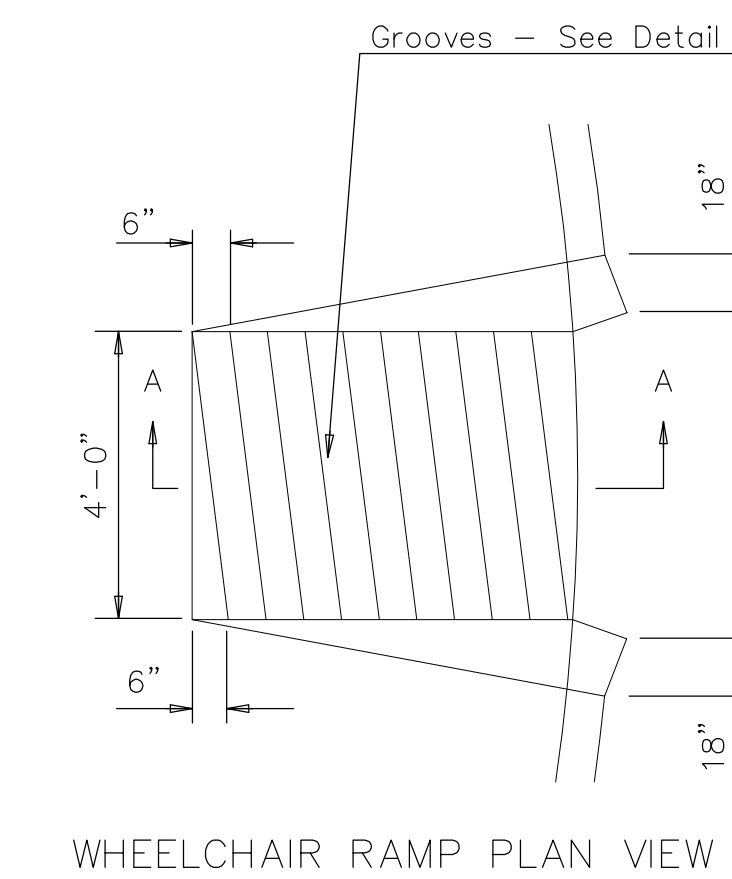
**WING REINFORCING DETAIL**



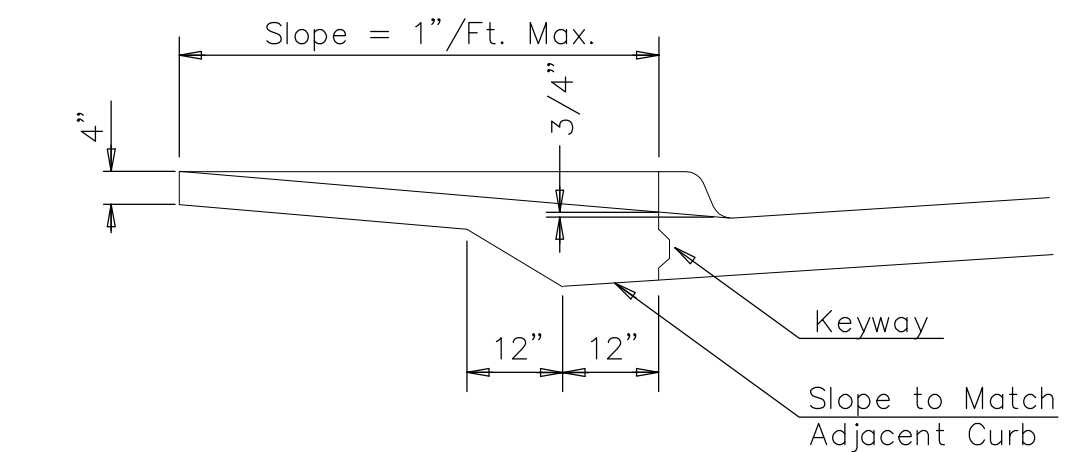
**CONTRACTION JOINT DETAIL (C.J.)**



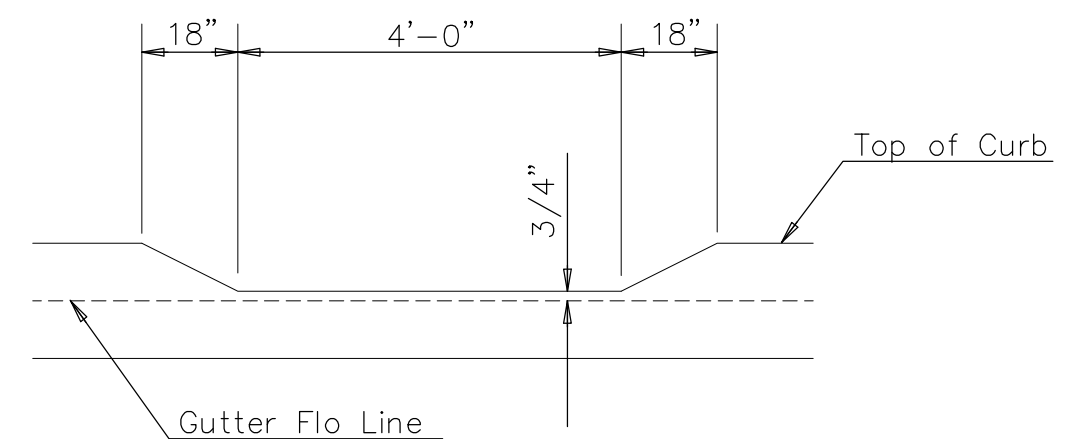
**PLAN**



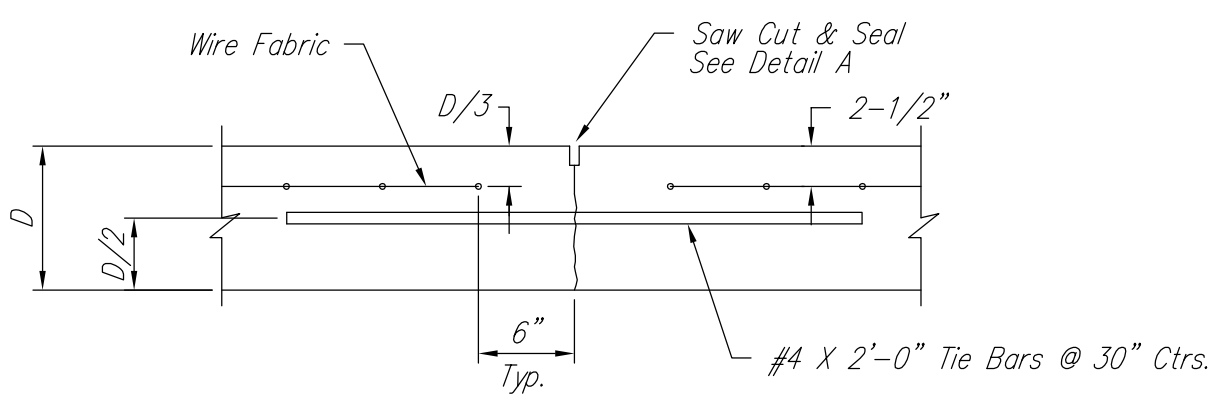
**WHEELCHAIR RAMP PLAN VIEW**



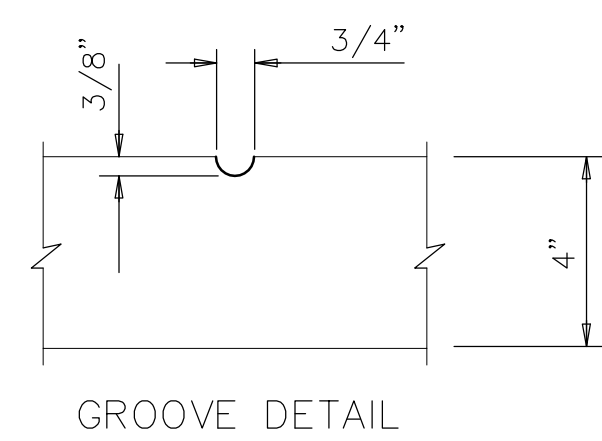
**SECTION A-A**



**DEPRESSED CURB DETAIL**

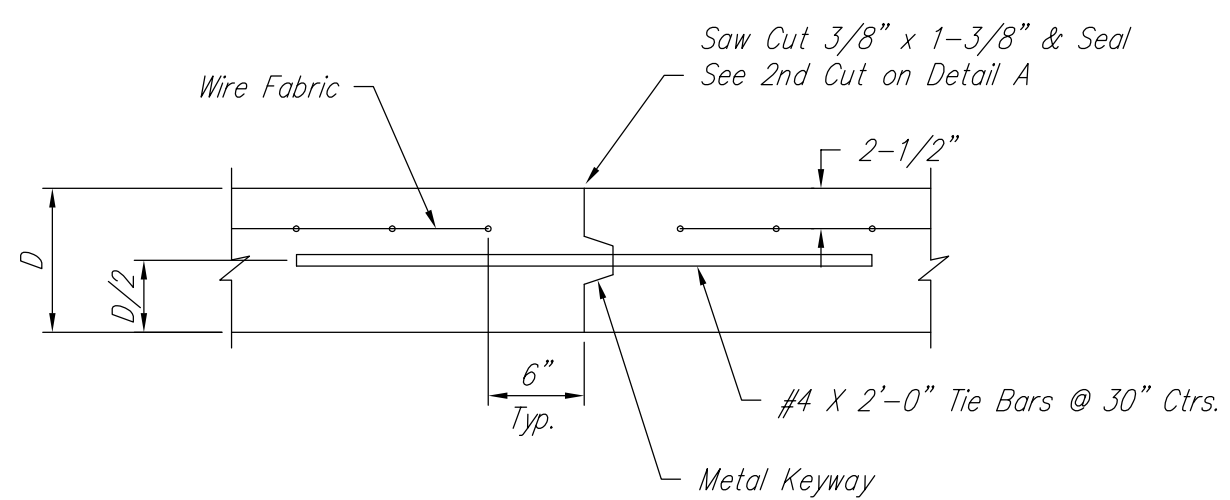


**LONGITUDINAL JOINT DETAIL (L.J.)**

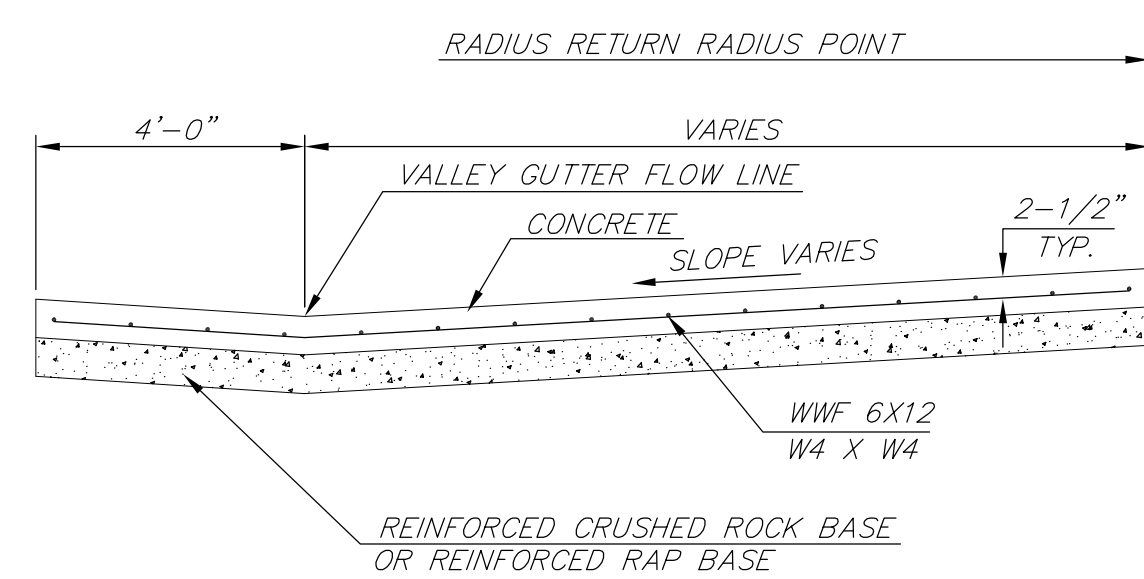


**GROOVE DETAIL**

**WHEELCHAIR RAMP DETAIL**



**OPTIONAL LONGITUDINAL JOINT DETAIL (L.J.)**

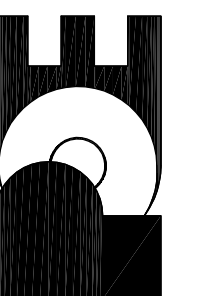


**SECTION A-A**

**REINFORCED VALLEY GUTTER DETAIL**

HOT SPOTS - E INDIANAPOLIS & S MANSFIELD  
 STORM SEWER PLANS  
 VALLEY GUTTER DETAILS  
 CITY OF WICHITA, KANSAS  
 JAMES L. ARMOUR, P.E. - CITY ENGINEER  
 C.O.M. Proj. 465-84795 OCA No. 66800

POE & ASSOCIATES, INC.  
 CONSULTING ENGINEERS  
 5940 E. Central, Suite 200 - Wichita, KS  
 67206-8242  
 Phone 316/685-4114 - FAX 316/685-4444



<b>VALLEY GUTTER DETAILS</b>			
<b>WHEELCHAIR RAMP</b>			
<b>DETAILS</b>			
CITY ENGINEER			
JAMES L. ARMOUR, P.E., L.S.			
ACTING			
PROJECT NUMBER	OCA NUMBER	DATE	
XXX-XXXXX	XXXXXX	MM/YY	
CITY ENGINEER'S OFFICE		DESIGN	DRAWN
CITY HALL - SEVENTH FLOOR		ABC	DEF
455 NORTH MAIN STREET		SHEET	
WICHITA, KANSAS 67202-1620		X OF X	
(316) 268-4501			
(316) 268-4114 FAX			

Engineer: S. SERVIS  
 Designer: S. SERVIS  
 Drawing: P: 101992/sitebase.dwg  
 Date: DECEMBER 2011

No.	Date	By	Approved	Revision