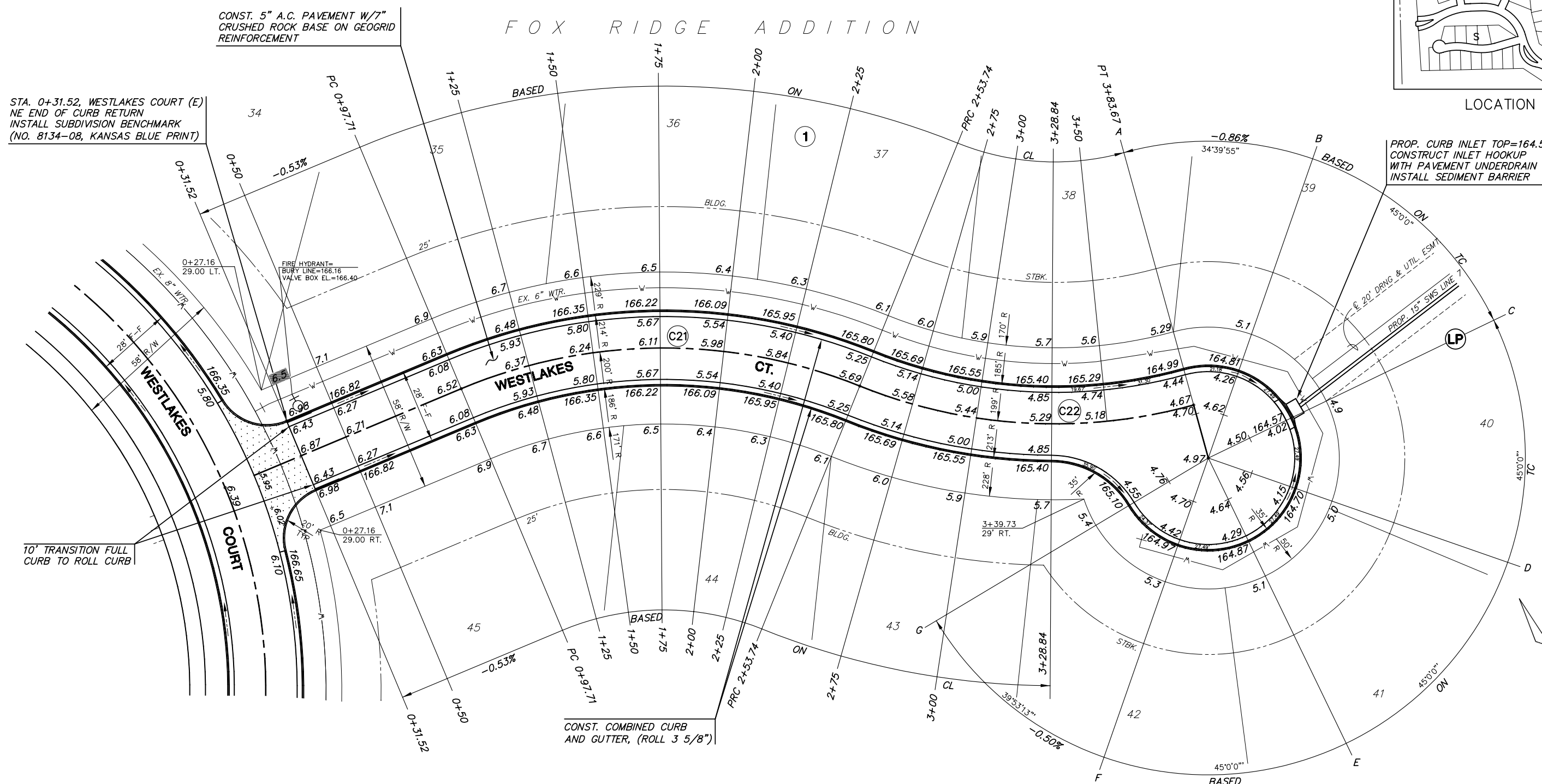


LOCATION MAP

FOX RIDGE ADDITION



STA. 0+31.52, WESTLAKES COURT (E)
NE END OF CURB RETURN
INSTALL SUBDIVISION BENCHMARK
(NO. 8134-08, KANSAS BLUE PRINT)

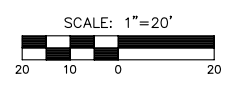
CONST. 5" A.C. PAVEMENT W/7"
CRUSHED ROCK BASE ON GEOGRID
REINFORCEMENT

PROP. CURB INLET TOP=164.57
CONSTRUCT INLET HOOKUP
WITH PAVEMENT UNDERDRAIN
INSTALL SEDIMENT BARRIER

10' TRANSITION FULL
CURB TO ROLL CURB

CONST. COMBINED CURB
AND GUTTER, (ROLL 3 5/8")

FOX RIDGE ADDITION



- NOTE:
1. TOP OF CURB ELEVATIONS SHOWN ARE FOR FULL CURB. CONSTRUCT CURB AS NOTED.
 2. CONTRACTOR SHALL REMOVE ALL TREES WITHIN ROAD RIGHT-OF-WAY.
 3. CURVE DATA FOR CURVES LABELED (C#) MAY BE FOUND ON SHEET 4.

G:\CIVIL\99118\dwg\PAV\PH_8\99118E5.dwg



FOX RIDGE ADDITION		
PROJECT NAME		
WESTLAKES COURT (E) - PHASE 8		
SHEET TITLE		
SS DESIGN BY:	DM DRAWN BY:	GA CHECKED BY:
SEPTEMBER 2004 DATE	99118E5 JOB NO.	18 / 50 SHEET/OF