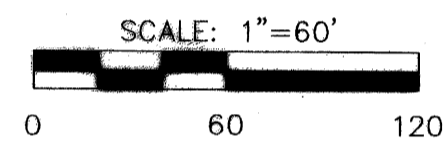
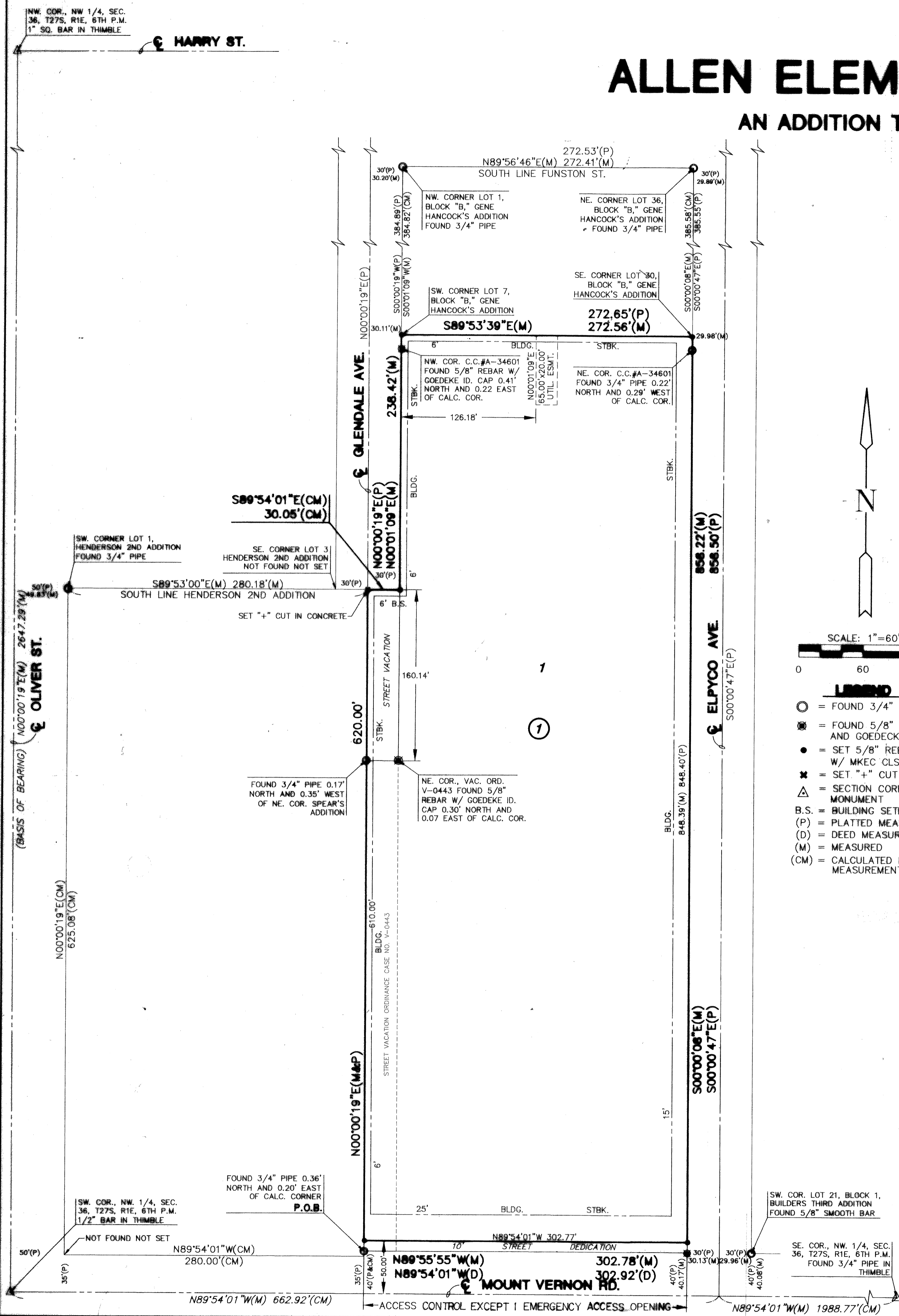


FINAL PLAT

ALLEN ELEMENTARY SCHOOL ADDITION

AN ADDITION TO WICHITA, SEDGWICK COUNTY, KANSAS



- = FOUND 3/4" PIPE
- ⊗ = FOUND 5/8" BAR AND GOEDECKE CAP
- = SET 5/8" REBAR W/ MKEC CLS 39 CAP
- ✱ = SET "+" CUT IN CONCRETE
- △ = SECTION CORNER MONUMENT
- B.S. = BUILDING SETBACK
- (P) = PLATTED MEASUREMENT
- (D) = DEED MEASUREMENT
- (M) = MEASURED
- (CM) = CALCULATED FROM MEASUREMENT

I, Curtis W. Luttrell, a Registered Land Surveyor in Kansas, do hereby certify that I have been in responsible charge of surveying and platting of "ALLEN ELEMENTARY SCHOOL ADDITION", an addition to Wichita, Sedgwick County, Kansas, into a Lot and a Block, the same being accurately set forth in the accompanying plat and described herein:

An unplatted tract of land lying in the Northwest Quarter, Section 36, Township 27 South, Range 1 East, of the 6th Principal Meridian, Wichita, Sedgwick County, Kansas; said unplatted tract lying South of Block "B," Gene Hancock's Addition, an addition to Wichita, Sedgwick County, Kansas;
AND ALSO:
A replat of Lots 8-29 inclusive, said Block "B," said Gene Hancock's Addition;
AND ALSO:
A portion of vacated Glendale Avenue by Ordinance Case #V-0443,
AND ALSO:
A portion of Glendale Avenue as platted in said Gene Hancock's Addition; said tracts more particularly described as follows:

Beginning at a point lying 40.00 feet North and 330.00 feet East of the Southwest corner of said Northwest Quarter, said point lying on the North right-of-way line of Mount Vernon Road; thence along the centerline of vacated Glendale Avenue and parallel with the West line of said Northwest Quarter N00°00'19"E, 620.00 feet to a point 30.00' feet East of the Southeast corner of Henderson 2nd Addition, an addition to Wichita, Kansas; thence S89°54'01"E, 30.05 feet to the East right-of-way line of Glendale Avenue; thence along said East line N00°01'09"E, 238.42 feet to the Southwest corner of Lot 7, Block "B," Gene Hancock's Addition; thence along the South lines of said Lots 7 and 30, of said Block "B," S89°53'39"E, 272.56 feet to a point lying on the West right-of-way line of Elpyco Avenue as platted in Gene Hancock's Addition, said point also being the Southeast corner of said Lot 30; thence along said West line S00°00'08"E, 858.22 feet to a point on said North right-of-way line; thence along said North right-of-way line N89°55'55"W, 302.78 feet to the point of beginning.

All lots, blocks, streets, utility easements, drainage easements, access control, within the above described property are hereby vacated and replatted by virtue of K.S.A. 12-512(b).

I hereby certify that the details of this plat are correct to the best of my knowledge and belief this 11 day of December, 2001.

Curtis W. Luttrell LS #1238
MKEC Engineering Consultants, Inc.
411 North Webb Road
Wichita, Kansas 67206

Know all men by these presents that we the undersigned property owners of the land above set forth in the Registered Land Surveyor's Certificate, have caused the same to be surveyed and platted into a Lot and a Block, the same to be known as "ALLEN ELEMENTARY SCHOOL ADDITION", an addition to Wichita, Sedgwick County, Kansas. Streets are hereby dedicated to and for the use of the public. Easements for the construction and maintenance of public utilities, and drainage, as indicated on the accompanying plat are hereby granted. A drainage plan has been developed for this plat and all drainage easements, right-of-way, or reserves shall remain at established grades or as modified with the approval of the applicable City or County Engineer, and unobstructed to allow for the conveyance of storm water. All egresses right of access to or from Mount Vernon Road over and across the South line of "ALLEN ELEMENTARY SCHOOL ADDITION", are hereby granted to the the appropriate governing body, as indicated on the face of the plat.

Unified School District No. 259

Connie Dietz

Connie Dietz, Board of Education,
Unified School District No. 259

STATE OF KANSAS)
ss.
SEDGWICK COUNTY)

BE IT REMEMBERED, that on this 11 day of February, 2002, before me the undersigned, a Notary Public in and for the County and State aforesaid, came *Connie Dietz, President, Board of Education, Unified School District No. 259*, to me personally known to be the same person who executed the foregoing instrument of writing and duly acknowledged the execution of the same.

IN WITNESS WHEREOF, I have hereunto set my hand and affixed my official seal, the day and year last above written.

R. Arlene Moore, Notary Public

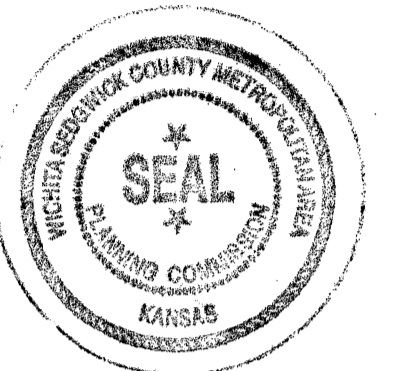
Notary Public
My appointment expires:



This plat of "ALLEN ELEMENTARY SCHOOL ADDITION", has been submitted to and approved by the Wichita-Sedgwick County Metropolitan Area Planning Commission, Wichita, Kansas.
Dated this 12th day of November, 2002.

WICHITA-SEDGWICK COUNTY METROPOLITAN PLANNING COMMISSION

J. Michaelis Chair
J. Michaelis, Chair
Marvin S. Krout Secretary
Marvin S. Krout, Secretary



This plat approved and all dedications shown thereon, if any, accepted by the City Council of the City of Wichita, Kansas, this 19 day of March, 2002.

At the direction of the City Council.

Chris Sanchez City Manager
Chris Sanchez, City Manager
Pat Burnett City Clerk
Pat Burnett, City Clerk



Entered on transfer record this 3rd day of April, 2002.

Don Brace County Clerk
Don Brace, County Clerk



STATE OF KANSAS)
ss:
SEDGWICK COUNTY)

This is to certify that this instrument was filed for record in the Register of Deeds office this 3 day of April, 2002 at 12:00 o'clock PM, and duly recorded.

Bill Meek Register of Deeds
Bill Meek, Register of Deeds

Linda Kizzire Deputy
Linda Kizzire, Deputy



Reviewed in accordance with K.S.A. 58-2005 on this 12th day of December, 2001.

Tricia L. Robello Deputy County Surveyor
Tricia L. Robello, LS #1246
Deputy County Surveyor
Sedgwick County, Kansas

#2073128