

Benchmark

Benchmark - "□" chiseled on top of curb. Approximately 84.8' South & 121.3' East of the Southeast Corner of Lot 21, Block 13, Westlink Village Fifth Addition. Elevation = 1338.18 (NAVD 88)

Existing 16" Cast Iron Water Main. Location & Depth Per City Plans.

CAUTION! VERIFY! Existing Gas Line. Depth Unknown.

CAUTION! Overhead Line Crossing.

W.L. Sta. 0+73.72, End Line 1 = B.L. Sta. 4+90.81, 66.61' Lt. 1-Fire Hydrant Assembly (L=4') CLOW FH Valve Box Elevation = 1342.60 Hydrant Bury Elevation = 1342.60 1-8" CIMJ Plug.

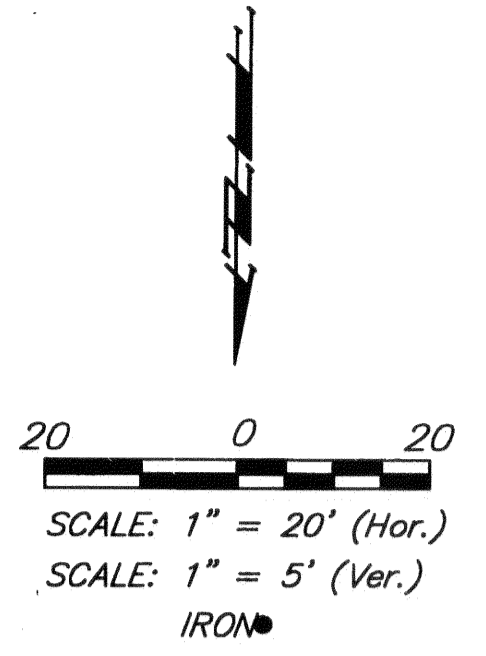
Remove & Replace Concrete Sidewalk As Necessary For Waterline Construction. Utilize Joints When Possible. See Notes #5 & #7.

W.L. Sta. 0+00.00, Begin Line 1 = B.L. Sta. 4+17.09, 66.92' Lt. Tap Existing 16" Cast Iron Water Main. 1-16"x8" Tapping Sleeve. 1-8" Tapping Valve w/Valve Box To Be Furnished & Installed By The City Of Wichita. (Contractor To Reimburse City For Tapping Sleeve, Valve & Installation \$1830.00.) Valve Box Elevation = 1342.13 The Contractor Will Install & Set Valve Box To Grade. Extend 8" Water Line West.

Remove & Replace Existing Asphalt Pavement As Necessary For Water Line Construction. See Notes #5 & #6.

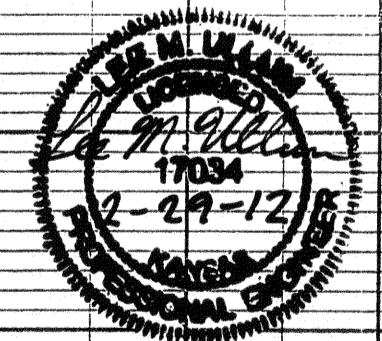
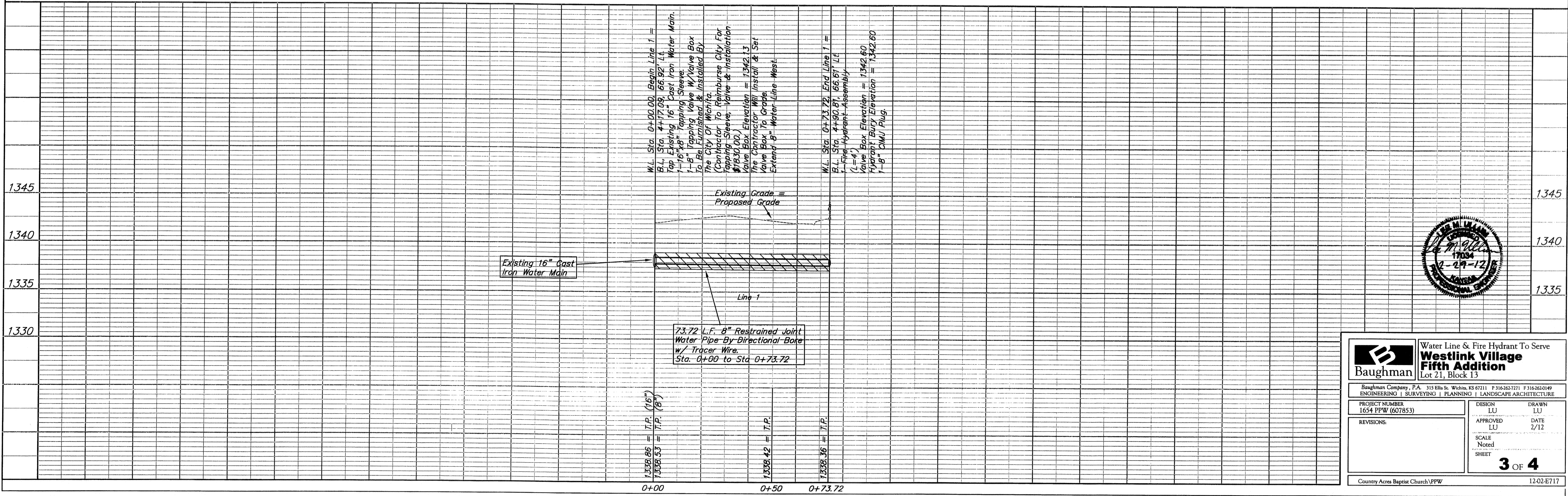
73.72 L.F. 8" Restrained Joint Water Pipe By Directional Bore w/ Tracer Wire. Sta. 0+00 to Sta 0+73.72

Northeast Corner Lot 21, Block 13, Westlink Fifth Addition = B.L. Sta. 5+00.



Contractor Shall Follow All Applicable Best Management Practices (BMP) For Erosion Control.

Contractor To Use Extreme Caution When Excavating Near Utility Lines. Contractor To Hand Dig To Expose All Utility Lines Prior To Construction. Verify Depth To Determine Conflict If Any.



		Water Line & Fire Hydrant To Serve Westlink Village Fifth Addition Lot 21, Block 13	
<small>Baughman Company, P.A. 315 Ellis St. Wichita, KS 67211 P 316-262-7271 F 316-262-0149 ENGINEERING SURVEYING PLANNING LANDSCAPE ARCHITECTURE</small>			
PROJECT NUMBER 1654 PFW (607853)	DESIGN LU	DRAWN LU	DATE 2/12
REVISIONS:	APPROVED LU	NOTED LU	SCALE Noted
		3 OF 4	
Country Acres Baptist Church/VFW		1202-E717	