

# CONSTRUCTION PLANS FOR PRIVATE FIRE SERVICE

CITY OF WICHITA PROJECT NO. 1655PPW

OCA # 607853

TO SERVE

## KANSAS GASTROENTEROLOGY THE CITY OF WICHITA, KANSAS SEDGWICK COUNTY, KANSAS

### General Notes

- Contractor will be required to provide notice to utility companies a minimum of seventy-two (72) hours prior to any excavation, as follows:

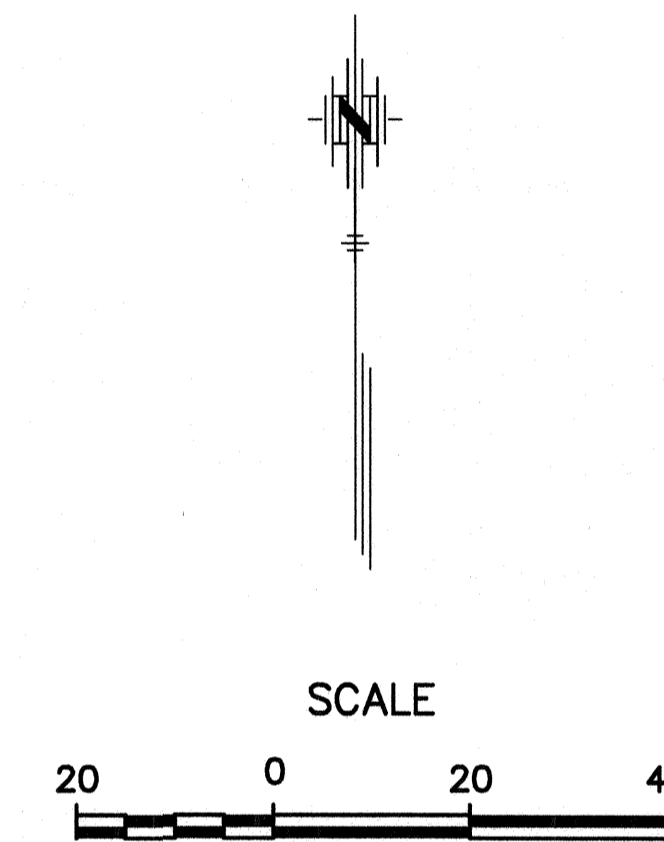
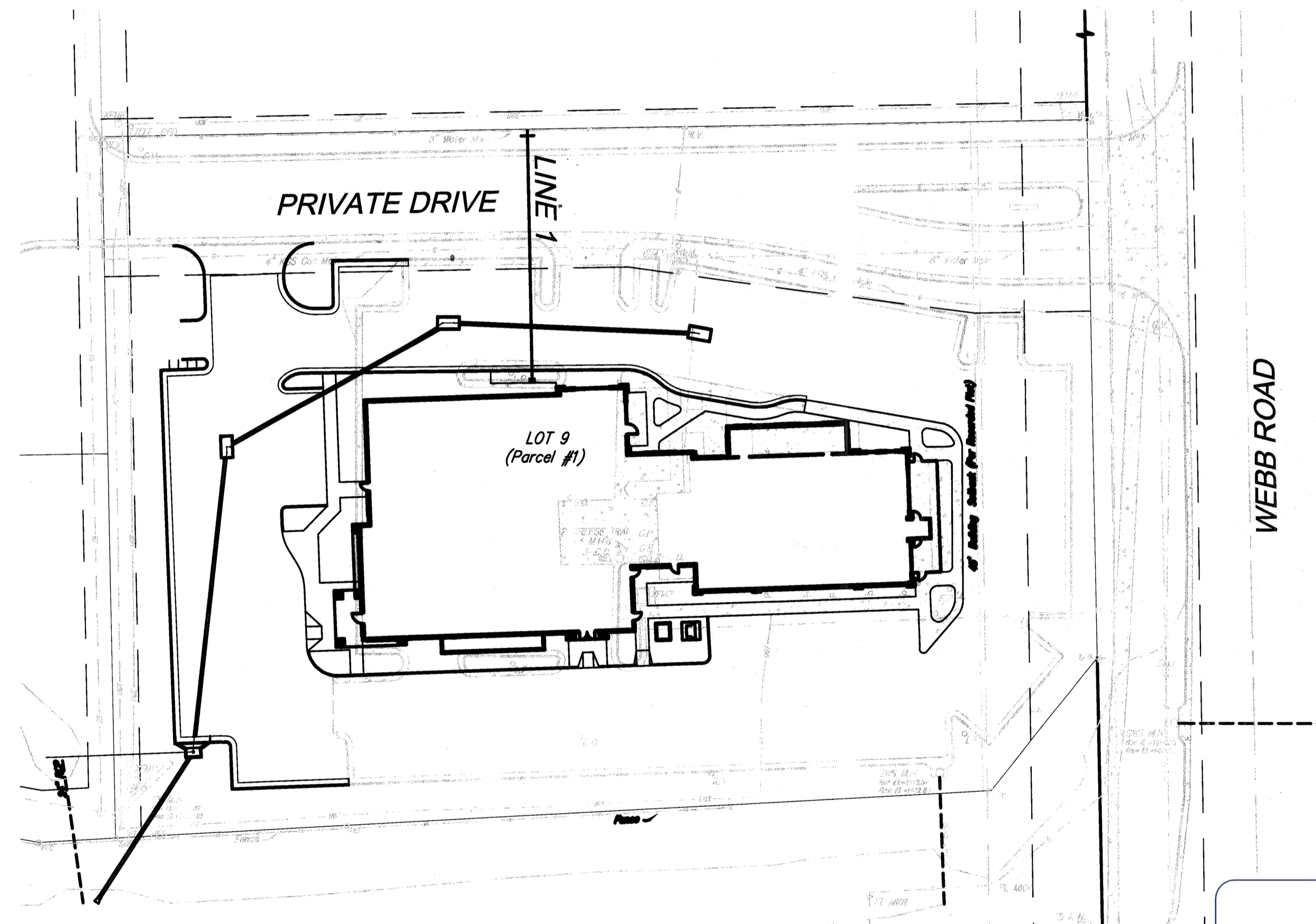
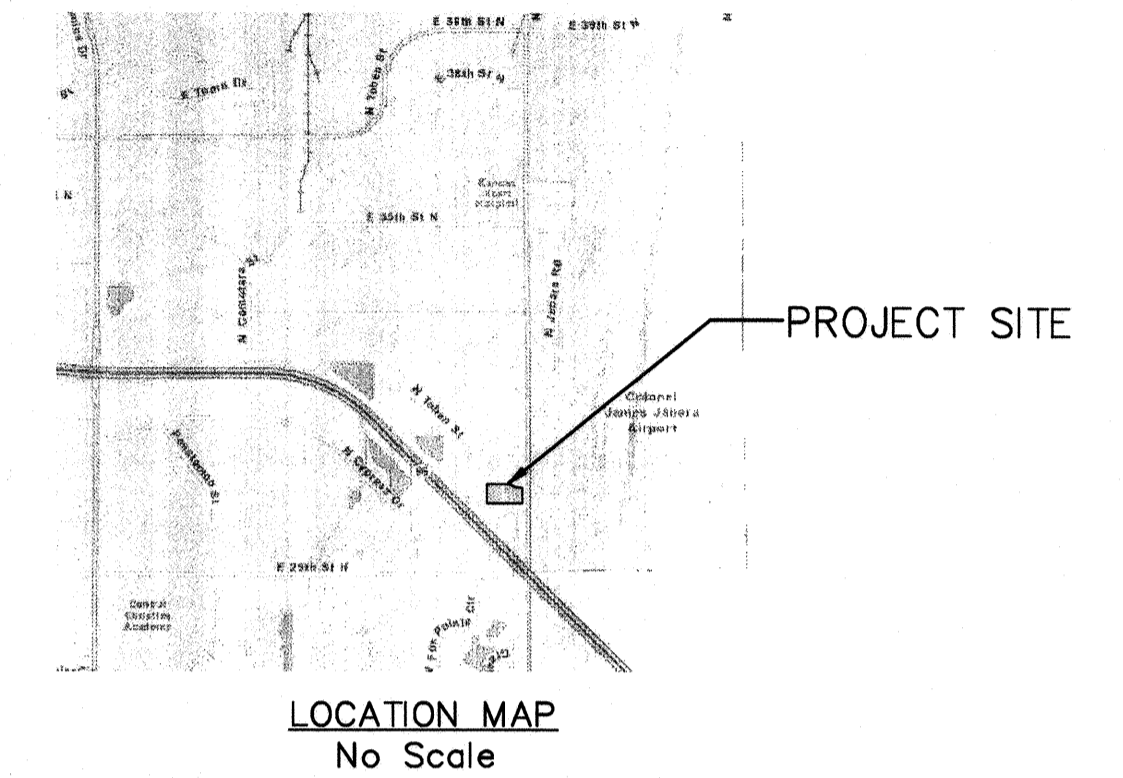
Kansas One-Call 687-2470

The Contractor must notify the following in case of an emergency:

Cox Communications (Cable)	262-0661
Westar Energy (Electric)	261-6512
Kansas Gas Service (Gas)	832-3101
AT&T (Telephone)	1-800-870-8390
City of Wichita Water & Sewer	262-6000
Black Hills Energy	1-800-303-0357

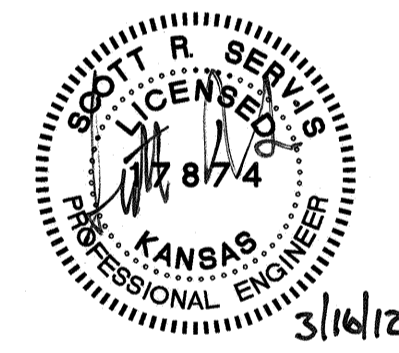
- All water mains and appurtenances shall be installed in accordance with City of Wichita, Kansas Standard Specifications for Water Main Installations No. 14533.
- The water main shall be constructed on the alignment shown by the plans. Trees and shrubs in public right-of-way which are in direct conflict with proposed new construction shall be removed by the Contractor with the Engineer's approval. Trees and shrubs which are not in direct conflict with proposed new construction shall be saved and protected from damage. The cost for any necessary tree trimming, clearing and/or grubbing shall be included in the price bid for the installed water main pipe.
- Opening and closing of water valves shall be done slowly to prevent damage to the water distribution system from water hammer. All valves closed by the contractor must be reopened as new construction permits. Project inspector must ascertain that any valve closed by the contractor is reopened. Contractor will be permitted to operate water valves only when the project inspector assigned to the project is present.
- Contractor shall not start work on the project until the project inspector is assigned to the project and is present on the site. Any work done without inspection will be required to be uncovered for inspection.
- Underground utility service lines and overhead utility pole lines are to be adjusted as necessary by others prior to construction, unless the plans specifically call for their adjustment by the Contractor. Existing utilities and their locations, as shown on the plans, represent the best information obtainable for design. Location information has been obtained from the various utility companies and is either from company record drawings or company-provided field locations. The Contractor will be required to work around existing utilities within the right-of-way which do not conflict with proposed construction.
- The Contractor shall give all property owners and/or tenants of developed property directly abutting the construction of this project a minimum of ten (10) days notice prior to start of construction.
- The Contractor shall be responsible for preserving property irons. The Contractor will be required to re-establish any property irons which are damaged or destroyed by his construction operations. Such irons shall be re-established by a licensed land surveyor in accordance with state law.

- All areas disturbed by construction operations shall be seeded with rye grass at a rate of 300 lbs/acre immediately following construction in that area. Ground shall be prepared per City of Wichita specifications prior to seeding.
- The Contractor shall be responsible for all testing, inspection, staking, and other work as necessary to complete the project.



### SHEET INDEX

TITLE SHEET	SHEET NO. 1
WATER PLAN AND PROFILE	SHEET NO. 2
BMP DETAILS	SHEET NO. 3-8
FINAL PLAT	SHEET NO. 9



APPROVED AS NOTED  
BY CITY ENGINEER OF WICHITA,  
BY WICHITA WATER & SEWER DEPARTMENT,  
& BY WICHITA FIRE DEPARTMENT

Public Works *Julianne Kellman* 3-16-12  
Water & Sewer *Greg Yallou* 3-16-12  
Fire *SK Smith* 3-16-12

**NOTE TO CONTRACTORS**

**Public Property:**  
Inspection and testing for the waterline is to be provided by a Licensed Consulting Engineering Firm under contract with the Owner/Developer. Said inspection to be in accordance with the City of Wichita standard construction engineering practices and certified by a Professional Engineer Licensed in the state of Kansas. No work shall be performed in dedicated easements or public right-of-way by the Contractor without such inspection nor shall any work be commenced without written authorization by the City Engineer. All Construction and Materials shall comply with the City or Wichita Specifications and Standards (on file and available in the City Engineer's Office).

**Private Property:**  
Installation and testing for the fire protection line is to be performed by a City of Wichita licensed fire protection contractor in accordance with the fire codes as adopted by the City of Wichita. All material and construction practices for the fire protection line shall comply with the fire codes as adopted by the City of Wichita (available from the City of Wichita Fire Department). The Contractor shall not commence work without notification and approval of the Wichita Fire Department. Inspection of the fire protection line is to be provided by a Licensed Engineering Firm under contract with the Owner/Developer and the Fire Department. The contractor shall not start work until the project inspector is assigned to the project and present on the site. Any work done without inspection will be required to be uncovered for inspection.

### AS BUILTS

Contractor: McDaniel Company, Inc. 4/13/2012	Project Inspector: Larry Gann  <b>kemiller</b> engineering 516 S. Market Wichita, KS 67202 (316)284-0242
---	---

MARCH 2012  
PLANS PREPARED BY



POE & ASSOCIATES, INC.  
5940 E. Central, Suite 200 ■ Wichita, KS 67208-4242  
Phone 316/685-4114 ■ FAX 316/685-4444