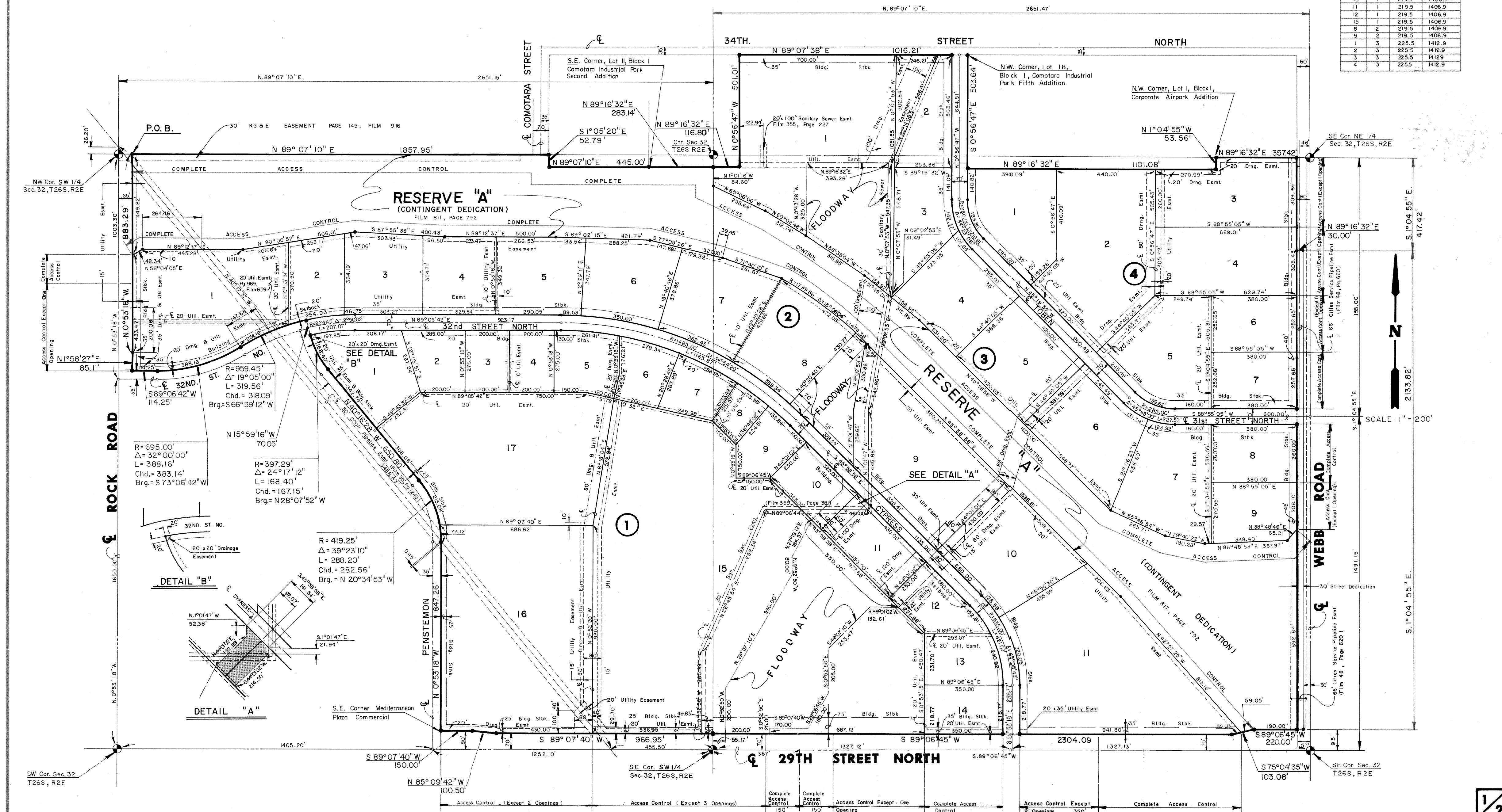


# FINAL PLAT OF MEDITERRANEAN PLAZA

AN ADDITION TO WICHITA, SEDGWICK COUNTY, KANSAS

| Lot No. | Block No. | Minimum Plat City Datum | Minimum Plat (U.S.G.S.) |
|---------|-----------|-------------------------|-------------------------|
| 10      | 1         | 219.5                   | 1406.9                  |
| 11      | 1         | 219.5                   | 1406.9                  |
| 12      | 1         | 219.5                   | 1406.9                  |
| 15      | 1         | 219.5                   | 1406.9                  |
| 8       | 2         | 219.5                   | 1406.9                  |
| 9       | 2         | 219.5                   | 1406.9                  |
| 1       | 3         | 225.5                   | 1412.9                  |
| 2       | 3         | 225.5                   | 1412.9                  |
| 3       | 3         | 225.5                   | 1412.9                  |
| 4       | 3         | 225.5                   | 1412.9                  |



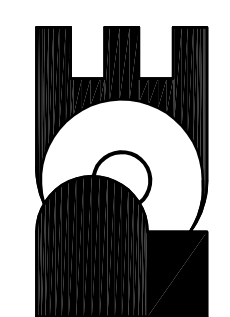
This digital plat record accurately reproduces in all details the original plat filed with the Sedgwick County Register of Deeds. Digitized under the supervision of Register of Deeds Bill Meek by Sedgwick County Geographic Information Systems.

Bill Meek, Register of Deeds  
Digitized rendition of original signature

| No. | Date | By | Approved | Revision |
|-----|------|----|----------|----------|
|     |      |    |          |          |
|     |      |    |          |          |
|     |      |    |          |          |
|     |      |    |          |          |

KANSAS GASTROENTEROLOGY  
FINAL PLAT  
CITY OF WICHITA, KANSAS  
JAMES L. ARMOUR, P.E. - CITY ENGINEER  
XXXX PPD (XXXXXX)

POE & ASSOCIATES, INC.  
CONSULTING ENGINEERS  
5940 E. Central, Suite 200 - Wichita, KS  
67208-4242  
Phone: 316/685-4114 - FAX: 316/685-4444



FINAL  
Engineer: S. SERVIS  
Designer: S. SERVIS  
Drawing: P:\1109\Kansas Gastro\dwg\waterplans.dwg  
Date: 3/15/2012  
Sheet 9 of 9