

Benchmarks

Benchmark #1 - "V" Notch in sidewalk adjacent to Whittier (Abandoned) West of Whittier and South of Kellogg Drive. Elev. = 1345.54

Benchmark #2 - "□" On top of East curb on Whittier and south property line. Elev. = 1345.39

Existing Manhole
Sta. 0+00.0, Begin Line 1. Remove 7.5 L.F. 15" RCP. Insert 24" RCP. Extend 24" RCP South. Reform Invert As Necessary.

Remove & Replace Existing Pavement, Curb, & Gutter As Necessary For Storm Sewer Construction. See Notes #6 & #7.

Sta. 0+07.5, Line 1. Remove Existing Single Type "2" Inlet. Construct Double Type "2" Inlet. Top Of Curb = 1341.65. Install Sediment Barrier.

CAUTION! 12" Water Main Crossing. Depth Field Verified.

Remove & Replace Sidewalk As Necessary For Storm Sewer Construction. See Notes #6 & #7.

Contractor Shall Follow All Applicable Best Management Practices (BMP) For Erosion Control.

Contractor To Use Extreme Caution When Excavating Near Utility Lines. Contractor To Hand Dig To Expose All Utility Lines Prior To Construction. Verify Depth To Determine Conflict If Any.

CAUTION! Guy Wire.

CAUTION! Existing Light Pole. To Be Relocated By Others.

Sta. 0+45.6, Line 1 = Sta. 0+00.0, Line 2. Construct Double Type "1" Inlet. (3'x10') Top = 1342.30. Install Sediment Barrier.

CAUTION! Unknown 1" Pipe. Depth Field Verified.

CAUTION! VERIFY! Unable To Field Verify Location & Depth Of Westar Conduit. Depth Per Westar. Contractor To Expose Conduit Prior To Construction.

CAUTION! Existing Light Pole. To Be Relocated By Others.

CAUTION! VERIFY! 12" Kansas Gas Service, & AT&T Crossings. Depths Field Verified.

Remove & Replace Existing Pavement As Necessary For Storm Sewer Construction.

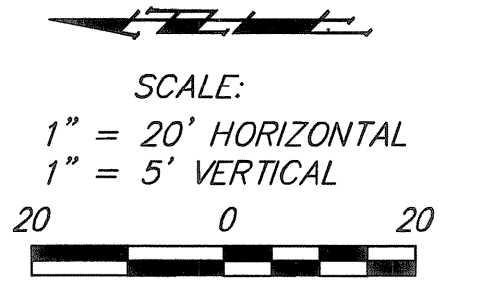
CAUTION! Existing Light Pole.

Sta. 2+75.2, Line 1. Construct 4'x4' Drop Inlet Over Existing 18" RCP. Top = 1347.53. Abandon 46 L.F. 18" RCP North Of Proposed Inlet. Install Sediment Barrier.

CAUTION! VERIFY! Existing 8" Sanitary Sewer To Be Abandoned.

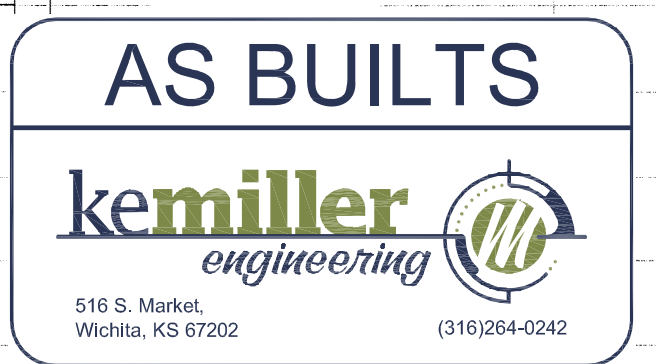
Existing 18" RCP To Remain Temporarily.

Calhoun



NOTE: Contractor Shall At All Times Coordinate With General Contractor Prior To Removing & Replacing Pavement For Utility Construction & Removal.

NOTE: Contractor Shall Sand Backfill, Flush, & Vibrate Storm Water Sewer Trenches When Pipe Is Under Pavement.



Sanitary Sewer (To Be Abandoned)

20' Utility Easement (To Be Vacated)

Sta. 4+90.6, Line 1. Install Contech CDS Unit Top = 1347.44. 24" RCP Flow = 1340.37

Sanitary Sewer To Be Abandoned/Removed.

Sta. 5+10.6, Line 1. Construct 4'x4' Drop Inlet Top = 1346.13. Install Sediment Barrier. Match Point.

Existing Pavement

Existing Pavement

Existing Pavement

Existing Pavement

Existing Pavement

Existing Pavement

Existing Pavement

Existing Pavement

Existing Pavement

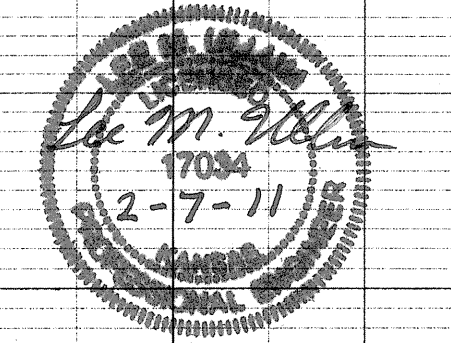
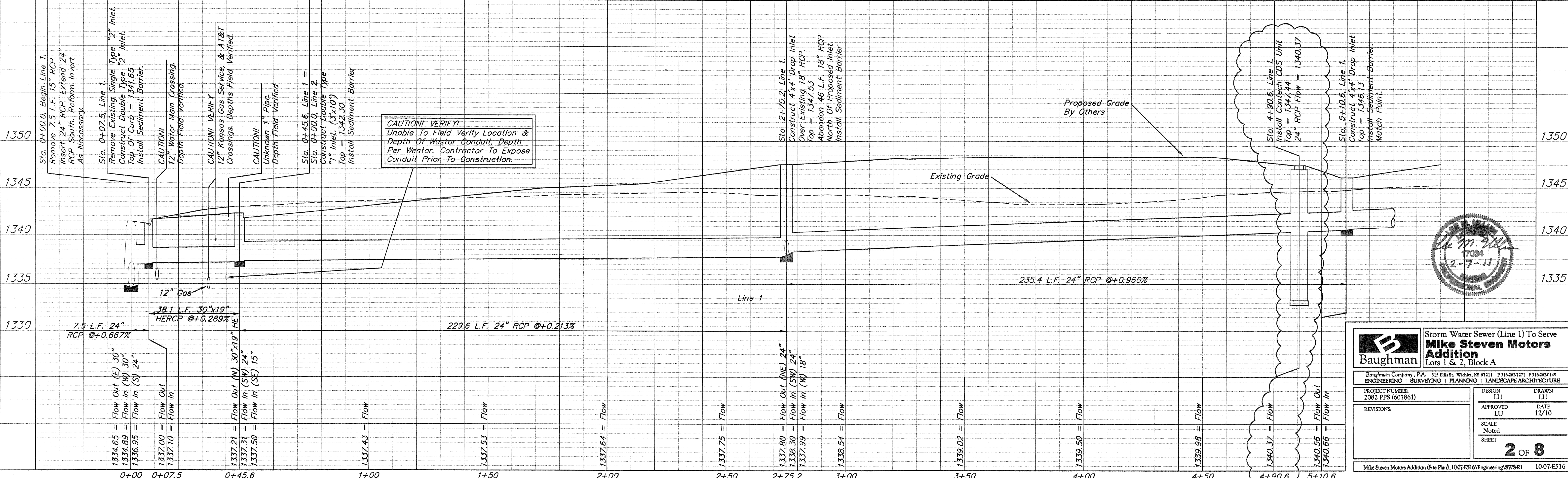
Existing Pavement

Existing Pavement

Existing Pavement

Existing Pavement

Existing Pavement



Baughman Storm Water Sewer (Line 1) To Serve Mike Steven Motors Addition Lots 1 & 2, Block A

Baughman Company, P.A. 315 Ella St. Wichita, KS 67211 P 316-263-2721 F 316-263-2149
ENGINEERING | SURVEYING | PLANNING | LANDSCAPE ARCHITECTURE

PROJECT NUMBER: 2082 PPS (607861)	DESIGN: LU	DRAWN: LU
REVISIONS:	APPROVED: LU	DATE: 12/10
	SCALE: Noted	SHEET: 2 OF 8

Mike Steven Motors Addition (Site Plan), 1007-E516(Engineering)SWSR1 10-07-E516