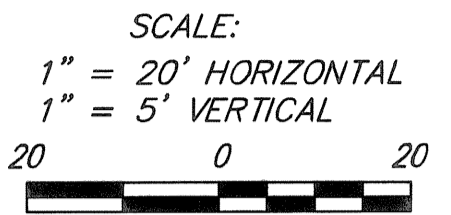


Benchmarks

Benchmark #1 - "V" Notch in sidewalk adjacent to Whittier (Abandoned) West of Whittier and South of Kellogg Drive. Elev. = 1345.54

Benchmark #2 - "□" On top of East curb on Whittier and south property line. Elev. = 1343.38

AS BUILTS
kemiller engineering
 516 S. Market, Wichita, KS 67202 (316)264-0242



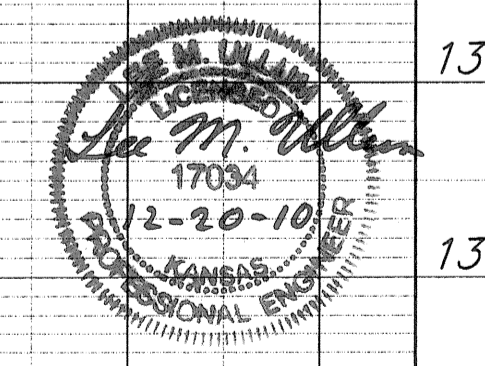
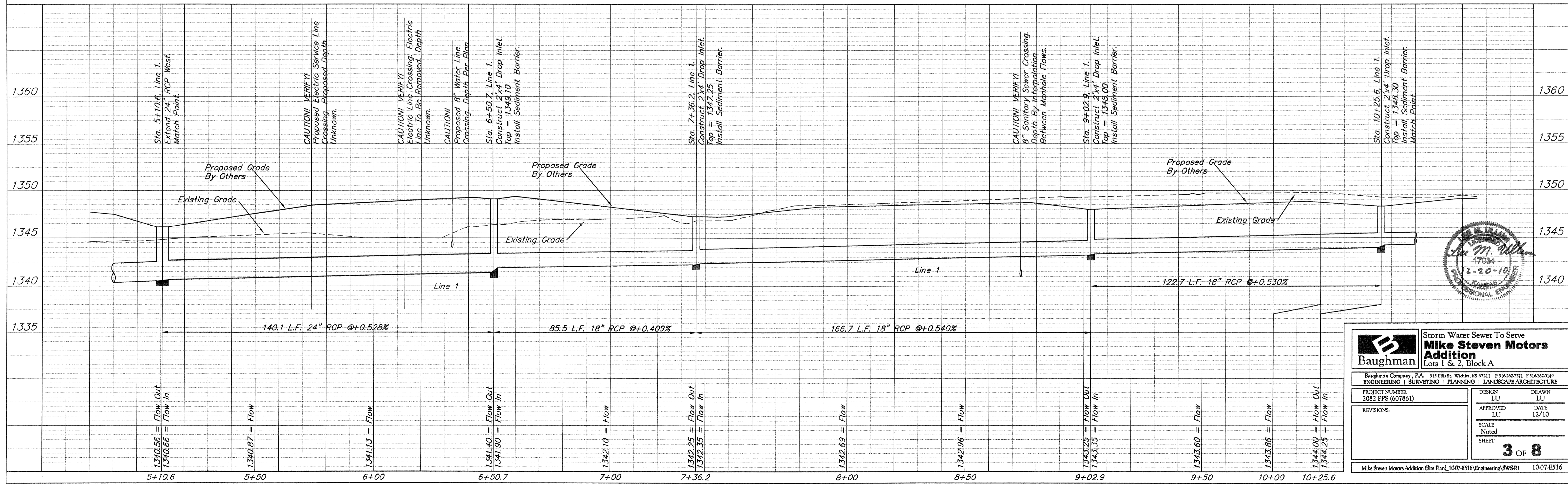
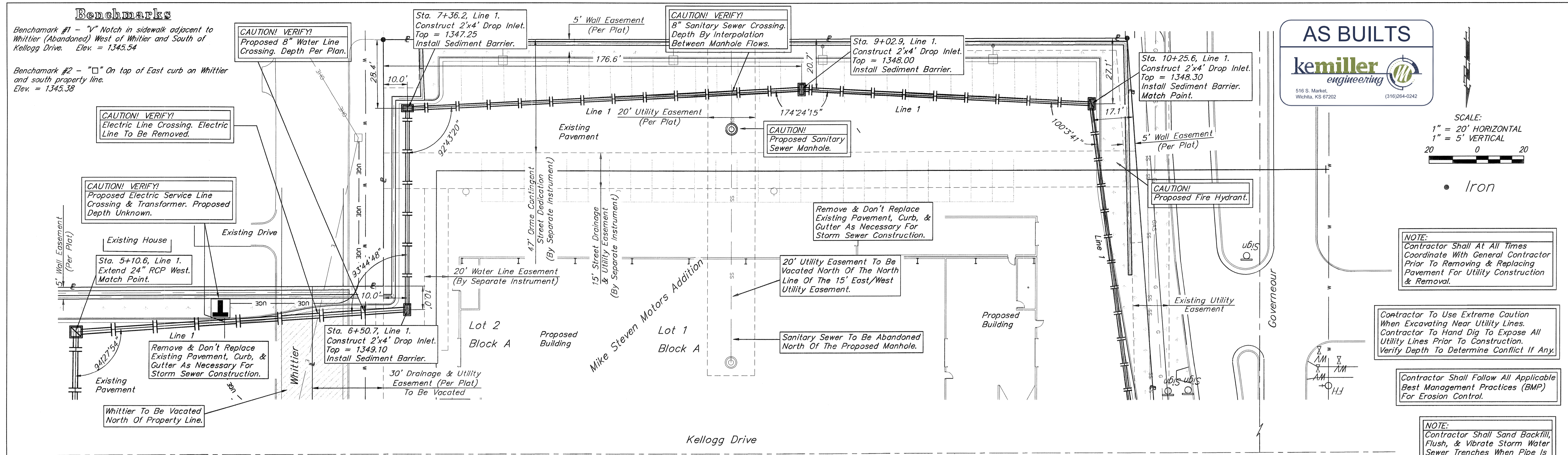
• Iron

NOTE:
 Contractor Shall At All Times Coordinate With General Contractor Prior To Removing & Replacing Pavement For Utility Construction & Removal.

Contractor To Use Extreme Caution When Excavating Near Utility Lines. Contractor To Hand Dig To Expose All Utility Lines Prior To Construction. Verify Depth To Determine Conflict If Any.

Contractor Shall Follow All Applicable Best Management Practices (BMP) For Erosion Control.

NOTE:
 Contractor Shall Sand Backfill, Flush, & Vibrate Storm Water Sewer Trenches When Pipe Is Under Pavement.



Baughman Storm Water Sewer To Serve **Mike Steven Motors Addition**
 Lots 1 & 2, Block A

115 Ellis St. Wichita, KS 67211 P 3162637271 F 3162621416
 ENGINEERING | SURVEYING | PLANNING | LANDSCAPE ARCHITECTURE

PROJECT NUMBER 2082 PPS (607861)	DESIGN LU	DRAWN LU
REVISIONS	APPROVED LU	DATE 12/10
	SCALE Noted	SHEET 3 OF 8

Mike Steven Motors Addition (Site Plan), 1007-E516(Engineering)SWSR1 10-07-E516