

Benchmarks

Benchmark #1 - "V" Notch in sidewalk adjacent to Whittier (Abandoned) West of Whittier and South of Kellogg Drive. Elev. = 1345.54

Benchmark #2 - "□" On top of East curb on Whittier and south property line. Elev. = 1345.38

Sta. 0+00.0, Begin Line 3. Core Existing Inlet. Install 15" RCP. Extend 15" RCP South. Reform Invert As Necessary For Flow. Install Sediment Barrier.

CAUTION! 12" Water Main Crossing. Depth Field Verified.

Remove & Replace Existing Sidewalk As Necessary For Storm Water Sewer Construction. See Notes #6 & #7.

CAUTION! Unknown 4" Steel Pipe Crossing. Depth Field Verified.

CAUTION! VERIFY 12" Kansas Gas Service & AT&T Crossings. Depths Field Verified.

Sta. 2+02.8, Line 3. Construct 2'x4' Drop Inlet. Top = 1347.50. Install Sediment Barrier.

Sta. 2+91.0, End Line 3. Construct 2'x4' Drop Inlet. Top = 1347.50. Install Sediment Barrier.

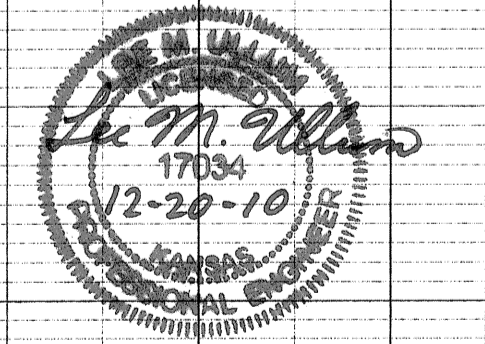
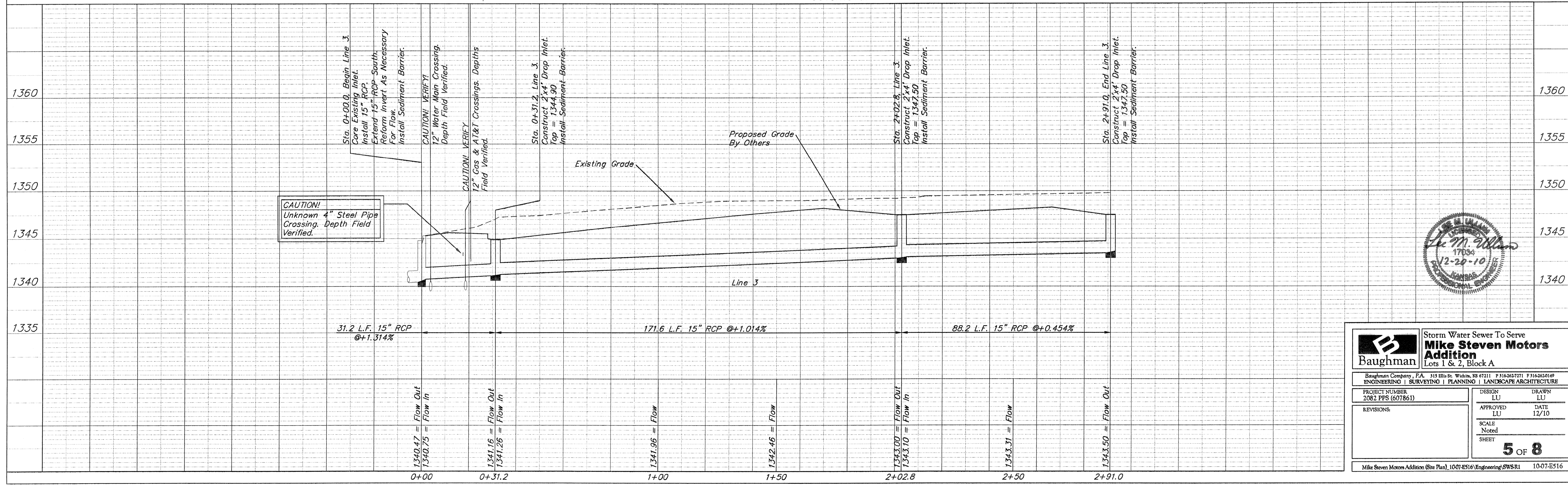
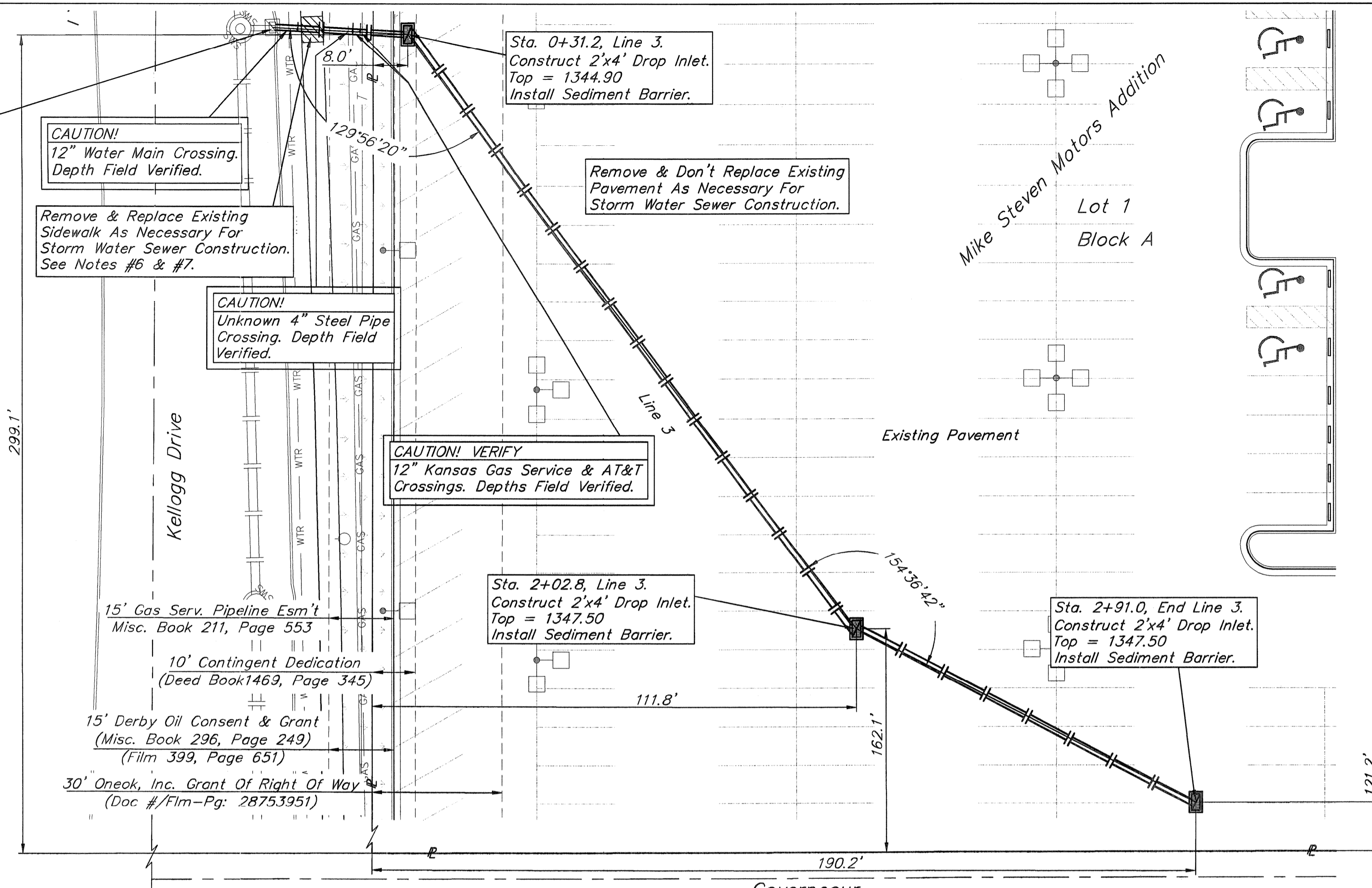
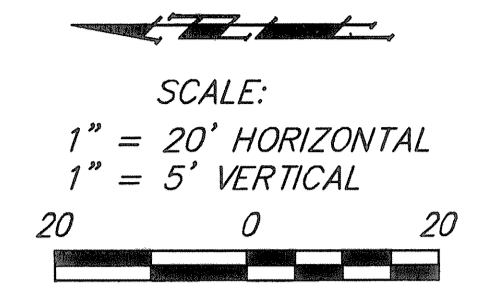
NOTE: Contractor Shall Sand Backfill, Flush, & Vibrate Storm Water Sewer Trenches When Pipe Is Under Pavement.

Contractor Shall Follow All Applicable Best Management Practices (BMP) For Erosion Control.

Contractor To Use Extreme Caution When Excavating Near Utility Lines. Contractor To Hand Dig To Expose All Utility Lines Prior To Construction. Verify Depth To Determine Conflict If Any.



NOTE: Contractor Shall At All Times Coordinate With General Contractor Prior To Removing & Replacing Pavement For Utility Construction & Removal.



Baughman Storm Water Sewer To Serve **Mike Steven Motors Addition**
Lots 1 & 2, Block A

Baughman Company, P.A. 315 Ellis St. Wichita, KS 67211 F 316-263-7271 F 316-263-0149
ENGINEERING | SURVEYING | PLANNING | LANDSCAPE ARCHITECTURE

PROJECT NUMBER 2082 PPS (607861)	DESIGN LU	DRAWN LU
REVISIONS:	APPROVED LU	DATE 12/10
	SCALE Noted	SHEET 5 OF 8

Mike Steven Motors Addition (Site Plan), 1007-E516 Engineering/SWSR1 10-07-E516