

**Benchmarks**

Benchmark #1 - "V" Notch in sidewalk adjacent to Whittier (Abandoned) West of Whittier and South of Kellogg Drive. Elev. = 1345.54

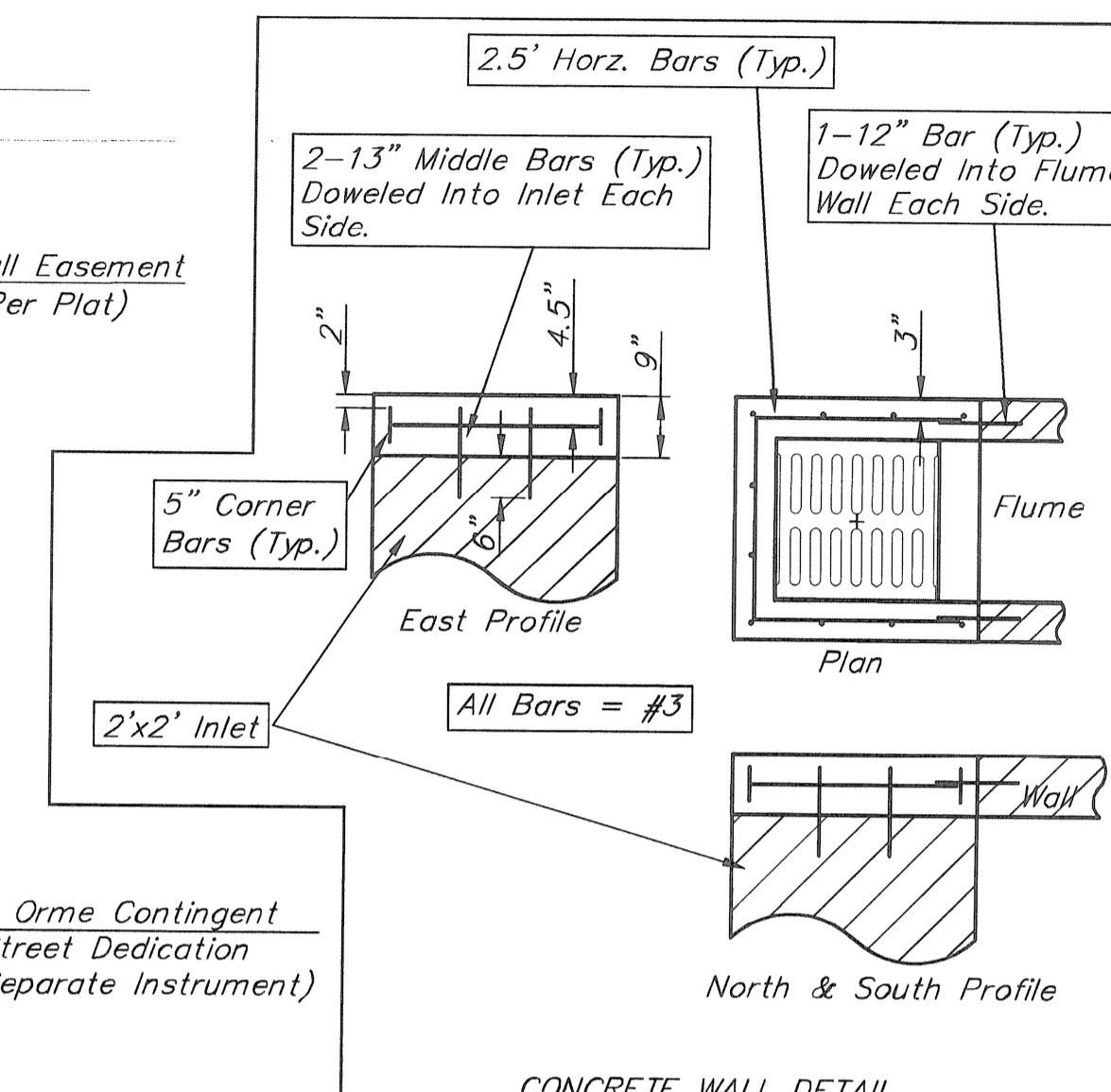
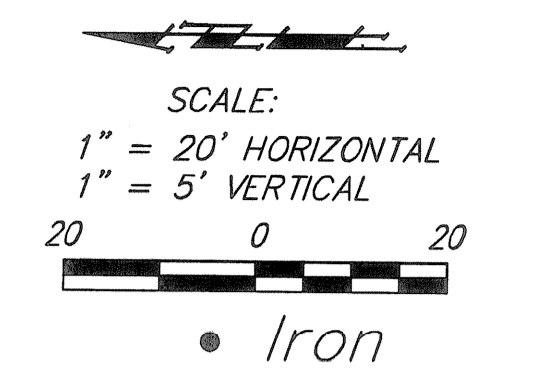
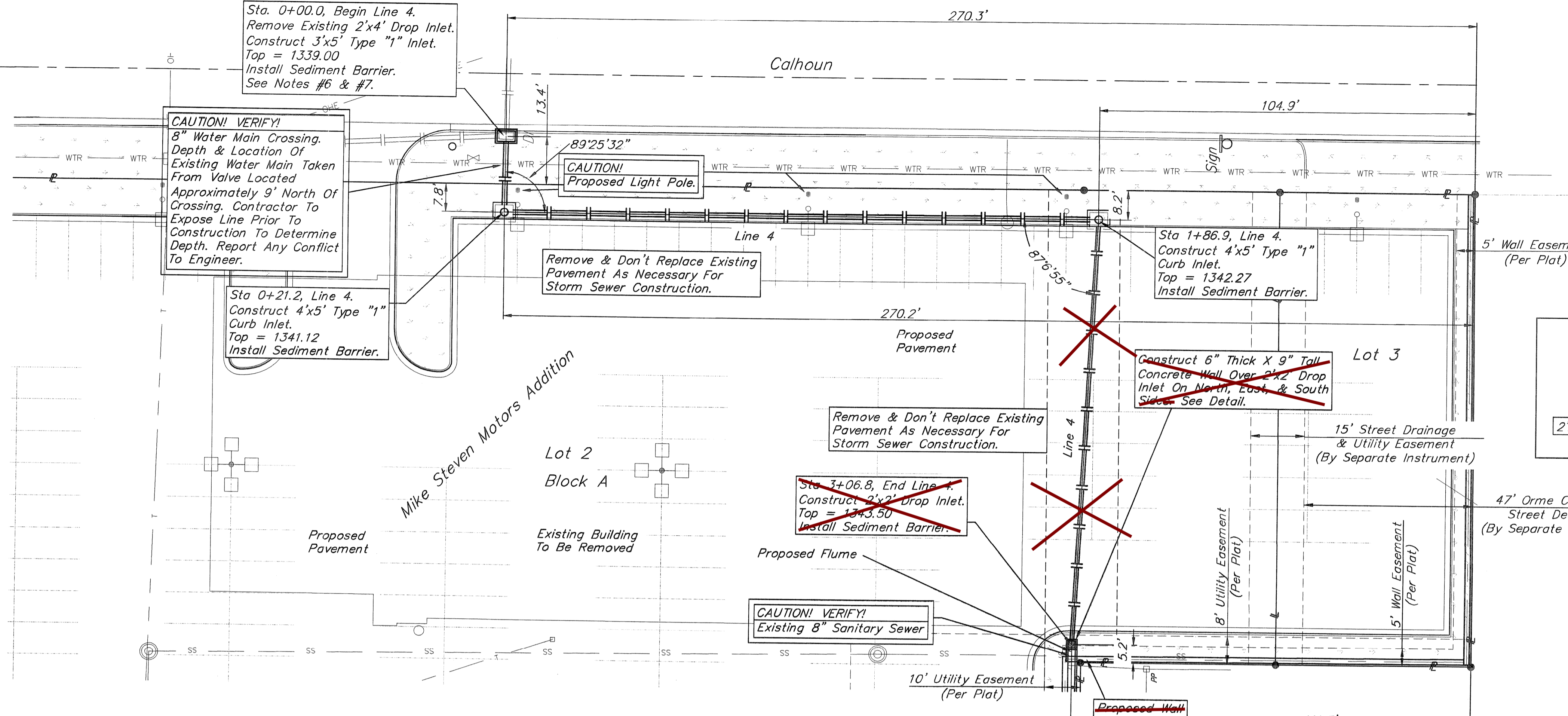
Benchmark #2 - "□" On top of East curb on Whittier and south property line. Elev. = 1345.38



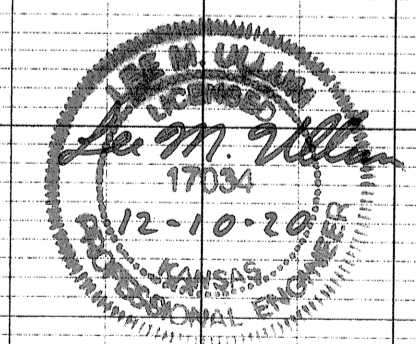
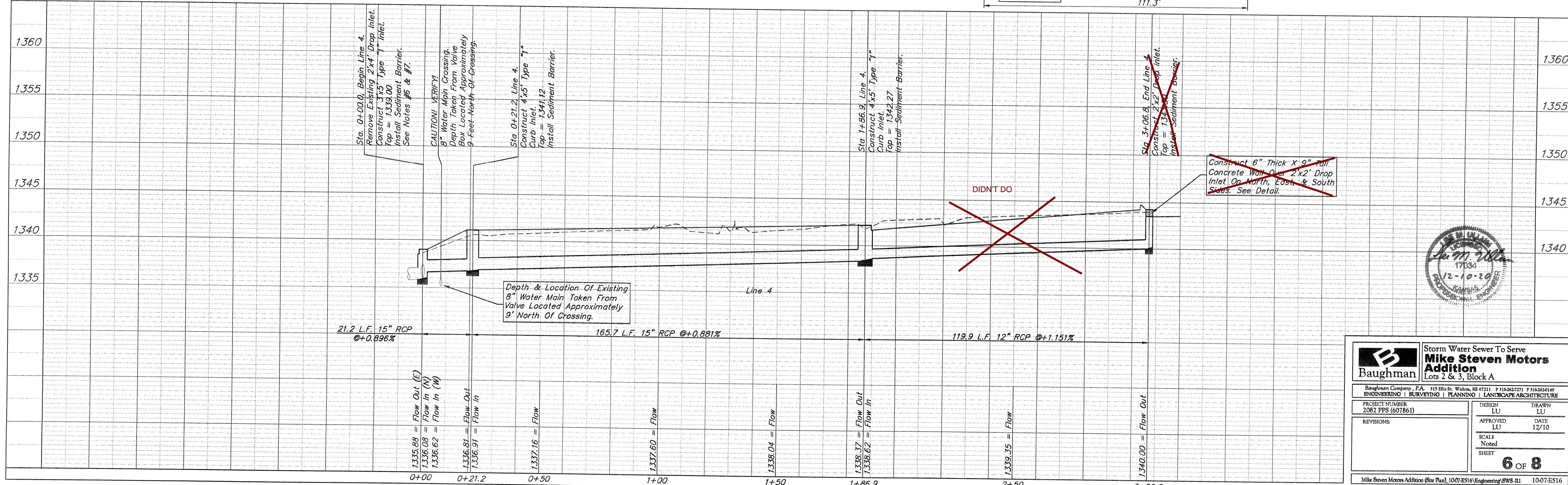
Contractor Shall Follow All Applicable Best Management Practices (BMP) For Erosion Control.

Contractor To Use Extreme Caution When Excavating Near Utility Lines. Contractor To Hand Dig To Expose All Utility Lines Prior To Construction. Verify Depth To Determine Conflict If Any.

NOTE: Contractor Shall Sand Backfill, Flush, & Vibrate Storm Water Sewer Trenches When Pipe Is Under Pavement.



NOTE: Contractor Shall At All Times Coordinate With General Contractor Prior To Removing & Replacing Pavement For Utility Construction & Removal.



**Baughman** Storm Water Sewer To Serve **Mike Steven Motors Addition** Lots 2 & 3, Block A

PROJECT NUMBER: 2082 PPS (607861) | DESIGN: LU | DRAWN: LU  
 APPROVED: LU | DATE: 12/10  
 SCALE: Noted | SHEET: 6 OF 8

Mike Steven Motors Addition (Site Plan), 1007-ES16/Engineering/SWS-R1 10-07-ES16