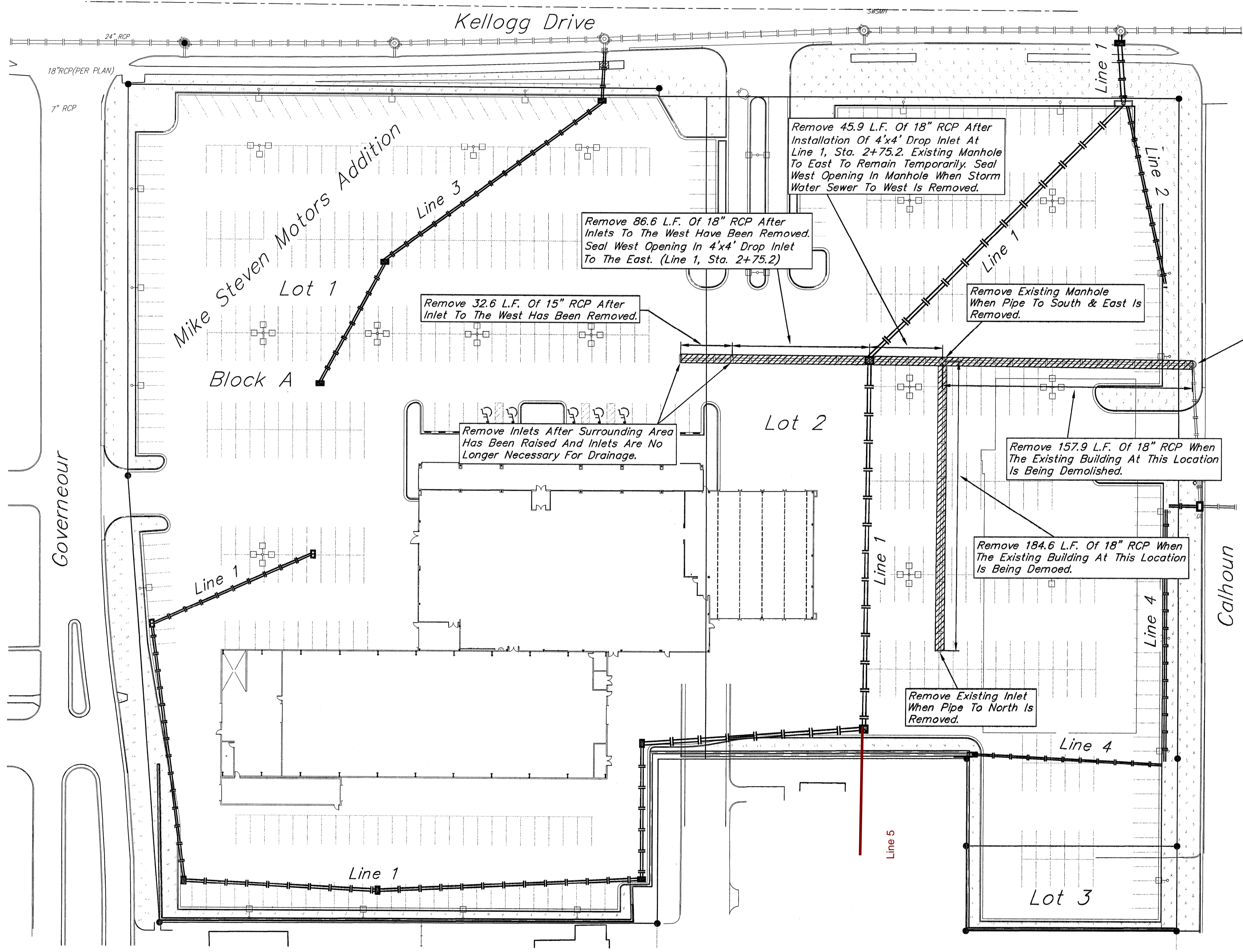
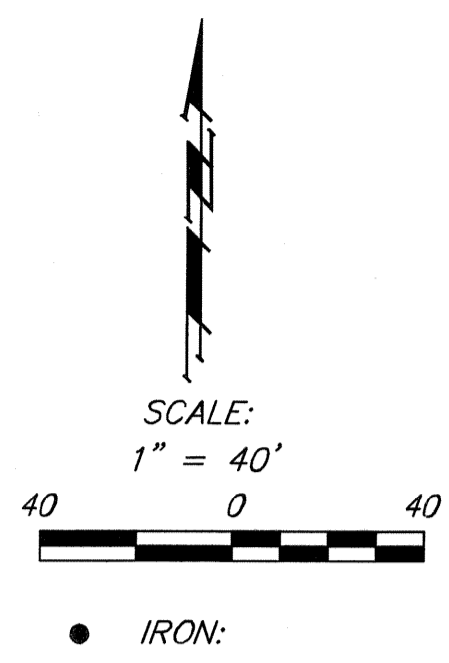


NOTE:
Contractor Shall At All Times Coordinate With General Contractor Prior To Removing & Replacing Pavement For Utility Construction & Removal. All Construction & Removal Shall Be Per City Of Wichita Specifications.



Manhole To Remain. Seal West Opening After Removal Of 18" RCP.

Benchmarks

Benchmark #1 - "V" Notch in sidewalk adjacent to Whittier (Abandoned) West of Whittier and South of Kellogg Drive. Elev. = 1,345.54

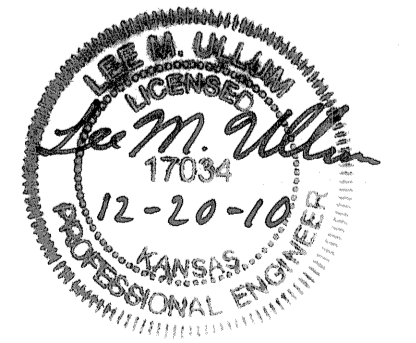
Benchmark #2 - "□" On top of East curb on Whittier and south property line. Elev. = 1,345.38

AS BUILTS

kemiller
engineering

516 S. Market,
Wichita, KS 67202

(316)264-0242



STORM WATER SEWER REMOVAL

Baughman

Baughman Company, P.A. 315 Ellis St. Wichita, KS 67211 P 316-262-7271 F 316-262-0149
ENGINEERING | SURVEYING | PLANNING | LANDSCAPE ARCHITECTURE