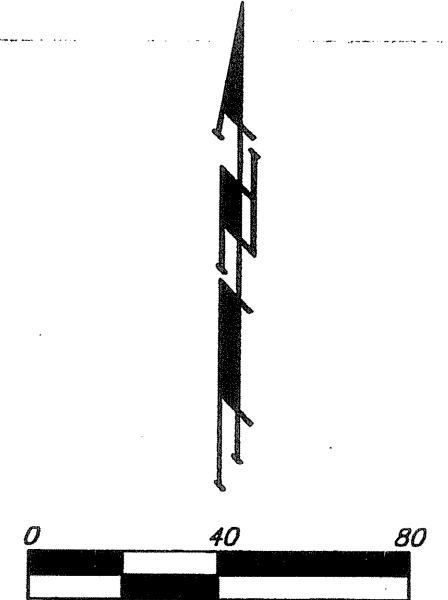
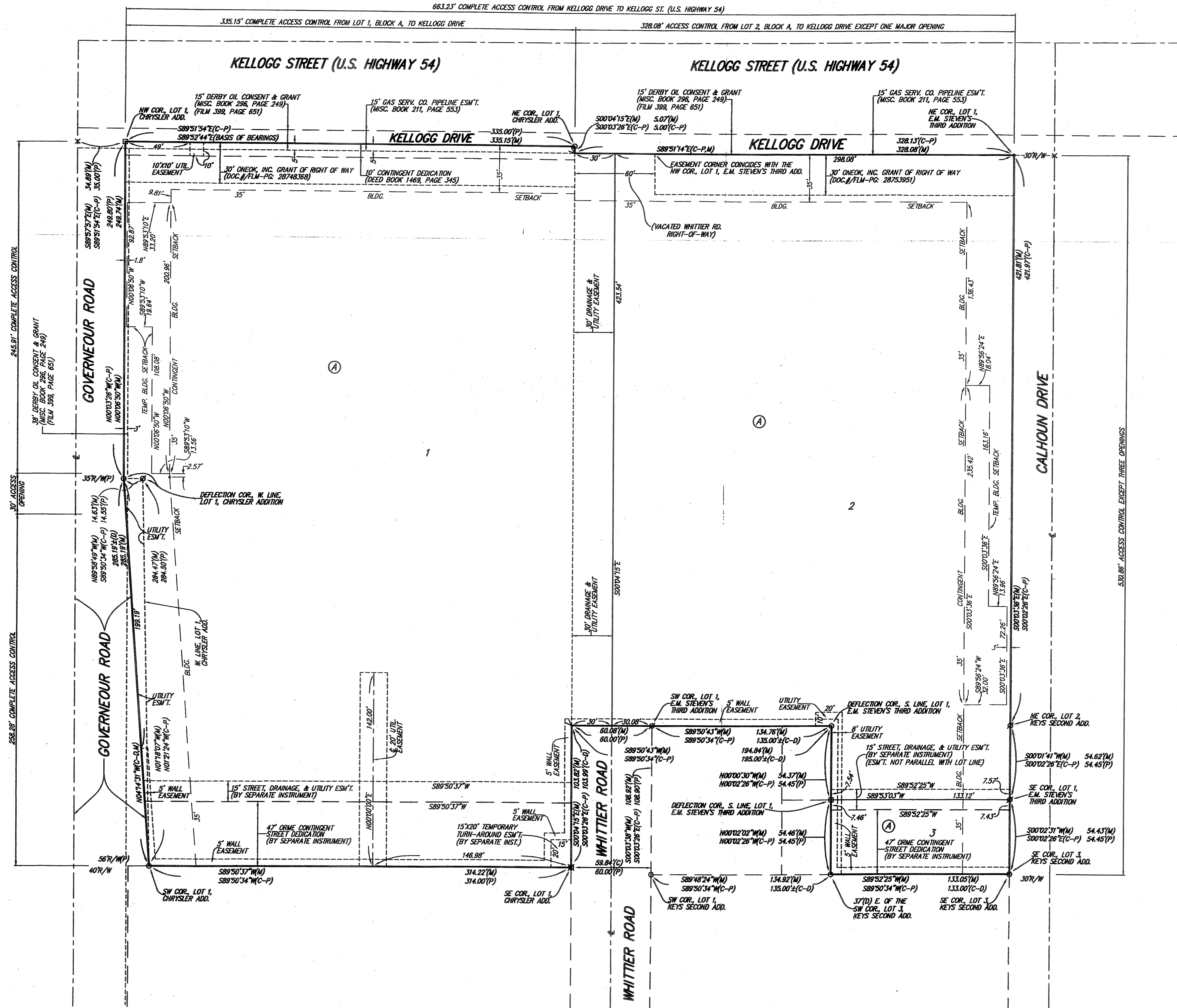


MIKE STEVEN MOTORS ADDITION WICHITA, SEDGWICK COUNTY, KANSAS



NOTE:
ADDITIONAL BUILDING SETBACKS AND OTHER REQUIREMENTS PER MIKE STEVEN MOTORS COMMUNITY UNIT PLAN, (DP-308).

- = #4 REBAR W/ "BAUGHMAN" CAP (SET)
- = 1/2" IRON (FOUND)
- = #4 REBAR W/ "BAUGHMAN" CAP (FOUND)
- ⊗ = #6 SMOOTH REBAR (FOUND)
- ∅ = 3/4" IRON (FOUND)
- ∨ = "V" NOTCH (SET)
- × = CROSS CUT (SET)

- (M) = MEASURED
- (P) = PLATTED
- (C) = CALCULATED
- (D) = DESCRIBED
- (C-D) = CALCULATED PER DESCRIBED INFO.
- (C-P) = CALCULATED PER PLATTED INFO.

NOTE:
A DRAINAGE PLAN HAS BEEN DEVELOPED FOR THIS SUBDIVISION AND IS ON FILE WITH THE CITY OF WICHITA, KANSAS. DRAINAGE INTENT SHALL REMAIN AS DEPICTED OR AS MODIFIED WITH THE APPROVAL OF THE CITY ENGINEER OF THE CITY OF WICHITA, KANSAS. NO OBSTRUCTIONS WHICH IMPEDE THE FLOW OF THIS DRAINAGE PLAN SHALL BE ALLOWED.