

**Benchmarks**

Benchmark #1 - "V" Notch in sidewalk adjacent to Whittier (Abandoned) West of Whittier and South of Kellogg Drive. Elev. = 1345.54

Benchmark #2 - "□" On top of East curb on Whittier and south property line. Elev. = 1345.38

Existing Manhole

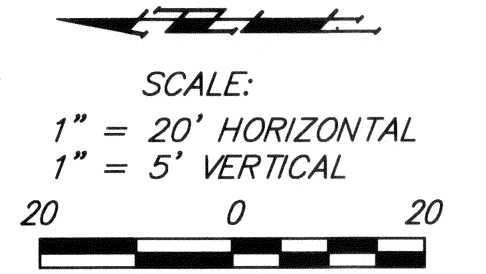
Contractor Shall Follow All Applicable Best Management Practices (BMP) For Erosion Control.

Contractor To Use Extreme Caution When Excavating Near Utility Lines. Contractor To Hand Dig To Expose All Utility Lines Prior To Construction. Verify Depth To Determine Conflict If Any.

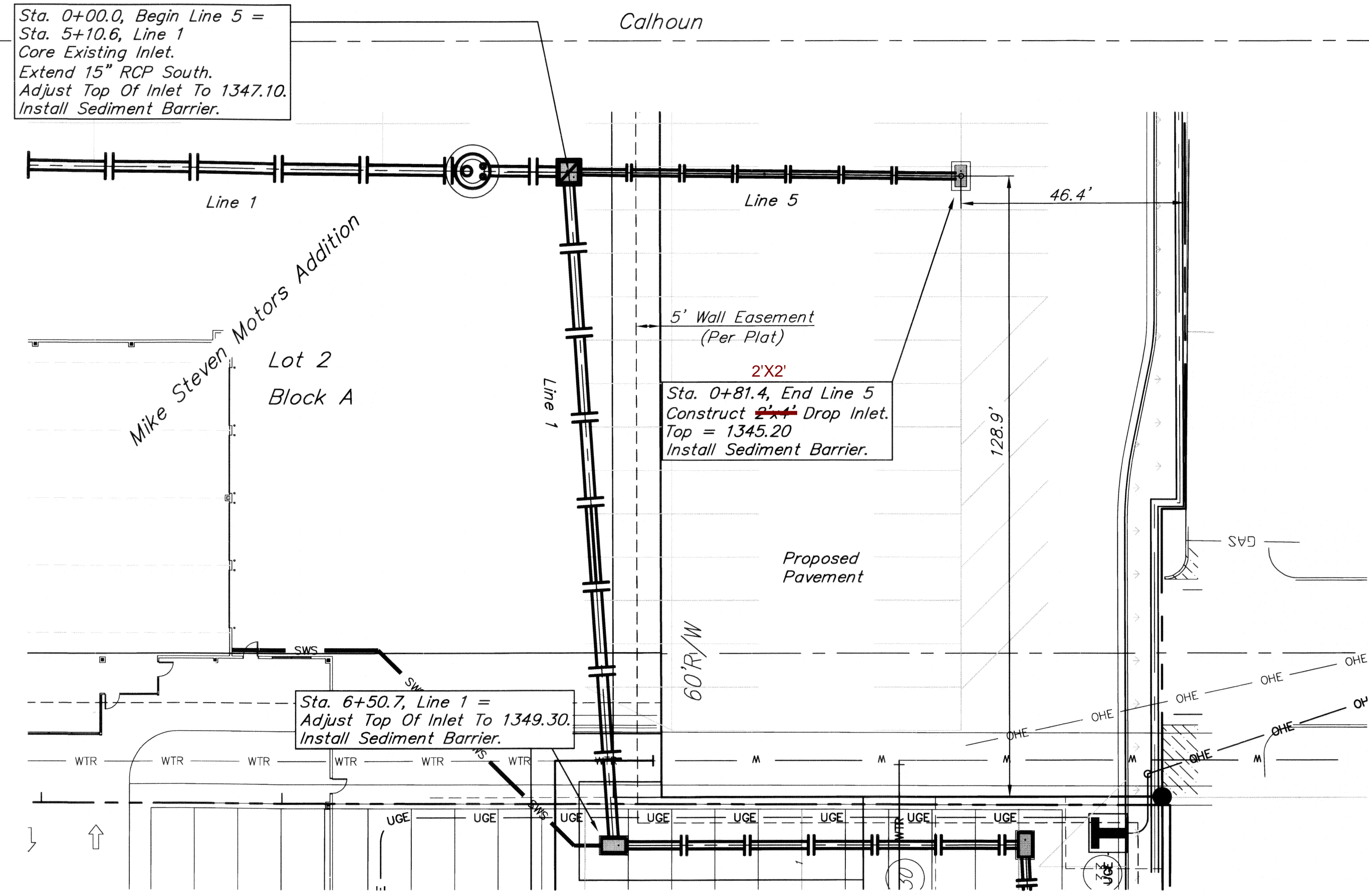
Sta. 0+00.0, Begin Line 5 =  
Sta. 5+10.6, Line 1  
Core Existing Inlet.  
Extend 15" RCP South.  
Adjust Top Of Inlet To 1347.10.  
Install Sediment Barrier.

Sta. 6+50.7, Line 1 =  
Adjust Top Of Inlet To 1349.30.  
Install Sediment Barrier.

Sta. 0+81.4, End Line 5  
Construct 2'x2' Drop Inlet.  
Top = 1345.20  
Install Sediment Barrier.



**NOTE:**  
Contractor Shall Sand Backfill, Flush, & Vibrate Storm Water Sewer Trenches When Pipe Is Under Pavement.

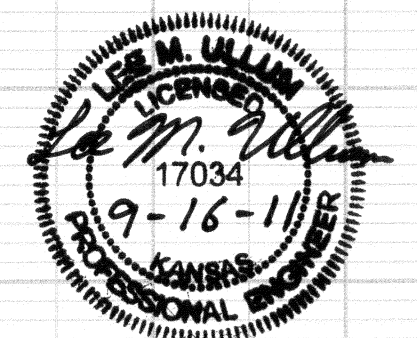
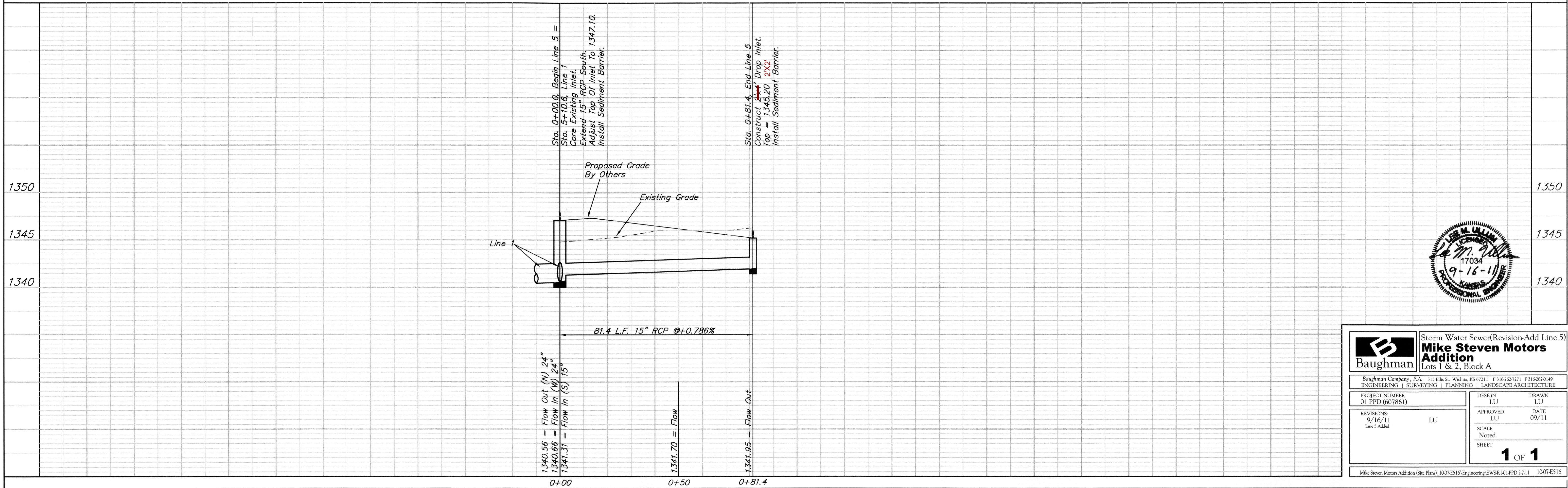


**AS BUILTS**

**kemiller engineering**

516 S. Market,  
Wichita, KS 67202

(316)264-0242



**Baughman** Storm Water Sewer(Revision-Add Line 5)  
**Mike Steven Motors Addition**  
Lots 1 & 2, Block A

Baughman Company, P.A. 313 Ellis St. Wichita, KS 67211 F 316-262-7271 F 316-262-0149  
ENGINEERING | SURVEYING | PLANNING | LANDSCAPE ARCHITECTURE

PROJECT NUMBER 01 PPD (607861)	DESIGN LU	DRAWN LU
REVISIONS: 9/16/11 Line 5 Added	APPROVED LU	DATE 09/11
	SCALE Noted	SHEET 1 OF 1

Mike Steven Motors Addition (Site Plans) 10/07/11 Engineering/SWSR(101)PPD 2-11 1007-E516