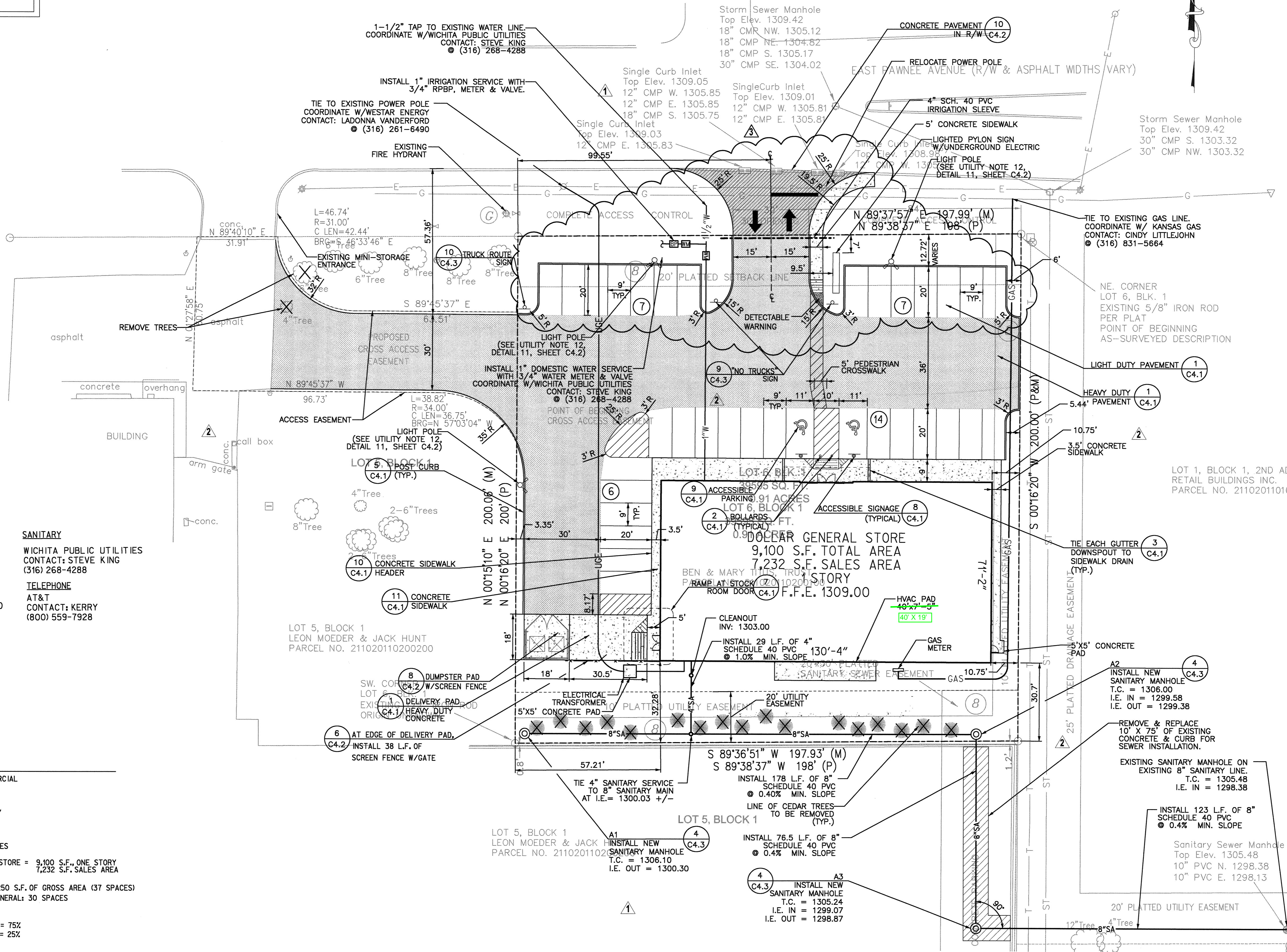
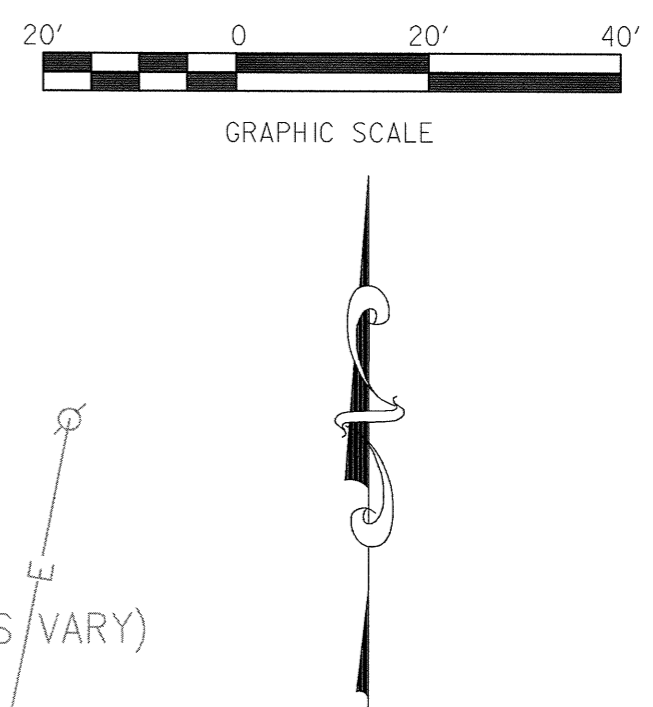


STRIPING LEGEND	
YELLOW CURBING AND BOLLARDS - PARKING LOT	SURFACES SHOULD BE CLEAN, DRY AND METAL SURFACES FREE OF HEAVY RUST 2 COATS SHERWIN WILLIAMS - KEM 4000 ACRYLIC ALKYD ENAMEL SAFETY YELLOW B55300
STRIPING - PARKING LOT	SURFACES SHOULD BE CLEAN, DRY, TOP COAT SHERWIN WILLIAMS - PRO MAR TRAFFIC MARKING PAINT YELLOW TMS495
HANDICAP STRIPING - PARKING LOT	SURFACES SHOULD BE CLEAN, DRY, TOP COAT SHERWIN WILLIAMS - PRO MAR TRAFFIC MARKING PAINT "H.C." BLUE

CONTRACTOR IS RESPONSIBLE FOR ALL PUBLIC UTILITY CONNECTIONS (ELECTRIC, WATER, GAS, SEWER) AS WELL AS PROVIDING ALL INFRASTRUCTURES REQUIRED BY UTILITY COMPANY.

LAYOUT & PAVING AND GENERAL UTILITY NOTES LOCATED ON DETAIL 11, SHEET C4.2



WATER COMPANY
WICHITA PUBLIC UTILITIES
CONTACT: STEVE KING
(316) 268-4288

ELECTRIC
WESTAR ENERGY
CONTACT: LADONNA VANDERFORD
(316) 261-6490

GAS
KANSAS GAS
CONTACT: CINDY LITTLEJOHN
(316) 831-5664

SANITARY
WICHITA PUBLIC UTILITIES
CONTACT: STEVE KING
(316) 268-4288

TELEPHONE
AT&T
CONTACT: KERRY
(800) 559-7928

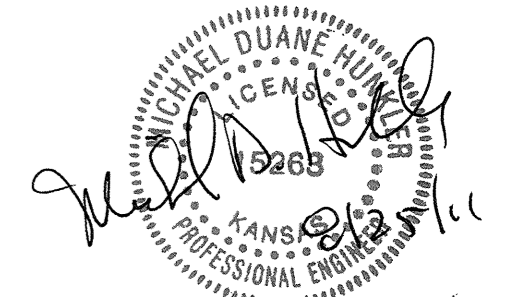
SITE DATA TABLE

- PROPERTY ZONED: GENERAL COMMERCIAL
- SET BACKS: FRONT = 20'
SIDE (INTERIOR) = 0'
SIDE (R.O.W.) = 0'
REAR = 0'
- SITE AREA: 39,595 S.F. = 0.91 ACRES
- BUILDING AREA: DOLLAR GENERAL STORE = 9,100 S.F., ONE STORY
7,232 S.F. SALES AREA
- PARKING REQUIRED BY ZONING: 1/250 S.F. OF GROSS AREA (37 SPACES)
PARKING REQUIRED BY DOLLAR GENERAL: 30 SPACES
PARKING PROVIDED: 34 SPACES
- IMPERVIOUS AREA = 0.684 ACRES = 75%
LANDSCAPE AREA = 0.226 ACRES = 25%



ARCHITECTURE
PLANNING
ENGINEERING
GRAPHICS

105 BROADWAY
4TH FLOOR
NASHVILLE, TN 37201
(P) 615.244.8170
(F) 615.244.8141
www.mjmarsh.com



MICHAEL DUANE HUNKLER
REG.# 15263



CIVIL ENGINEER
GRESHAM SMITH AND PARTNERS
511 Union Street
1400 Nashville City Center
Nashville, Tennessee 37219
Phone: (615) 770-8100
CSP #28359.00



GB REALTY CORPORATION
201 Summit Drive Suite 110
Brentwood, TN 37027
615-370-6070
Fax: 615-373-3111
www.gbrealty.com

DOLLAR GENERAL
STORE # XXXX
WICHITA,
KS AT
PAWNEE

06.07.11
MJM 11074

DATE	COMMENTS
07.05.11	CITY COMMENTS
08.01.11	CITY COMMENTS
08.24.11	MOVED ENTRANCE

This drawing and the design shown is the property of the architect. The reproduction, copying or use of this drawing without the written consent is prohibited and any infringement will be subject to legal action.

SITE LAYOUT & UTILITY PLAN

C2.1

ARCHITECTS
CONSULTANT
OWNER
LOCATION
DATE
SHEET