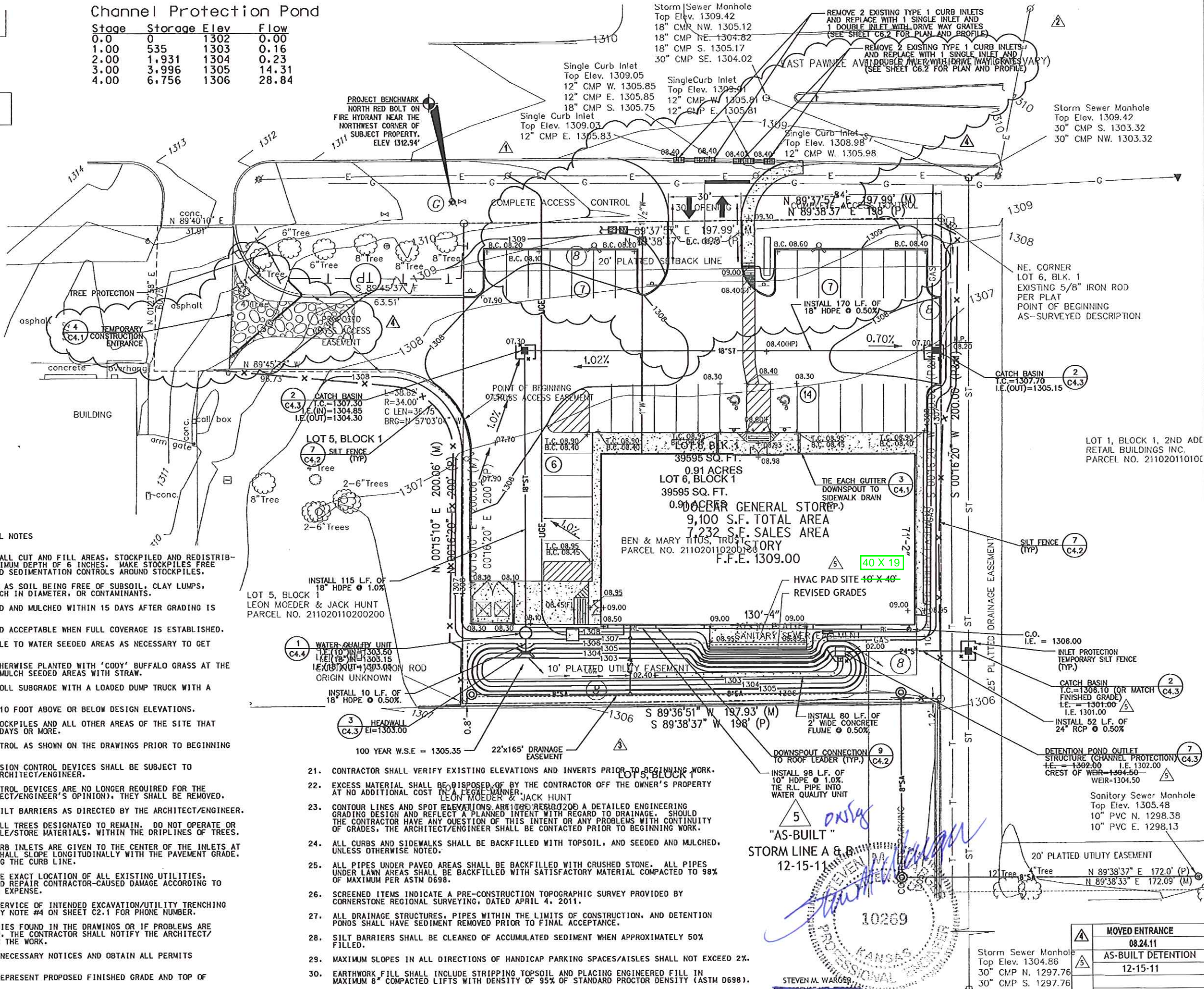


Channel Protection Pond

Stage	Storage	Elev	Flow
0.0	0	1302	0.00
1.00	535	1303	0.16
2.00	1,931	1304	0.23
3.00	3,996	1305	14.31
4.00	6,756	1306	28.84

one, to 2007.



GRADING, DRAINAGE AND EROSION CONTROL NOTES

- TOPSOIL SHALL BE STRIPPED FROM ALL CUT AND FILL AREAS, STOCKPILED AND REDISTRIBUTED OVER GRADED AREAS TO A MINIMUM DEPTH OF 6 INCHES. MAKE STOCKPILES FREE DRAINING AND PROVIDE EROSION AND SEDIMENTATION CONTROLS AROUND STOCKPILES.
- SATISFACTORY TOPSOIL IS DEFINED AS SOIL BEING FREE OF SUBSOIL, CLAY LUMPS, STONES, OTHER OBJECTS OVER 1 INCH IN DIAMETER, OR CONTAMINANTS.
- ALL GRADED AREAS SHALL BE SEEDED AND MULCHED WITHIN 15 DAYS AFTER GRADING IS COMPLETED.
- SEEDED AREAS SHALL BE CONSIDERED ACCEPTABLE WHEN FULL COVERAGE IS ESTABLISHED.
- GENERAL CONTRACTOR IS RESPONSIBLE TO WATER SEEDED AREAS AS NECESSARY TO GET VEGETATION ESTABLISHED.
- SEED ALL DISTURBED AREAS NOT OTHERWISE PLANTED WITH 'CODY' BUFFALO GRASS AT THE RATE OF 2 LBS. PER 1,000 S.F. MULCH SEEDED AREAS WITH STRAW.
- AFTER STRIPPING TOPSOIL, PROOFROLL SUBGRADE WITH A LOADED DUMP TRUCK WITH A MINIMUM WEIGHT OF 16 TONS.
- FINISH GRADES TOLERANCES ARE 0.10 FOOT ABOVE OR BELOW DESIGN ELEVATIONS.
- PROVIDE TEMPORARY SEEDING ON STOCKPILES AND ALL OTHER AREAS OF THE SITE THAT WILL REMAIN UNDISTURBED FOR 30 DAYS OR MORE.
- CONSTRUCT TEMPORARY EROSION CONTROL AS SHOWN ON THE DRAWINGS PRIOR TO BEGINNING GRADING OPERATIONS.
- ALL LOCATIONS OF TEMPORARY EROSION CONTROL DEVICES SHALL BE SUBJECT TO ADJUSTMENT AS DIRECTED BY THE ARCHITECT/ENGINEER.
- WHEN THE TEMPORARY EROSION CONTROL DEVICES ARE NO LONGER REQUIRED FOR THE INTENDED PURPOSE (IN THE ARCHITECT/ENGINEER'S OPINION), THEY SHALL BE REMOVED.
- REPLACE DAMAGED AND WORN OUT SILT BARRIERS AS DIRECTED BY THE ARCHITECT/ENGINEER.
- THE CONTRACTOR SHALL PROTECT ALL TREES DESIGNATED TO REMAIN. DO NOT OPERATE OR STORE HEAVY EQUIPMENT, NOR HANDLE/STORE MATERIALS, WITHIN THE DRIP LINES OF TREES.
- TOP OF GRATE ELEVATIONS FOR CURB INLETS ARE GIVEN TO THE CENTER OF THE INLETS AT THE FACE OF CURB. THE GRATES SHALL SLOPE LONGITUDINALLY WITH THE PAVEMENT GRADE, ADJUST THE CASTING TO FALL ALONG THE CURB LINE.
- THE CONTRACTOR SHALL VERIFY THE EXACT LOCATION OF ALL EXISTING UTILITIES, PROTECT UTILITIES TO REMAIN, AND REPAIR CONTRACTOR-CAUSED DAMAGE ACCORDING TO LOCAL STANDARDS AT CONTRACTOR'S EXPENSE.
- NOTIFY LOCAL UTILITY LOCATOR SERVICE OF INTENDED EXCAVATION/UTILITY TRENCHING OPERATIONS. SEE GENERAL UTILITY NOTE #4 ON SHEET C2.1 FOR PHONE NUMBER.
- IN THE EVENT OF ANY DISCREPANCIES FOUND IN THE DRAWINGS OR IF PROBLEMS ARE ENCOUNTERED DURING CONSTRUCTION, THE CONTRACTOR SHALL NOTIFY THE ARCHITECT/ENGINEER BEFORE PROCEEDING WITH THE WORK.
- THE CONTRACTOR SHALL GIVE ALL NECESSARY NOTICES AND OBTAIN ALL PERMITS AND CITY APPROVED DRAWINGS.
- SPOT ELEVATIONS AND CONTOURS REPRESENT PROPOSED FINISHED GRADE AND TOP OF FINISHED PAVEMENT.

- CONTRACTOR SHALL VERIFY EXISTING ELEVATIONS AND INVERTS PRIOR TO BEGINNING WORK.
- EXCESS MATERIAL SHALL BE DISPOSED OF BY THE CONTRACTOR OFF THE OWNER'S PROPERTY AT NO ADDITIONAL COST IN A LEGAL MANNER.
- CONTOUR LINES AND SPOT ELEVATIONS ARE TO BE USED TO DEVELOP A DETAILED ENGINEERING GRADING DESIGN AND REFLECT A PLANNED INTENT WITH REGARD TO DRAINAGE. SHOULD THE CONTRACTOR HAVE ANY QUESTION OF THIS INTENT OR ANY PROBLEMS WITH CONTINUITY OF GRADES, THE ARCHITECT/ENGINEER SHALL BE CONTACTED PRIOR TO BEGINNING WORK.
- ALL CURBS AND SIDEWALKS SHALL BE BACKFILLED WITH TOPSOIL, AND SEEDED AND MULCHED, UNLESS OTHERWISE NOTED.
- ALL PIPES UNDER PAVED AREAS SHALL BE BACKFILLED WITH CRUSHED STONE. ALL PIPES UNDER LAWN AREAS SHALL BE BACKFILLED WITH SATISFACTORY MATERIAL COMPACTED TO 98% OF MAXIMUM PER ASTM D698.
- SCREENED ITEMS INDICATE A PRE-CONSTRUCTION TOPOGRAPHIC SURVEY PROVIDED BY CORNERSTONE REGIONAL SURVEYING, DATED APRIL 4, 2011.
- ALL DRAINAGE STRUCTURES, PIPES WITHIN THE LIMITS OF CONSTRUCTION, AND DETENTION PONDS SHALL HAVE SEDIMENT REMOVED PRIOR TO FINAL ACCEPTANCE.
- SILT BARRIERS SHALL BE CLEANED OF ACCUMULATED SEDIMENT WHEN APPROXIMATELY 50% FILLED.
- MAXIMUM SLOPES IN ALL DIRECTIONS OF HANDICAP PARKING SPACES/AISLES SHALL NOT EXCEED 2%.
- EARTHWORK FILL SHALL INCLUDE STRIPPING TOPSOIL AND PLACING ENGINEERED FILL IN MAXIMUM 8" COMPACTED LIFTS WITH DENSITY OF 95% OF STANDARD PROCTOR DENSITY (ASTM D698).

10269
 STEVEN M. WARGER
 PROFESSIONAL ENGINEER
 KANSAS
 12-15-11



ARCHITECTURE
 PLANNING
 ENGINEERING
 GRAPHICS

165 BROADWAY
 4TH FLOOR
 NASHVILLE, TN 37201
 (P) 615.244.8170
 (F) 615.244.8141
 www.mmarch.com



CIVIL ENGINEER
 GRESHAM
 SMITH AND
 PARTNERS

511 Union Street
 1400 Nashville City Center
 Nashville, Tennessee 37219
 Phone: (615)770-8100
 GSP #28359.00



DOLLAR GENERAL
 STORE #: XXXX
 WICHITA,
 KS AT
 PAWNEE

08.07.11
 MJM 11074

NO.	DATE	DESCRIPTION
1	07.05.11	CITY COMMENTS
2	08.01.11	CITY COMMENTS
3	08.08.11	ADD DRAINAGE EASEMENT

GRADING, DRAINAGE & EROSION CONTROL PLAN

C3.1

ARCHITECTS
 SEAL
 CONSULTANT
 OWNER
 LOCATION
 DATE
 SHEET