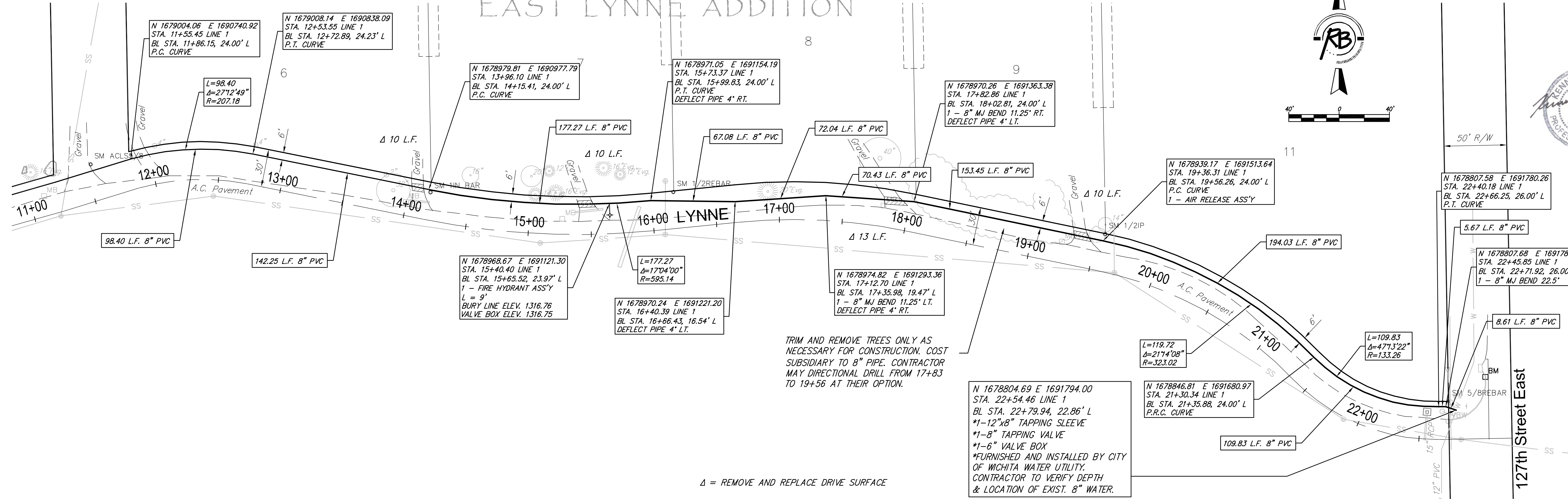
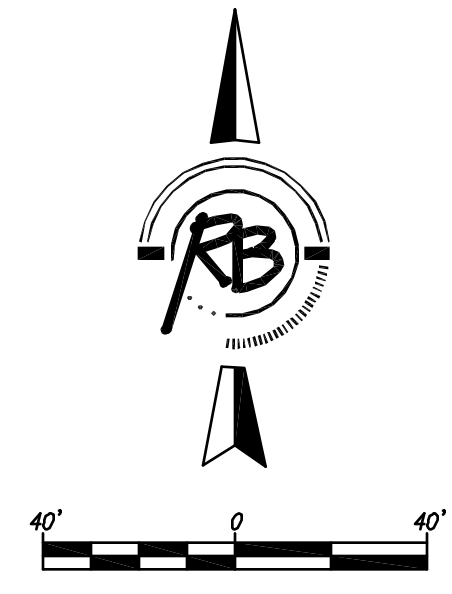
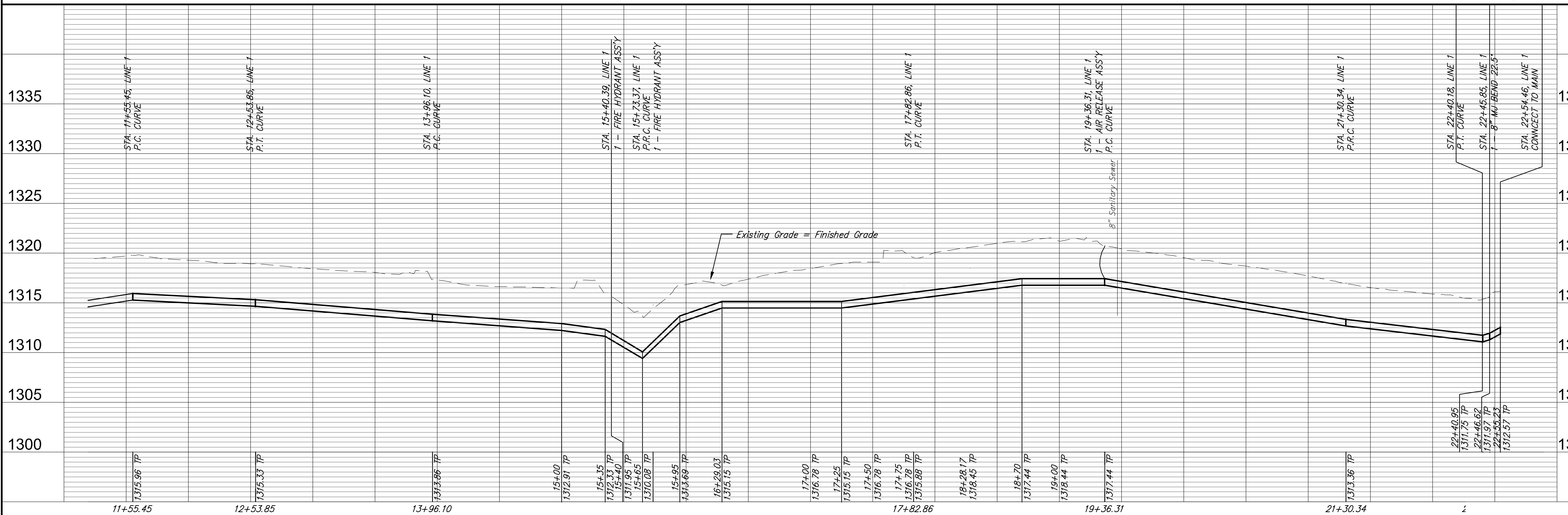


# EAST LYNNE ADDITION



Δ = REMOVE AND REPLACE DRIVE SURFACE

N 1678804.69 E 1691794.00  
 STA. 22+54.46 LINE 1  
 BL STA. 22+79.94, 22.86' L  
 \*1-12"x8" TAPPING SLEEVE  
 \*1-8" TAPPING VALVE  
 \*1-6" VALVE BOX  
 \*FURNISHED AND INSTALLED BY CITY OF WICHITA WATER UTILITY.  
 CONTRACTOR TO VERIFY DEPTH & LOCATION OF EXIST. 8" WATER.



PROJECT NUMBER <b>448-90535</b>	DESIGN K.W./R.A.	DRAWN R.A.	REVIEWED
DRAWING FILE	UTILITY	DATE	REVIEW
<b>WATER DISTRIBUTION SYSTEM</b>			
<b>LINE 1</b>			
<b>WICHITA, KANSAS</b>			
PROJECT NO. 3869E	SHEET 9	DATE 7	