

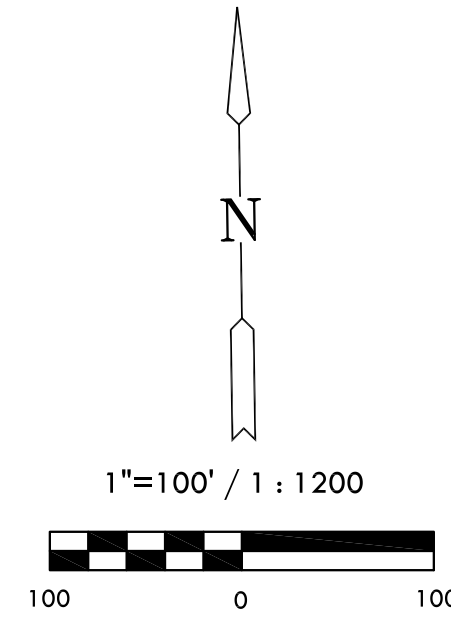
FINAL PLAT

KRUG SOUTH ADDITION

AN ADDITION TO WICHITA, SEDGWICK COUNTY, KANSAS

NW. Cor., NE 1/4, Sec. 11,
T27S, R2E, 6th P.M.
Fnd. 1/2" Pipe

NE. Cor., NE 1/4, Sec. 11,
T27S, R2E, 6th P.M.
Fnd. 1/2" w/ cap



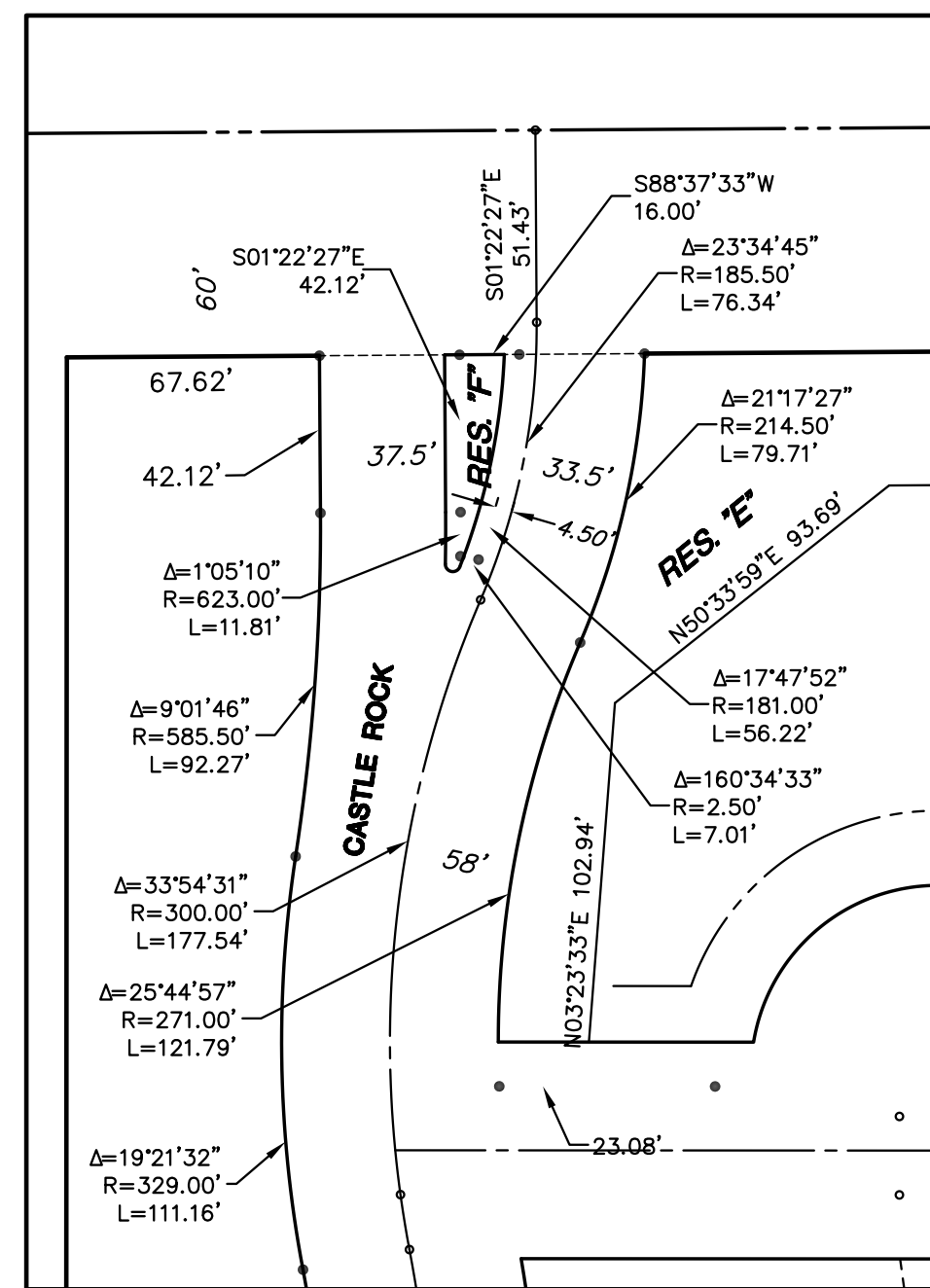
Basis of Bearings: Kansas Coordinate System 1983 South Zone bearing of
N88°37'33"E along the N. Line of NE. 1/4, Sec. 11 T27S, R2E, 6th P.M.

LEGEND

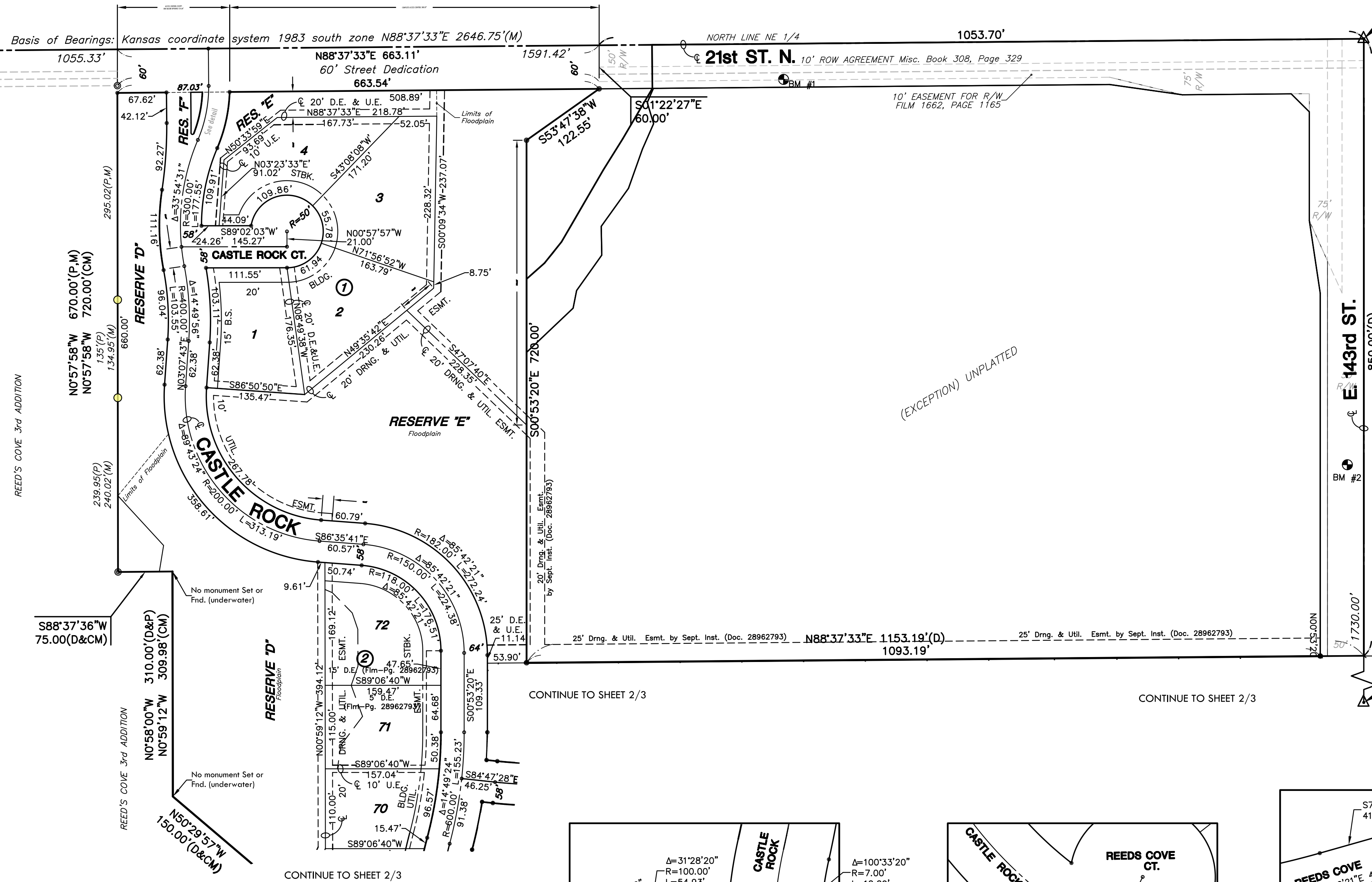
Date of Survey: September, 2007

- △ = Section Corner Monument Found
- ⊙ = Found 3/8" Rebar w/ MKEC
CLS 39 id. cap
- = Set 3/8" Rebar w/ MKEC
CLS 39 id. cap
- = Found 1/2" Rebar w/ Baughman id. cap
- (M) = Measured
- (CM) = Calculated from measured
- (P) = Platted
- (D) = Deeded or Described

MINIMUM PAD ELEVATIONS LOWEST OPENINGS		
LOTS (inclusive)	BLOCK	ELEVATION NGVD
26	1	1359.7
27	1	1360.0
28 and 29	1	1360.7
71	2	1359.3
72	2	1359.5

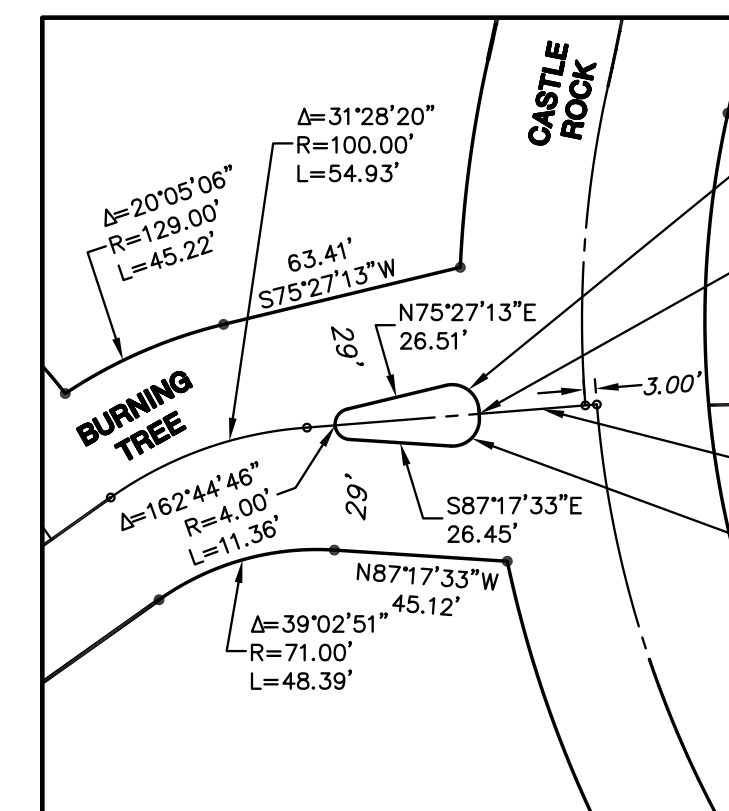


DETAIL RESERVE "F"
1"=50'

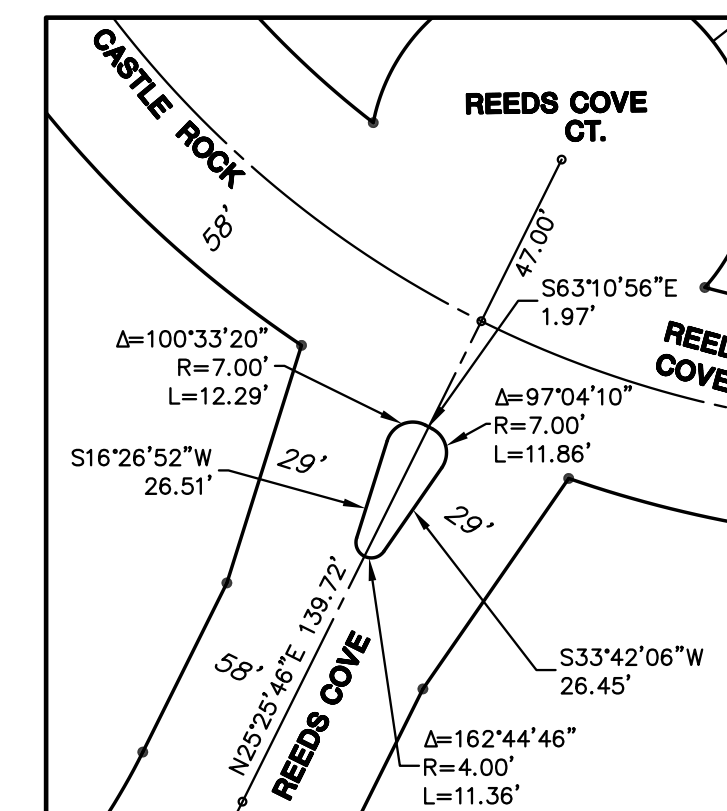


BENCH MARKS

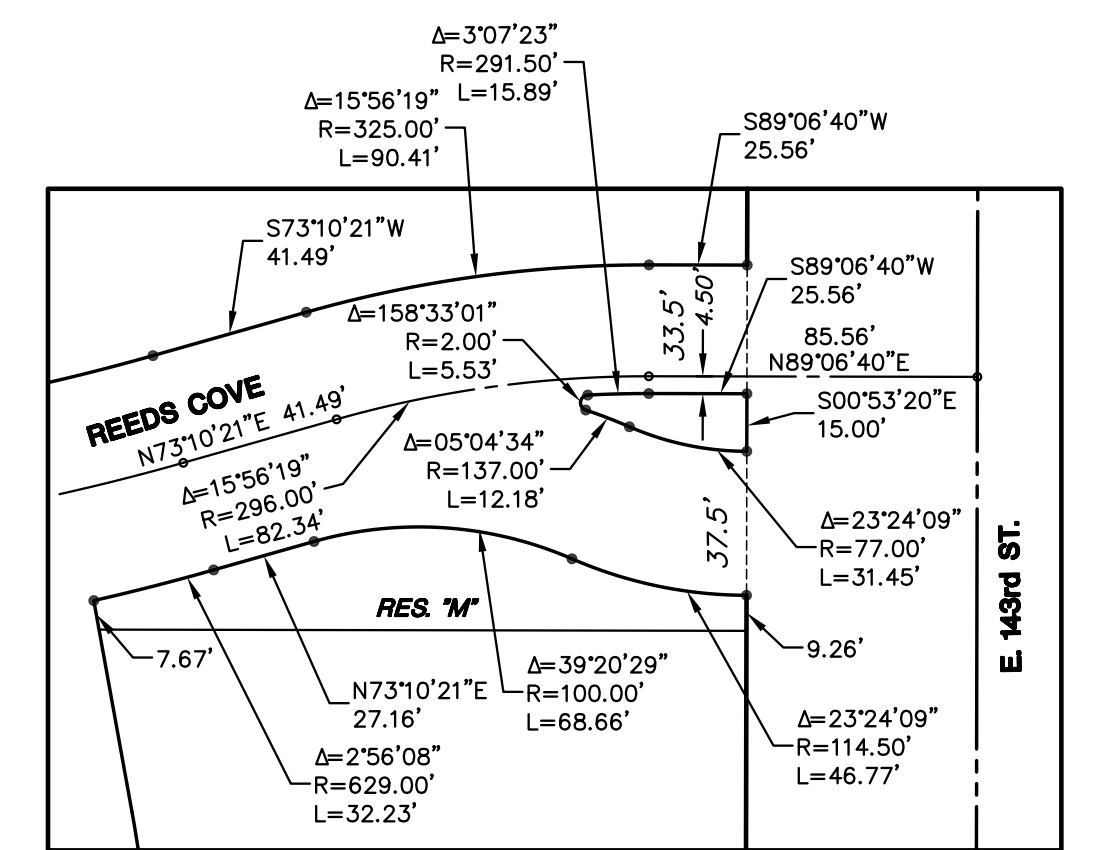
- Datum BM: at NE corner of inlet on S. side of
Williamsgate over bridge in
Hawthorne Addition.
Elev. = 1355.74 (NGVD 29)
- BM#1: RR spike in S. face of PP, 3rd PP W. of
143rd St. (799' from CL) S. side of 21st
St. (49' from CL)
Elev. = 1362.17 (NGVD 29)
- BM#2: FH NE bolt w/ tag on top of flange,
W. side of 143rd St. NW of drive. (23'
from CL)
Elev. = 1382.81 (NGVD 29)



DETAIL RESERVE "G"
1"=50'



DETAIL RESERVE "K"
1"=50'



DETAIL RESERVES "L" & "M"
1"=50'