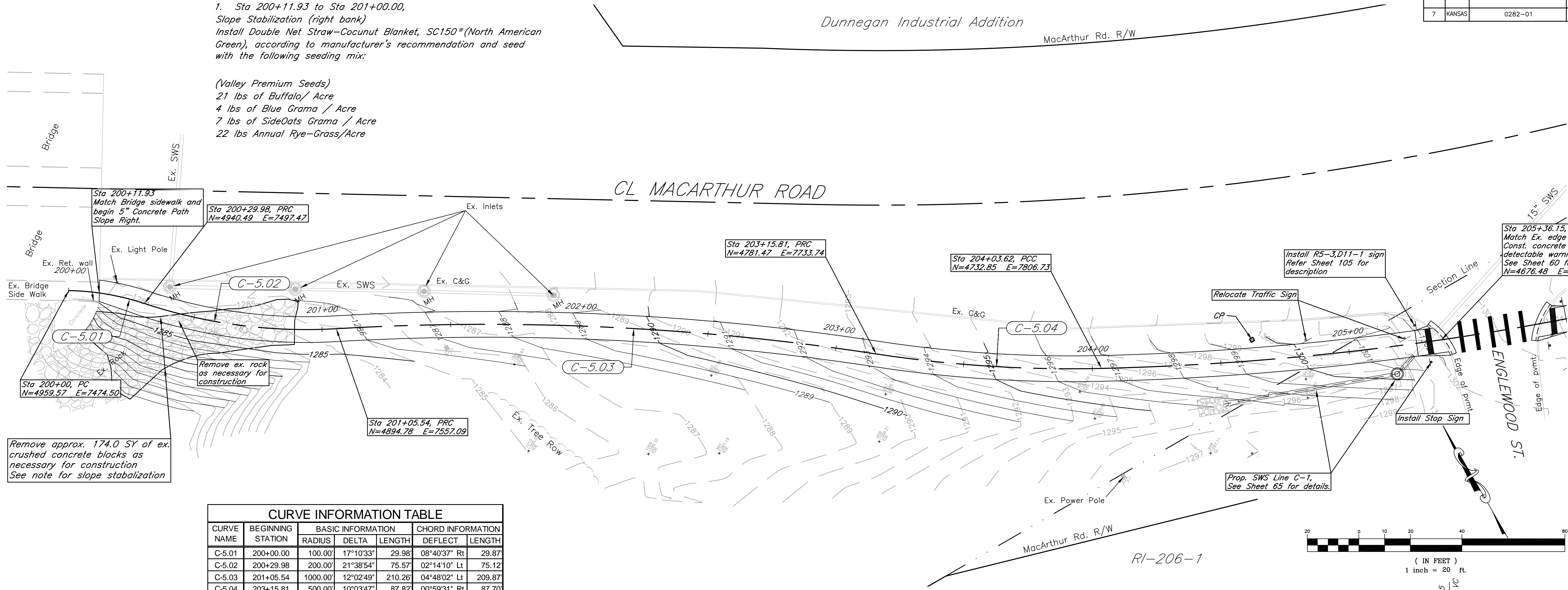


FHWA REG. NO.	STATE	PROJECT NO.	YEAR	SHEET NUMBER	TOTAL SHEETS
7	KANSAS	0282-01	2010	38	112

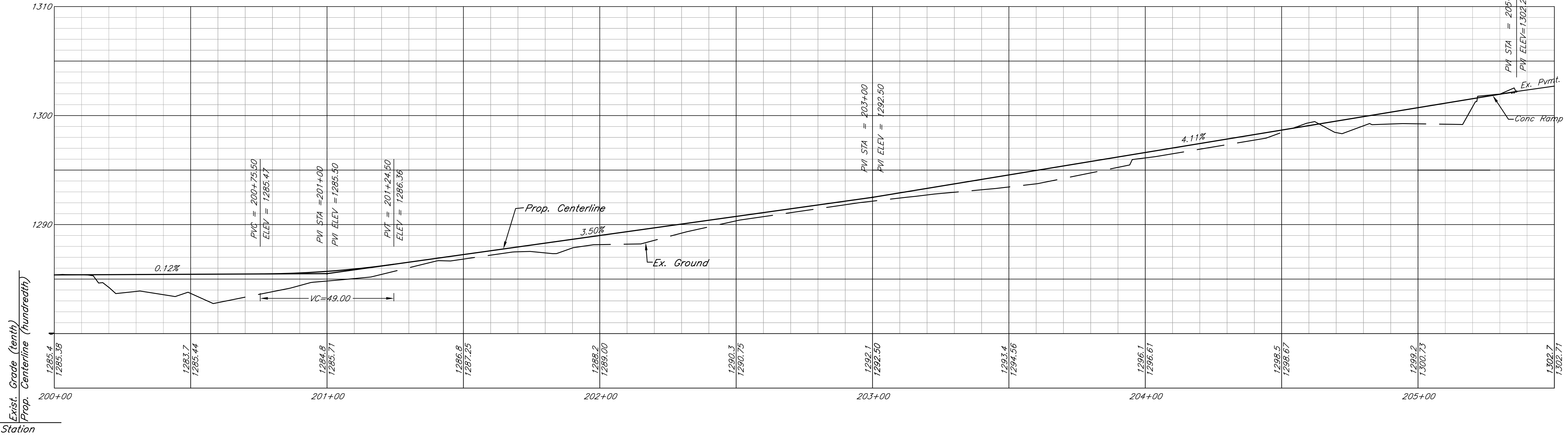
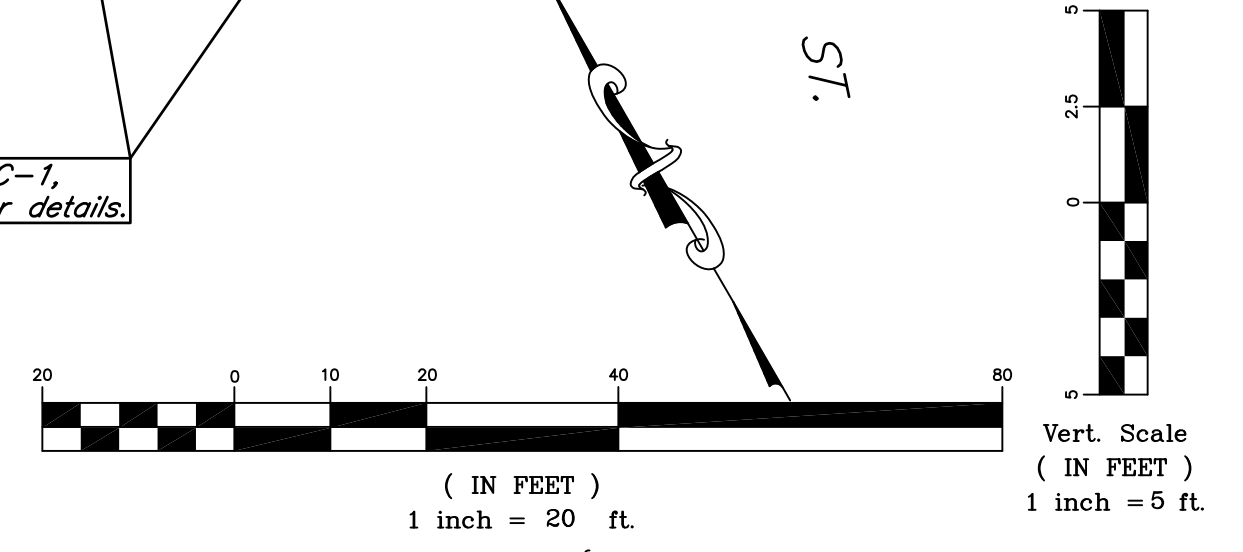
**Note:**

1. Sta 200+11.93 to Sta 201+00.00,  
Slope Stabilization (right bank)  
Install Double Net Straw-Cocunut Blanket, SC150® (North American Green), according to manufacturer's recommendation and seed with the following seeding mix:

(Valley Premium Seeds)  
21 lbs of Buffalo / Acre  
4 lbs of Blue Grama / Acre  
7 lbs of SideOats Grama / Acre  
22 lbs Annual Rye-Grass/Acre



CURVE NAME	BEGINNING STATION	BASIC INFORMATION			CHORD INFORMATION	
		RADIUS	DELTA	LENGTH	DEFLECT	LENGTH
C-5.01	200+00.00	100.00'	17°10'33"	29.98'	08°40'37" Rt	29.87'
C-5.02	200+29.98	200.00'	21°38'54"	75.57'	02°14'10" Lt	75.12'
C-5.03	201+05.54	1000.00'	12°02'49"	210.26'	04°48'02" Lt	209.87'
C-5.04	203+15.81	500.00'	10°03'47"	87.82'	00°59'31" Rt	87.70'



**kemiller engineering**  
316/284-0242  
516 S. Market, Wichita, KS 67202

City of Wichita Bike Path Expansion  
Sta. 200+00 - 205+50  
Wichita, Kansas

PROJECT NUMBER: 472-84932  
OCA# 707030

KEM NO. 05168	FILE D01
DESIGN KM	DRAWN CD
DATE 08/2011	REVISED

SHEET 38 OF 112