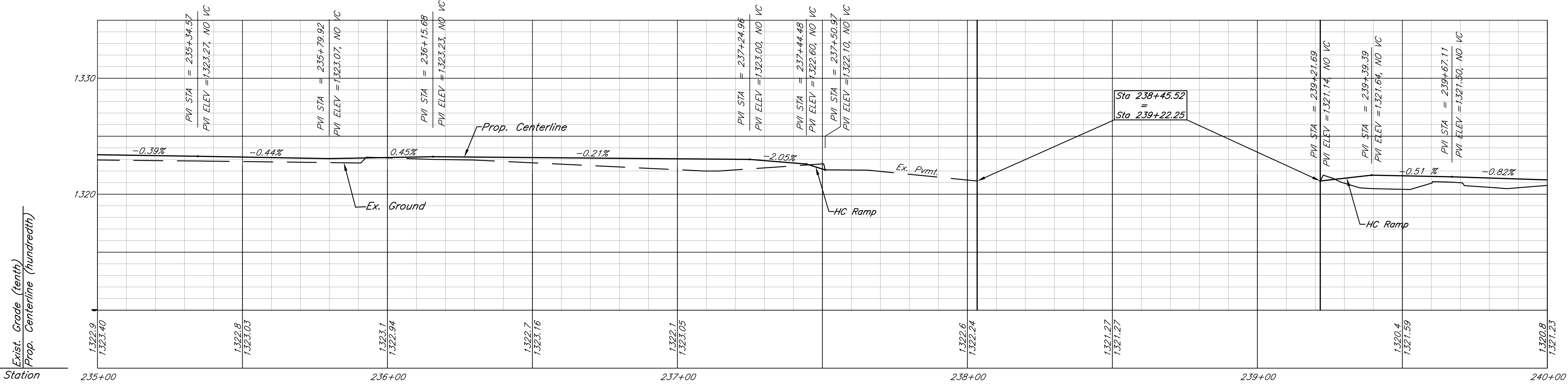
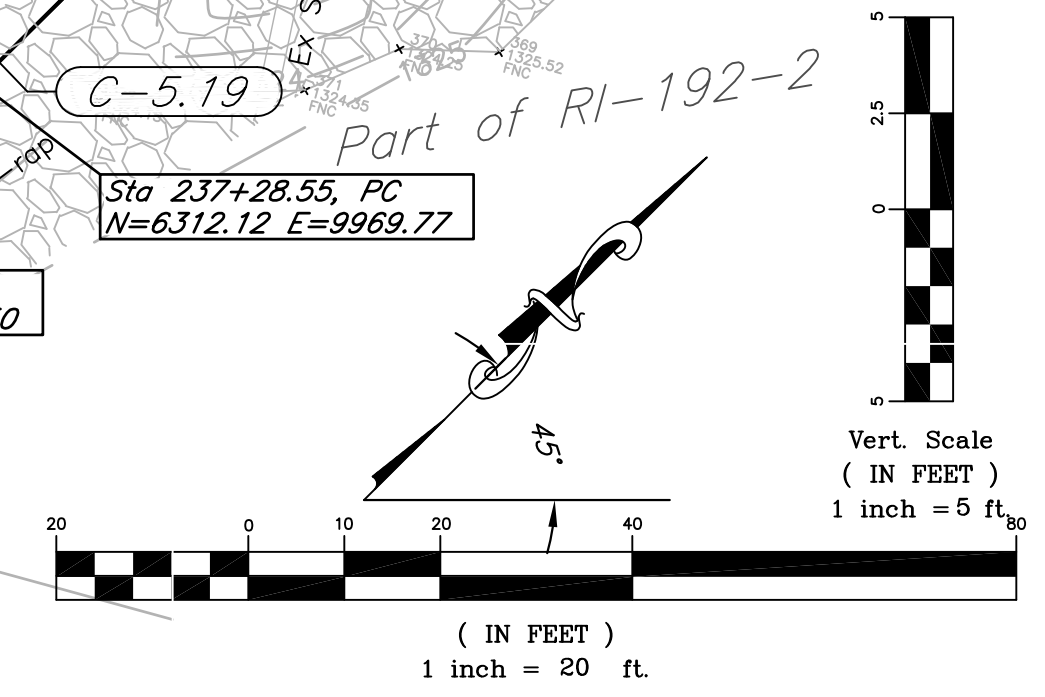
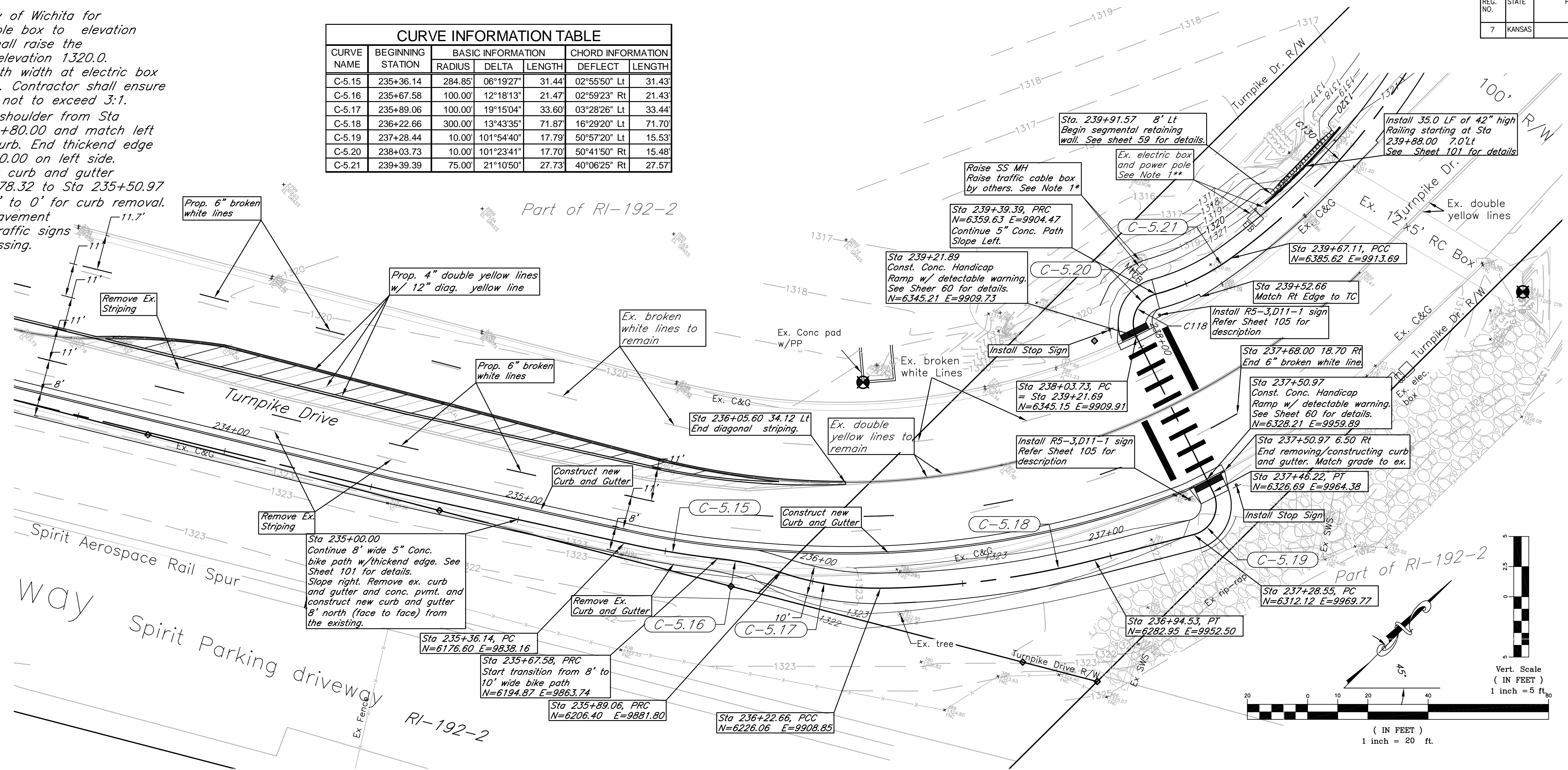


- Notes:
- * Coordinate with City of Wichita for raising the traffic cable box to elevation 1320.80. Contractor shall raise the sanitary sewer MH to elevation 1320.0.
** Reduce the bike path width at electric box and power pole crossing. Contractor shall ensure the grades west of box not to exceed 3:1.
 - Eliminate typical left shoulder from Sta 235+00.00 to Sta 235+80.00 and match left edge to the top of curb. End thickend edge concrete at Sta 235+80.00 on left side. See sheet 101 for new curb and gutter construction. Sta 235+78.32 to Sta 235+50.97 Start transition from 8' to 0' for curb removal.
 - See Sheet 104 for pavement marking and other traffic signs for Turnpike drive crossing.

CURVE NAME	BEGINNING STATION	BASIC INFORMATION			CHORD INFORMATION	
		RADIUS	DELTA	LENGTH	DEFLECT	LENGTH
C-5.15	235+36.14	284.85'	06°19'27"	31.44'	02°55'50" Lt	31.43'
C-5.16	235+67.58	100.00'	12°18'13"	21.47'	02°59'23" Rt	21.43'
C-5.17	235+89.06	100.00'	19°15'04"	33.60'	03°28'26" Lt	33.44'
C-5.18	236+22.66	300.00'	13°43'35"	71.87'	16°29'20" Lt	71.70'
C-5.19	237+28.44	10.00'	101°54'40"	17.79'	50°57'20" Lt	15.53'
C-5.20	238+03.73	10.00'	101°23'41"	17.70'	50°41'50" Rt	15.48'
C-5.21	239+39.39	75.00'	21°10'50"	27.73'	40°06'25" Rt	27.57'



kemiller engineering
316 S. Market, Wichita, KS 67202

City of Wichita Bike Path Expansion
Sta 235+00 to 240+00
Wichita, Kansas

PROJECT NUMBER: 472-84932
OCA# 707030

KEM NO. 05168	FILE dp1
DESIGN KM	DRAWN GP
DATE 08/2011	REVISED

SHEET 45 OF 112