

FHWA REG. NO.	STATE	PROJECT NO.:	YEAR	SHEET NUMBER	TOTAL SHEETS
7	KANSAS	0282-01	2011	59	112

GENERAL NOTES

The contractor shall provide and install from components supplied by Keystone, Mesa, Rockwood, or Versa-Lok, or an approved equal, in accordance with the supplier's recommendations and construction manual.

The wall shall be beveled faced. The color shall be Tan, as approved by the Engineer.

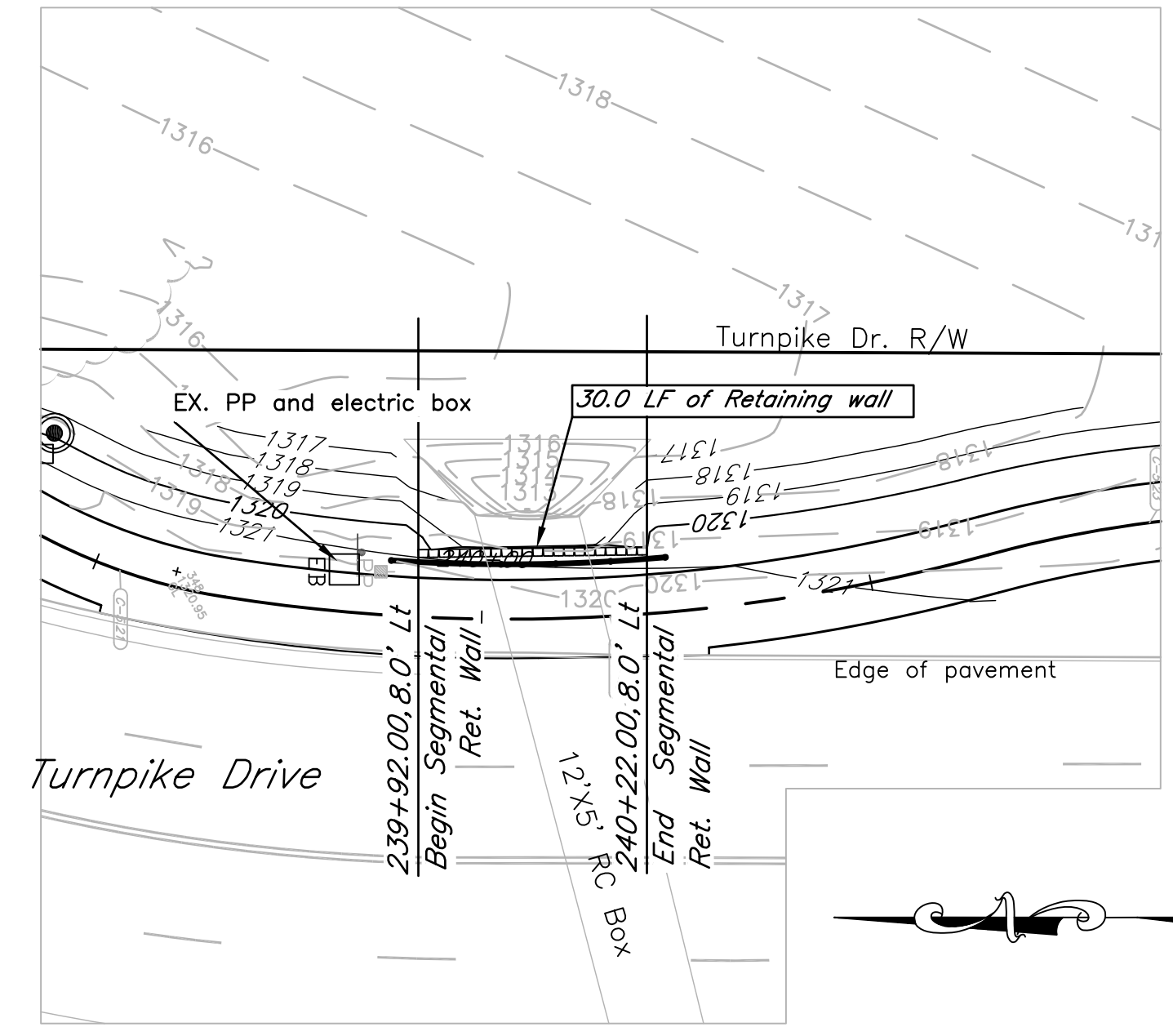
Segmental Retaining Wall will be paid for at the contract unit price bid per square foot as measured from the top of wall to the top of leveling pad. This payment will be considered full compensation for erection of the wall including but not limited to: excavation, grading and compaction of the wall foundation, general and local dewatering as required for proper execution of the work, construction of leveling pads, erection of the modular block wall elements, placement of geogrids and connectors and compaction of select backfill material within the reinforced soil volume, and providing and placing cap as required.

The contractor shall be responsible for locating all underground utilities prior to construction.

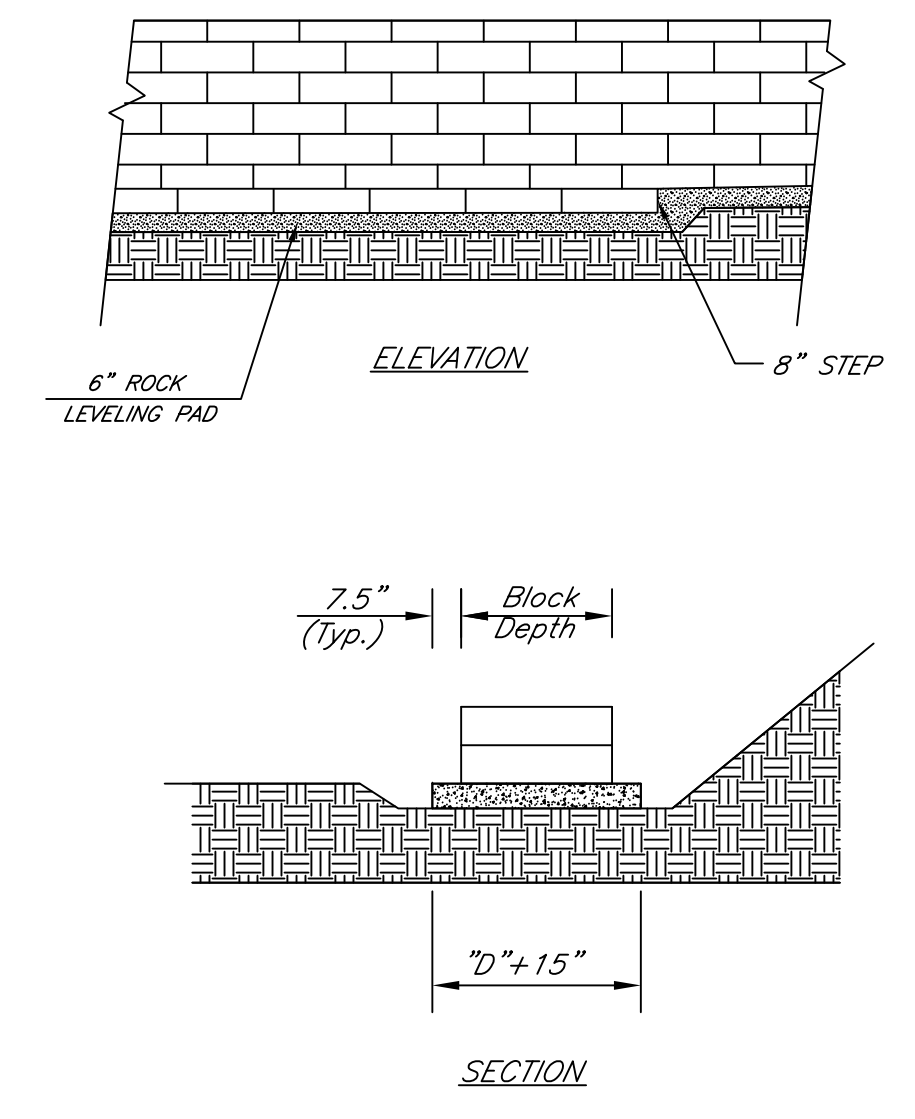
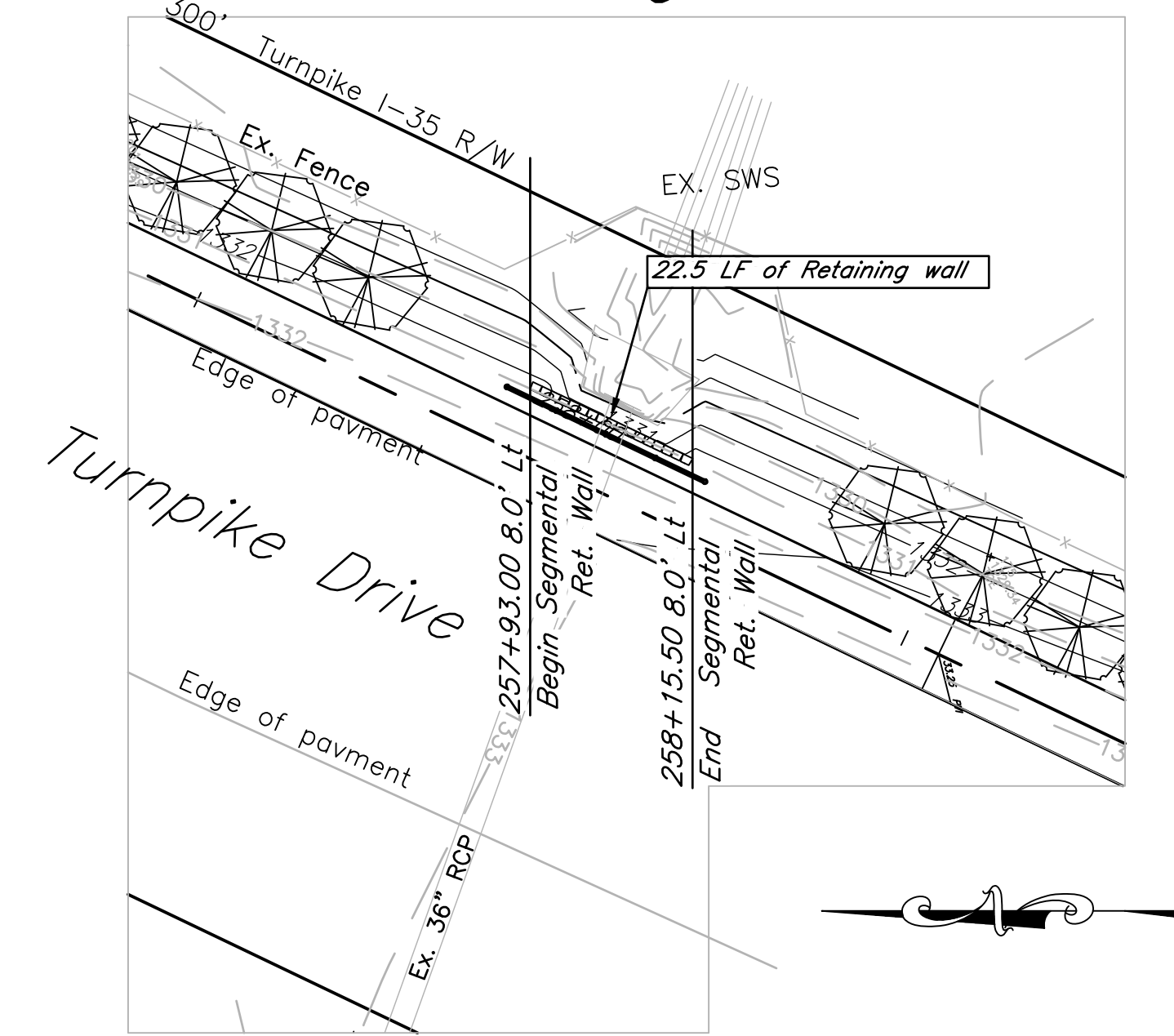
Contractor shall submit engineered wall drawings and details for specific segmental retaining wall that will be used in this situation. Details will include reinforcing, drainage, and color sample(earthtone) and needs to be designed, signed and sealed by a licensed engineer in State of Kansas.

Contractor shall backfill the retaining wall with adequate material.

Retaining Wall



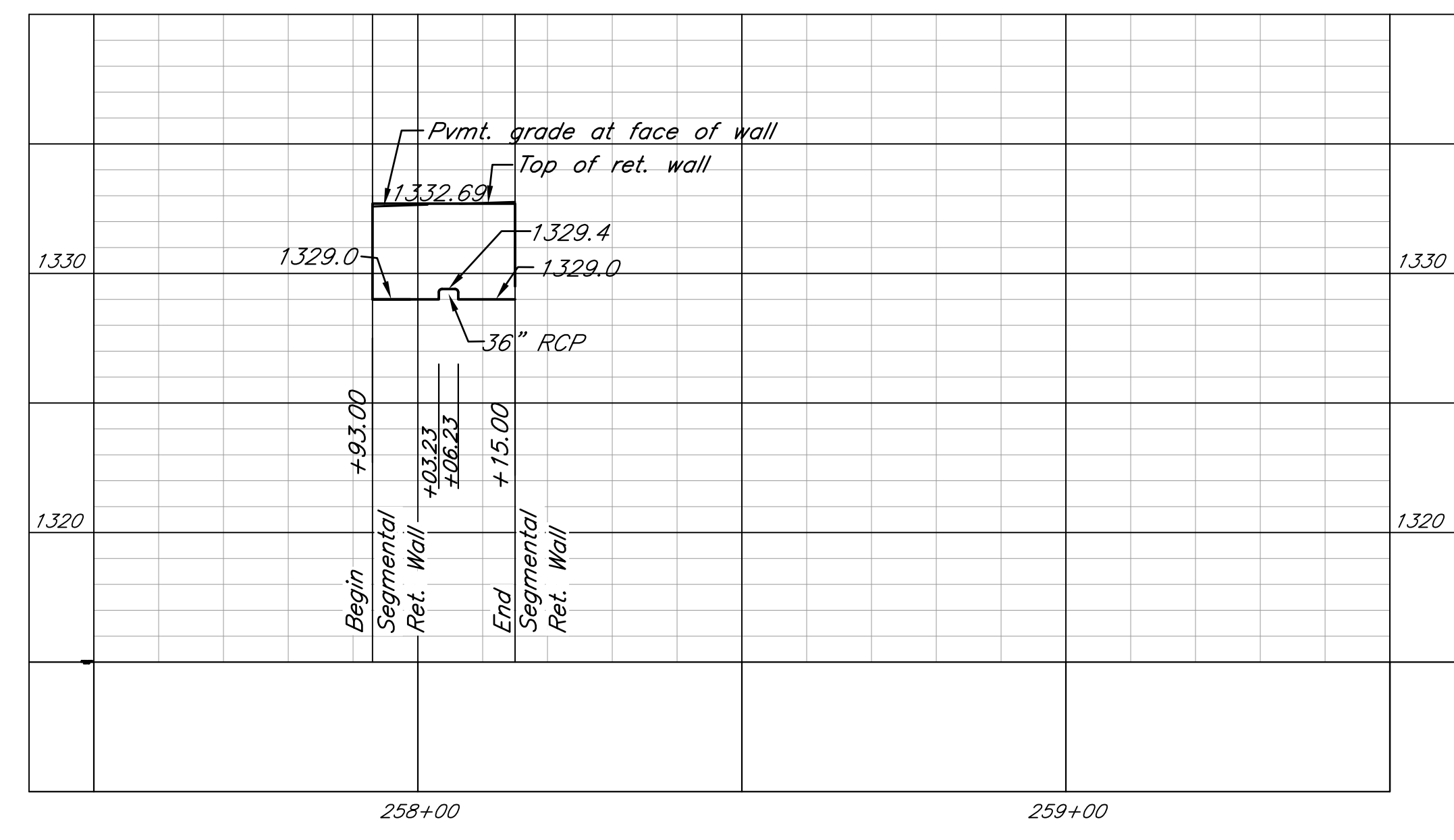
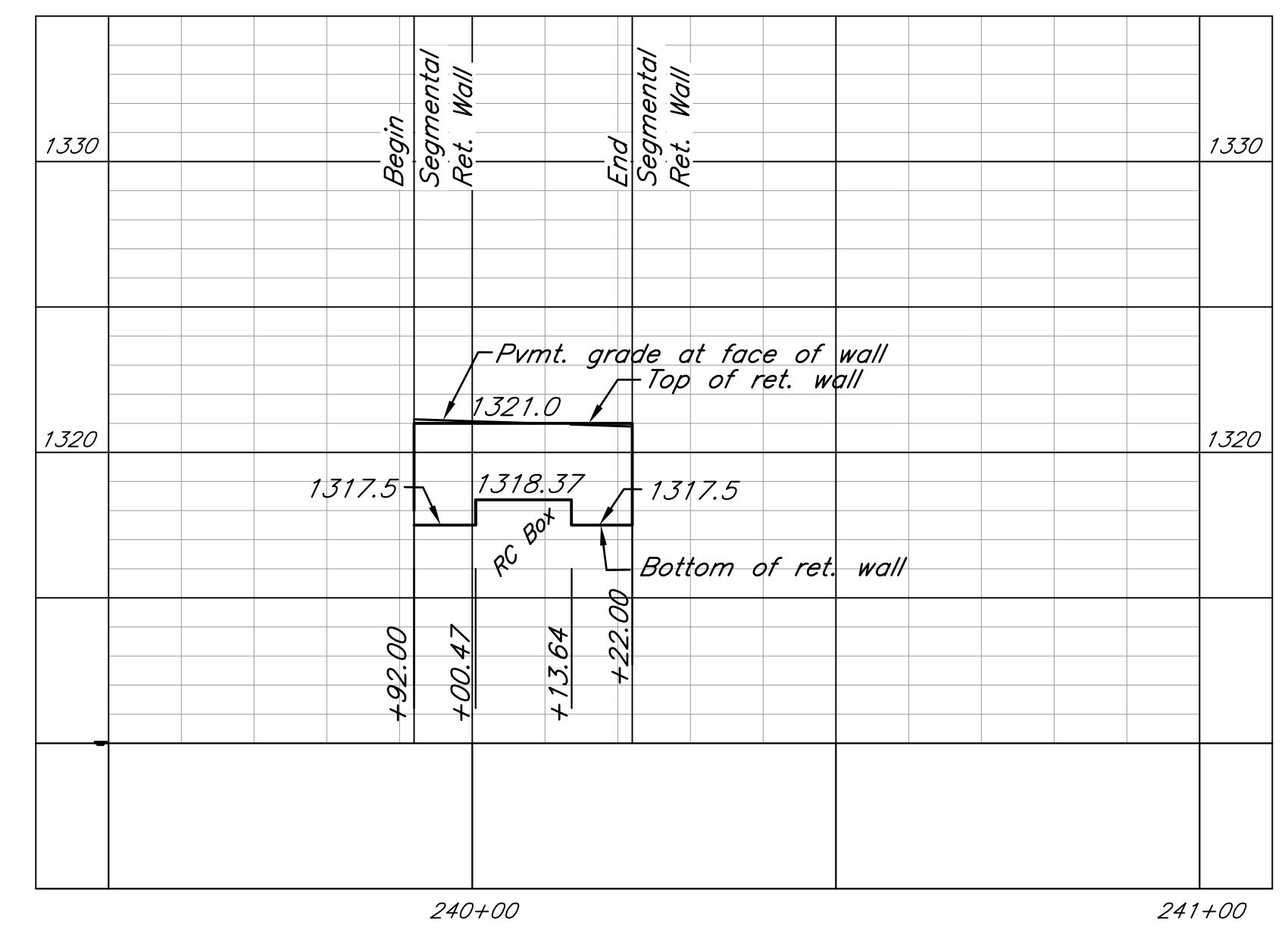
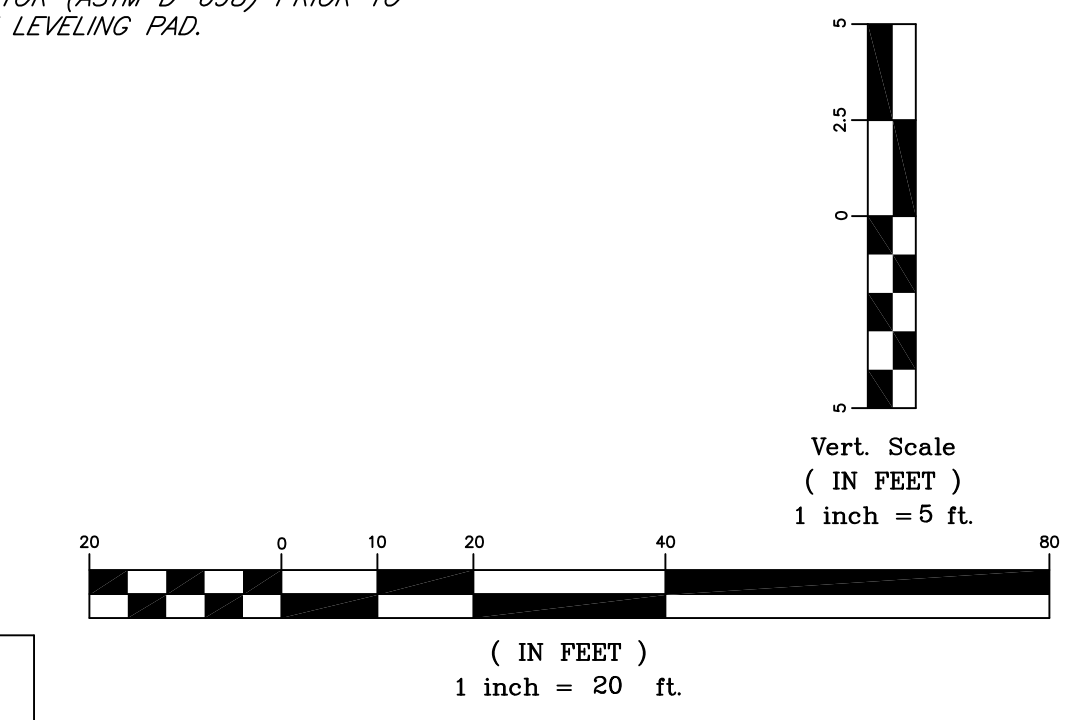
Retaining Wall



BASE LEVELING PAD NOTES

THE LEVELING PAD IS TO BE CONSTRUCTED OF CITY OF WICHITA TYPE 1 ROCK.

THE BASE FOUNDATION SHALL BE COMPACTED TO 90% OF STANDARD PROCTOR (ASTM D-698) PRIOR TO PLACEMENT OF THE LEVELING PAD.



City of Wichita Bike Path Expansion
Retaining wall profile
 Wichita, Kansas
 PROJECT NUMBER: 472-84932
 OCA# 707030

KEM NO.	FILE
05168	retaining
DESIGN	DRAWN
KM	CP
DATE	REVISED
08/2011	