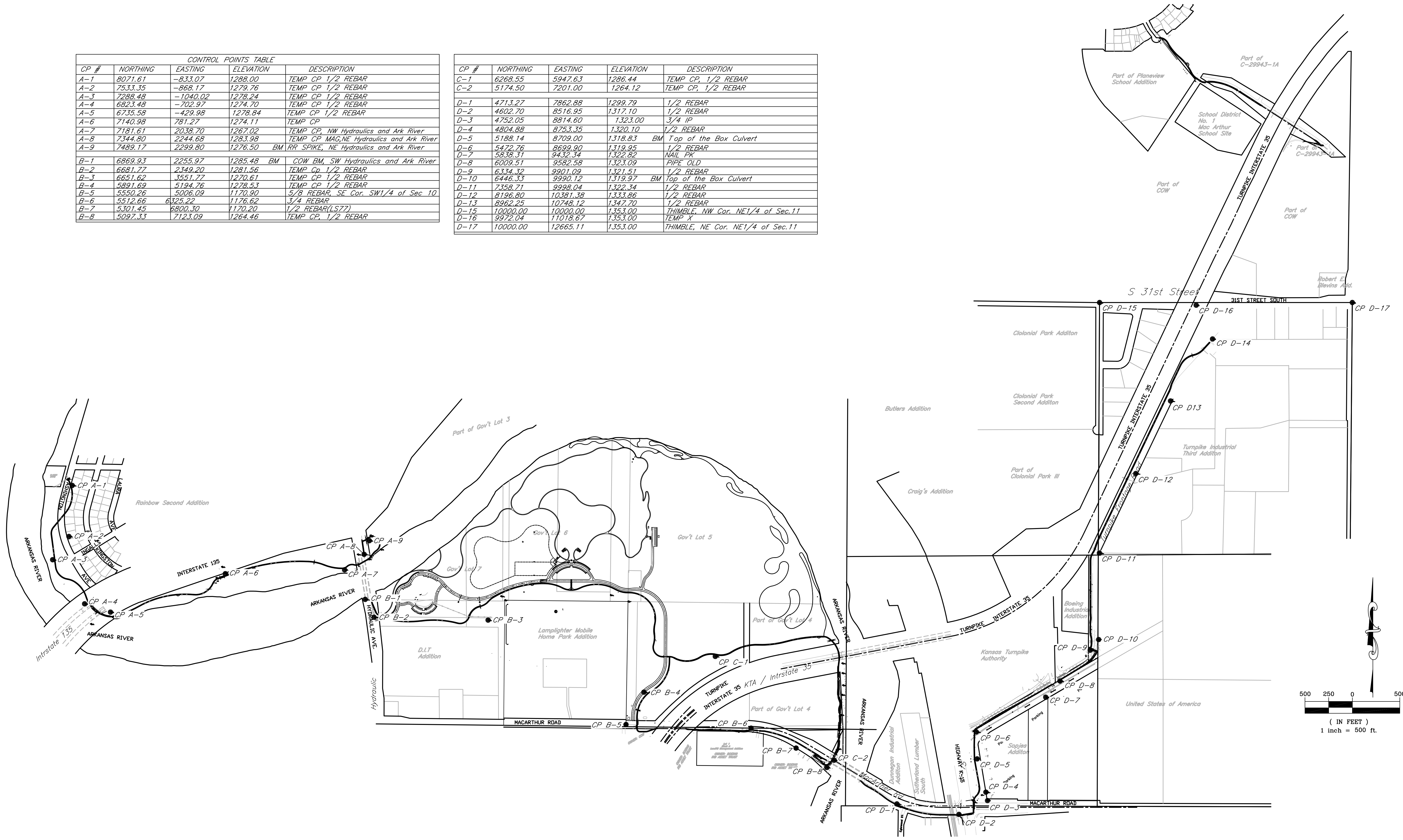



FHWA REG. NO.	STATE	PROJECT NO.:	YEAR	SHEET NUMBER	TOTAL SHEETS
7	KANSAS	0282-01	2011	97	112

CONTROL POINTS TABLE				
CP #	NORTHING	EASTING	ELEVATION	DESCRIPTION
A-1	8071.61	-833.07	1288.00	TEMP CP 1/2 REBAR
A-2	7533.35	-868.17	1279.76	TEMP CP 1/2 REBAR
A-3	7288.48	-1040.02	1278.24	TEMP CP 1/2 REBAR
A-4	6823.48	-702.97	1274.70	TEMP CP 1/2 REBAR
A-5	6735.58	-429.98	1278.84	TEMP CP 1/2 REBAR
A-6	7140.98	781.27	1274.11	TEMP CP
A-7	7181.61	2038.70	1267.02	TEMP CP, NW Hydraulics and Ark River
A-8	7344.80	2244.68	1283.98	TEMP CP MAG, NE Hydraulics and Ark River
A-9	7489.17	2299.80	1276.50	BM RR SPIKE, NE Hydraulics and Ark River
B-1	6869.93	2255.97	1285.48	BM COW BM, SW Hydraulics and Ark River
B-2	6681.77	2349.20	1281.56	TEMP CP 1/2 REBAR
B-3	6651.62	3551.77	1270.61	TEMP CP 1/2 REBAR
B-4	5891.69	5194.76	1278.53	TEMP CP 1/2 REBAR
B-5	5550.26	5006.09	1170.90	5/8 REBAR, SE Cor. SW1/4 of Sec 10
B-6	5512.66	6325.22	1176.62	3/4 REBAR
B-7	5301.45	6800.30	1170.20	1/2 REBAR(LS77)
B-8	5097.33	7123.09	1264.46	TEMP CP, 1/2 REBAR

CP #	NORTHING	EASTING	ELEVATION	DESCRIPTION
C-1	6268.55	5947.63	1286.44	TEMP CP, 1/2 REBAR
C-2	5174.50	7201.00	1264.12	TEMP CP, 1/2 REBAR
D-1	4713.27	7862.88	1299.79	1/2 REBAR
D-2	4602.70	8516.95	1317.10	1/2 REBAR
D-3	4752.05	8814.60	1323.00	3/4 IP
D-4	4804.88	8753.35	1320.10	1/2 REBAR
D-5	5188.14	8709.00	1318.83	BM Top of the Box Culvert
D-6	5472.76	8699.90	1319.95	1/2 REBAR
D-7	5838.31	9432.34	1322.82	NAIL PK
D-8	6009.51	9582.58	1323.09	PIPE OLD
D-9	6334.32	9901.09	1321.51	1/2 REBAR
D-10	6446.33	9990.12	1319.97	BM Top of the Box Culvert
D-11	7358.71	9998.04	1322.34	1/2 REBAR
D-12	8196.80	10381.38	1333.86	1/2 REBAR
D-13	8962.25	10748.12	1347.70	1/2 REBAR
D-15	10000.00	10000.00	1353.00	THIMBLE, NW Cor. NE1/4 of Sec.11
D-16	9972.04	11018.67	1353.00	TEMP X
D-17	10000.00	12665.11	1353.00	THIMBLE, NE Cor. NE1/4 of Sec.11




 516 S. Market,
 Wichita, KS 67202
 316/264-0242

City of Wichita Bike Path Expansion
Control Points
 Wichita, Kansas
 PROJECT NUMBER
 472-84932
 OCA# 707030

KEM NO. 05168	FILE CP
DESIGN KM	DRAWN CP
DATE 08/2011	REVISED

SHEET
97
 OF
112