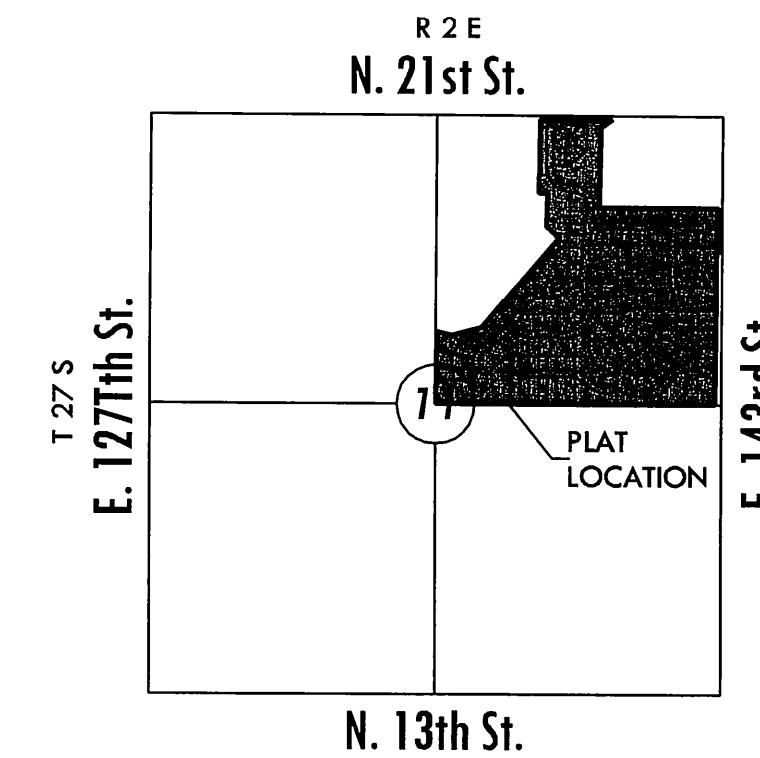


STORM WATER SEWER #629
TO SERVE
KRUG SOUTH ADDITION
PROJECT NO. 468-84326

THE CITY OF WICHITA, KANSAS
JAMES L. ARMOUR, CITY ENGINEER

OCA NO. 751505



VICINITY MAP

GENERAL NOTES

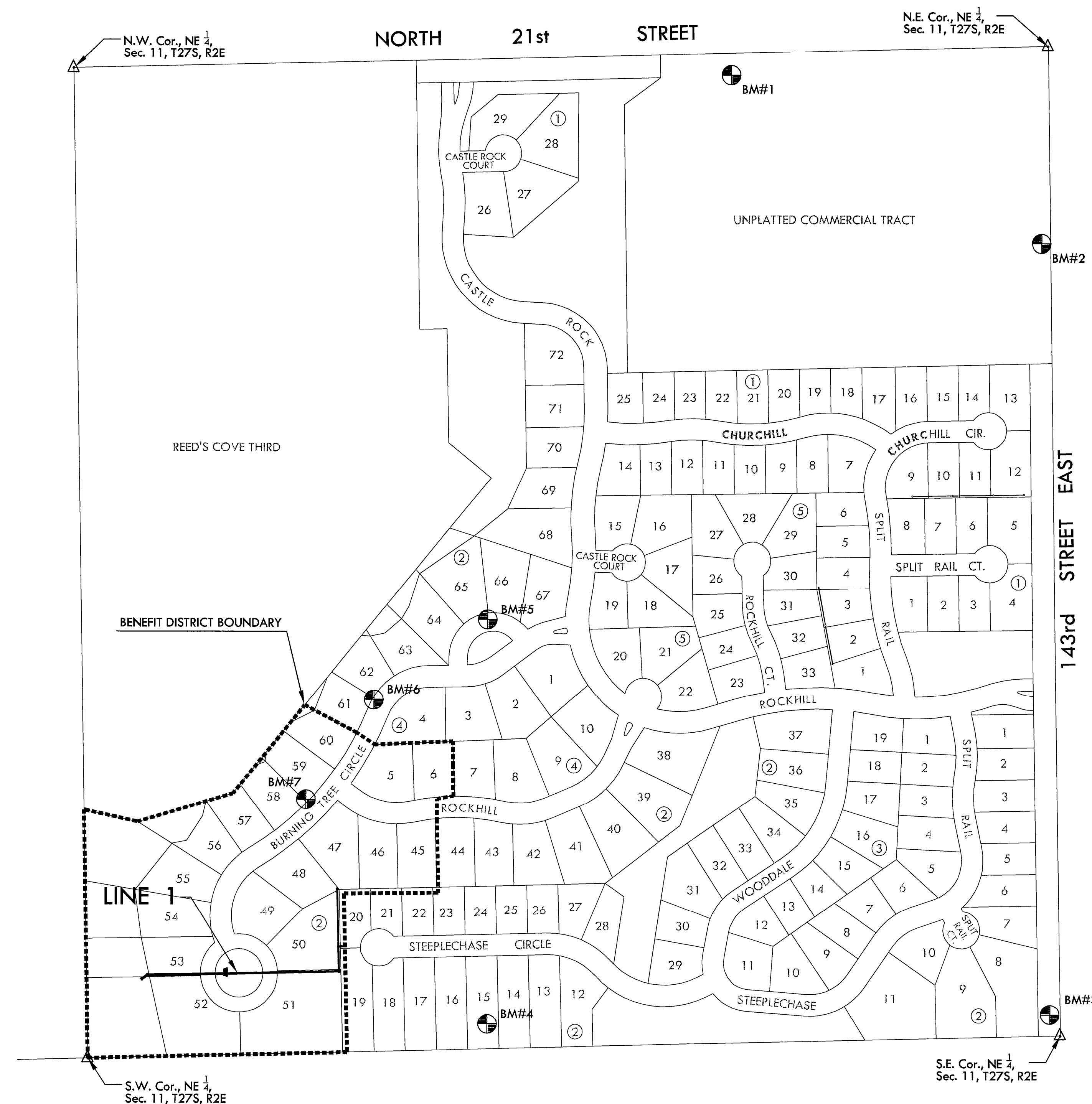
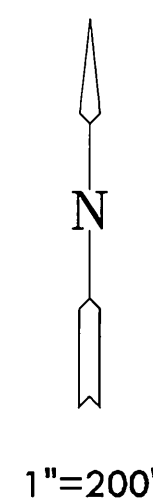
- UNLESS SHOWN OR OTHERWISE STATED ON THESE DRAWINGS, MATERIALS AND CONSTRUCTION SHALL BE IN ACCORDANCE WITH THE CITY OF WICHITA STANDARD SPECIFICATIONS.
- THE TOPS OF INLETS AND MANHOLES AS NOTED ON THE PLANS MAY VARY SO AS TO MEET PROPOSED TOP OF CURB ELEVATIONS OR PAVEMENT ELEVATIONS. THE FIELD ENGINEER SHALL LOCATE INLETS AND MANHOLES WITH REFERENCE TO PROPOSED PAVING PLANS OF THE PERTINENT STREETS.
- ALL CONCRETE SHALL BE STANDARD PAVING MIX UNLESS OTHERWISE NOTED.
- THE CONTRACTOR SHALL BE RESPONSIBLE FOR PRESERVING PROPERTY IRONS. THE CONTRACTOR SHALL BE REQUIRED TO RE-ESTABLISH ANY PROPERTY IRONS WHICH ARE DAMAGED OR DESTROYED BY HIS CONSTRUCTION OPERATIONS. SUCH IRONS SHALL BE RE-ESTABLISHED BY A LICENSED LAND SURVEYOR IN ACCORDANCE WITH STATE LAWS.
- TREES TO BE REMOVED ARE MARKED . ALL TREES WHICH IN THE OPINION OF THE FIELD ENGINEER CAN BE SAVED, SHALL BE SAVED.
- CONTRACTOR SHALL NOTIFY UTILITY COMPANIES OF CONSTRUCTION SCHEDULING.
- EXISTING UTILITIES AND THEIR LOCATIONS, AS SHOWN ON THE PLANS REPRESENT THE BEST INFORMATION OBTAINABLE FOR DESIGN. LOCATION INFORMATION HAS BEEN OBTAINED FROM THE VARIOUS COMPANIES AND IS EITHER FROM COMPANY UTILITY DRAWINGS OR COMPANY PROVIDED FIELD LOCATIONS. THE PLAN LOCATIONS SHOWN ARE NOT GUARANTEED. ADDITIONAL EXISTING UTILITIES MAY ALSO BE ENCOUNTERED.
- CONTRACTOR WILL BE REQUIRED TO PROVIDE A MINIMUM ADVANCE NOTICE OF SEVENTY-TWO (72) HOURS TO UTILITY COMPANIES TO STARTING ANY EXCAVATION AS FOLLOWS:

KANSAS ONE-CALL 800-344-7233
OR 687-2470 (LOCAL WICHITA)

THE CONTRACTOR MUST NOTIFY THE FOLLOWING IN CASE OF EMERGENCY:

COX COMMUNICATIONS (CABLE)	262-0661
WESTAR (ELECTRIC)	261-6512
KANSAS GAS SERVICE (GAS)	832-3101
SBC (TELEPHONE)	800-870-8390
CITY OF WICHITA WATER & SEWER	262-6000
BLACK HILLS ENERGY (GAS)	800-303-0357

- RUBBLE FROM THE REMOVAL OF MISCELLANEOUS STRUCTURES AND EXCESS EXCAVATION WHICH IS TO BE WASTED SHALL BE DISPOSED OF ON SITES TO BE PROVIDED BY THE CONTRACTOR. THESE SITES SHALL BE APPROVED BY THE ENGINEER AS TO SUITABILITY, APPEARANCE AND SITE LOCATION. LOCATIONS THAT, IN THE OPINION OF THE ENGINEER, WILL LEAVE AN UNSIGHTLY APPEARANCE WILL NOT BE APPROVED. ALL DISPOSAL SITES MUST BE APPROVED BY THE KANSAS DEPARTMENT OF HEALTH AND ENVIRONMENT. MATERIAL EITHER STOCKPILED OR DISPOSED OF IN A FLOOD PLAIN WOULD REQUIRE A KANSAS STATE BOARD OF AGRICULTURE PERMIT. ANY MATERIAL DUMPED IN WATERS OF THE UNITED STATES OR WETLANDS IS SUBJECT TO U.S. CORPS OF ENGINEERS PERMITTING REGULATIONS. ANY MATERIAL BURIED OR STOCKPILED BEYOND APPROVED CONSTRUCTION LIMITS WOULD REQUIRE ADDITIONAL ARCHAEOLOGICAL INVESTIGATIONS UNLESS BURIED IN A PREVIOUSLY APPROVED BORROW LOCATION.
- CONTRACTOR SHALL RESEED AND MULCH ALL DISTURBED AREAS. COST SHALL BE CONSIDERED SUBSIDIARY TO SITE RESTORATION.
- DEVELOPER FOR THIS PROJECT IS:
KRUG SOUTH RESIDENTIAL, LLC
RITCHIE DEVELOPMENT CORPORATION
8100 E. 22nd ST. BLDG. 1000
WICHITA, KANSAS, 67226
CONTACT: TERRY D. RHEA, VICE PRESIDENT
316-684-7300



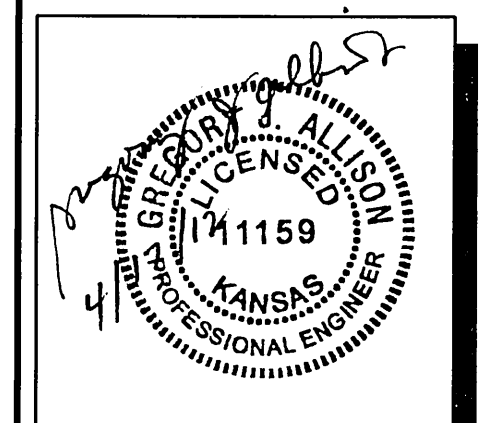
INDEX TO DRAWINGS

SHEET NO.	DESCRIPTION
1	TITLE SHEET
2-4	DETAILS
5-6	LINE 1
7	BUBBLE MAP
8	EROSION CONTROL
9-13	BMP DETAILS
14	DRAINAGE PLAN
15-17	PLAT

BENCHMARKS

- Datum BM at NE corner of inlet on S. side of Williamgate over bridge in Hawthorne Addition.
Elev. = 1355.74 (NGVD 29)
- BM#1 RR spike in S. face of PP, 3rd PP W. of 143rd St. (799' from CL) S. side of 21st St. (49' from CL)
Elev. = 1362.17 (NGVD 29)
- BM#2 FH NE bolt w/ tag on top of flange, W. side of 143rd St. NW of drive. (23' from CL)
Elev. = 1382.81 (NGVD 29)
- BM#3 RR spike in N. face of HLP in N. pole, the first HLP w. of E. 143rd St.
Elev. = 1370.25 (NGVD 29)
- BM#4 RR spike in N. face of HLP in N. pole, the third HLP west of E. 143rd St.
Elev. = 1358.43 (NGVD 29)
- BM#5 BM Chiseled square on top of curb between Lots 65 and 66, Block 2.
Elev. = 1358.93 NGVD 29
- BM#6 BM Chiseled square on top of curb between Lots 62 and 63, Block 2.
Elev. = 1354.11 NGVD 29
- BM#7 TBM Chiseled "+" on north rim of sanitary sewer manhole 187' southwest of south end of existing pavement on Burning Tree, 9.7' north of "south" corner of Lot 59, Block 2.
Elev. = 1354.96 NGVD 29

MKEC
ENGINEERING
CONSULTANTS, INC.
411 N. WEBB ROAD
WICHITA, KS. 67206
316-684-9600



STORM WATER SEWER #629
KRUG SOUTH ADDITION
PHASE 2

TITLE SHEET
SHEET TITLE
468-84326
PROJECT NUMBER

DFL | KKL | GJA
DESIGNED | DRAWN | CHECKED

ISSUED
April 2012

REVISED

SHEET NO.
1 of 17

PLOTTED: Tuesday, April 17, 2012 @ 02:25PM

J:\CIVIL\052911.DWG\SWS\PH2_052911.DT.DWG