

LOCATION MAP  
No Scale

**GENERAL NOTES:**

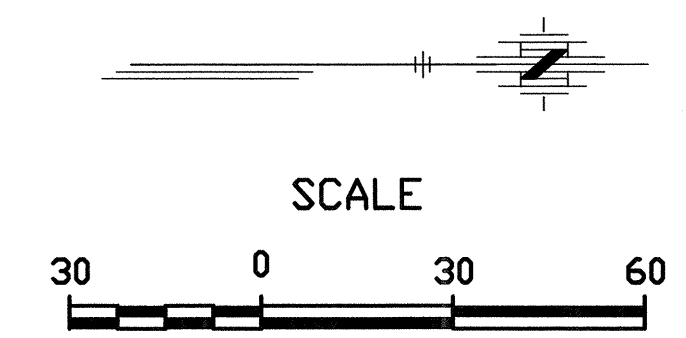
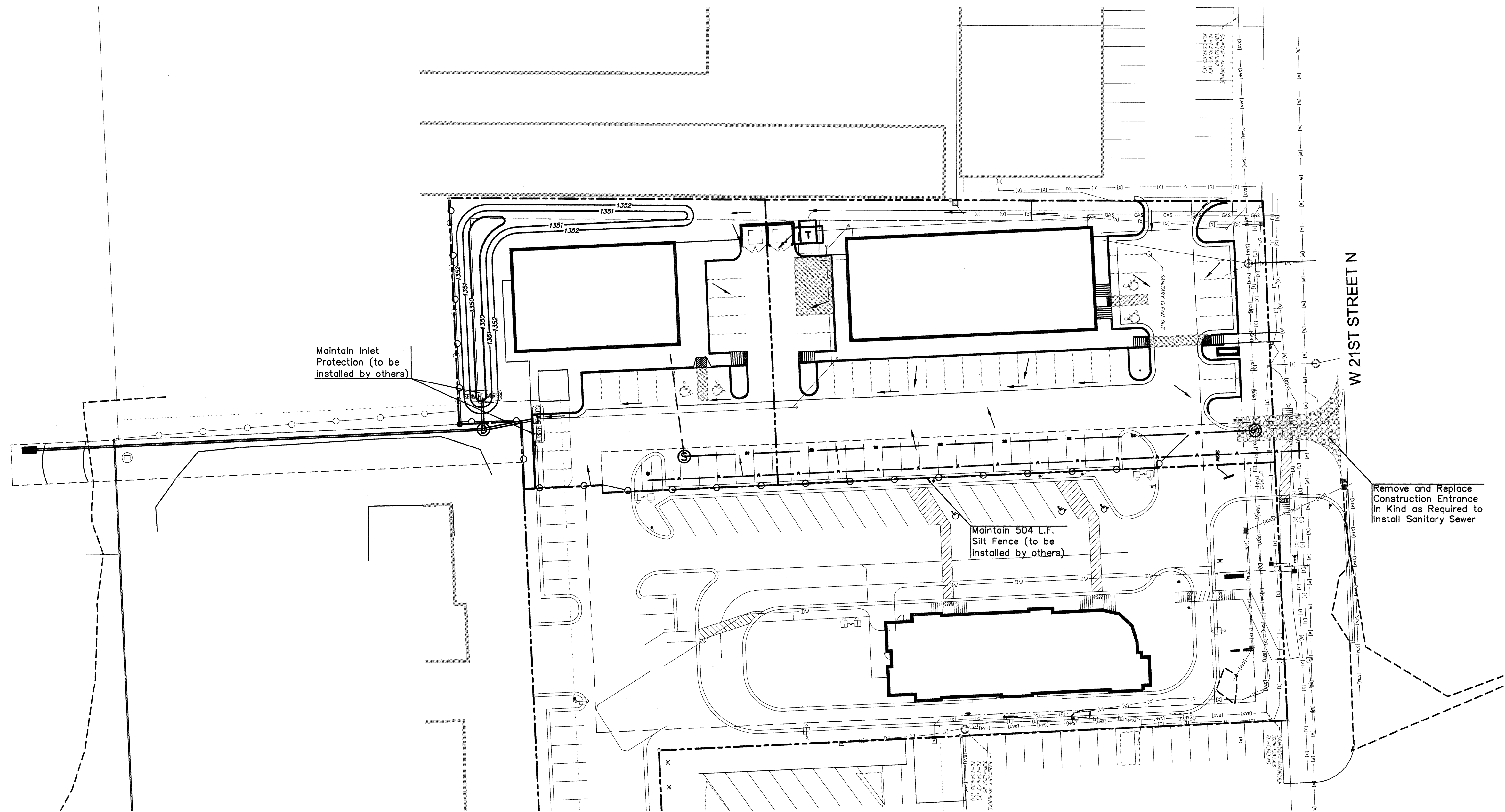
- Erosion Control Notes:**
- All areas disturbed by construction shall be seeded as directed by the owner immediately following construction in that area.
  - Contractor shall implement "Best Management Practices" in accordance with the Storm Water Pollution prevention plan to minimize sedimentation loss due to stormwater and wind erosion. Contractor shall obtain a copy from the civil engineer.
  - Contractor shall adjust the plan as necessary to accommodate construction phasing and sequencing.
  - Contractor shall install and maintain soil erosion control measures (BMP's) in accordance with City of Wichita ordinances.
  - The soil erosion BMP'S must be in place at all times during construction until such time as the site is re-established with paving or grass.
  - Failure to install, protect, and maintain BMP's are violations of City Ordinance 1285 and will subject the contractor to the penalties provided therein. Included with your permit is an orange "notice" sign that must be posted on-site in a conspicuous place at all times during construction. This sign is provided to assist you in the maintenance of BMP's.
  - Back of Curb Protection: Can include hay bale, silt fence, or Curlex barrier, as shown on City BMP standard details. This BMP must remain in place until the area between the curb and right-of-way line has been permanently stabilized.
  - The General Contractor is responsible for the design, installation and maintenance of all BMP's as necessary to prohibit erosion.
  - Any mud inadvertently tracked onto any street will be cleaned up by the general contractor at the end of each day's work.

**LEGAL DESCRIPTION:**

A portion of Lot 4, Block 1, Pearson Farms 3rd Addition, to Wichita, Sedgwick County, Kansas.

**BENCHMARKS:**

1. "T" cut on caisson for light standard.  
Elev.=1354.52
2. "T" cut on concrete pad under transformer.  
Elev.=1353.42



**LEGEND**

- SEDIMENT BARRIER Sediment Barriers
- Silt Fence
- Stabilized Construction Entrance

PEARSON FARMS 3RD ADDITION  
WATER DISTRIBUTION PLAN  
EROSION CONTROL PLAN  
CITY OF WICHITA, KANSAS  
JAMES L. ARMOUR, P.E. - CITY ENGINEER  
C.O.W. PROJ. NO. 448-90549 OCA 607861

POE & ASSOCIATES, INC.  
CONSULTING ENGINEERS  
5940 E. Central, Suite 200 Wichita, KS  
67208-4242  
Phone 316/685-4114 FAX 316/685-4444



**FINAL**  
Engineer: S. SERVIS  
Designer: S. SERVIS  
Drawing: P:\101994\101994.grading.dwg  
Date: 4/9/2012