

FINAL PLAT

KRUG SOUTH ADDITION

AN ADDITION TO WICHITA, SEDGWICK COUNTY, KANSAS

LINE	LENGTH	BEARING
L1	218.52'	N12°28'30"W
L2	107.16'	N12°28'30"W
L3	130.23'	N07°28'42"W
L4	159.23'	S39°07'41"W
L5	40.00'	N80°18'03"E
L6	80.00'	N33°05'39"E
L7	40.37'	N13°28'00"E
L8	27.99'	N71°45'50"E
L9	20.41'	N07°32'55"W
L10	72.63'	S63°19'03"W
L11	93.04'	S21°07'37"W
L12	23.42'	S86°19'48"E
L13	41.15'	N77°41'34"E
L14	59.42'	N49°35'40"E
L15	40.00'	N30°39'25"E
L16	91.60'	N17°48'12"E
L17	178.55'	S55°32'53"W

LOTS (inclusive)	BLOCK	ELEVATION NGVD
52, 53, 54	2	1344.7
55	2	1344.9
56 & 57	2	1347.0
58, 59, 60	2	1348.0
61	2	1348.9
62 & 63	2	1350.7
64, 65, 66	2	1354.2
68	2	1358.3
69	2	1359.0
70	2	1359.2

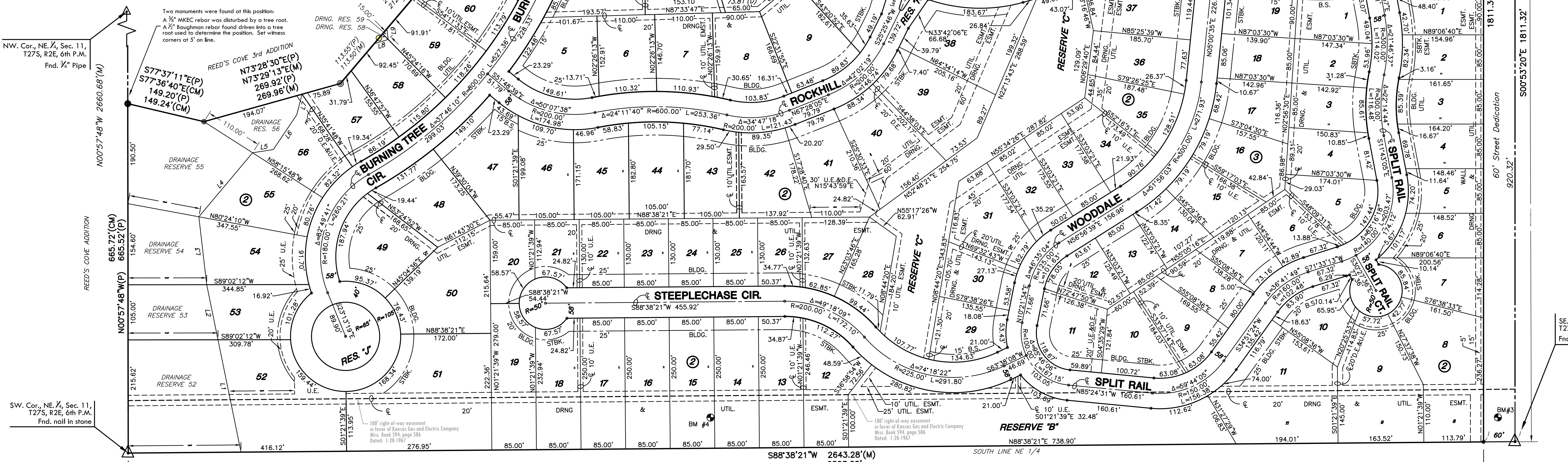
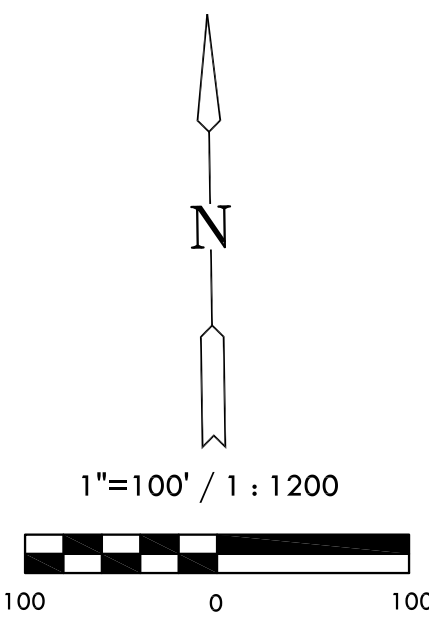
LEGEND

Date of Survey: September, 2007

- △ = Section Corner Monument Found
- ⊙ = Found 3/8" Rebar w/ MKEC CLS 39 id. cap
- = Set 3/8" Rebar w/ MKEC CLS 39 id. cap
- = Found 1/2" Rebar w/ Baughman id. cap
- (M) = Measured
- (CM) = Calculated from measured
- (P) = Platted
- (D) = Deeded or Described

BENCH MARKS

- Datum BM: △ at NE corner of inlet on S. side of Williamsgate over bridge in Hawthorne Addition. Elev. = 1355.74 (NGVD 29)
- BM#3: RR spike in N. face of HLP in N. pole, the first HLP w. of E. 143rd St. Elev. = 1370.25 (NGVD 29)
- BM#4: RR spike in N. face of HLP in N. pole, the third HLP west of E. 143rd St. Elev. = 1358.43 (NGVD 29)



NW. Cor., NE 1/4, Sec. 11, T27S, R2E, 6th P.M. Fnd. 3/4" Pipe

SW. Cor., NE 1/4, Sec. 11, T27S, R2E, 6th P.M. Fnd. nail in stone

NE. Cor., NE 1/4, Sec. 11, T27S, R2E, 6th P.M. Fnd. 3/4" w/ cap

SE. Cor., NE 1/4, Sec. 11, T27S, R2E, 6th P.M. Fnd. 3/4" w/ PEC cap