



01/30/2012

REVISIONS

- PC1 12/20/11
- PC2 01/30/12

WD PROJECT: BJSB0167
PERMIT ISSUE DATE: 11/17/11
HEALTH SUBMITTAL:
BID ISSUE DATE: 12/19/11
CONSTRUCTION SET:

C2.2 STORM SEWER PLAN

PLAN NOTES

1. PROPOSED 6" ROOF DRAIN LINES SHALL BE INSTALLED AT A MINIMUM OF 1.0% SLOPE. INVERT ELEVATIONS PROVIDED AT EXISTING CATCH BASINS ARE SHOWN AT THE MAXIMUM DEPTH POSSIBLE. INVERTS MAY BE ELEVATED IN THE FIELD IF NECESSARY.
2. ALL PROPOSED STORM PIPING SHALL BE HIGH DENSITY POLYETHYLENE OR APPROVED EQUAL.
3. CONTRACTOR SHALL REFER TO PLUMBING PLANS FOR SPECIFICATIONS ON PROPOSED TRENCH DRAINS.
4. PROPOSED WATER QUALITY UNIT SHALL BE CONTECH CDS UNIT AS SPECIFIED ON SHEET C2.3 OR APPROVED EQUAL.

GRADING LEGEND

- PROPOSED CONTOUR
- 6" PVC DRAIN LINE TO EXISTING STORM SYSTEM. SLOPE ALL PIPES 1% MIN
- 10" AREA DRAIN TO BE NYOPLAST IN-LINE DRAIN WITH DOMED GRATE (OR APPROVED EQUAL)
- MATCH EXISTING ELEVATION (TYP.)

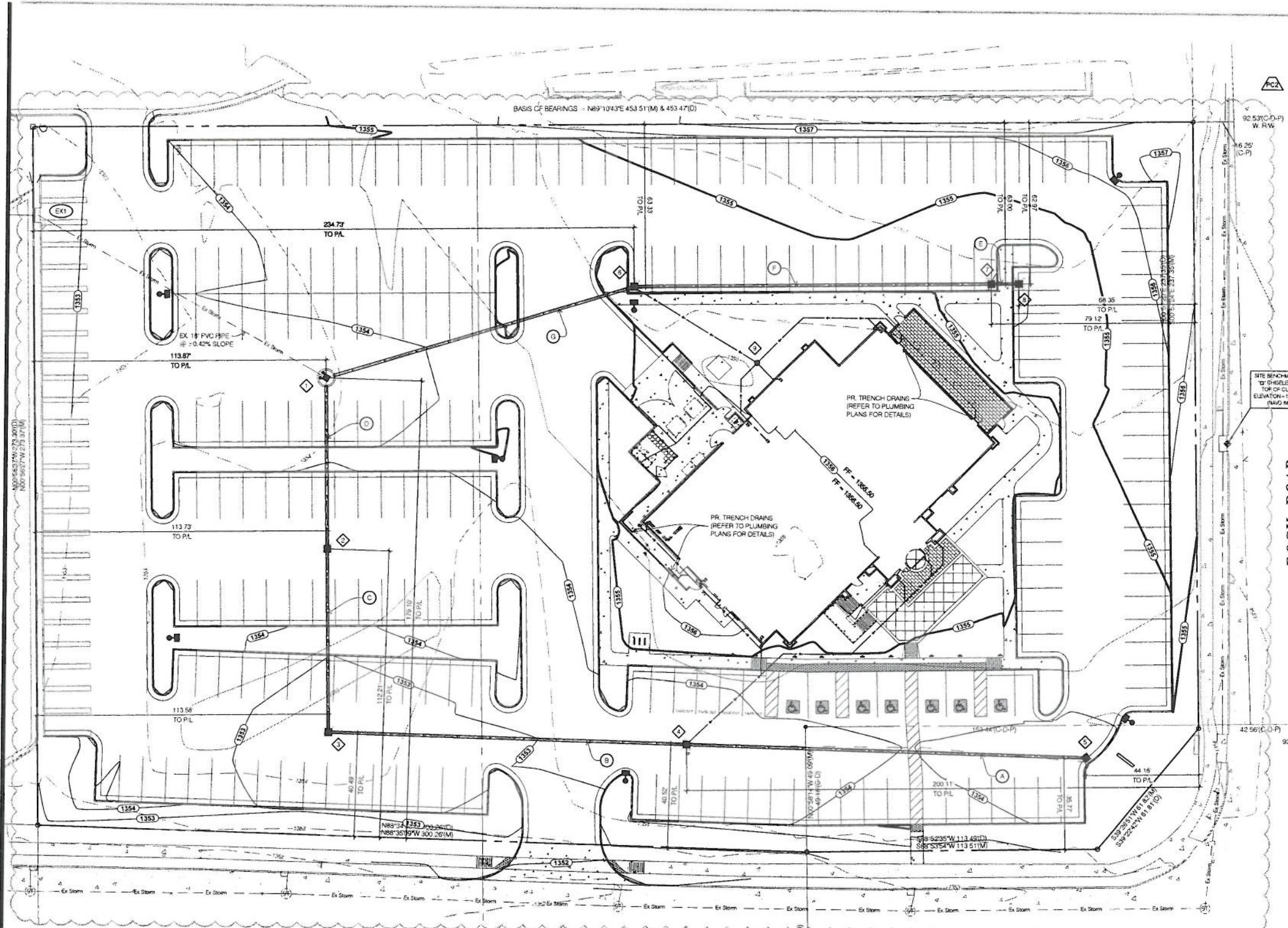
STORM STRUCTURE SCHEDULE

- PR. CONTECH CDS WATER QUALITY UNIT (PER DETAIL ON SHEET C2.3)
GRATE = 1353.33
15' INV. IN = 1347.70
18' INV. IN = 1347.45
EX. 18" INV. OUT = 1347.45
- PR. CATCH BASIN (PER DETAILS ON SHEET C6)
GRATE = 1353.02
15' INV. IN = 1348.37
18' INV. OUT = 1348.12
- PR. CATCH BASIN (PER DETAILS ON SHEET C6)
GRATE = 1352.24
15' INV. IN = 1349.09
15' INV. OUT = 1349.09
- PR. CATCH BASIN (PER DETAILS ON SHEET C6)
GRATE = 1353.65
12' INV. OUT = 1351.40
- PR. CATCH BASIN (PER DETAILS ON SHEET C6)
GRATE = 1353.91
12' INV. IN = 1351.22
12' INV. OUT = 1351.22
- PR. 10" NYOPLAST AREA DRAIN (W/ DOMED GRATE)
RIM ELEV. = 1355.00
8' INV. IN = 1352.16
8' INV. OUT = 1351.16
- PR. CATCH BASIN (PER DETAILS ON SHEET C6)
GRATE = 1354.35
8' INV. IN = 1350.82
12' INV. IN = 1350.32
15' INV. OUT = 1350.07
- PR. CATCH BASIN (PER DETAILS ON SHEET C6)
GRATE = 1354.35
8' INV. IN = 1350.03
12' INV. IN = 1349.53
15' INV. OUT = 1349.28
- PR. CATCH BASIN (PER DETAILS ON SHEET C6)
GRATE = 1353.85
12' INV. OUT = 1351.35
- EX. CURB INLET
RIM ELEV. = 1351.96
EX. 18" INV. IN = 1346.91
EX. 24" INV. OUT = 1346.06

STORM PIPE SCHEDULE

- A 156 LINEAR FEET OF 12" HOPE AT 0.70% SLOPE
- B 140 LINEAR FEET OF 15" HOPE AT 0.70% SLOPE
- C 72 LINEAR FEET OF 15" HOPE AT 1.00% SLOPE
- D 67 LINEAR FEET OF 18" HOPE AT 1.00% SLOPE
- E 11 LINEAR FEET OF 12" HOPE AT 1.20% SLOPE
- F 140 LINEAR FEET OF 12" HOPE AT 1.20% SLOPE
- G 126 LINEAR FEET OF 15" HOPE AT 1.25% SLOPE

NOTE: DIMENSIONS SHOWN FOR EACH CATCH BASIN ARE TO THE CENTER OF THE STRUCTURE AND PERPENDICULAR TO THE PROPERTY LINE IDENTIFIED.



ROCK ROAD

KELLOGG (U.S. HIGHWAY 54)

AS BUILTS

kemiller engineering

516 S. Market,
Wichita, KS 67202

(316)264-0242

DRAINAGE AREA DATA

TOTAL SITE AREAS	126,540 SQUARE FEET (2.90 ACRES)
EXISTING CONDITIONS OF SITE AREA	
PERVIOUS	61,893 SQUARE FEET (48.7%)
IMPERVIOUS	64,647 SQUARE FEET (51.3%)
PROPOSED CONDITIONS OF SITE AREA	
PERVIOUS	24,061 SQUARE FEET (19.0%)
IMPERVIOUS	102,479 SQUARE FEET (81.0%)

STORMWATER NARRATIVE

EXISTING SITE IS PARCEL 5 OF THE TOWNE EAST SQUARE SHOPPING MALL. THE EXISTING SITE WAS PREVIOUSLY A DEVELOPED RESTAURANT AND HOTEL SITE WHICH IS NOW DEMOLISHED AND VACANT. EXISTING SITE DRAINAGE IS COLLECTED BY A SERIES OF CATCH BASINS WHICH CONVEY STORMWATER TO THE STORM SEWER SYSTEM FOR THE TOWNE EAST SQUARE SHOPPING MALL.

PROPOSED IMPROVEMENTS ARE TO MAINTAIN THE EXISTING DRAINAGE PATTERNS AND CONVEY STORM DRAINAGE TO THE EXISTING STORM SEWER SYSTEM. A PORTION OF THE EXISTING SYSTEM IS PROPOSED TO BE REMOVED TO ALLOW FOR CONSTRUCTION OF THE BJ'S BUILDING. NEW CATCH BASINS ARE TO BE CONSTRUCTED THROUGHOUT THE PROPERTY TO COLLECT RUNOFF AND CONVEY IT TO THE EXISTING 18" STORM SEWER LOCATED IN THE NORTHWEST CORNER OF THE PROPERTY.

CALL BEFORE YOU DIG!
KANSAS LAW REQUIRES NOTIFICATION OF THE UNDERGROUND FACILITY OWNER AT LEAST TWO (2) WORKING DAYS BUT NO MORE THAN FIFTEEN (15) CALENDAR DAYS PRIOR TO EXCAVATION OR DEMOLITION.

Kansas One-Call
www.kansasonecall.com
1-800-DIG-SAFE

