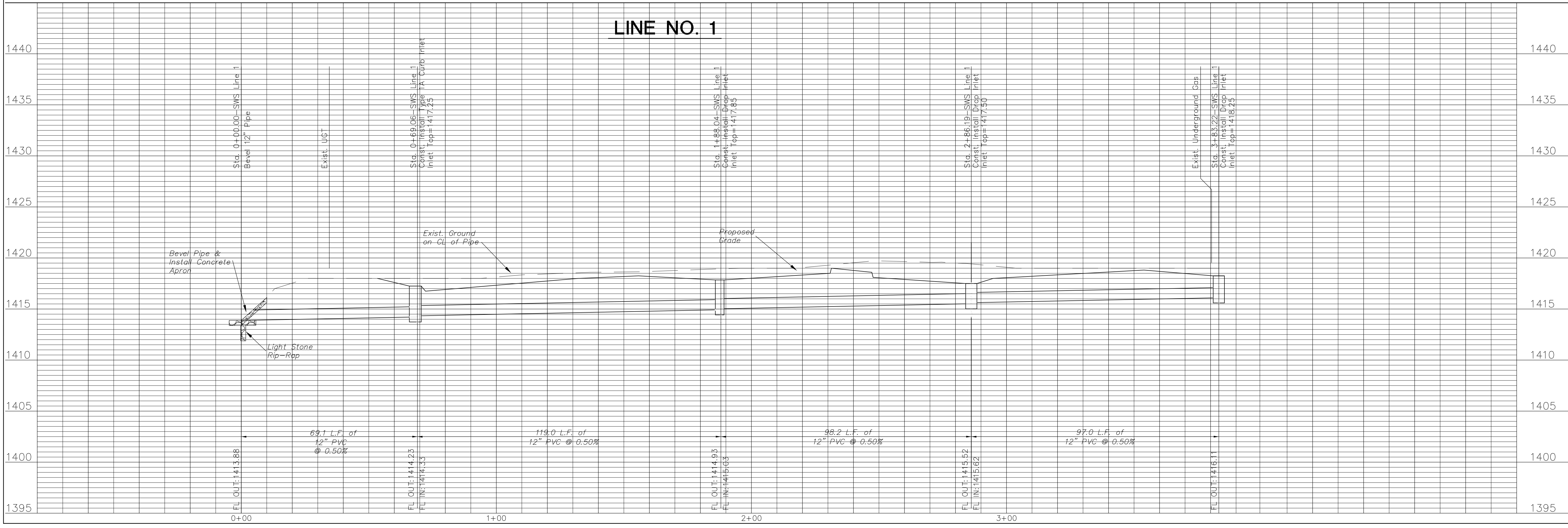
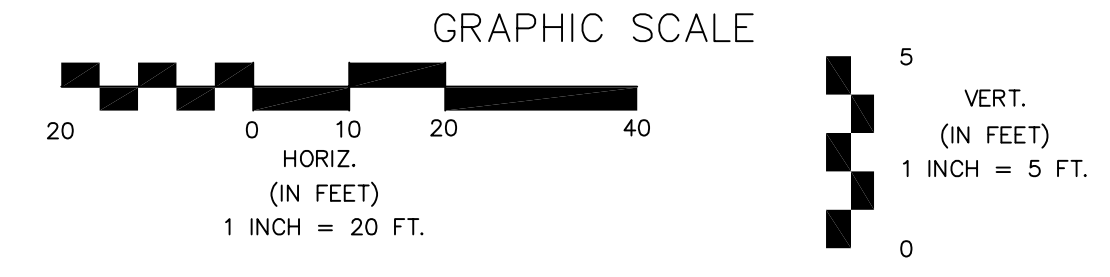


- NOTES:**
- Contractor to Field Verify location and Depth of All Utilities Prior to Construction and Report Findings to Project Engineer.
 - All storm sewer shown on this sheet shall be privately owned and maintained.

Remove Trees Only as Needed for Construction. Cost Shall be Subsidiary to Site Clearing.



By: Approved
Date: Revision

KANSAS GASTROENTEROLOGY
PRIVATE STORM SEWER PLANS
LINE 1 PLAN AND PROFILE
CITY OF WICHITA, KANSAS
JAMES L. ARMOUR, P.E. - CITY ENGINEER
XXXX PPD (XXXXXX)

POE & ASSOCIATES, INC.
CONSULTING ENGINEERS
5940 E. Central, Suite 200 Wichita, KS
67206-0242
Phone 316/685-4114 FAX 316/685-4444

FINAL

Engineer: S. SERVIS
Designer: S. SERVIS
Drawing: P:\1109P\Kansas Gastro\dwg\swsplans-rev.dwg
Date: 3/16/2012

Sheet
2 of 12