

PROJECT SITE

LOCATION MAP  
No Scale

**GENERAL NOTES:**

**Erosion Control Notes:**

1. All areas disturbed by construction shall be seeded as directed by the owner immediately following construction in that area.
2. Contractor shall implement "Best Management Practices" in accordance with the Storm Water Pollution prevention plan to minimize sedimentation loss due to stormwater and wind erosion. Contractor shall obtain a copy from the civil engineer.
3. Contractor shall adjust the plan as necessary to accommodate construction phasing and sequencing.
4. Contractor shall install and maintain soil erosion control measures (BMP's) in accordance with City of Wichita ordinances.
5. The soil erosion BMP's must be in place at all times during construction until such time as the site is re-established with paving or grass.
6. Failure to install, protect, and maintain BMP's are violations of City Ordinance 1285 and will subject the contractor to the penalties provided therein. Included with your permit is an orange "notice" sign that must be posted on-site in a conspicuous place at all times during construction. This sign is provided to assist you in the maintenance of BMP's.
7. Back of Curb Protection: Can include hay bale, silt fence, or Curlex barrier, as shown on City BMP standard details. This BMP must remain in place until the area between the curb and right-of-way line has been permanently stabilized.
8. The General Contractor is responsible for the design, installation and maintenance of all BMP's as necessary to prohibit erosion.
9. Any mud inadvertently tracked onto any street will be cleaned up by the general contractor at the end of each day's work.

**LEGAL DESCRIPTION:**

Lot 9 Block 3, Mediterranean Plaza Addition, to Wichita, Sedgwick County, Kansas.

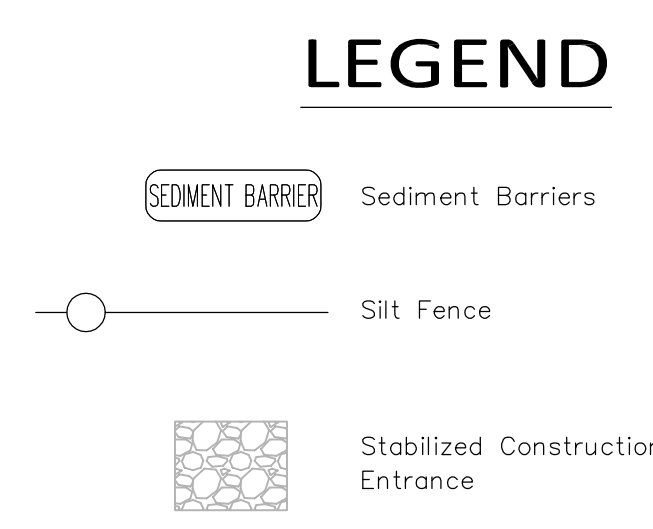
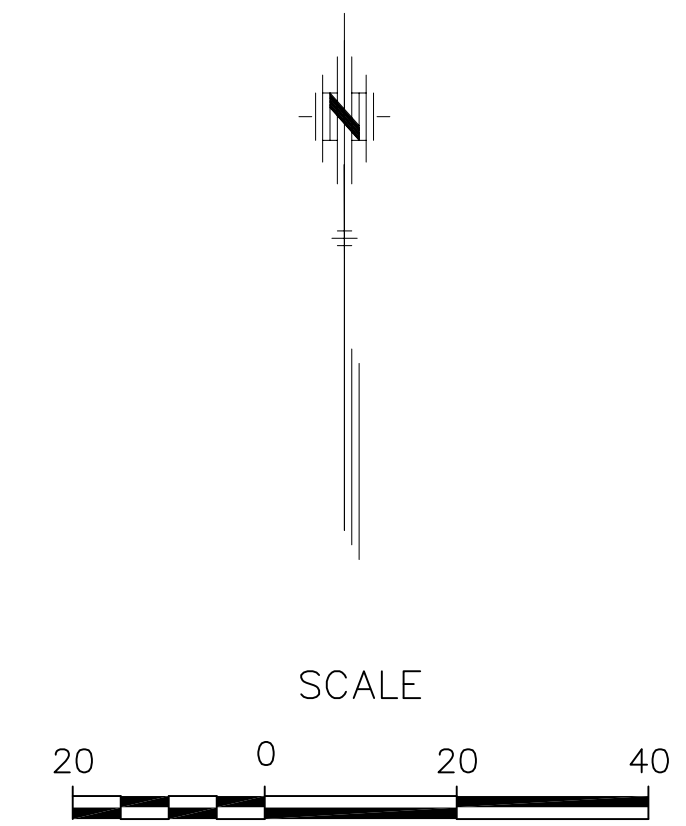
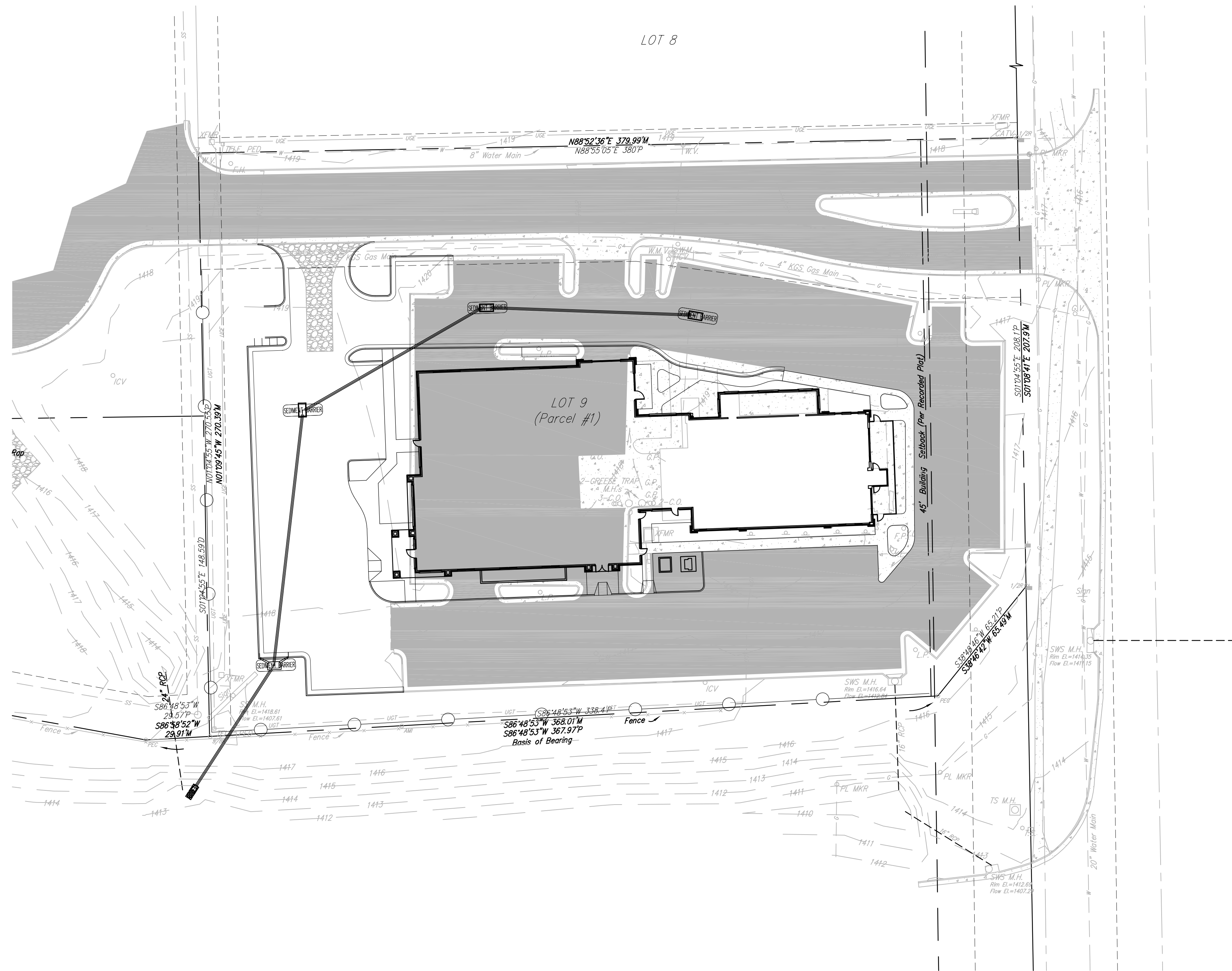
**BENCHMARKS:**

1. "T" cut in top of curb at south curb return 8.0' south and 5.2' east of the northeast property corner of Lot 9, Block 3, Mediterranean Plaza  
Elev.=1417.67 (NAVD88)

**Contacts:**

Surveyor:  
Mark Savoy  
Savoy Company, P.A.  
433 South Hydraulic Street  
Wichita, Kansas 67211  
685-0005

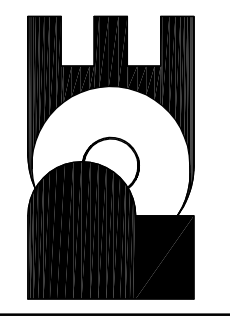
Civil:  
Scott Servis, P.E.  
Poe & Associates, Inc.  
5940 E. Central, Ste 200  
Wichita, Kansas 67208  
685-4114



Inc.	Date	By	Approved	Revision

KANSAS GASTROENTEROLOGY  
EROSION CONTROL  
DETAILS  
CITY OF WICHITA, KANSAS  
JAMES L. ARMOUR, P.E. - CITY ENGINEER  
XXXX PPD (XXXXXX)

POE & ASSOCIATES, INC.  
CONSULTING ENGINEERS  
5940 E. Central, Suite 200 Wichita, KS  
67208-0242  
Phone 316/685-4114 FAX 316/685-4444



Engineer: S. SERVIS  
Designer: S. SERVIS  
Drawing: P:\1109P\Kansas Gastro\dwg\swsplans-rev.dwg  
Date: 3/16/2012