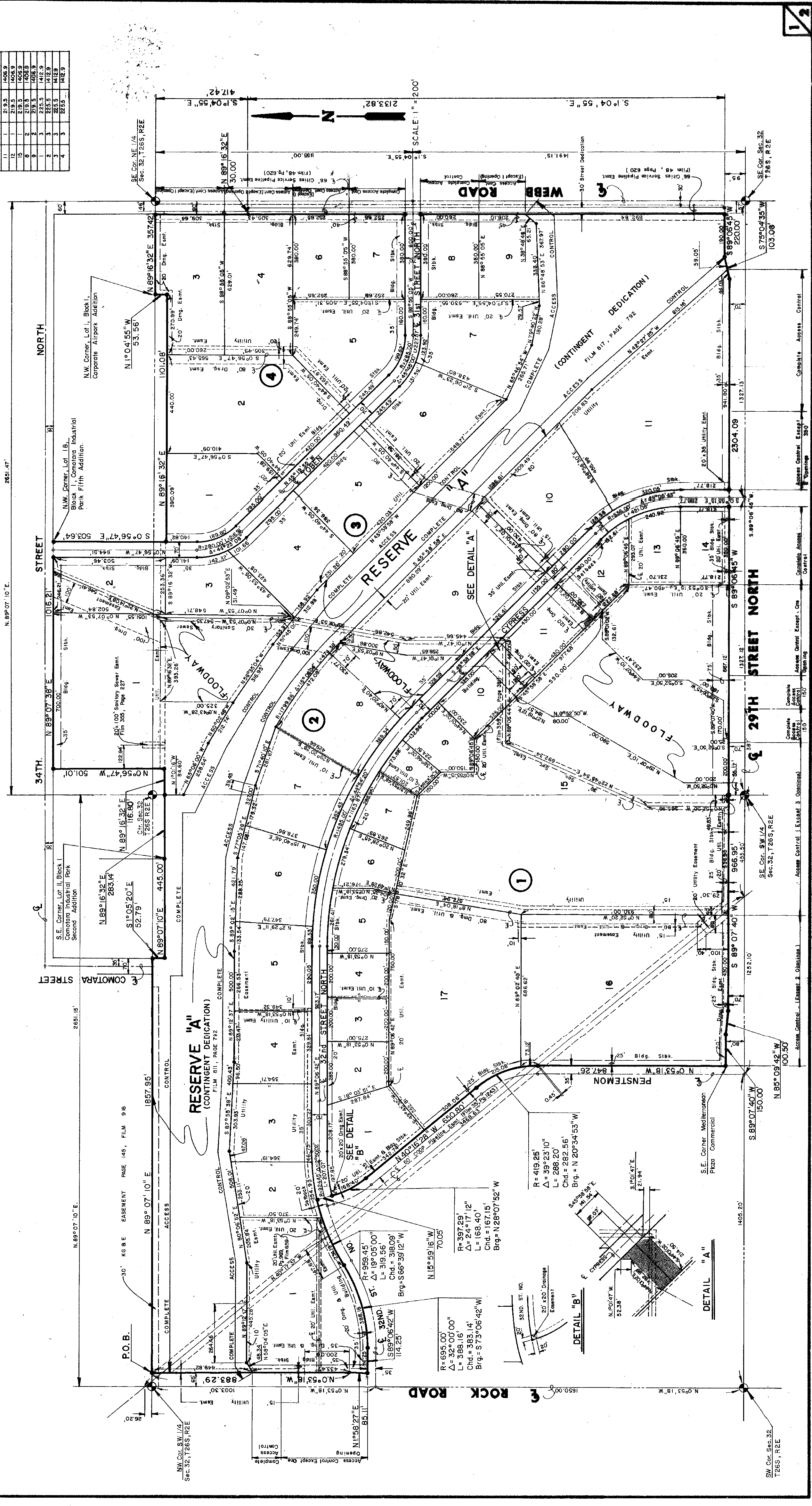


FINAL PLAT OF MEDITERRANEAN PLAZA

AN ADDITION TO WICHITA, SEDGWICK COUNTY, KANSAS

Block No.	Area (City Contain.)	Minimum (U.S.S.F.)	Maximum (U.S.S.F.)
10	218.3	14508.8	
11	218.3	14508.8	
12	218.3	14508.8	
13	218.3	14508.8	
14	218.3	14508.8	
15	218.3	14508.8	
16	218.3	14508.8	
17	218.3	14508.8	
18	218.3	14508.8	
19	218.3	14508.8	
20	218.3	14508.8	



D 6-31 A

D 6-31 A

This digital plat record accurately reproduces in all details the original plat filed with the Sedgwick County Register on December 15, 2011, and is a true and correct copy of the original as recorded in the Sedgwick County Geographic Information Systems.

Bill Meeks, Registered Professional Engineer
State of Kansas, No. 12345