

AS BUILT PLANS

SANITARY SEWER TO SERVE AIR CAPITAL RV RESORT

2129 PPS (607861)

CITY OF WICHITA, KANSAS

Jim Armour, P.E., City Engineer

Release Date: 6/15/2012
: APRosas 6/19/2012

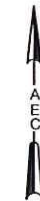
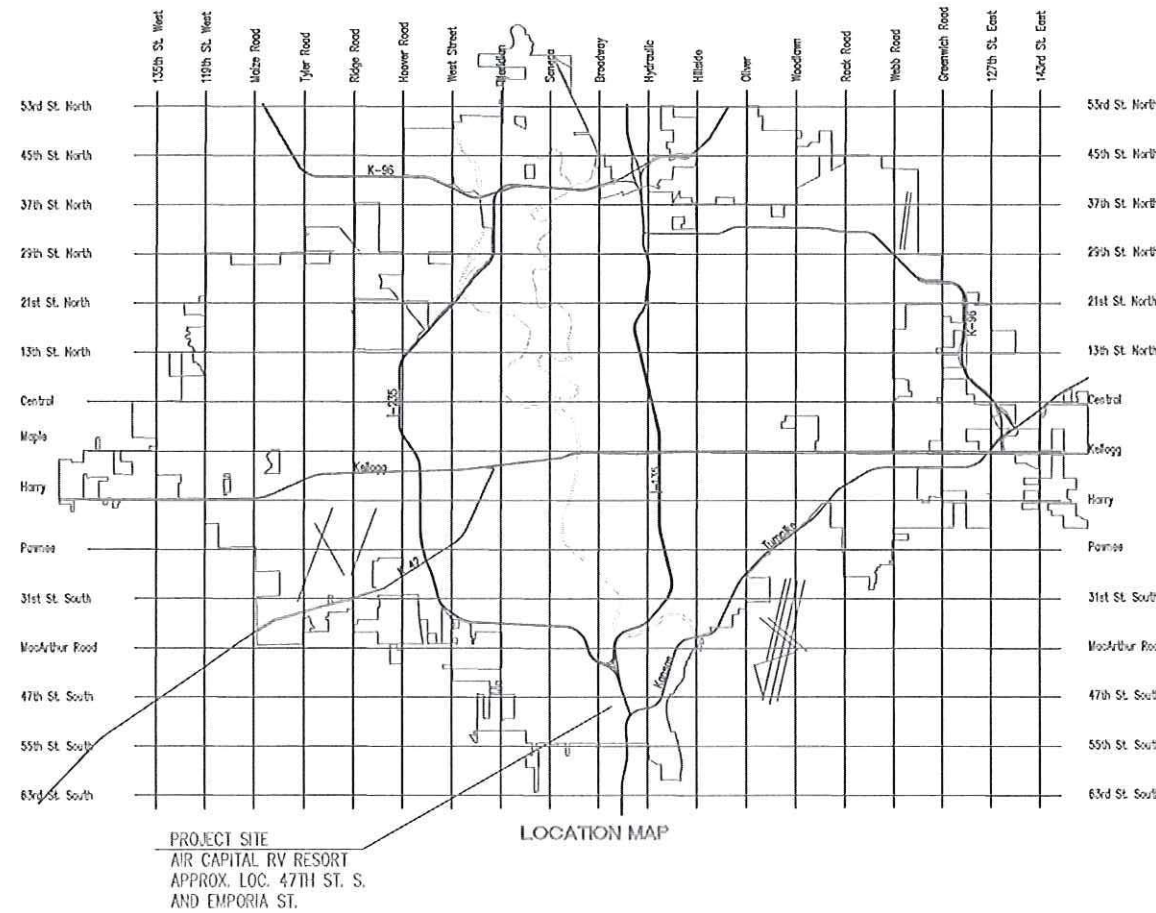
CONTRACTOR:
Wichita Excavation Inc.
2107 N. Tealbrook Ct.
Wichita, Kansas 67235
316-992-4542
License: 3872

INSPECTOR:
Allied Environmental Consultants, Inc.
1109 N. Topeka
Wichita, Kansas 67214
316-262-5698

.pdf by TBF, 6/12/12

INDEX OF SHEETS

1. TITLE SHEET, LOCATION MAP, AND DRAWING INDEX
2. PLAN & PROFILE
3. MANHOLE DETAILS



1"=20,000'

APPROVED AS NOTED
BY CITY ENGINEER OF WICHITA
Engineering *Julianne Killman* 5-2-12
NOTE TO CONTRACTORS
Inspection and testing for this project are to be provided by a Licensed Consulting Engineering Firm under contract with the Owner/Developer. Said inspection to be in accordance with the City of Wichita standard construction engineering practices and certified by a Licensed Professional Engineer. No work shall be performed in dedicated easements or public right-of-way by the Contractor without such inspection, nor shall any work be commenced without written authorization by the City Engineer.

APRIL 2012

Site Benchmark

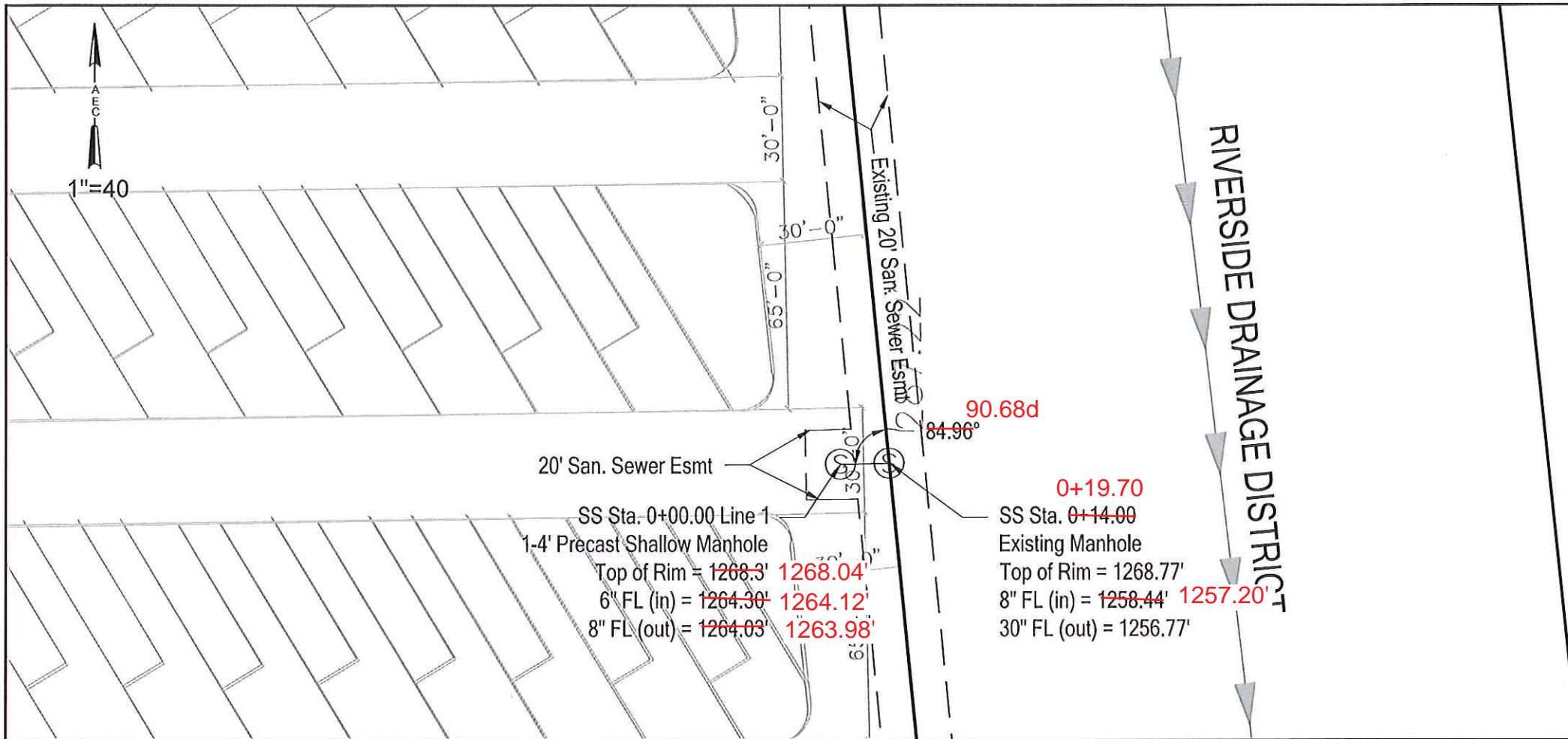
Square Cut Top Curb at SE Corner of Parking Lot, 121'N & 20.5'W of the SE Corner Lot 2, Southglen 2nd Addition.
Elevation = 1271.25' NGVD29

DATE	REVISIONS	DWN BY	CHKD BY



	PROJECT: 12044:5078	SHEET 1
	SCALE: AS_SHOWN	
TITLE SHEET, LOCATION MAP, AND DRAWING INDEX		SHT: 1.OF.3
DWN BY: SML	CHKD BY: TBF	

FILENAME: C:\USERS\LINEHAN\DESKTOP\BILL MORRIS RV PARK\PLAN AND PROF_SML.DWG



EXISTING MANHOLE LOCATION:
281.412' S. & 35.248' E OF THE
SE CORNER, LOT 2, SOUTHGLEN
2ND ADDITION

PROPOSED MANHOLE LOCATION:
281.412' S. & 21.248' E OF THE
SE CORNER, LOT 2, SOUTHGLEN
2ND ADDITION

20' San. Sewer Esmt

SS Sta. 0+00.00 Line 1
1-4' Precast Shallow Manhole
Top of Rim = 1268.3' **1268.04'**
6" FL (in) = 1264.30' **1264.12'**
8" FL (out) = 1264.03' **1263.98'**

SS Sta. 0+14.00
Existing Manhole
Top of Rim = 1268.77'
8" FL (in) = 1258.44' **1257.20'**
30" FL (out) = 1256.77'

REVISIONS



1109 N. TOPEKA • WICHITA, KS 67214
• 316.262.5698 •

AIR CAPITAL RV
RESORT

DWN BY: TBF

CHKD BY: SML

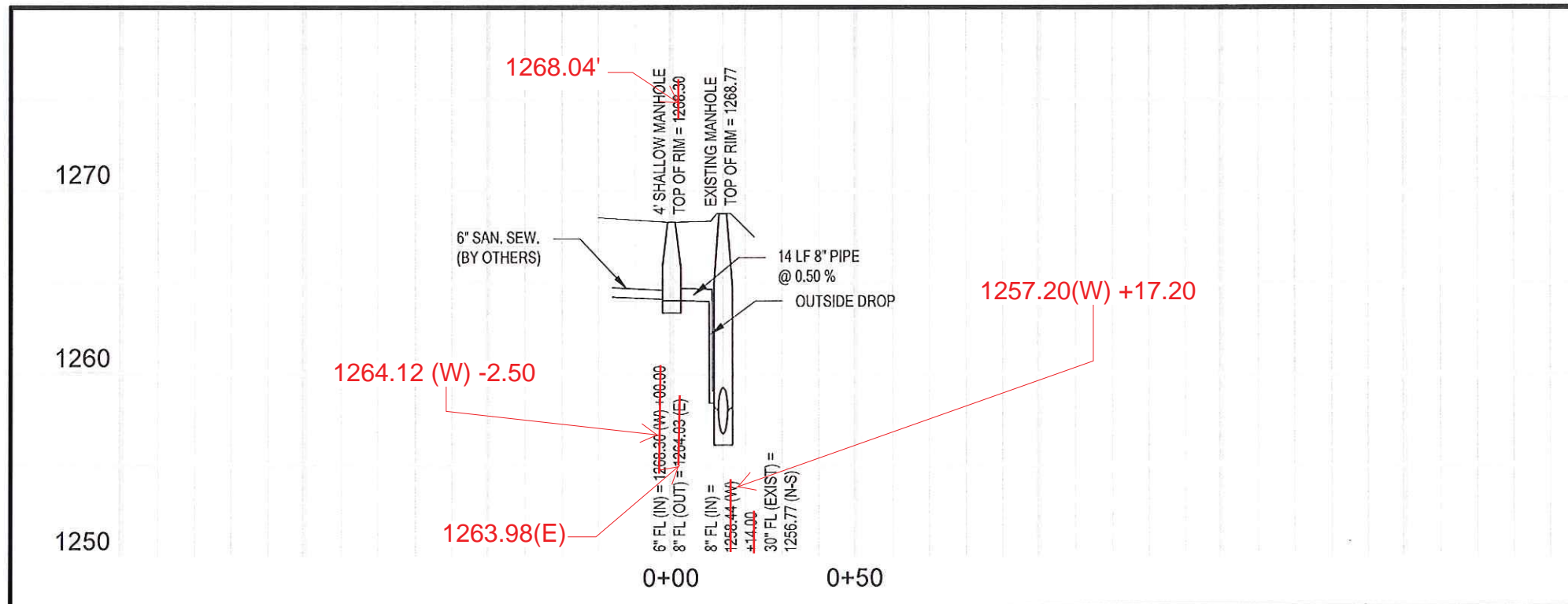
DATE: 4-30-12

SANITARY SEWER
PLAN & PROFILE

SHT: 2

SHT: 2 OF 3

PROJECT: 5078:12044



1268.04'

1264.12 (W) -2.50

1263.98(E)

1257.20(W) +17.20

6" SAN. SEW. (BY OTHERS)

4' SHALLOW MANHOLE
TOP OF RIM = 1268.30

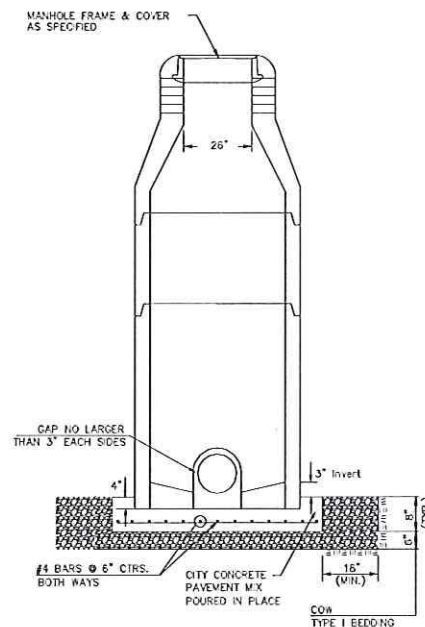
EXISTING MANHOLE
TOP OF RIM = 1268.77

14 LF 8" PIPE
@ 0.50%
OUTSIDE DROP

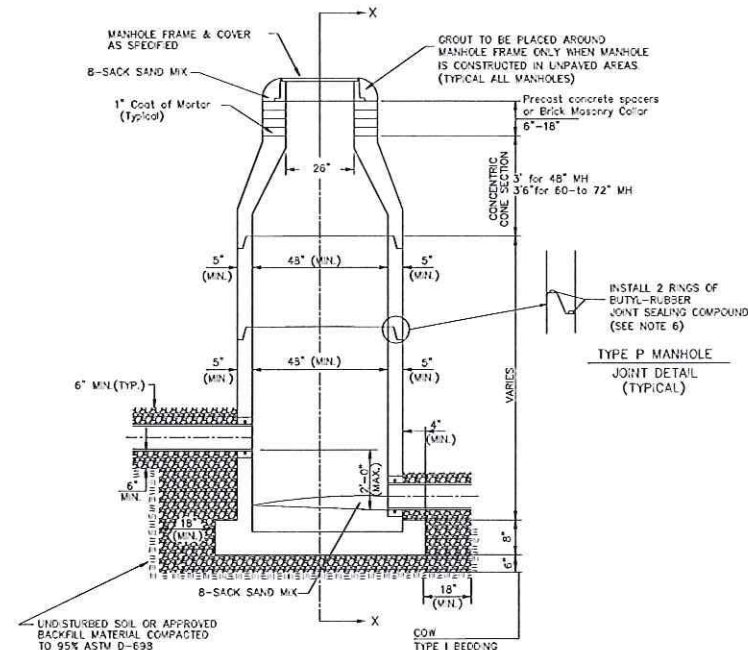
6" FL (IN) = 1268.30 (W) +0.00
8" FL (OUT) = 1264.03 (E)

8" FL (IN) = 1258.44 (W) +14.00
30" FL (EXIST) = 1256.77 (N-S)

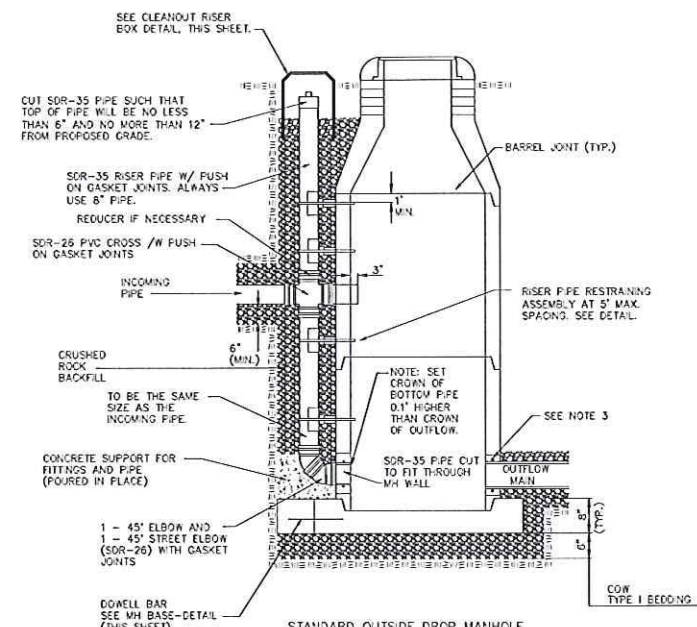
0+00 0+50



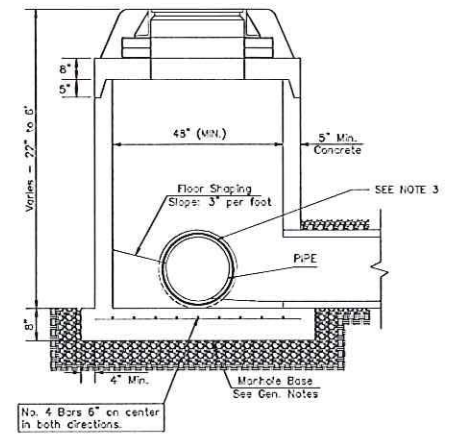
DOG HOUSE MANHOLE
(OVER EXISTING PIPE)
Not to Scale



STANDARD MANHOLE
Not to Scale



STANDARD OUTSIDE DROP MANHOLE
Not to Scale

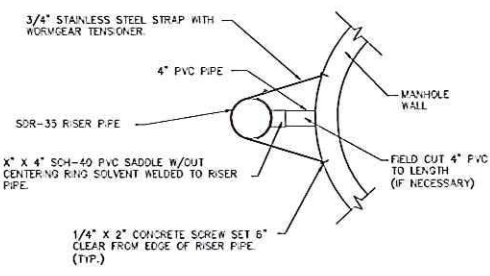


SHALLOW MANHOLE
Not to Scale

 = COW TYPE I BEDDING
 = UNDISTURBED SOIL

PRECAST MANHOLE GENERAL NOTES

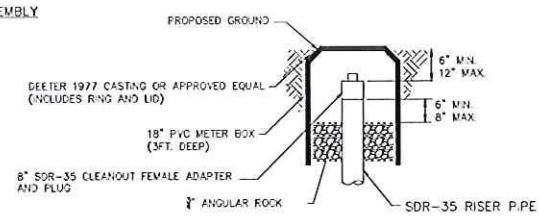
- ALL PRECAST CONCRETE MANHOLE SECTIONS SHALL CONFORM TO THE LATEST REVISIONS OF A.S.T.M. C478 AS MODIFIED BY THE SPECIFICATIONS.
- NON-SHRINK GROUT SHALL BE NON-METALLIC TYPE.
- APPROVED FLEXIBLE WATERSTOP SHALL BE INSTALLED TO JOIN THE SEWER PIPE TO THE MANHOLE WALL. THE SEWER PIPE SHALL BE SUPPORTED WITH CRUSHED ROCK A MINIMUM OF 3 FEET FROM THE FEET FROM THE MANHOLE WALL AND TO THE FIRST JOINT FOR V.C.P. SUCH THAT THE JOINT REMAINS FLEXIBLE.
- ALL INSIDE SURFACES OF THE CONCRETE MANHOLE WHICH WOULD BE EXPOSED TO SEWER GAS SHALL BE COATED PER SECTION 804.4 OF STANDARD SPECIFICATIONS.
- EXTERIOR MANHOLE WALLS SHALL BE COATED PER SECTION 804.4 OF STANDARD SPECIFICATIONS.
- JOINT SEALING COMPOUND SHALL BE PER 804.4 OF STANDARD SPECIFICATIONS.
- ALL MANHOLE SECTION JOINTS THAT WILL BE IN GROUNDWATER OR GREATER THAN 12\"/>



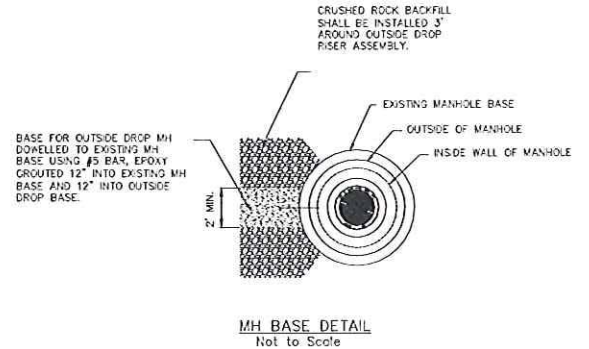
RISER PIPE RESTRAINING ASSEMBLY
Not to Scale

SANITARY SEWER MANHOLE DIAMETERS

DIAMETER	DEPTH	PIPE SIZE
4'	0'-15'	8"-18"
5'	15'-30'	21"-30"
6'	>30'	36"-60"



CLEANOUT RISER BOX DETAIL
Not to Scale



MH BASE DETAIL
Not to Scale



CITY OF WICHITA
PUBLIC WORKS & UTILITIES
ENGINEERING DIVISION

PRECAST SANITARY SEWER MANHOLE

CITY ENGINEER
JAMES L. ARMOUR, P.E., L.S.

PROJECT NUMBER	OCA NUMBER	DATE
		01/2012

CITY ENGINEER'S OFFICE
CITY HALL - SEVENTH FLOOR
455 NORTH MAIN STREET
WICHITA, KANSAS 67202-1620
(316) 268 4501

SHEET
3 of 3