

AS BUILT PLANS - BUILT AS DESIGNED
CONTRACTOR: UTILITIES PLUS
INSPECTOR: RANDY VOTH, C.E.D.
PDF BY: C.C., 12-27-2011

THE WICHITA AIRPORT AUTHORITY
WICHITA, KANSAS

COLONEL JAMES JABARA AIRPORT

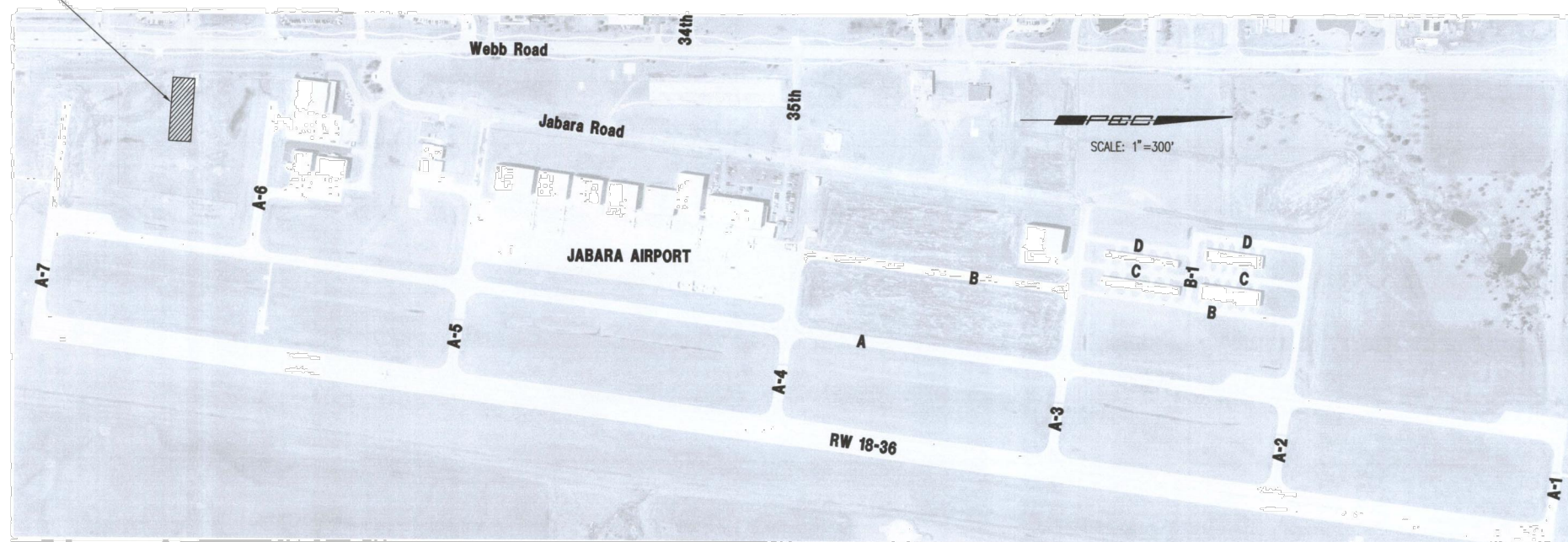
PLANS FOR REHABILITATION OF AIRFIELD PAVEMENTS, RECONSTRUCTION OF GENERAL AVIATION APRON AND TAXIWAY A-6, AND TAXIWAY A-6 SITE IMPROVEMENTS

WATER DISTRIBUTION SYSTEM IMPROVEMENTS PRIVATE PROJECT NO. 1612 PPW (607853)

INDEX OF SHEETS

SHEET NO. 1	TITLE SHEET
SHEET NO. 2	KEY MAP AND GENERAL NOTES
SHEET NO. 3	STANDARD WATERLINE DETAILS
SHEET NO. 4	PLAN/PROFILE

PROJECT SITE



APPROVED AS NOTED
BY CITY ENGINEER OF WICHITA
& BY WICHITA FIRE DEPARTMENT

Water Mains (Engineering) *[Signature]* 9/16/11
Water Mains (Water) *[Signature]* 09-16-11
Fire Prot. Line *[Signature]* 9-20-2011

NOTE TO CONTRACTORS

PUBLIC PROPERTY:
Inspection and testing for the waterline is to be provided by a Licensed Consulting Engineering Firm under contract with the Owner/Developer. Said inspection to be in accordance with the City of Wichita standard construction engineering practices and certified by a Licensed Professional Engineer licensed in the State of Kansas. No work shall be performed in dedicated easements or public right-of-way by the Contractor without such inspection nor shall any work be commenced without written authorization by the City Engineer. All Construction and Materials shall comply with the City of Wichita Specifications and Standards (on file and available in the City Engineer's Office).

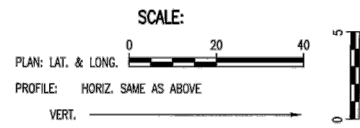
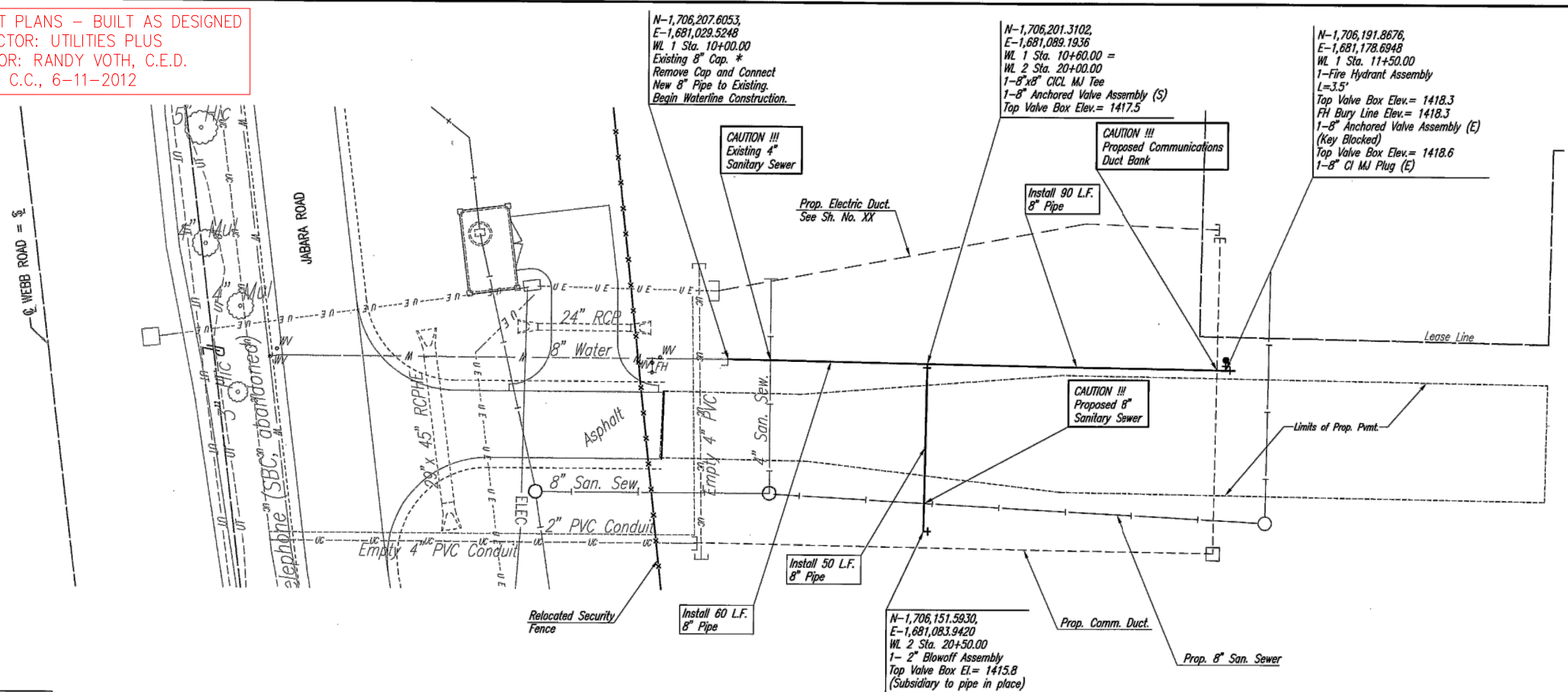
PRIVATE PROPERTY:
Installation and testing for the fire protection line is to be performed by a City of Wichita licensed fire protection contractor in accordance with the fire codes as adopted by the City of Wichita. All materials and construction practices for the fire protection line shall comply with the fire codes as adopted by the City of Wichita (available from the City of Wichita Fire Department). The Contractor shall not commence work without notification and approval of the Wichita Fire Department.
Inspection of the fire protection line is to be provided by the City of Wichita Fire Department and by a licensed Consulting Engineering Firm under contract with the Owner/Developer.
The contractor shall not start work until the project inspector is assigned to the project and present on the site. Any work done without inspection will be required to be uncovered for inspection.

SEPTEMBER 2011



AS BUILT PLANS - BUILT AS DESIGNED
 CONTRACTOR: UTILITIES PLUS
 INSPECTOR: RANDY VOTH, C.E.D.
 PDF BY: C.C., 6-11-2012

PLAN	CHECKED	DATE
	CHECKED	

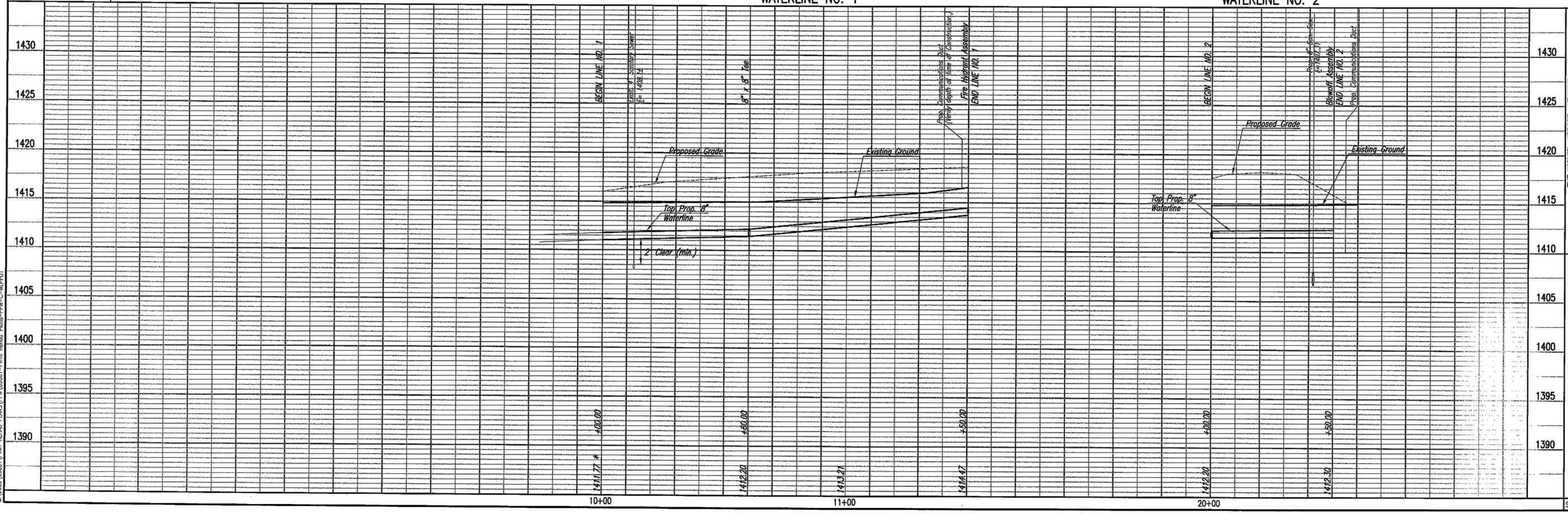


* PRIOR TO BEGINNING CONSTRUCTION, THE CONTRACTOR SHALL EXCAVATE THE EXISTING 8" WATERLINE AT STATION 10+00.00 TO VERIFY PIPE SIZE, TYPE, FITTINGS, AND HORIZONTAL AND VERTICAL LOCATION. THE CONTRACTOR SHALL REPORT HIS FINDINGS TO THE ENGINEER SO THAT ANY NECESSARY PLAN MODIFICATIONS CAN BE MADE. ANY ADDITIONAL LABOR OR MATERIALS NECESSARY TO COMPLETE THE CONNECTION SHALL BE CONSIDERED SUBSIDIARY TO THE PROJECT.



Unless noted otherwise, elevations shown are top of pipe

PROFILE	CHECKED	DATE
	CHECKED	



Sheet 08-31-2011 3:54:50 PM by JBN
 Plot Scale: 1:20 (08-14-2011 4:33:57 PM by JBN)
 C:\2009\08661\PM\REHAB PLANS\PPW\08661-PPW-Plan-Photos-PPW-C-M\PPW01

Sheet 4 of 4

THE WICHITA AIRPORT AUTHORITY
 JABARA AIRPORT

WATERLINE NO. 1 AND WATERLINE NO. 2

PROFESSIONAL ENGINEERING CONSULTANTS P.A.
 303 SOUTH TOPEKA WICHITA, KS 67202
 316-262-2981 www.pec.com

Designed By: MKK
 Drawn By: CSL
 Job No. 08661
 Date: July 2011

AIRFIELD PAVEMENT REHABILITATION
 PRIVATE PROJECT NO. 1612-PPW (607853)