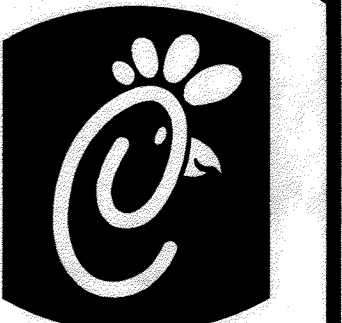


WATER LINES AND FIRE HYDRANTS TO SERVE CHICK-FIL-A STORE #3015



Chick-fil-A
5200 Buffington Rd.
Atlanta Georgia,
30349-2998

Revisions:
Mark Date By
△ _____

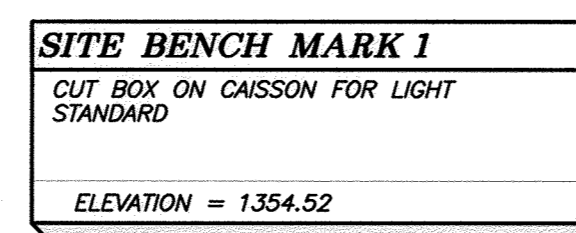
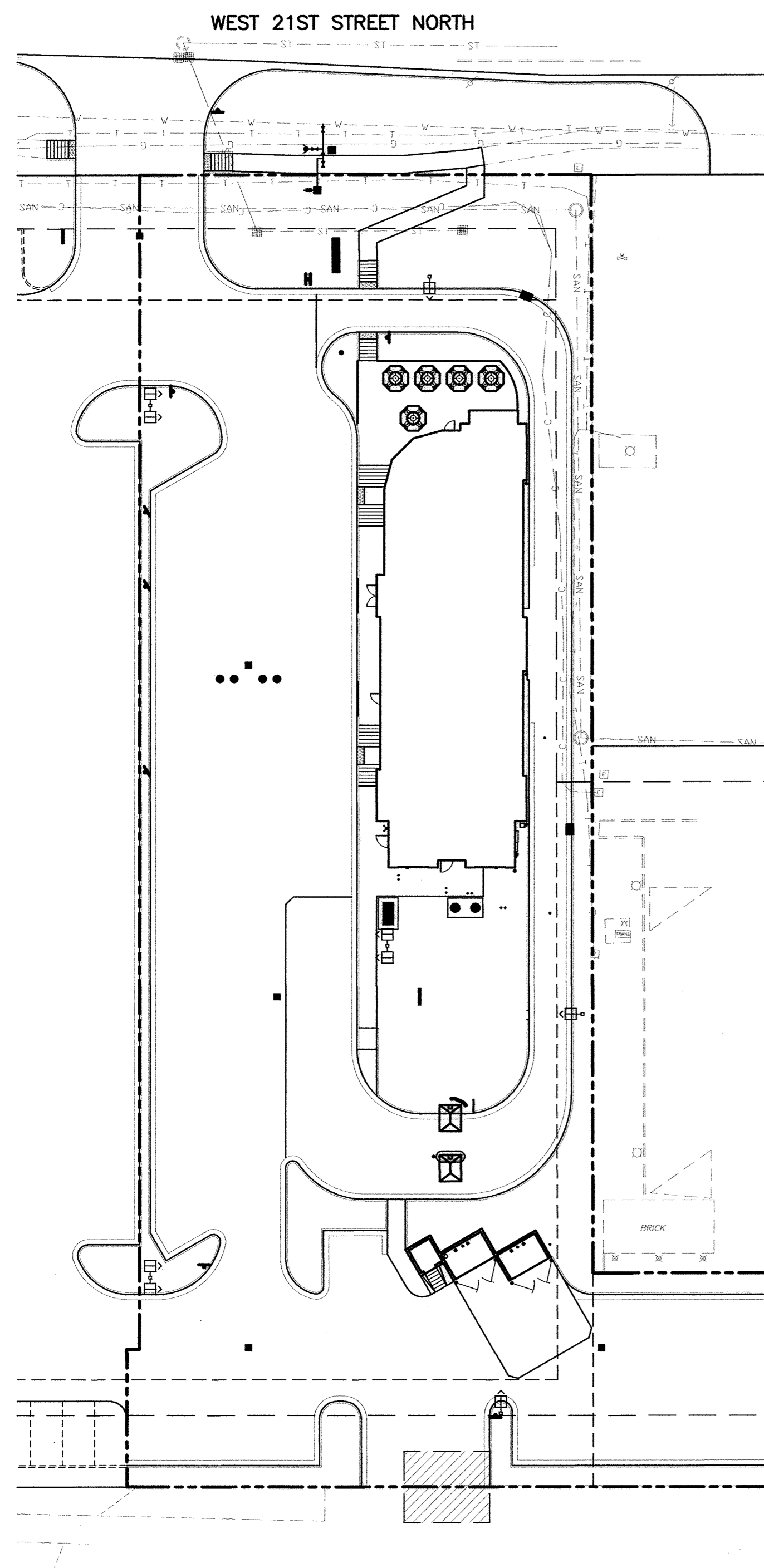
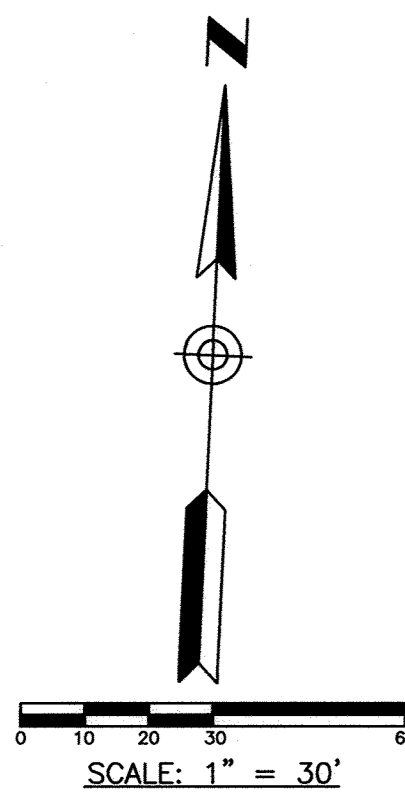
Mark Date By
△ _____

Mark Date By
△ _____

Mark Date By
△ _____

LOT 4, PEARSON FARMS 3RD ADDITION
PRIVATE PROJECT: 1629 PPW (607853)

CITY OF WICHITA, KANSAS
JAMES ARMOUR, P.E. CITY ENGINEER
OCTOBER, 2011



DESCRIPTION	INDEX	SHEET NO.
TITLE SHEET		PS-2.0
DETAIL SHEET		PS-2.1
DETAIL SHEET		PS-2.2
PLAN/PROFILE SHEET		PS-2.3

APPROVED AS NOTED
BY CITY ENGINEER OF WICHITA,
BY WICHITA WATER UTILITIES,
& BY WICHITA FIRE DEPARTMENT

Water Mains (Public Works) Julianne Kellman 2-15-12
Water Mains (Water Utilities) Drew Kelly 2-15-12
Fire Prot. Line (Fire Dept.) Brian Pearson 2-15-2012

NOTE TO CONTRACTORS

PUBLIC PROPERTY:
Inspection and testing for the waterline is to be provided by a Licensed Consulting Engineering Firm under contract with the Owner/Developer. Said inspection to be in accordance with the City of Wichita standard construction engineering practices and certified by a Licensed Professional Engineer licensed in the State of Kansas. No work shall be performed in dedicated easements or public right-of-way by the Contractor without such inspection nor shall any work be commenced without written authorization by the City Engineer. All Construction and Materials shall comply with the City of Wichita Specifications and Standards (on file and available in the City Engineer's Office).

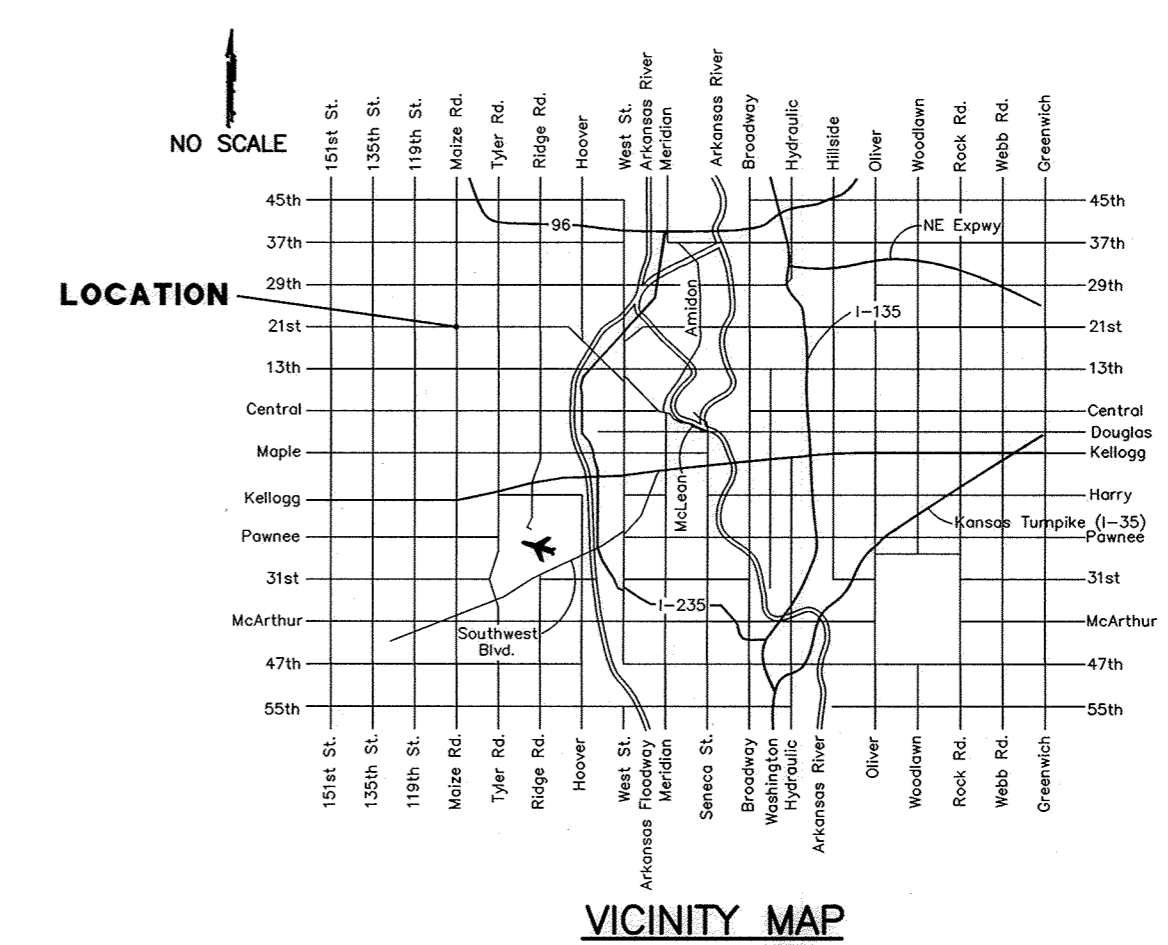
PRIVATE PROPERTY:
Installation and testing for the fire protection line is to be performed by a City of Wichita licensed fire protection contractor in accordance with the fire codes as adopted by the City of Wichita. All materials and construction practices for the fire protection line shall comply with the fire codes as adopted by the City of Wichita (available from the City of Wichita Fire Department). The Contractor shall not commence work without notification and approval of the Wichita Fire Department. Inspection of the fire protection line is to be provided by the City of Wichita Fire Department and by a licensed Consulting Engineering Firm under contract with the Owner/Developer. The contractor shall not start work until the project inspector is assigned to the project and present on the site. Any work done without inspection will be required to be uncovered for inspection.

GENERAL NOTES

- Contractor will be required to provide notice to utility companies a minimum of forty-eight (48) hours prior to any excavation, as follows:
Kansas One-Call 687-2470
- The Contractor must notify the following in case of an emergency:
Cox Communications 262-4270
Kansas Gas Service Company 1-888-482-4950
Westar Energy (Electric) 383-8650
Black Hills Energy (Gas) 1-800-303-0357
Southwestern Bell Telephone Co. 1-800-286-8313
City of Wichita Water Dept. (Water) 262-6000
City of Wichita Sewer Maintenance (SS) 262-8000
City of Wichita Storm Sewer Maintenance 268-4090
City of Wichita Traffic Maintenance 268-4034
- All disturbed R/W areas not intended for pavement or sidewalk construction shall be seeded with Kansas Premium Fescue Blend at a rate of 8 lb./1000 SF, fertilized with a 16-20-6 ratio at a rate of 4 lb./1000 SF and mulched with Prairie Hay at a rate of 92 lb./1000 SF. Mulch shall be "patted" with forks or punched into soil to reduce loss due to wind.
- Utility service lines, poles, valve boxes, meters, et cetera are to be adjusted as necessary by others prior to construction unless the plans specifically call for their adjustment by the Contractor or unless the plans specifically identify a utility to be adjusted by its owner during construction. Existing utilities and their location, as shown on the plans represent the best information obtainable for design and shall be field verified. The contractor will be required to work around existing utilities within the right-of-way which do not conflict with proposed construction.
- All water lines and appurtenances shall be installed in accordance with the most recent edition of City of Wichita, Kansas Standard Specifications for the Construction of City Projects.
- Contractor shall furnish the inspector with a copy of the manufacturer's certification for any pipe used on this project after completion of pipe installation. The engineer will not certify the project to the City until pipe certification has been received.
- Properties within the project limits may have underground sprinkler systems which conflict with new construction. Contractor will be required to remove such improvements should they not be removed by their owner at the time of construction. The Contractor will be required to salvage all sprinkler heads and/or valves and give such material to their owner. Portions of underground sprinkler systems not in conflict with new construction shall be protected from damage and shall remain in place. All work in connection with underground sprinkler systems shall be considered as subsidiary to the contract pay items of work.
- Contractor shall not start work on the project until the project inspector is assigned to the project and is present on the site. Contractor shall not start on the project until all necessary bonds and permits have been obtained. Bonds may include but are not limited to Statutory, Performance & Maintenance. Any work done without inspection will be required to be uncovered for inspection.
- Rubble from the removal of miscellaneous structures and excess excavation, which is to be wasted, shall be disposed of on sites to be provided by the Contractor. These sites shall be approved by the Engineer as to suitability, appearance and site location. Locations that, in the opinion of the Engineer, will leave an unsightly appearance will not be approved. All disposal sites must be approved by the Kansas Department of Health and Environment. Material either stockpiled or disposed of in a flood plain would require a Kansas State Board of Agriculture permit. Any material dumped in waters of the United States or wetlands is subject to U.S. Corps. of Engineers permitting regulations. Any material buried or stockpiled beyond approved construction limits would require additional archaeological investigations unless buried in a previously approved borrow location.

AS BUILTS

Contractor: Ewertz Excavation 6/12/2012	Project Inspector: Larry Gann kemiller engineering 516 S. Market, Wichita, KS 67202 (316)264-0242
--	---



GBC DESIGN, INC.
3978 W. Market St. Akron, OH 44333-3886
Phone 330-836-0228 Fax 330-836-5752

STORE #3015
FSR S08 N-144
Purchase Parcel

10515 W. 21st St.
Wichita, KS
67212

SHEET TITLE
WATER LINE
TITLE
SHEET

DWG EDITION 07.1
REVISION 1

Job No. : 44001A
Store : 3015
Date : 10/14/11
Drawn By : DKG
Checked By: ASW

Sheet
PS-2.0