

STORM WATER IMPROVEMENTS ALTA & ELLIS

PROJECT NO. 468-84799
O.C.A. NO. 133117

GENERAL NOTES

1. Contractor will be required to provide a minimum advance notice of seventy-two (72) hours to utility companies prior to starting any excavation as follows:

Kansas One-Call	687-2470
The Contractor must notify the following in case of an emergency:	
Cox Communications	260-7204
Kansas Gas Service	888-482-4950
Westar	383-8600
AT&T	1-800-286-8313
City of Wichita Water Department	262-6000
City of Wichita Sewer Maintenance	262-6000

2. Underground utility service lines and overhead utility pole lines are to be adjusted as necessary by others prior to construction unless the plans specifically call for their adjustment by the Contractor or unless the plans specifically identify a utility to be adjusted by its owner during construction. Existing utilities and their location, as shown on the plans, represent the best information obtainable for design. Location information has been obtained from the various utility companies and is either from company record drawings or company-provided field locations. The Contractor will be required to work around existing utilities within the right-of-way which do not conflict with proposed construction. The Contractor shall visit the site to verify utility conflicts prior to construction.

3. Rubble from the removal of miscellaneous structures and excess excavation which is to be wasted shall be disposed of on sites to be provided by the Contractor. These sites shall be approved by the Engineer as to suitability, appearance and site location. Locations that, in the opinion of the Engineer, will leave an unsightly appearance will not be approved.

4. All disposal sites must be approved by the Kansas Department of Health and Environment. Material either stockpiled or disposed of in a flood plain would require a Kansas State Board of Agriculture permit. Any material dumped in waters of the United States or wetlands is subject to U.S. Corps permitting regulations. Any material buried or stockpiled beyond approved of Engineers construction limits would require additional archeological investigations unless buried in a previously approved borrow location.

5. The Engineer shall take field ties to all quarter section corners. The Contractor shall set a City survey monument in the required location where such quarter section corners fall within the limits of pavement construction. Survey monuments will be furnished by the City. The Engineer will accurately locate and install the iron at the quarter section corner. This work will not be paid for directly, but shall be considered subsidiary to the other pay items of work in the contract.

6. The Contractor shall give all property owners and/or tenants of developed property directly abutting the construction of this project a minimum of ten (10) days advance notice prior to start of construction.

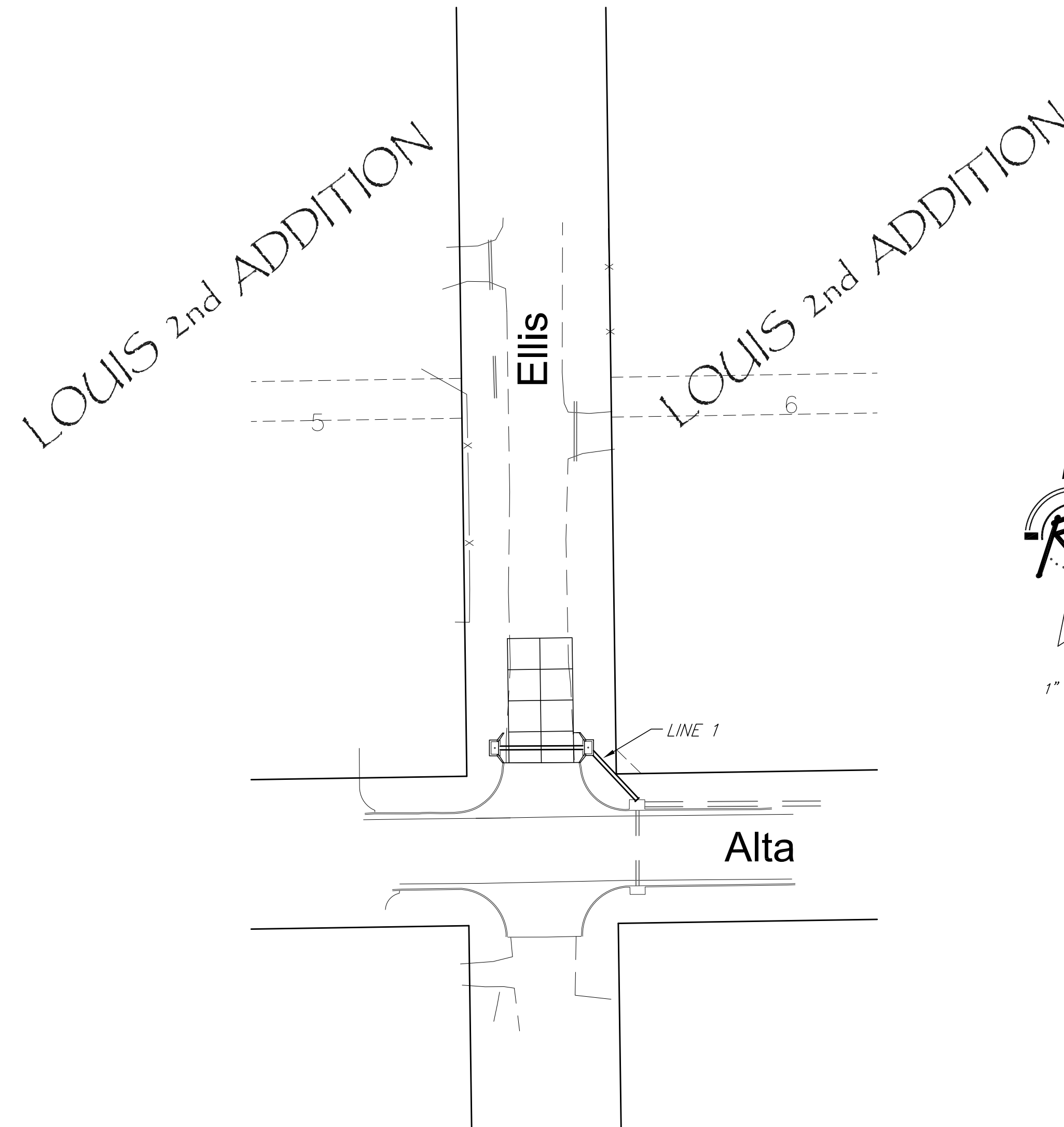
7. Any trash, rubble or other debris encountered at any time during the construction of this project shall be removed from the site. This work shall be incidental to the bid items for "Site Clearing".

8. The Contractor shall provide a traffic control plan and maintain flow of traffic for approval by the Engineer. Permit for Street Closure is the responsibility of the Contractor. Traffic control shall be in compliance with MUTCD Ch. 6.

9. The Contractor shall seed grassed areas disturbed by this project in accordance to the City of Wichita Spec. Section 902, and the City Administrative Regulation No. AR6.5

10. The Contractor shall be responsible for preserving property irons and a new property iron must be set at the southwest corner of Lot _____ . The Contractor will be required to re-establish any shown property irons which are disturbed by his construction operations. Such irons shall be re-established by a licensed Land Surveyor in accordance with state laws. Cost shall be subsidiary to the bid item for "Site Restoration".

11. Contractor shall reset or replace street signs that are in conflict with the Project at the same or approved location. If replaced, sign materials must meet the standards for public streets and approved by the Engineer.



 **IMPROVEMENT DISTRICT**

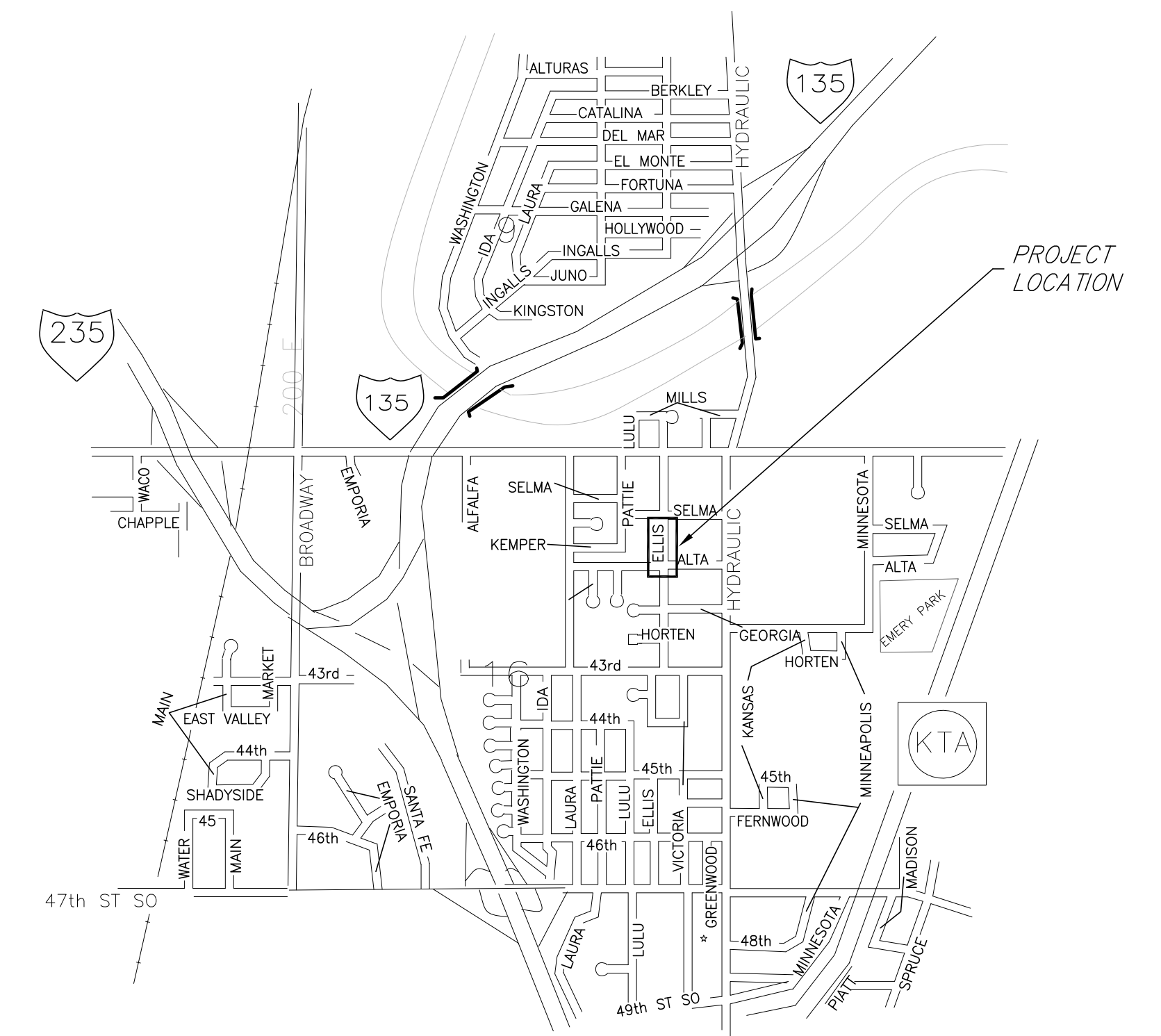
CITY OF WICHITA, KANSAS
GARY JANZEN, P.E. - INTERIM CITY ENGINEER

BENCHMARKS

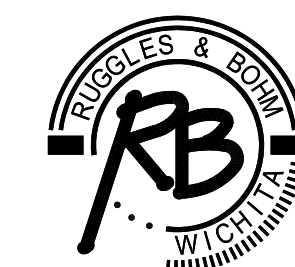
BM 1 SQ. CUT ON SW CORNER OF INLET TOP,
SE COR. OF INTERSECTION OF ALTA AND ELLIS
ELEV. 1273.02 NAVD 88

INDEX OF SHEETS

1. TITLE SHEET
2. STORM DRAIN PLAN/PROFILES
3. CONCRETE PAVEMENT DETAILS
4. INLET DETAILS
5. MANHOLE FRAME AND COVER DETAILS
- 6-7. EROSION CONTROL BMP DETAILS



VICINITY MAP



Ruggles & Bohm, P.A.
Engineering, Surveying, Land Planning
924 North Main (316) 264-8008
Wichita, Kansas 67203 (316) 264-4621 fax
www.rbkansas.com E-mail: info@rbkansas.com