

STORM WATER SEWER NO. 662  
TO SERVE  
**HAMPTON SQUARE SECOND ADDITION**

PHASE 2  
PROJECT NO. 468-84773

THE CITY OF WICHITA, KANSAS  
GARY JANZEN, P.E. - INTERIM CITY ENGINEER

OCA NO. 751500

**GENERAL NOTES**

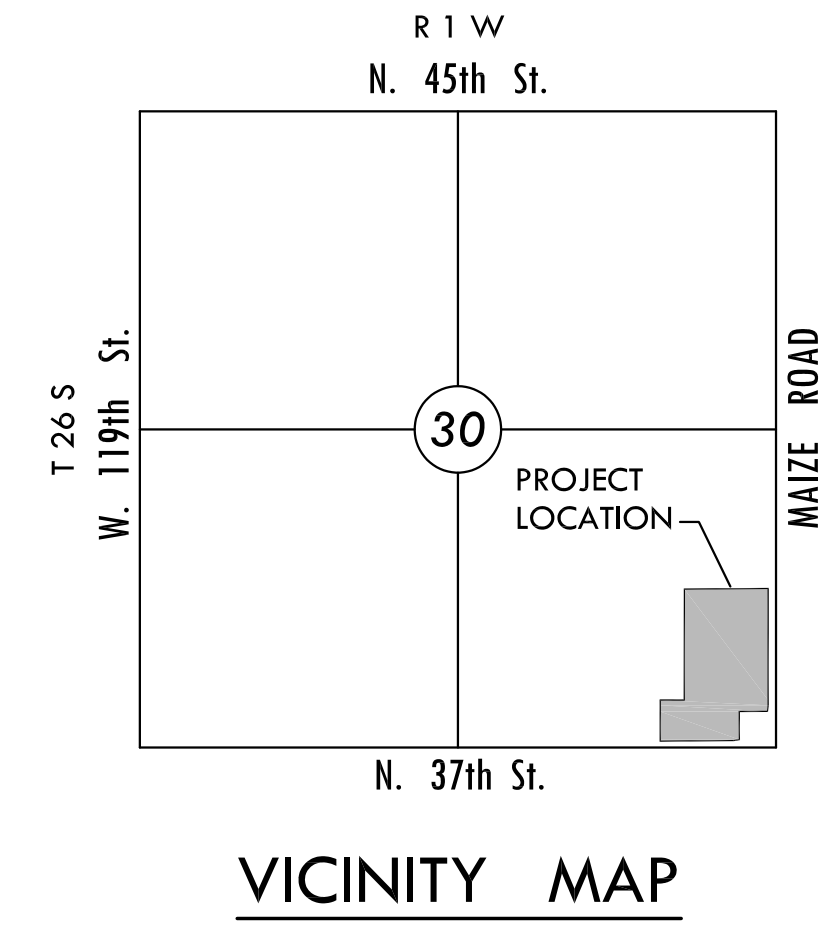
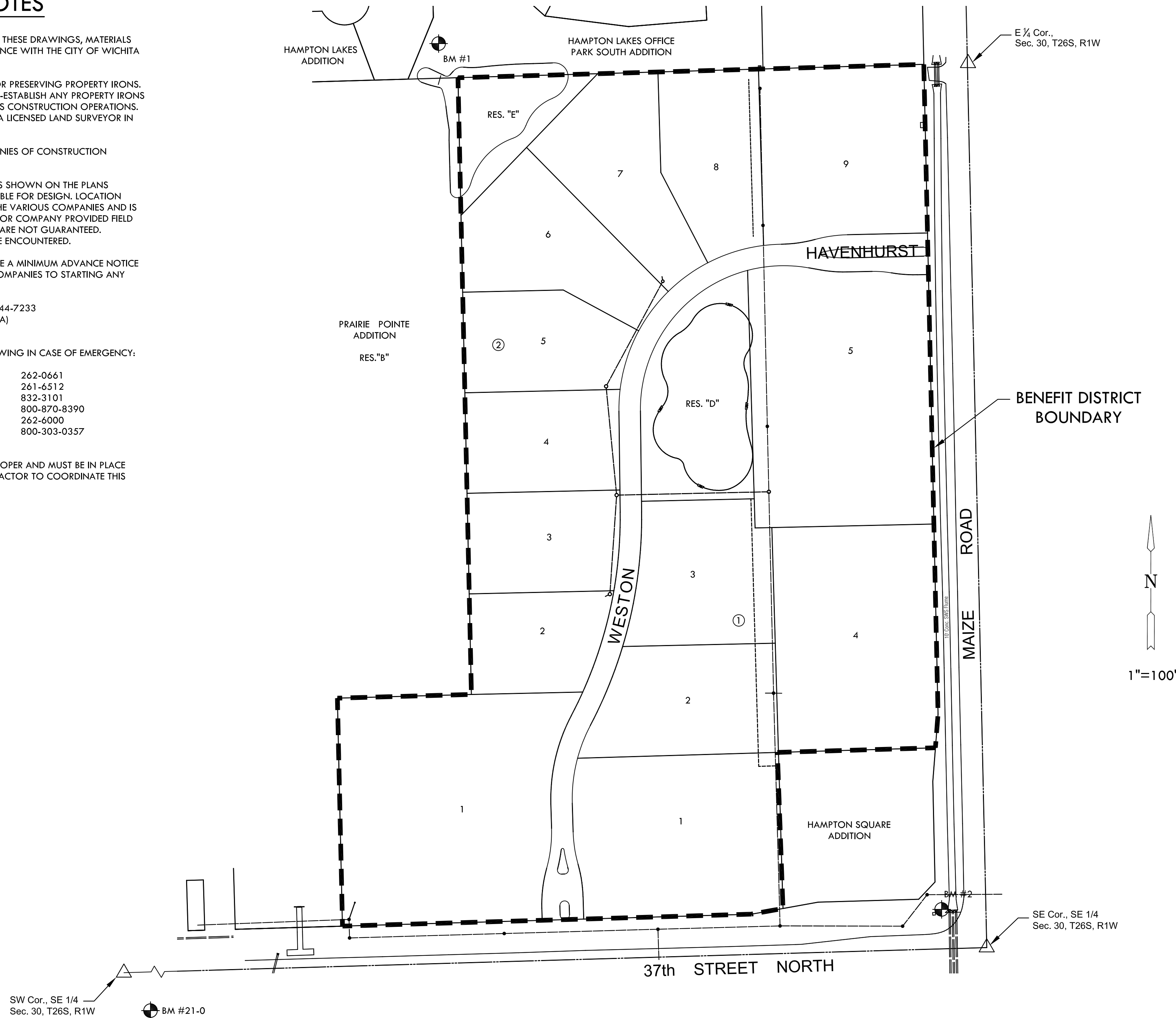
- UNLESS SHOWN OR OTHERWISE STATED ON THESE DRAWINGS, MATERIALS AND CONSTRUCTION SHALL BE IN ACCORDANCE WITH THE CITY OF WICHITA STANDARD SPECIFICATIONS.
- THE CONTRACTOR SHALL BE RESPONSIBLE FOR PRESERVING PROPERTY IRONS. THE CONTRACTOR SHALL BE REQUIRED TO RE-ESTABLISH ANY PROPERTY IRONS WHICH ARE DAMAGED OR DESTROYED BY HIS CONSTRUCTION OPERATIONS. SUCH IRONS SHALL BE RE-ESTABLISHED BY A LICENSED LAND SURVEYOR IN ACCORDANCE WITH STATE LAWS.
- CONTRACTOR SHALL NOTIFY UTILITY COMPANIES OF CONSTRUCTION SCHEDULING.
- EXISTING UTILITIES AND THEIR LOCATIONS, AS SHOWN ON THE PLANS REPRESENT THE BEST INFORMATION OBTAINABLE FOR DESIGN. LOCATION INFORMATION HAS BEEN OBTAINED FROM THE VARIOUS COMPANIES AND IS EITHER FROM COMPANY UTILITY DRAWINGS OR COMPANY PROVIDED FIELD LOCATIONS. THE PLAN LOCATIONS SHOWN ARE NOT GUARANTEED. ADDITIONAL EXISTING UTILITIES MAY ALSO BE ENCOUNTERED.
- CONTRACTOR WILL BE REQUIRED TO PROVIDE A MINIMUM ADVANCE NOTICE OF SEVENTY-TWO (72) HOURS TO UTILITY COMPANIES TO STARTING ANY EXCAVATION AS FOLLOWS:

KANSAS ONE-CALL 800-344-7233  
OR 687-2470 (LOCAL WICHITA)

THE CONTRACTOR MUST NOTIFY THE FOLLOWING IN CASE OF EMERGENCY:

COX COMMUNICATIONS (CABLE)	262-0661
WESTAR (ELECTRIC)	261-6512
KANSAS GAS SERVICE (GAS)	832-3101
SBC (TELEPHONE)	800-870-8390
CITY OF WICHITA WATER & SEWER	262-6000
BLACK HILLS ENERGY (GAS)	800-303-0357

- IRRIGATION WILL BE INSTALLED BY THE DEVELOPER AND MUST BE IN PLACE PRIOR TO ANY PLACEMENT OF SOD. CONTRACTOR TO COORDINATE THIS WORK WITH THE DEVELOPER.
- DEVELOPER FOR THIS PROJECT IS:  
HAMPTON SQUARE, LLC  
7926 WEST 21st STREET  
WICHITA, KANSAS 67205  
MARVIN L. SCHELLENBERG, MANAGER  
PHONE NUMBER



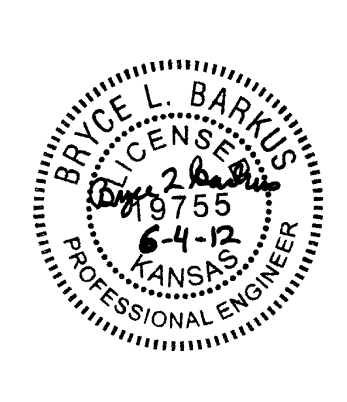
**INDEX TO DRAWINGS**

SHEET NO.	DESCRIPTION
1	TITLE SHEET
2	LANDSCAPE PLAN
3	PLAT

**BENCHMARKS**

- BM#21-0** CHISELED SQUARE ON CONCRETE BASE OF BRICK FENCE POST ON SOUTH SIDE OF 37TH ST. 1573 FEET WEST OF MAIZE RD.  
ELEV. = 1356.01 NAVD 88
- BM#1** CHISELED SQUARE ON TOP OF CURB AT SOUTH END OF ENTRANCE ISLAND AT HAMPTON LAKES ST. AND MANCHESTER ST.  
ELEV. = 1357.69 NAVD 88
- BM#2** CHISELED SQUARE AT NORTHWEST CORNER OF PAD OF TRAFFIC SIGNAL MANHOLE AT NORTHWEST CORNER OF MAIZE RD. AND 37TH ST.  
ELEV. = 1354.49 NAVD 88

**MKEC**  
ENGINEERING  
CONSULTANTS, INC.  
411 N. WEBB ROAD  
WICHITA, KS. 67206  
316-684-9600



STORM WATER SEWER NO. 662  
**HAMPTON SQUARE SECOND**  
PHASE 2

**TITLE SHEET**  
SHEET TITLE  
**468-84773**  
PROJECT NUMBER

MKEC / DMM / GJA  
DESIGNED DRAWN CHECKED

ISSUED  
**April 2012**

REVISED

SHEET NO.  
**1 of 3**

PLOTTED: Tuesday, June 05, 2012 @ 08:37AM

J:\PROJECTS\2010\1001010682-PRMIEP-HAMPTON SQUARE 2ND\5-CIVIL\CAD\LANDSCAPE\RESERVE D IMPROVEMENTS\10582-TITLE SHEET.DWG