

**STORM WATER SEWER NO. 662
HAMPTON SQUARE SECOND
PHASE 2**

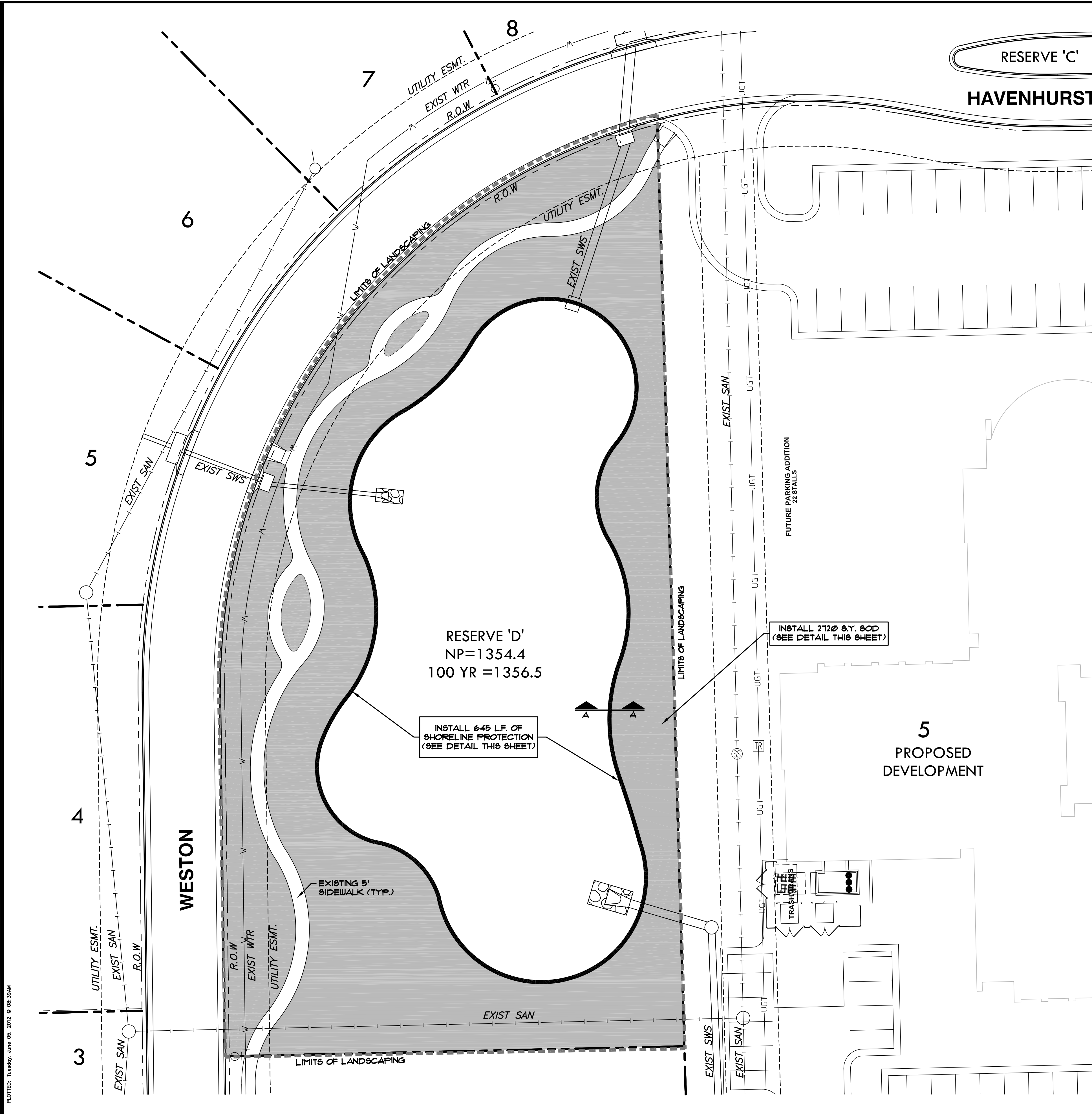
LANDSCAPE PLAN

SHEET TITLE
468-84773
PROJECT NUMBER

MKEC | DMM | GJA
DESIGNED DRAWN CHECKED

ISSUED
April 2012
REVISED

SHEET NO.
2 of 3



DRY-STACK QUARRY BLOCK STONE
14" NATURAL LEDGE
6"-8" NATURAL LEDGE
AVERAGE LENGTH: 4' TO 6'
MINIMUM COMPRESSIVE STRENGTH: 10000 PSI
COLOR: FLINT HILLS GRAY

PLACEMENT
MINIMUM STONE OVERLAP IN WALL COURSE SHALL BE 12". WALL GAP BETWEEN VERTICAL JOINTS SHALL BE NO MORE THAN 1" MAX. WHERE NECESSARY, FILL MATERIAL (SMALL ROCK) SHALL BE USED TO FILL GAPS. THESE AREAS SHALL BE KEPT TO A MINIMUM. FIELD VERIFY WITH OWNER'S REPRESENTATIVE PRIOR TO FINAL ACCEPTANCE.

SURFACE FINISH
EXPOSED WALL SURFACE SHALL HAVE A DRESSED STONE FINISH.

FILTER FABRIC
MIRAFI NON-WOVEN GEOTEXTILE FILTER FABRIC 140N (OR APPROVED EQUAL)

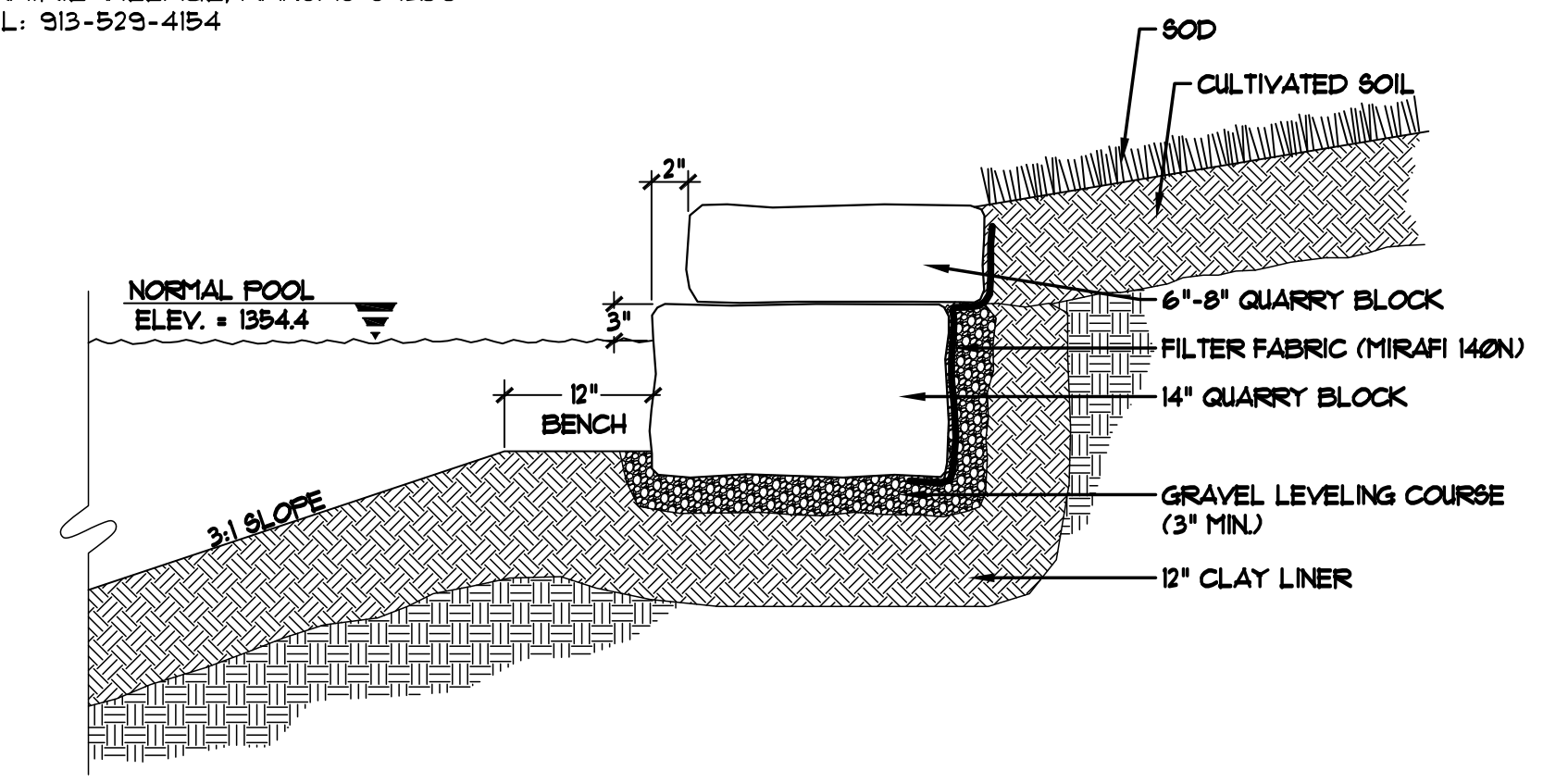
GRAVEL LEVELING COURSE
LEVELING COURSE SHALL BE 3" MINIMUM IN DEPTH

CLAY LINER
THE EXISTING DETENTION POND WAS CONSTRUCTED WITH A CLAY LINER. TO ENSURE THE POND WILL CONTINUE TO HOLD WATER AFTER INSTALLATION OF THE QUARRY BLOCK WALL, THE CONTRACTOR SHALL RE-ESTABLISH A CONTINUOUS, IMPERVIOUS CLAY LINER AREA UNDER THE QUARRY BLOCK WALL. THE CLAY LINER IN THIS AREA SHALL BE CONSTRUCTED IN TWO SIX-INCH LIFTS, CONSISTING OF CLAY MATERIAL HAVING A MINIMUM P.I. OF 30. CLAY MATERIAL SHALL BE COMPACTED TO A MINIMUM DENSITY OF 95%, PER OF ASTM D698

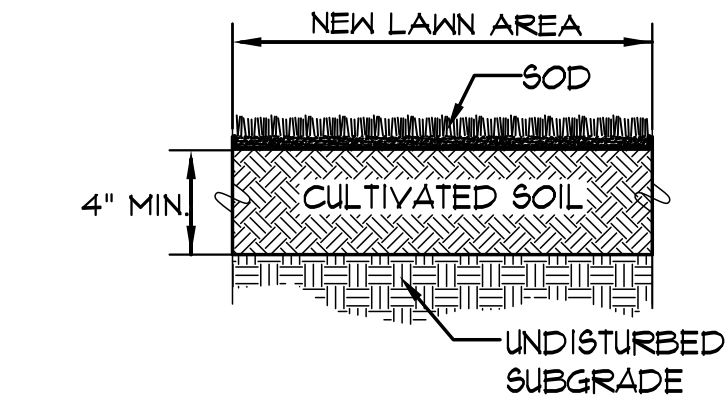
STONE SOURCE
KEITH SCOTT & COMPANY, INC.
P.O. BOX 1828
BLUE SPRINGS, MISSOURI 64103
OFFICE: 816-224-8850

BAYER STONE, INC.
120 N. 6th STREET
ST. MARYS, KANSAS 66536
TEL: 785-437-2181 FAX: 785-437-3120

US STONE INDUSTRIES, LLC
3515 W. 75th STREET
PRAIRIE VILLAGE, KANSAS 67208
TEL: 913-523-4154



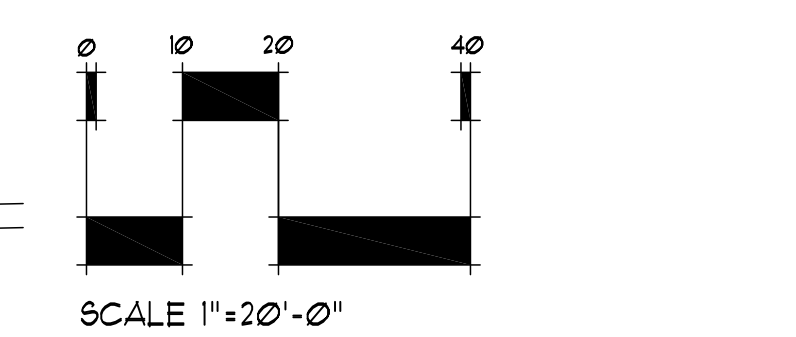
SHORLINE PROTECTION DETAIL - SECTION A
NOT TO SCALE



SOD INSTALLATION
NOT TO SCALE

- SOD INSTALLATION NOTES:**
1. FINISHED GRADES SHALL BE ACCURATE.
 2. CULTIVATE ENTIRE AREA TO A MINIMUM 4" DEPTH. EXCEPTIONS TO AREAS MAY BE MADE IF TREE ROOTS ARE ENCOUNTERED WITHIN THE DRIPLINE OF EXISTING TREES. HAND RAKE SMOOTH.
 3. LAY AND ROLL SOD. WATER THOROUGHLY.
 4. STAGGER JOINTS AND BUTT JOINTS TOGETHER TIGHTLY.
 5. STAKE SOD ON SLOPES 4:1 OR STEEPER.
 6. SOD SHALL BE KANSAS PREMIUM BLEND FESCUE.
 7. SOD SHALL NOT BE PLACED UNTIL OWNER'S PRIVATE IRRIGATION SYSTEM HAS BEEN INSTALLED.

LANDSCAPE PLAN
SCALE: 1" = 20'-0"



- LEGEND**
- - - - - EXISTING WATERLINE
 - - - - - EXISTING SANITARY SEWER
 - - - - - EXISTING STORMWATER SEWER
 - - - - - EXISTING UNDERGROUND TELEPHONE
 - - - - - LIMITS OF LANDSCAPING
 - PROPOSED SOD

PLOTTED: Tuesday, June 05, 2012 @ 08:30AM

J:\PROJECTS\2010\1001010692_PREMIER HAMPTON SQUARE 2ND\5-CIVIL\CAD\LANDSCAPE\RESERVE D IMPROVEMENTS\10582_PLAN & DETAILS.DWG