

AS BUILT PLANS
CONTRACTOR: UTILITIES PLUS
INSPECTOR: RANDY VOITH, C.E.D.
PDF BY: C.C., 6-11-2012

Release Date: 6/21/2012
: APRosas 6/27/2012

THE WICHITA AIRPORT AUTHORITY WICHITA, KANSAS

COLONEL JAMES JABARA AIRPORT

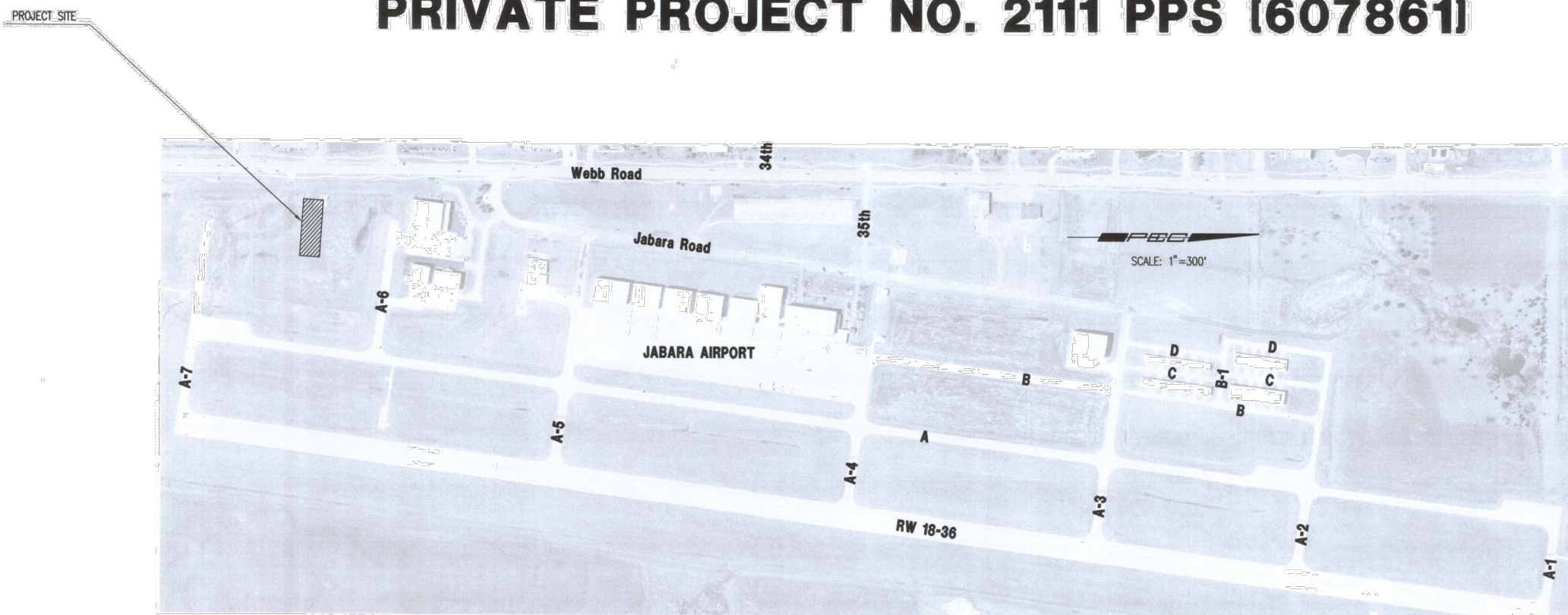
PLANS FOR

REHABILITATION OF AIRFIELD PAVEMENTS, RECONSTRUCTION OF GENERAL AVIATION APRON AND TAXIWAY A-6, AND TAXIWAY A-6 SITE IMPROVEMENTS

SANITARY SEWER EXTENSION PRIVATE PROJECT NO. 2111 PPS (607861)

INDEX OF SHEETS

SHEET NO. 1	TITLE SHEET
SHEET NO. 2	KEY MAP AND GENERAL NOTES
SHEET NO. 3	PLAN/PROFILE
SHEET NO. 4	TYPE "P" MANHOLE DETAILS
SHEET NO. 5	FRAME & COVER DETAILS
SHEET NO. 6	MANHOLE ADJUSTMENT DETAIL



APPROVED AS NOTED
BY CITY ENGINEER OF WICHITA

Engineering

Julianne Killman 9-16-11

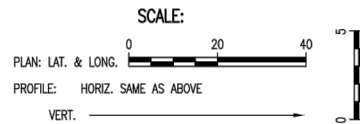
NOTE TO CONTRACTORS

Inspection and testing for this project are to be provided by a Licensed Consulting Engineering Firm under contract with the Owner/Developer. Said inspection to be in accordance with the City of Wichita standard construction engineering practices and certified by a Licensed Professional Engineer. No work shall be performed in dedicated easements or public right-of-way by the Contractor without such inspection, nor shall any work be commenced without written authorization by the City Engineer.

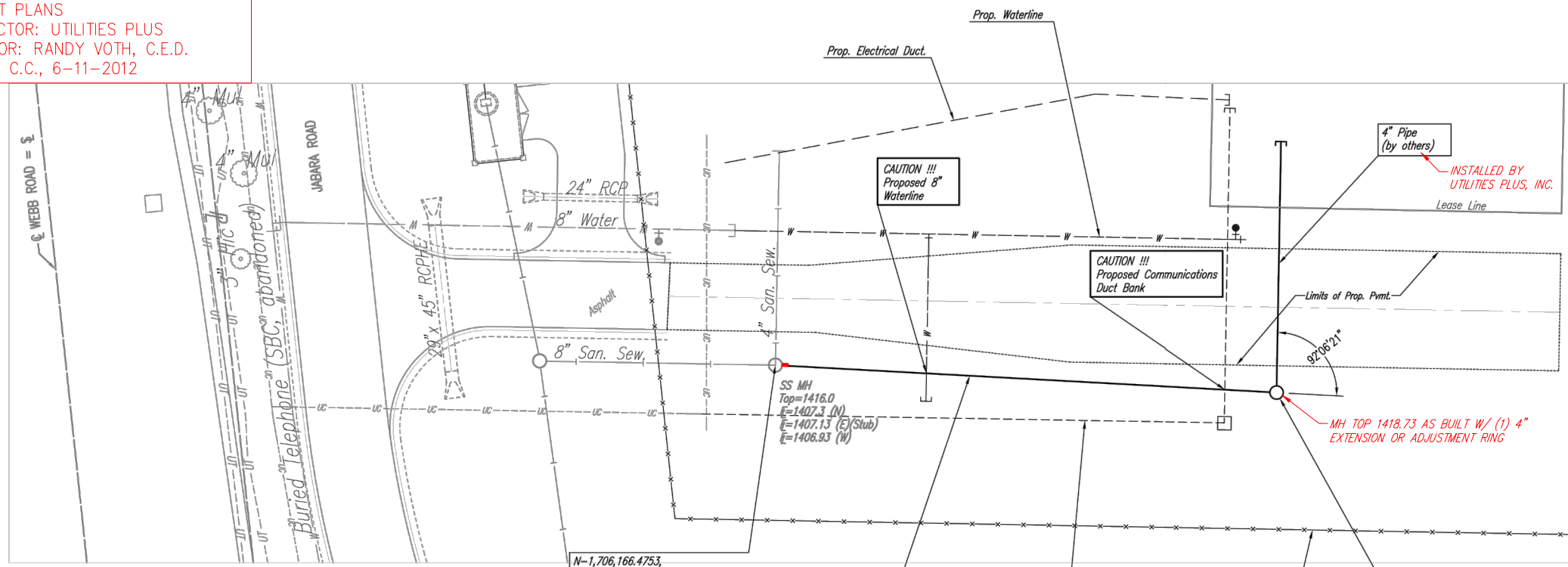
SEPTEMBER 2011



AS BUILT PLANS
 CONTRACTOR: UTILITIES PLUS
 INSPECTOR: RANDY VOTH, C.E.D.
 PDF BY: C.C., 6-11-2012



PLAN	CHECKED	DATE
	CHECKED	



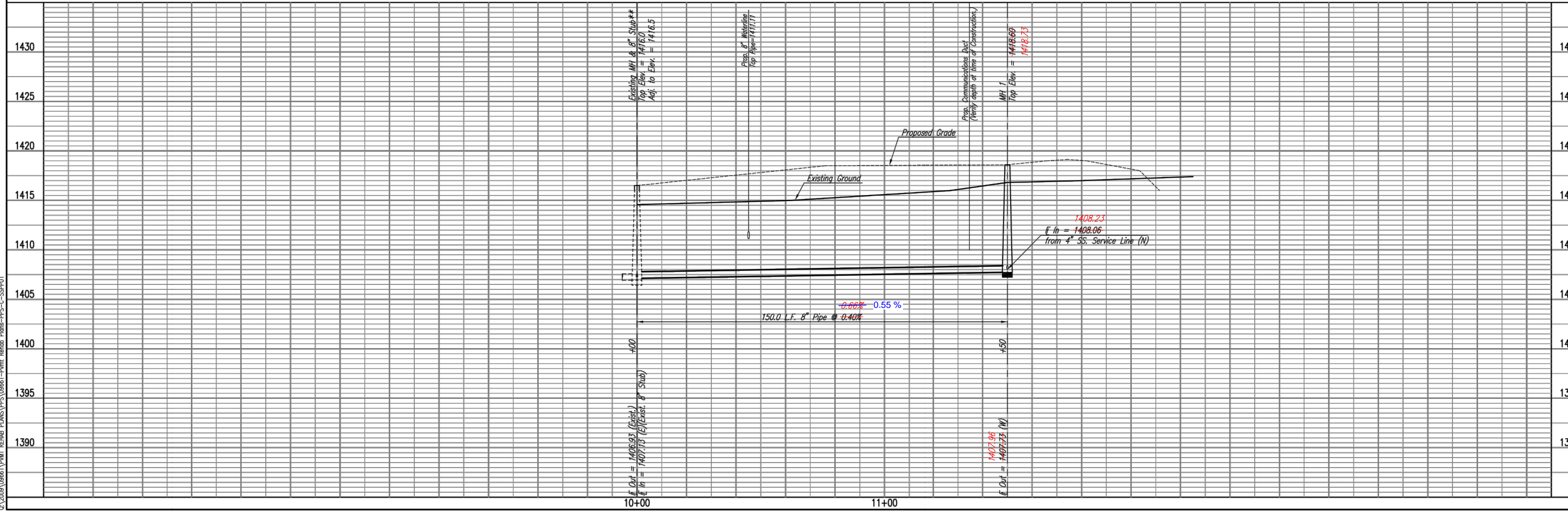
* ALL MANHOLES TO BE FURNISHED WITH 2-6" PRECAST CONCRETE ADJUSTMENT RINGS.
 ** PRIOR TO BEGINNING CONSTRUCTION, THE CONTRACTOR SHALL EXCAVATE THE EXISTING 8" PIPE AT EXISTING MH, SANITARY SEWER STATION 10+00.0 TO VERIFY ITS HORIZONTAL AND VERTICAL LOCATION. THE PIPE LOCATION SHALL BE REPORTED TO THE ENGINEER SO THAT ANY NECESSARY PLAN MODIFICATIONS CAN BE MADE. ANY ADDITIONAL LABOR OR MATERIALS NECESSARY TO COMPLETE THE CONNECTION SHALL BE CONSIDERED SUBSIDIARY TO THE PROJECT. TYPE OF PIPE MATCH SHALL MATCH THE EXISTING PIPE STUB. CONTRACTOR SHALL ALSO VERIFY THE EXISTING MH TOP ELEVATION TO CONFIRM MH ADJUSTMENT REQUIRED.

N=1,706,166.4753,
 E=1,681,038.0412
 Sta. 10+00.00
 Existing Precast Concrete MH.
 Connect new 8" Pipe to existing 8" Stub.**
 Adjust MH Top per MH adjustment details,
 sheet no. 6.
 Exist. MH Elev.= 1416.0
 Prop. MH Elev.= 1416.5
 Difference in elevation = +0.5'

N=1,706,145.2780,
 E=1,681,186.6484
 Sta. 11+50.00
 Construct MH 1
 Standard MH*

SANITARY SEWER NO. 1

PROFILE	CHECKED	DATE
	CHECKED	



Saved: 06-30-2011 3:59:54 PM by: C.C.
 C:\2009\06661\PM\REHAB PLANS\PPS\06661-Pvmt Rehab Plans-PPS-C-SSP01

THE WICHITA AIRPORT AUTHORITY
 JABARA AIRPORT
SANITARY SEWER NO. 1
 AIRFIELD PAVEMENT REHABILITATION
 PRIVATE PROJECT NO. 2111 PPS (07261)

PECC
 PROFESSIONAL ENGINEERING CONSULTANTS, P.A.
 303 SOUTH OPEKA WICHITA, KS 67202
 316-262-2891 www.pec.com

Designed By: MDK
 Drawn By: CSL
 Job No. 35-09661-019
 Date: July 2011

Sheet 3 of 6