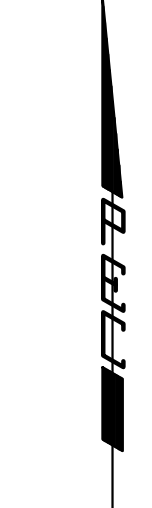
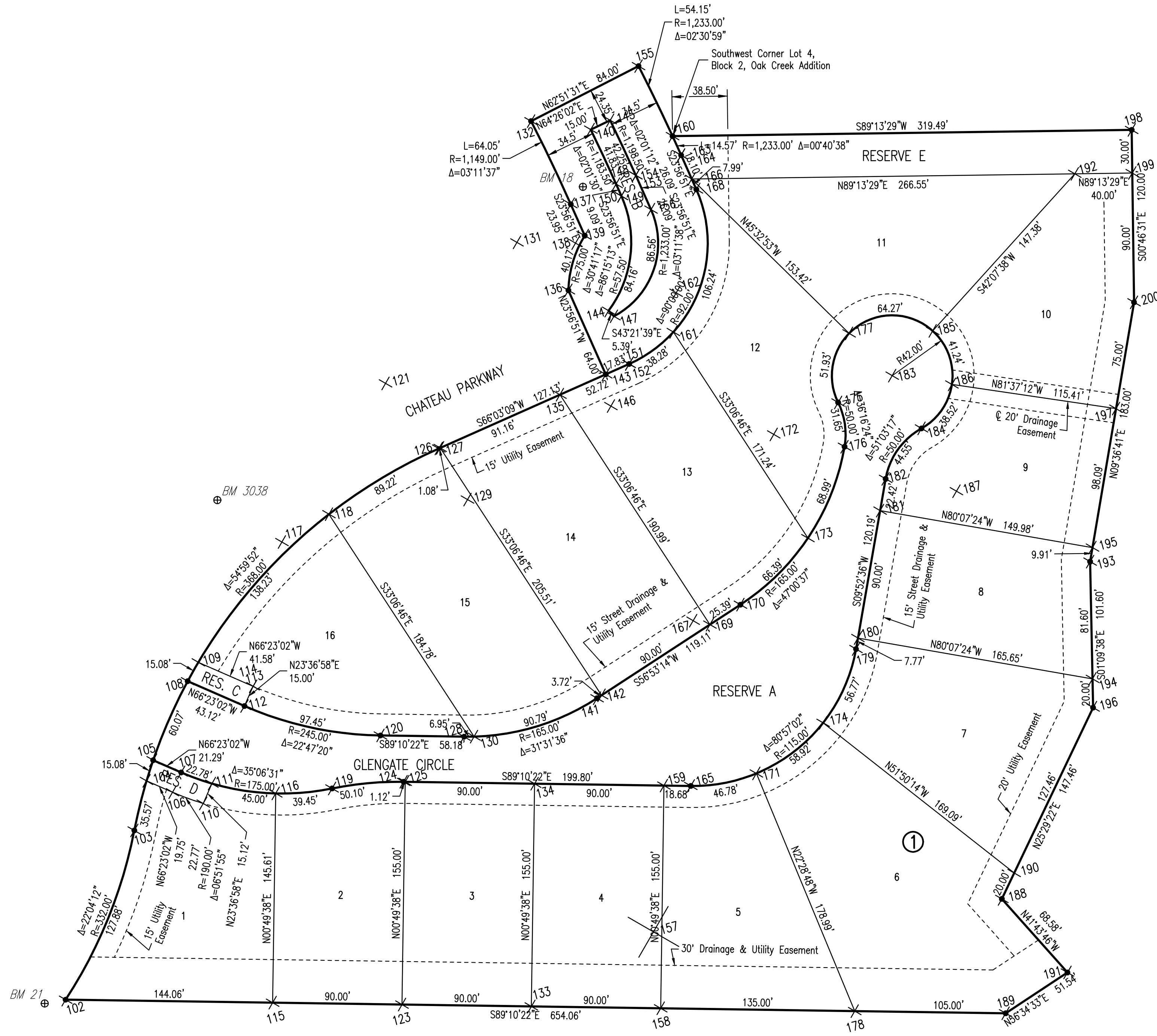


# GLENVIEW

AN ADDITION TO WICHITA, SEDGWICK COUNTY, KANSAS



SCALE: 1" = 50'

• = 1/2" REBAR W/PEC CAP UNLESS OTHERWISE NOTED

Pt. #	Northing	Easting
100	386093.8082	2371065.9097
101	386188.0764	2371486.4955
102	386006.6514	2371764.5404
103	386124.4179	2371812.3353
104	386158.9417	2371820.8301
105	386173.3012	2371825.4310
106	386151.0290	2371838.9277
107	386164.7728	2371844.9368
108	386228.2762	2371849.4673
109	386241.4043	2371856.8845
110	386143.1789	2371860.2827
111	386157.0306	2371866.3389
112	386211.0015	2371888.9776
113	386224.7452	2371894.9866
114	386224.7453	2371894.9867
115	386004.5717	2371908.5892
116	386150.1708	2371910.6913
117	386325.1167	2371915.0427
118	386344.4840	2371947.7645
119	386153.6253	2371949.9098
120	386190.5084	2371983.5890
121	386435.4829	2371987.1258
122	385925.2968	2371996.3328
123	386003.2725	2371998.5799
124	386158.2725	2371999.6964
125	386158.2564	2372000.8174
126	386390.1781	2372024.1355
127	386390.6179	2372025.1258
128	386189.6686	2372041.7580
129	386354.6514	2372044.1400
130	386189.7147	2372048.7070
131	386533.6179	2372078.5627
132	386617.9674	2372088.3862
133	386001.9733	2372088.5705
134	386156.9571	2372090.8080
135	386427.6215	2372108.4420
136	386500.2725	2372114.3474
137	386560.1889	2372116.0003
138	386533.0997	2372119.2780
139	386538.2999	2372125.7219
140	386612.1123	2372129.8802
141	386216.4481	2372134.2779
142	386218.4814	2372137.3954
143	386441.7818	2372140.3251
144	386486.1039	2372142.3018
145	386618.5857	2372143.4119
146	386419.7200	2372143.9058
147	386482.1867	2372146.0010
148	386574.1925	2372147.5304
149	386565.8877	2372151.2188
150	386565.8865	2372151.2194

Pt. #	Northing	Easting
151	386449.0193	2372156.6209
152	386449.0196	2372156.6215
153	386580.2810	2372161.2391
154	386580.2800	2372161.2396
155	386656.2872	2372163.1364
156	386556.4390	2372171.8282
157	386053.8567	2372173.5072
158	386000.6741	2372178.5611
159	386155.6579	2372180.7987
160	386607.5693	2372186.7749
161	386471.2833	2372187.4156
162	386498.5597	2372189.3279
163	386594.2846	2372192.7693
164	386594.2837	2372192.7697
165	386155.3883	2372199.4772
166	386577.7470	2372200.1142
167	386270.3763	2372201.1373
168	386570.4426	2372203.3583
169	386267.6476	2372212.7790
170	386281.5167	2372234.0437
171	386164.1147	2372245.1086
172	386399.9942	2372257.2014
173	386327.8506	2372280.9642
174	386199.3182	2372291.5572
175	386422.2233	2372301.9883
176	386391.4178	2372306.4604
177	386470.3087	2372309.6281
178	385998.7252	2372313.5470
179	386250.6505	2372314.4329
180	386258.3030	2372315.7653
181	386346.9691	2372331.2029
182	386369.0605	2372335.0492
183	386440.8957	2372339.6094
184	386404.1860	2372360.0153
185	386472.0453	2372367.7821
186	386434.7748	2372381.1610
187	386360.4841	2372384.3081
188	386076.7828	2372415.9017
189	385997.2095	2372418.5361
190	386094.8361	2372424.5086
191	386025.5991	2372461.5517
192	386581.3536	2372466.6443
193	386311.4731	2372477.3043
194	386229.8899	2372478.9570
195	386321.2435	2372478.9588
196	386209.8940	2372479.3621
197	386417.9558	2372495.3361
198	386611.8920	2372506.2347
199	386581.8948	2372506.6406
200	386491.9030	2372507.8583

BLOCK	CITY DATUM	N.G.V.D.
LOT 6	197.6	1385.0
LOT 7	191.6	1379.0
LOTS 8-10	197.6	1379.0

Correct City Datum Elev. = 191.6 per Affidavit/Certificate of Correction recorded at Film 2928, Page 6044 04/24/2012.

Sowed 05-30-2012 10:57:22 AM by RFL  
 Plot Scale 1:50 06-01-2012 11:39:59 AM by ROB F. JOHNSON  
 C:\2011\11339\003\11339-003-C06-Plat

No.	Revision	By	Date
<b>GLENVIEW</b> WATER DISTRIBUTION SYSTEM IMPROVEMENTS <b>PLAT (GLENVIEW)</b> GARY JANZEN, P.E. - INTERIM CITY ENGINEER CITY OF WICHITA PROJECT NO. 448-90552			
<b>PEC</b> PROFESSIONAL ENGINEERING CONSULTANTS, P.A. 303 SOUTH TOPEKA WICHITA, KS 67202 316-262-2691 www.pec1.com			
Designed by	MDK	Job No.	35-11339-002
Drawn by	JAN, CSL	Date	August 2011
			Sht. 6 of 11