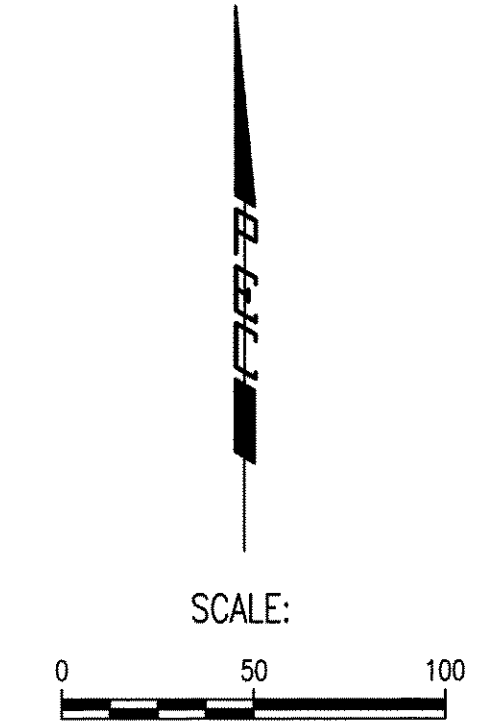
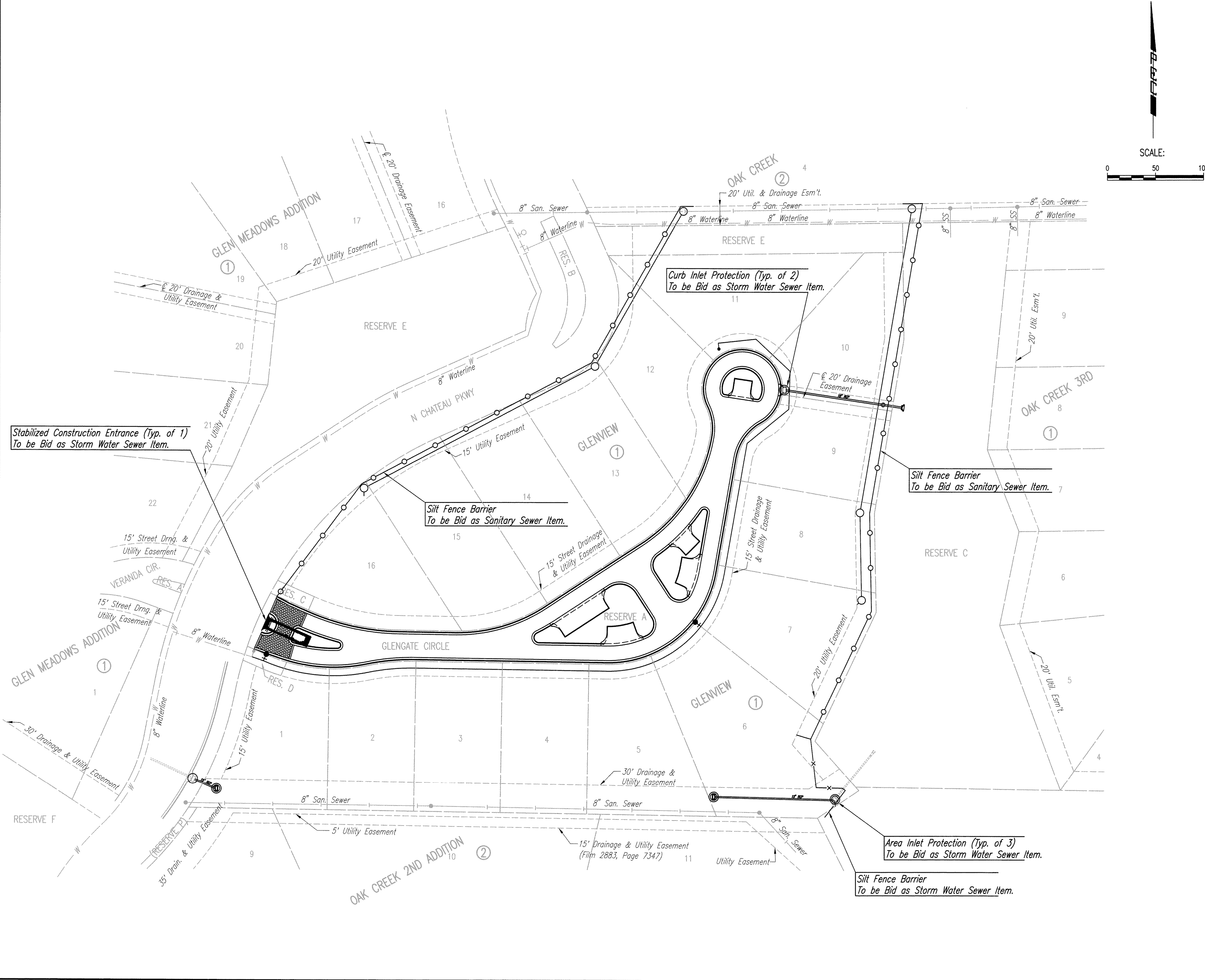


Saved: 06-04-2012 10:51:29 AM by RFL
 Plot Scale: 1:50 06-04-2012 10:53:11 AM by BEJ
 Q:\2011\1139\03\1139-003-007-Erosion Control Plan

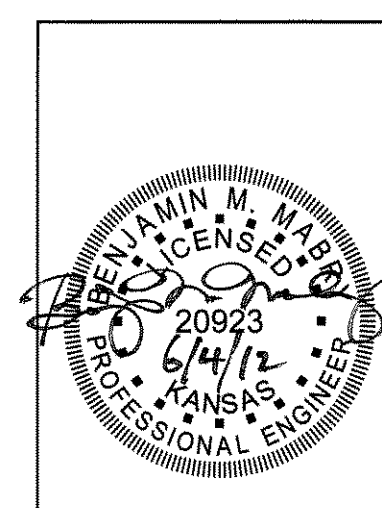


- LEGEND**
- SILT FENCE (TO BE BID WITH WATERLINE PROJECT)
 - SILT FENCE (TO BE BID WITH SANITARY SEWER PROJECT)
 - x— SILT FENCE (TO BE BID STORM WATER SEWER PROJECT)
 - =— DITCH CHECKS (WATERLINE)
 - =— DITCH CHECKS (SANITARY SEWER)
 - x— DITCH CHECKS (STORM WATER SEWER)
 - PROPOSED CURB INLET PROTECTION
 - PROPOSED AREA INLET PROTECTION
 - ▭ STABILIZED CONSTRUCTION ENTRANCE
 - #— EXISTING WATER MAIN
 - #— PROPOSED WATER MAIN
 - #— EXISTING WATER VALVE
 - #— PROPOSED WATER VALVE
 - #— EXISTING FIRE HYDRANT
 - #— PROPOSED FIRE HYDRANT
 - #— EXISTING FLUSHING HYDRANT
 - #— EXISTING BLOW-OFF VALVE
 - #— PROPOSED BLOW-OFF VALVE
 - #— EXISTING SANITARY SEWER
 - #— PROPOSED SANITARY SEWER
 - #— EXISTING SANITARY SEWER w/MANHOLE
 - #— PROPOSED SANITARY SEWER w/MANHOLE
 - #— EXISTING SANITARY SEWER w/CLEAN OUT
 - #— PROPOSED SANITARY SEWER w/CLEAN OUT
 - #— EXISTING STORM WATER SEWER
 - #— PROPOSED STORM WATER SEWER
 - #— EXISTING STORM WATER SEWER w/MANHOLE

GENERAL NOTES

1. CONTRACTOR SHALL INSTALL AND MAINTAIN EROSION PROTECTION THROUGHOUT THE ENTIRE PROJECT. THE FOLLOWING QUANTITIES ARE FOR INFORMATION ONLY, AND SHALL BE INCLUDED IN THE EROSION CONTROL LUMP SUM BID ITEMS FOR EACH RESPECTIVE PART. EROSION PROTECTION SHALL BE INCLUDED IN THE BID AS FOLLOWS:

SANITARY SEWER	
SILT FENCE BARRIER	1,223 L.F.
STORM WATER SEWER	
SILT FENCE BARRIER	130 L.F.
CURB INLET PROTECTION	2 EACH
AREA INLET PROTECTION	3 EACH
STABILIZED CONSTRUCTION ENTRANCE	1 EACH
2. THE EROSION CONTROL DEVICES SHOWN ON THIS SHEET ARE CONSIDERED MINIMUM STANDARDS. WHENEVER SEDIMENT ENTERS THE STREETS, STORM SEWERS, DITCHES, OR PONDS, CONTRACTOR WILL INSTALL ADDITIONAL DEVICES, AS NEEDED, TO CORRECT THE PROBLEM.
3. THE EROSION CONTROL DEVICES SHOWN HEREON MUST BE IN PLACE AT ALL TIMES DURING CONSTRUCTION UNTIL SUCH TIME AS THE SITE IS REESTABLISHED WITH PAVING OR GRASS. TEMPORARY OR PERMANENT SEEDING AND MULCH WILL BE INSTALLED WHEN EARTHWORK ACTIVITIES CEASE IN AN AREA FOR 14 DAYS OR MORE.
4. ANY MUD INADVERTENTLY TRACKED ONTO ANY STREET SHALL BE CLEANED UP BY THE CONTRACTOR, AT THE END OF EACH DAY'S WORK, OR AS DIRECTED BY THE FIELD ENGINEER.
5. CONTRACTOR TO FURNISH A TRUCK WASH-OUT PIT TO BE PLACED AT A CONVENIENT LOCATION THAT DOES NOT CONFLICT WITH CONSTRUCTION. CONTRACTOR SHALL CLEAN OUT AND BACKFILL PIT PRIOR TO FINAL INSPECTION. LOCATION SHALL BE APPROVED BY THE FIELD ENGINEER.



No.	Revision	By	Date
GLENVIEW WATER DISTRIBUTION SYSTEM IMPROVEMENTS EROSION CONTROL PLAN GARY JANZEN, P.E. - INTERIM CITY ENGINEER CITY OF WICHITA PROJECT NO. 448-90552			
		PROFESSIONAL ENGINEERING CONSULTANTS, P.A. 303 SOUTH TOPEKA WICHITA, KS 67202 316-262-2691 www.pec1.com	
Designed by	MDK	Job No.	35-11339-002
Drawn by	JAN, CSL	Date	August 2011
			Sht. 7 of 11