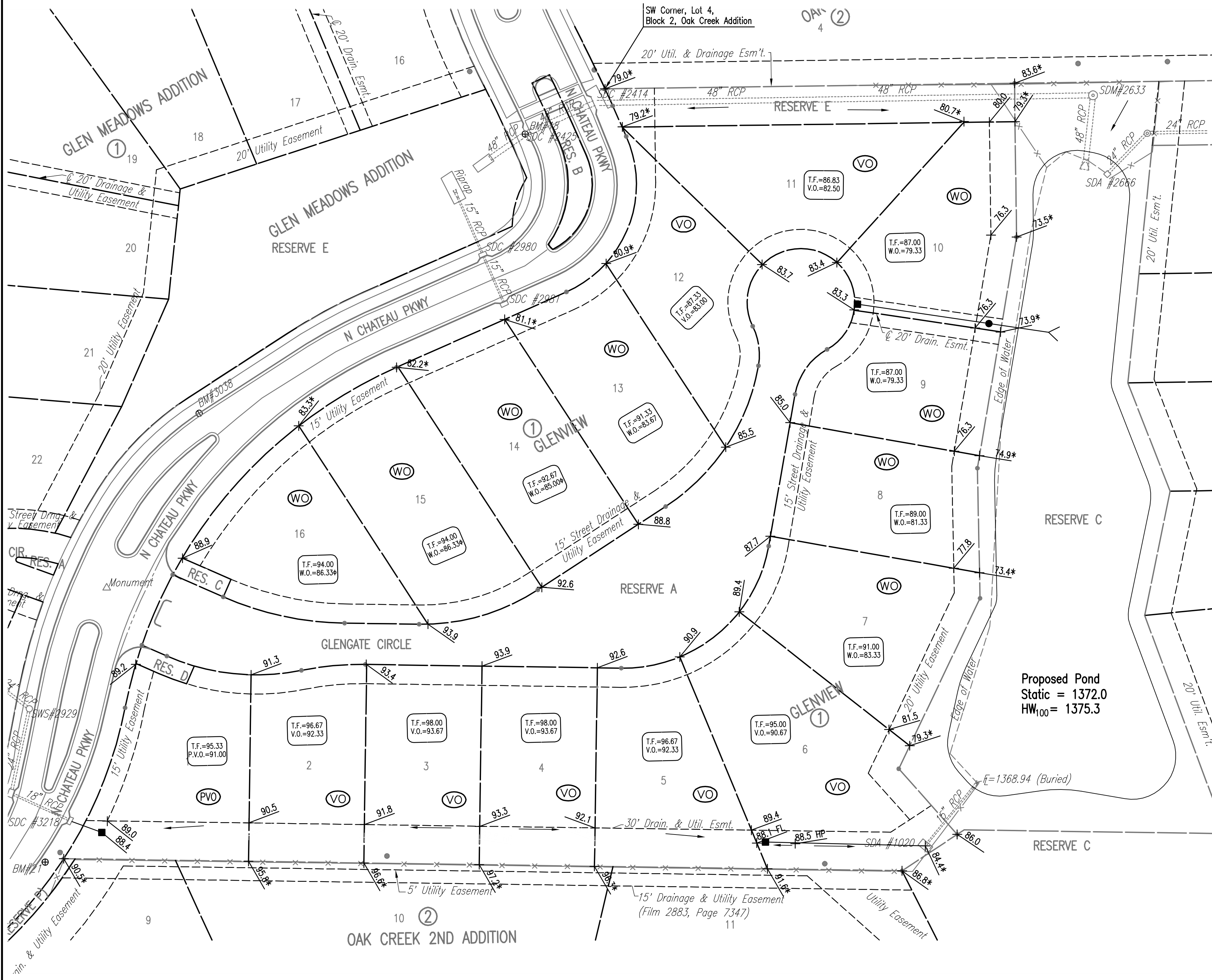
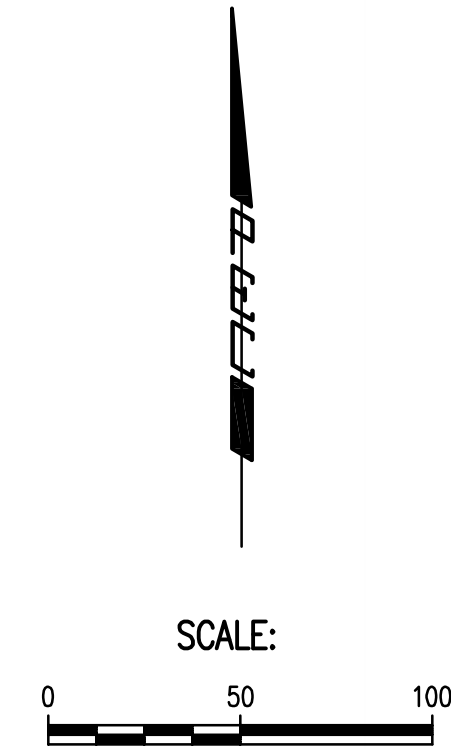


# GLENVIEW

## AN ADDITION TO WICHITA, SEDGWICK COUNTY, KANSAS

### FOUR-CORNER PLAN



- LEGEND**
- SPOT ELEVATION
  - HIGH POINT ELEVATION
  - MATCH EXISTING ELEVATION
  - STORM SEWER AND INLET
  - STORM SEWER AND MANHOLE
  - VIEW-OUT BASEMENT
  - VIEW-OUT BASEMENT
  - VIEW-OUT BASEMENT
- ADD 1300 TO ELEVATIONS FOR N.G.V.D. DATUM.  
 ♦ EXTENDED FOOTINGS MAY BE NECESSARY.

Proposed Pond  
 Static = 1372.0  
 HW<sub>100</sub> = 1375.3

MINIMUM PAD ELEVATIONS (LOWEST OPENING) SHALL BE AS FOLLOWS:		
BLOCK	CITY DATUM	N.G.V.D.
BLOCK 1	197.6	1385.0
LOT 6	191.6	1379.0
LOT 7	191.6	1379.0
LOTS 8-10	191.6	1379.0

Correct City Datum Elev. = 191.6 per Affidavit/Certificate of Correction recorded at Film 2928, Page 6044 04/24/2012.

Served 06-04-2012 6:36:09 AM by BJS  
 Plot Scale 1:50 06-04-2012 5:28:27 PM by BILL J. SEKSON  
 G:\2011\11339\004\11339-004-05C-4 Corner

No.	Revision	By	Date
	GLENVIEW STORM WATER SEWER NO. 663		
<b>FOUR CORNER LOT GRADING PLAN</b>			
GARY JANZEN, P.E. - INTERIM CITY ENGINEER CITY OF WICHITA PROJECT NO. 468-84619			
PROFESSIONAL ENGINEERING CONSULTANTS, P.A. 303 SOUTH TOPEKA WICHITA, KS 67202 316-262-2691 www.pec1.com			
Designed by	BMM, JAG	Job No.	35-11339-004
Drawn by	BJS	Date	March 2012
			Sht. 5 of 20