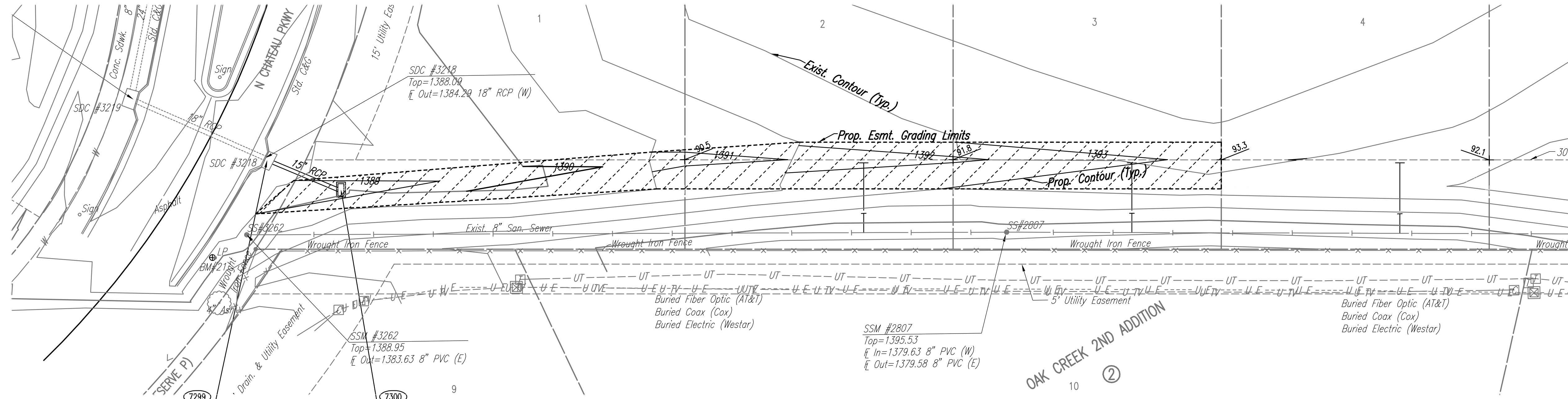


PLAN	CHECKED	DATE
	CHECKED	

PROFILE	CHECKED	DATE
	CHECKED	

Saved: 06-04-2012 7:50:59 AM by BUS
 Plot Scale: 1:20 06-04-2012 5:33:06 PM by BUS
 G:\2011\11339\004\11339-004-086-PLAN AND PROFILE-SWS LINE NO 3

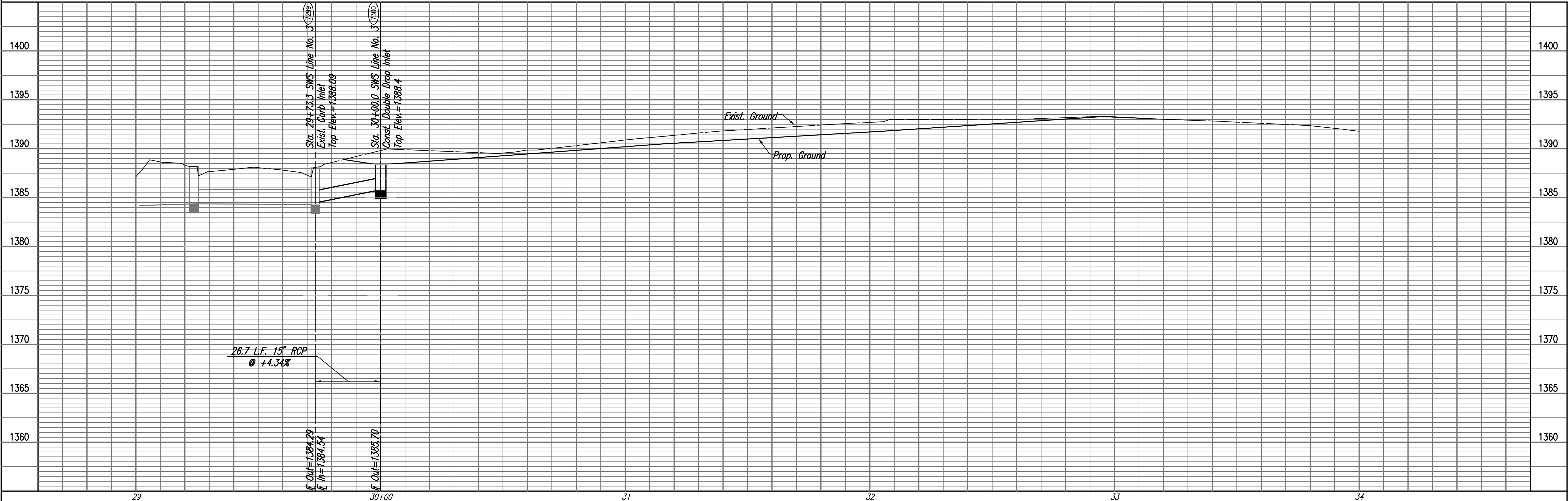


Sta. 29+73.3 SWS Line No. 3
 Exist. Curb Inlet
 Exist. Top Elev.=1388.09
 Install 26.7 L.F. 15" RCP (SE)
 See Curb Inlet Connection Note,
 This Sheet.

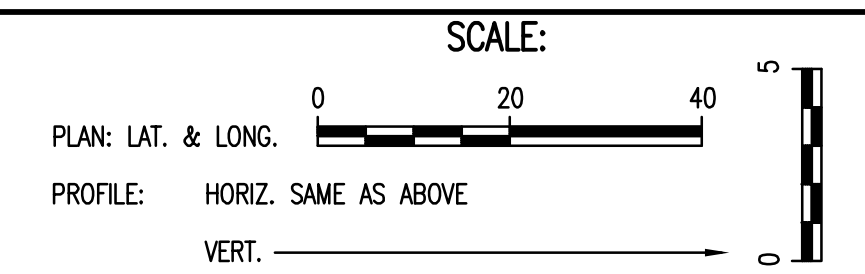
Sta. 30+00.0 SWS Line No. 3
 Const. Double Drop Inlet
 L=4'-0", W=2'-0"
 Top Elev.=1388.4
 See Sheet No. 11.

COORDINATE LIST		
POINT	NORTH	EAST
7299	386,036.5272	2,371,768.8060
7300	386,026.2362	2,371,793.4430

7299 = COORDINATE POINT NO.
 SEE SHEET NO. 4 FOR PLAT COORDINATES



Area to be Graded at Lump Sum Cost for "Easement Grading".



CURB INLET CONNECTION:
 PRIOR TO CONSTRUCTION CONTRACTOR SHALL VERIFY HORIZONTAL AND VERTICAL LOCATION AND SIZE OF EXISTING SWS STRUCTURE AND CONNECTIONS AND REPORT THESE FINDINGS TO THE ENGINEER SO THAT ANY NECESSARY ADJUSTMENTS CAN BE MADE. REMOVE FLOOR SHAPING AS NECESSARY. INSTALL NEW PIPE, CUT FLUSH WITH INSIDE WALL OF INLET, AND GROUT IN PLACE WITH NON-SHRINK GROUT. INSTALL NEW FLOOR SHAPING. THIS WORK SHALL BE SUBSIDIARY TO "15" RCP".

GLENNVIEW
 STORM WATER SEWER NO. 663

SWS LINE NO. 3

DESIGNED BY: BMM, JAG
 DRAWN BY: BUS

Job No. 35-11339-004
 Date March 2012

PROFESSIONAL ENGINEERING CONSULTANTS, P.A.
 303 SOUTH TOPEKA WICHITA, KS 67202
 316-262-2691 www.pec.com

GARY JANZEN, P.E. - INTERIM CITY ENGINEER
 CITY OF WICHITA PROJECT NO. 468-84819

Sheet 8 of 20