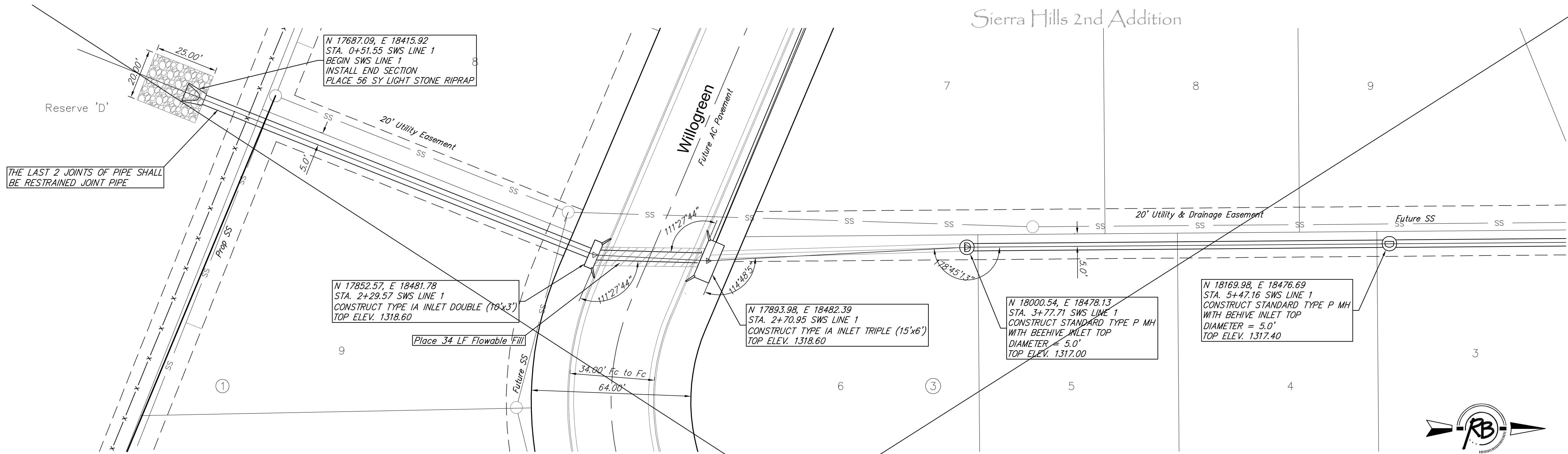


Sierra Hills 2nd Addition



THE LAST 2 JOINTS OF PIPE SHALL BE RESTRAINED JOINT PIPE

N 17687.09, E 18415.92
STA. 0+51.55 SWS LINE 1
BEGIN SWS LINE 1
INSTALL END SECTION
PLACE 56 SY LIGHT STONE RIPRAP

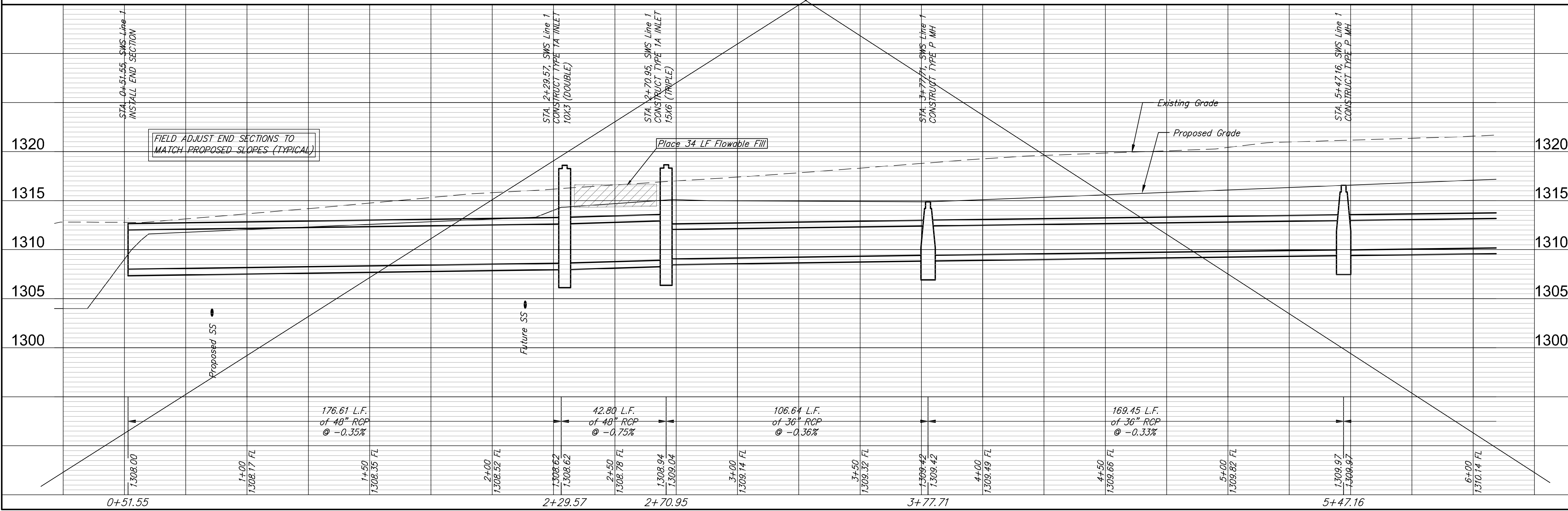
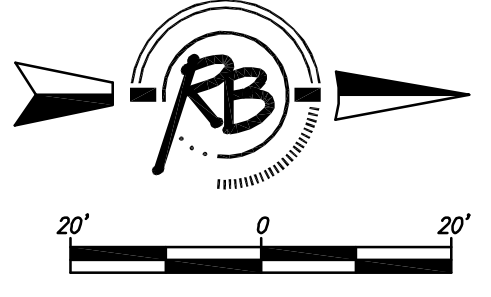
N 17852.57, E 18481.78
STA. 2+29.57 SWS LINE 1
CONSTRUCT TYPE IA INLET DOUBLE (10x3)
TOP ELEV. 1318.60

N 17893.98, E 18482.39
STA. 2+70.95 SWS LINE 1
CONSTRUCT TYPE IA INLET TRIPLE (15x6)
TOP ELEV. 1318.60

N 18000.54, E 18478.13
STA. 3+77.71 SWS LINE 1
CONSTRUCT STANDARD TYPE P MH
WITH BEEHIVE INLET TOP
DIAMETER = 5.0'
TOP ELEV. 1317.00

N 18169.98, E 18476.69
STA. 5+47.16 SWS LINE 1
CONSTRUCT STANDARD TYPE P MH
WITH BEHIVE INLET TOP
DIAMETER = 5.0'
TOP ELEV. 1317.40

This Sheet is not Included with this Contract



FIELD ADJUST END SECTIONS TO MATCH PROPOSED SLOPES (TYPICAL)

REVISIONS
 REVISION DATE
 MAY 9, 2012
 EUGENIE J. GIBSON
 PROJECT NUMBER: 462-94615
 DRAWING FILE: Engineering Bases [SWS Line 3]
SIERRA HILLS 2ND ADDITION
SWS Line 1
WICHITA, KANSAS
 RB JOB: 3268E
 SHEET: 4 OF 43