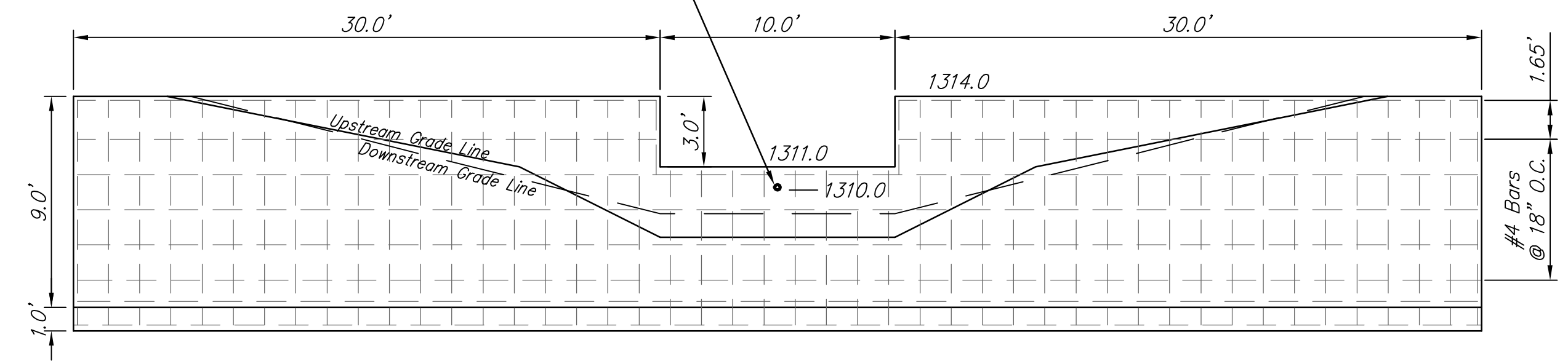
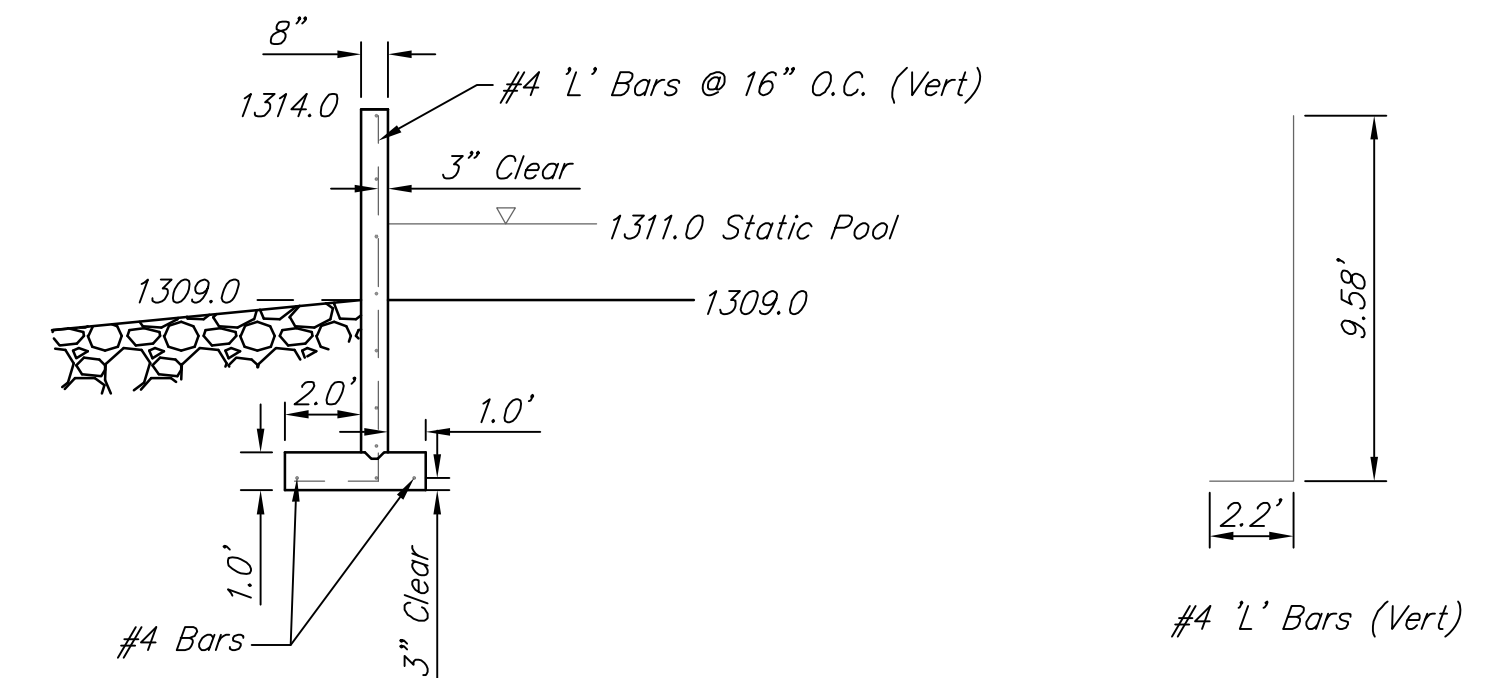


CONSTRUCT WEIR WITH 3" DIA HOLE. INSTALL SNOT OR APPROVED EQUAL. SEE SHEET 32 FOR DETAILS. SNOT COST TO BE SUBSIDIARY TO BID ITEM FOR POND 3 WEIR. FLOW LINE OF HOLE = 1310.00

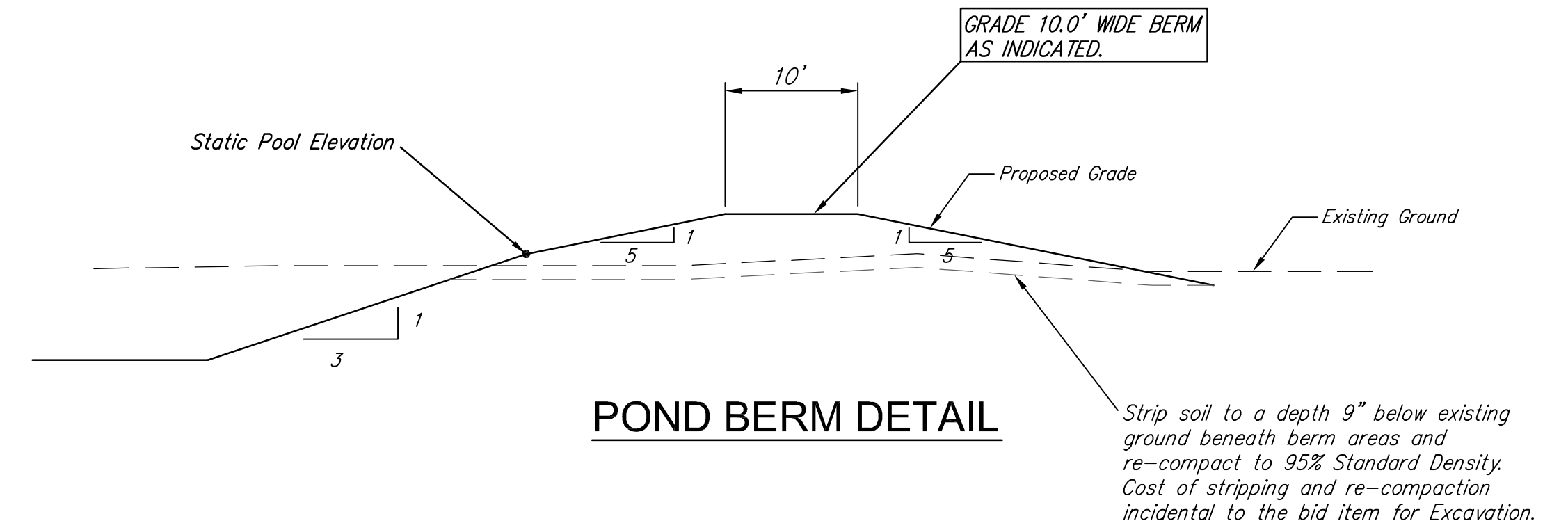


**Pond 3 Weir Wall Detail**

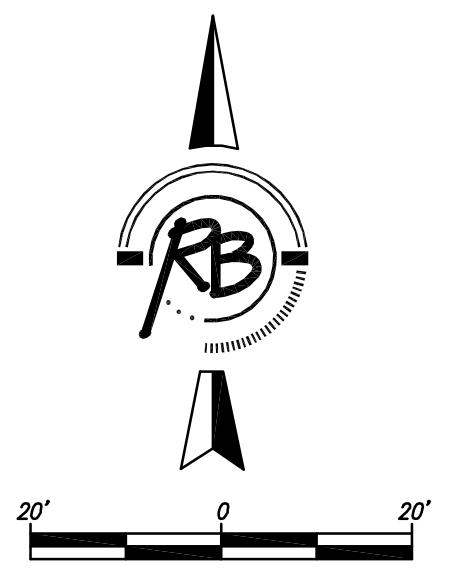
Air Entrained Concrete:  $F_c = 4000$  psi @ 28 days  
Reinforcing:  $F_y = 60000$  psi  
Cover over Reinforcing is 2" Clear unless otherwise indicated



**Weir Wall Profile**



**POND BERM DETAIL**



<b>Sierra Hills 2nd Addition Pond 3 Weir WICHITA, KANSAS</b>		DESIGN EJG DRAWN EJG REVIEW EJG UTILITY May 9, 2012	SHEET 25 OF 43
<b>Ruggles &amp; Bohm, P.A.</b> Engineering, Surveying, Land Planning 924 North Main Wichita, Kansas 67203 www.rbkansas.com		(316) 264-8008 (316) 264-4621 fax E-mail: info@rbkansas.com	PROJECT NUMBER 468-84815 DATE June 7, 2012
DRAWING FILE Engineering Base {Pond 3 Weir}		PROJECT NUMBER 468-84815	