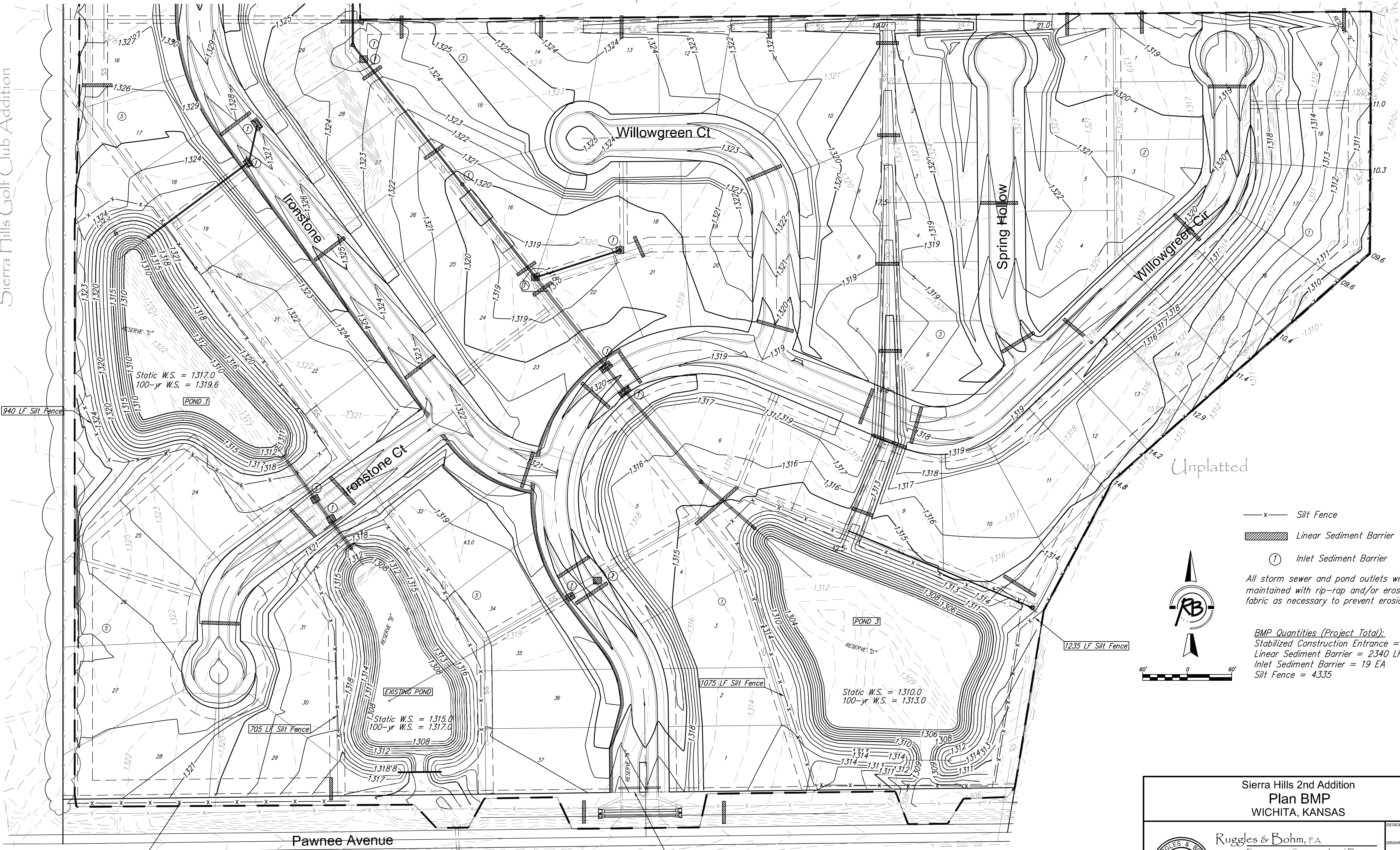


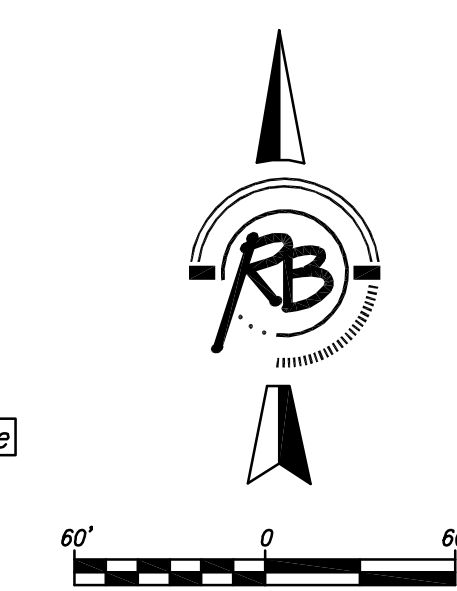
Unplatted



- x — Silt Fence
- ▨ Linear Sediment Barrier
- ① Inlet Sediment Barrier

All storm sewer and pond outlets will be maintained with rip-rap and/or erosion control fabric as necessary to prevent erosion transport.

**BMP Quantities (Project Total):**  
 Stabilized Construction Entrance = 1 EA  
 Linear Sediment Barrier = 2340 LF  
 Inlet Sediment Barrier = 19 EA  
 Silt Fence = 4335



Sierra Hills 2nd Addition  
**Plan BMP**  
 WICHITA, KANSAS

**Ruggles & Bohm, P.A.**  
 Engineering, Surveying, Land Planning  
 924 North Main (316) 264-8008  
 Wichita, Kansas 67203 (316) 264-4621 fax  
 www.rbkansas.com E-mail: info@rbkansas.com

DRAWING FILE: Engineering Base [Addition Bubble Map] PROJECT NUMBER: 468-84815 DATE: June 7, 2012

DESIGN	EJG	REV. JOB	326BE
DRAWN	EJG	SHEET	34
REVIEW		DATE	May 9, 2012
UTILITY		OF	43

380 LF SILT FENCE

Pawnee Avenue

Stabilized Constructin Entrance

1235 LF Silt Fence

1075 LF Silt Fence

705 LF Silt Fence

940 LF Silt Fence

Static W.S. = 1317.0  
 100-yr W.S. = 1319.6

Static W.S. = 1315.0  
 100-yr W.S. = 1317.0

Static W.S. = 1310.0  
 100-yr W.S. = 1313.0