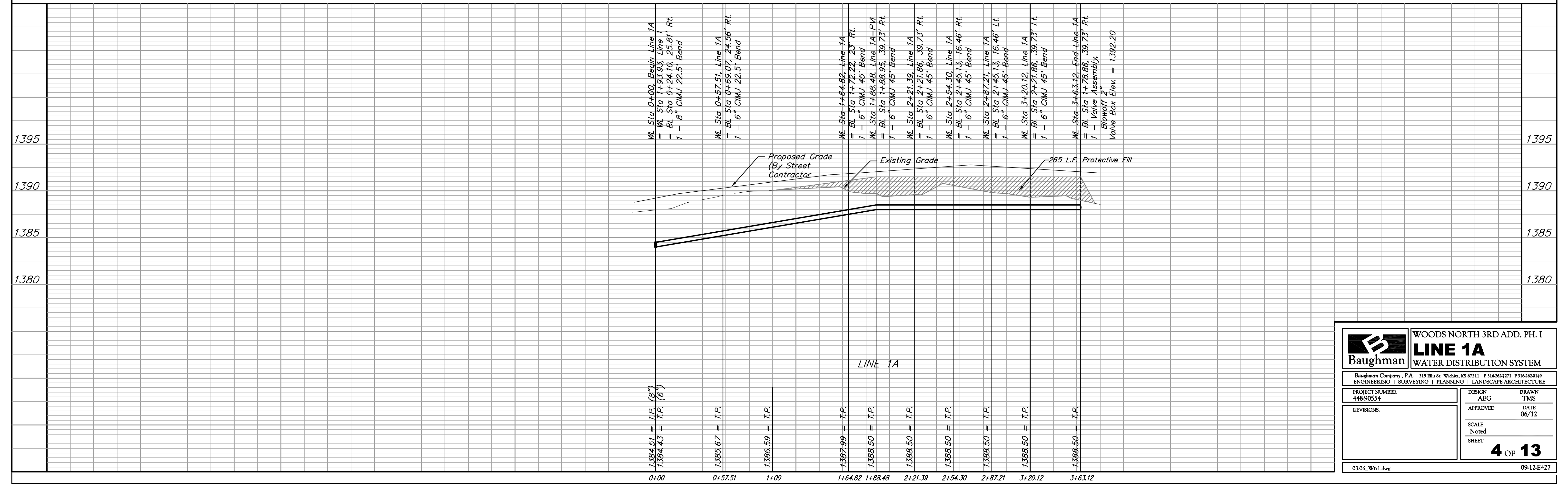
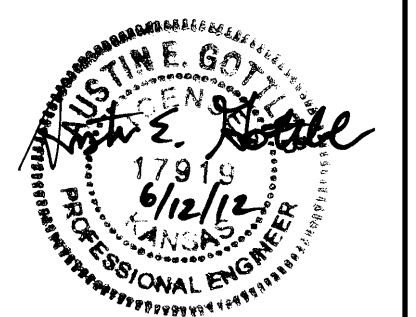
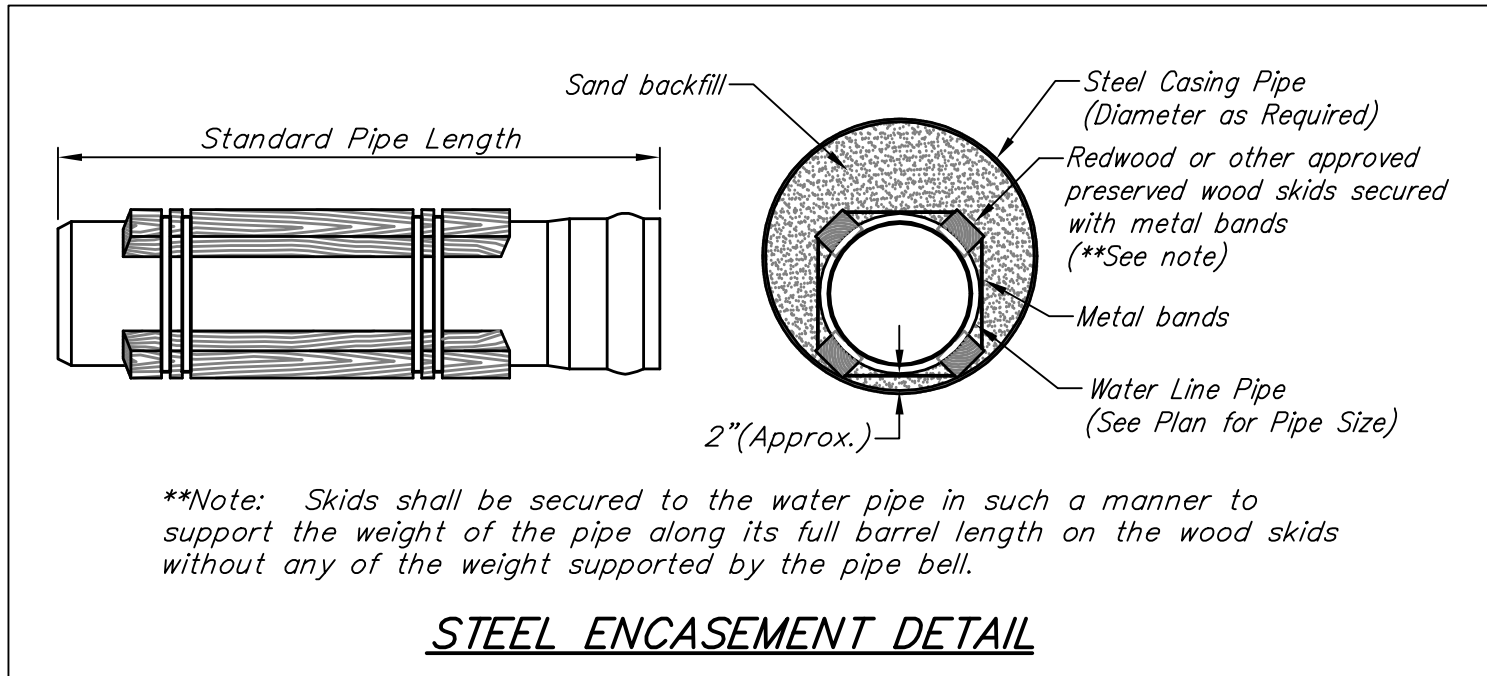
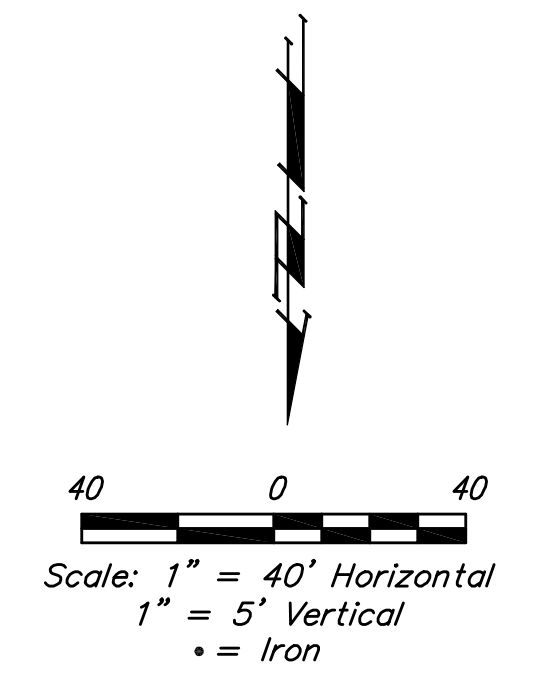
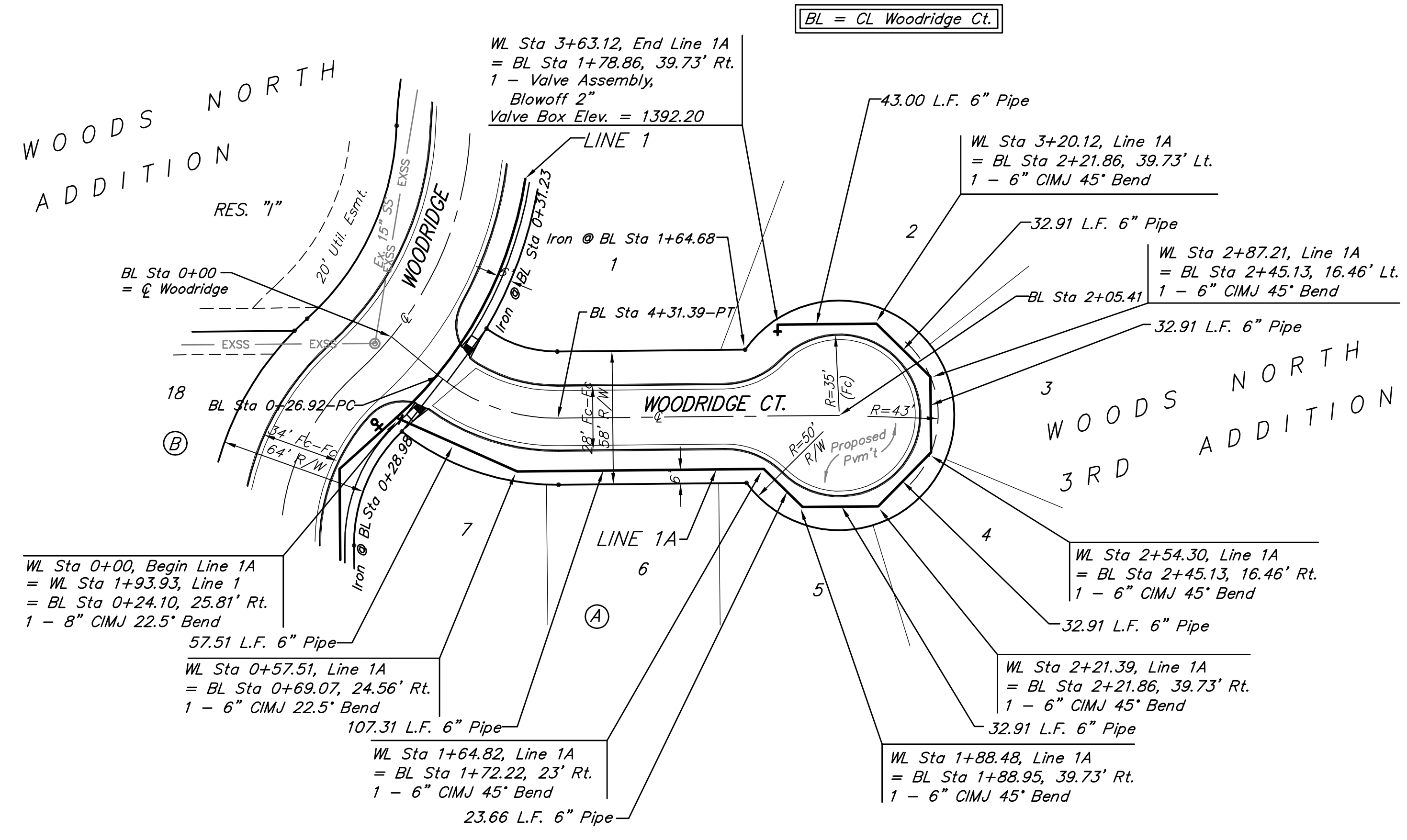


BENCHMARKS:
BM #1:
 RR Spike in CATV Pole, 85' east and 77' south of SE corner of Woods North 3rd Addition.
 Elev. = 1383.00 NAVD88

BM #2:
 "□" cut at centerline of inlet adjacent to Lot 29, Block A, Woods North 2nd Addition.
 Elev. = 1387.12 NAVD88

BM #3:
 Cross cut on north end of west headwall 137.5' south & 12' west of the intersection of 29th St N & 127th St E.
 ELEV. = 1382.45 NAVD88



		WOODS NORTH 3RD ADD. PH. I	
		LINE 1A	
Baughman Company, P.A. 315 Ellis St. Wichita, KS 67211 P 316-262-7271 F 316-262-0149		ENGINEERING SURVEYING PLANNING LANDSCAPE ARCHITECTURE	
PROJECT NUMBER 448-90554	DESIGN AEG	DRAWN TMS	
APPROVED	DATE 06/12	SCALE Noted	
REVISIONS:	SHEET		4 OF 13
03-06_Wtr1.dwg		09-12-E427	