

BENCHMARKS:
 BM #1:
 RR Spike in CATV Pole, 85' east and 7' south of SE corner of Woods North 3rd Addition.
 Elev. = 1383.00 NAVD88

BM #2:
 "□" cut at centerline of inlet adjacent to Lot 29, Block A, Woods North 2nd Addition.
 Elev. = 1387.12 NAVD88

BM #3:
 Cross cut on north end of west headwall 137.5' south & 12' west of the intersection of 29th St N & 127th St E.
 ELEV. = 1382.45 NAVD88

CAUTION!
 Ex. 6" Steel Conoco Pipeline Crossing

The contractor shall not operate equipment or perform construction within the pipeline easement without a ConocoPhillips representative on-site. Coordination of all equipment crossings and construction within the pipeline easement shall be coordinated with the pipeline representative, Scott Salisbury, 681-2081.

BL = CL 27th St. N

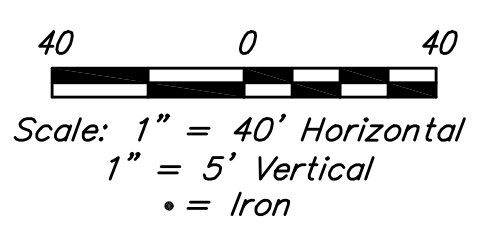
WL Sta 6+14.61, Line 2 = BL Sta 6+63.25, 26' Lt.
 1 - Valve Assembly,
 L = 5'
 Bury Line Elev. = 1393.20
 Valve Box Elev. = 1393.30

WL Sta 7+67.19, Line 2 = BL Sta 7+99.15, 26' Lt.
 1 - Valve Assembly,
 Anchored 8", Special
 Valve Box Elev. = 1394.60

WL Sta 7+87.19 End Line 2 = BL Sta 8+19.15, 26' Lt.
 1 - Valve Assembly,
 Blowoff 2"
 Valve Box Elev. = 1394.90

Curve #3
 Curve Data Based on Waterline
 Rad. = 176' Delta = 30.99 40' Tangent = 83.00'
 Arc = 155.11' L.C. = 150.14' Def. Ft. = 9.76619 Min.

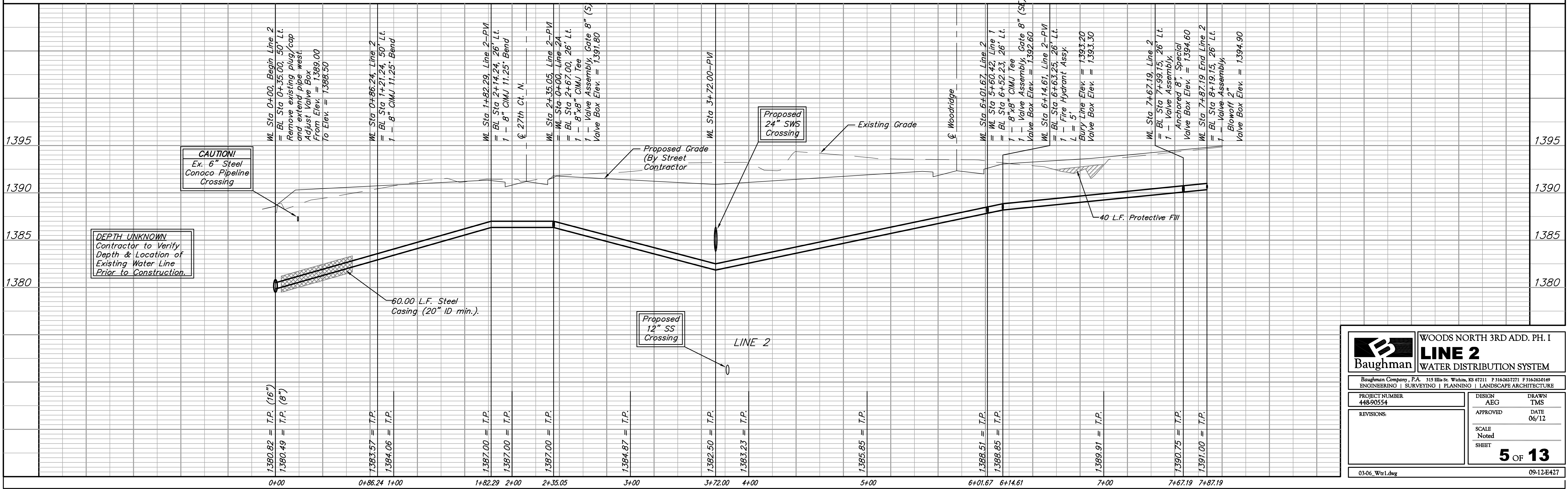
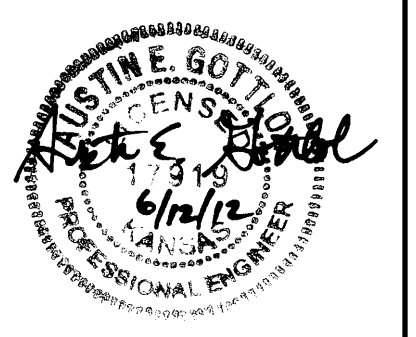
Station	Acc	6' Left	Def	Total Def
5+72.44	-	-	0.0000	0.0000
5+75.00	2.56"	2.65"	0.2500	0.2500
6+00.00	25.00"	25.83"	4.0409	4.2909
6+01.67	1.62"	1.73"	0.7613	4.3522
6+14.61	12.94'	13.38'	2.0622	6.5150
6+25.00	10.39'	10.74'	1.4129	8.3319
6+50.00	25.00"	25.83"	4.0409	12.3728
6+75.00	25.00"	25.83"	4.0409	16.4137
7+00.00	25.00"	25.83"	4.0409	20.4546
7+25.00	25.00"	25.83"	4.0410	24.4956
7+27.55	2.55"	2.64"	0.2454	25.7450



Curve #2
 Curve Data Based on Waterline
 Rad. = 124' Delta = 30.91 47' Tangent = 58.52'
 Arc = 109.35' L.C. = 105.85' Def. Ft. = 13.86148 Min.

Station	Acc	6' Left	Def	Total Def
4+63.08	-	-	0.0000	0.0000
4+75.00	11.02"	11.34"	2.4514	2.4514
5+00.00	25.00"	23.75"	5.4632	8.3146
5+25.00	25.00"	23.75"	5.4632	14.1778
5+50.00	25.00"	23.75"	5.4632	20.0410
5+72.44	22.44"	21.32"	5.1103	25.7553

For radii under 200', contractor shall use short pipe lengths.



Baughman WOODS NORTH 3RD ADD. PH. I
LINE 2
 WATER DISTRIBUTION SYSTEM

Baughman Company, P.A. 315 Ellis St. Wichita, KS 67211 P 316-262-7271 F 316-262-0149
 ENGINEERING | SURVEYING | PLANNING | LANDSCAPE ARCHITECTURE

PROJECT NUMBER: 448-90554
 DESIGN: AEG
 DRAWN: TMS

APPROVED: [Signature]
 DATE: 06/12

REVISIONS:
 SCALE: Noted
 SHEET: 5 OF 13

03-06_Wtr1.dwg 09-12-E427