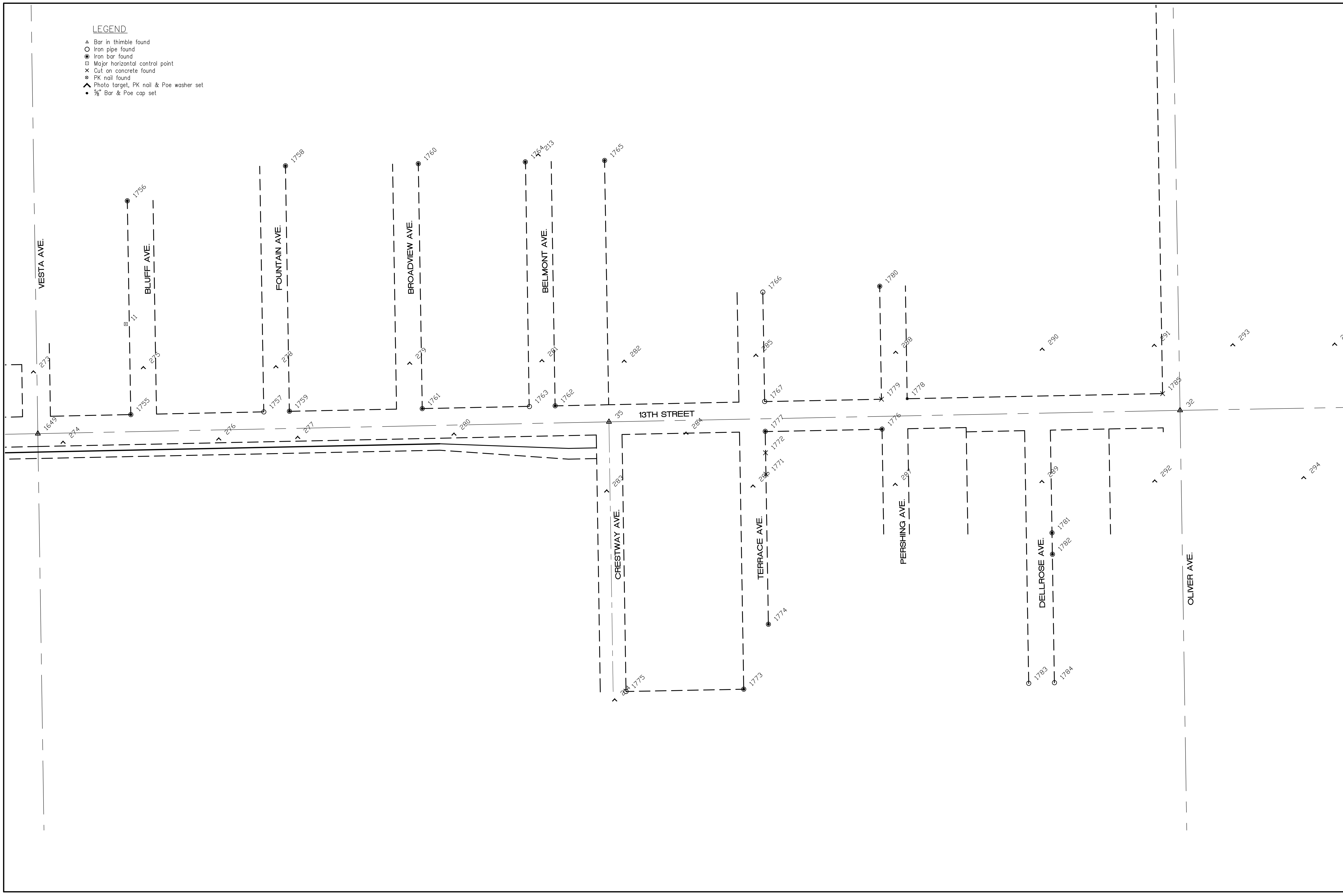
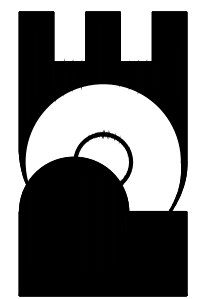


LEGEND

- ▲ Bar in thimble found
- Iron pipe found
- Iron bar found
- Major horizontal control point
- ✕ Cut on concrete found
- PK nail found
- ▲ Photo target, PK nail & Poe washer set
- 3/8" Bar & Poe cap set



FINAL
 Engineer: P. FERGUSON
 Designer: P. FERGUSON
 CITY Job No.: 472-84320 Poe Job No.: 1871
 Date: March, 2012


POE & ASSOCIATES, INC.
CONSULTING ENGINEERS
 5940 E. Central, Suite 200 • Wichita, KS 67208-4242
 Phone: 316/685-4114 • FAX: 316/685-4444

13TH STREET NORTH FROM KANSAS TO OLIVER
STREET & DRAINAGE IMPROVEMENTS
 Survey Data Sheet
CITY OF WICHITA, KANSAS

No.	Date	By	Approved	Revision
1				
2				
3				