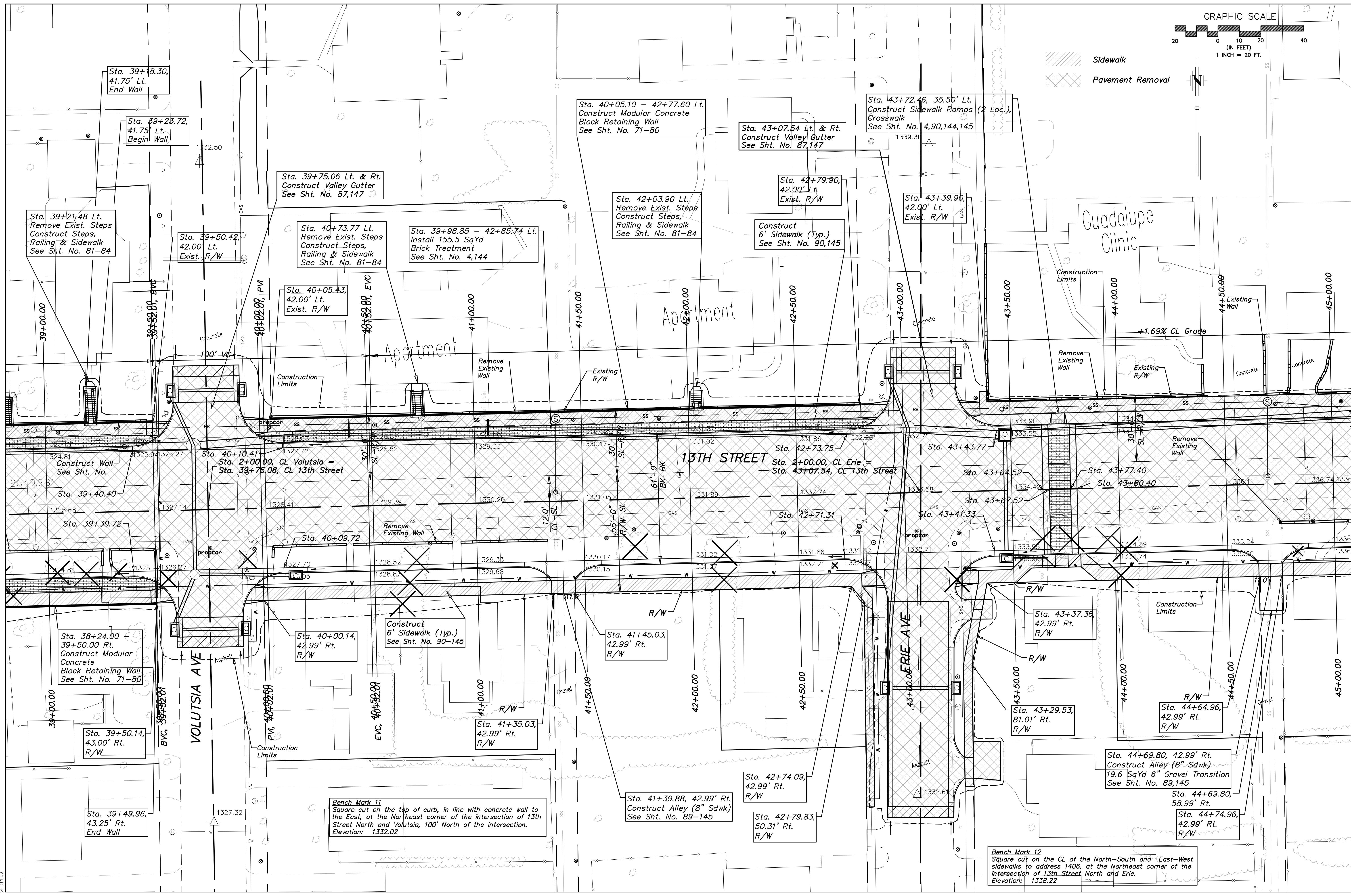
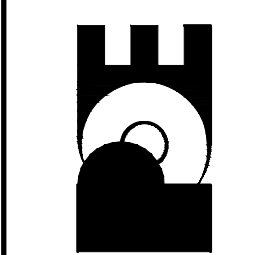


Sidewalk
Pavement Removal



13th STREET NORTH FROM HYDRAULIC TO OLIVER STREET & DRAINAGE IMPROVEMENTS
13th Street Sta. 39+00.00 to Sta. 45+00.00
CITY OF WICHITA, KANSAS
JAMES L. ARMOUR, P.E. - CITY ENGINEER

POE & ASSOCIATES, INC.
CONSULTING ENGINEERS
5940 E. Central, Suite 200 • Wichita, KS 67208-4242
Phone: 316/685-4111 • FAX: 316/685-4444



FINAL
Designed By: PAF / JUU
Drawn By: JUU
Poe Job No.: 1871A
Date: July 2008