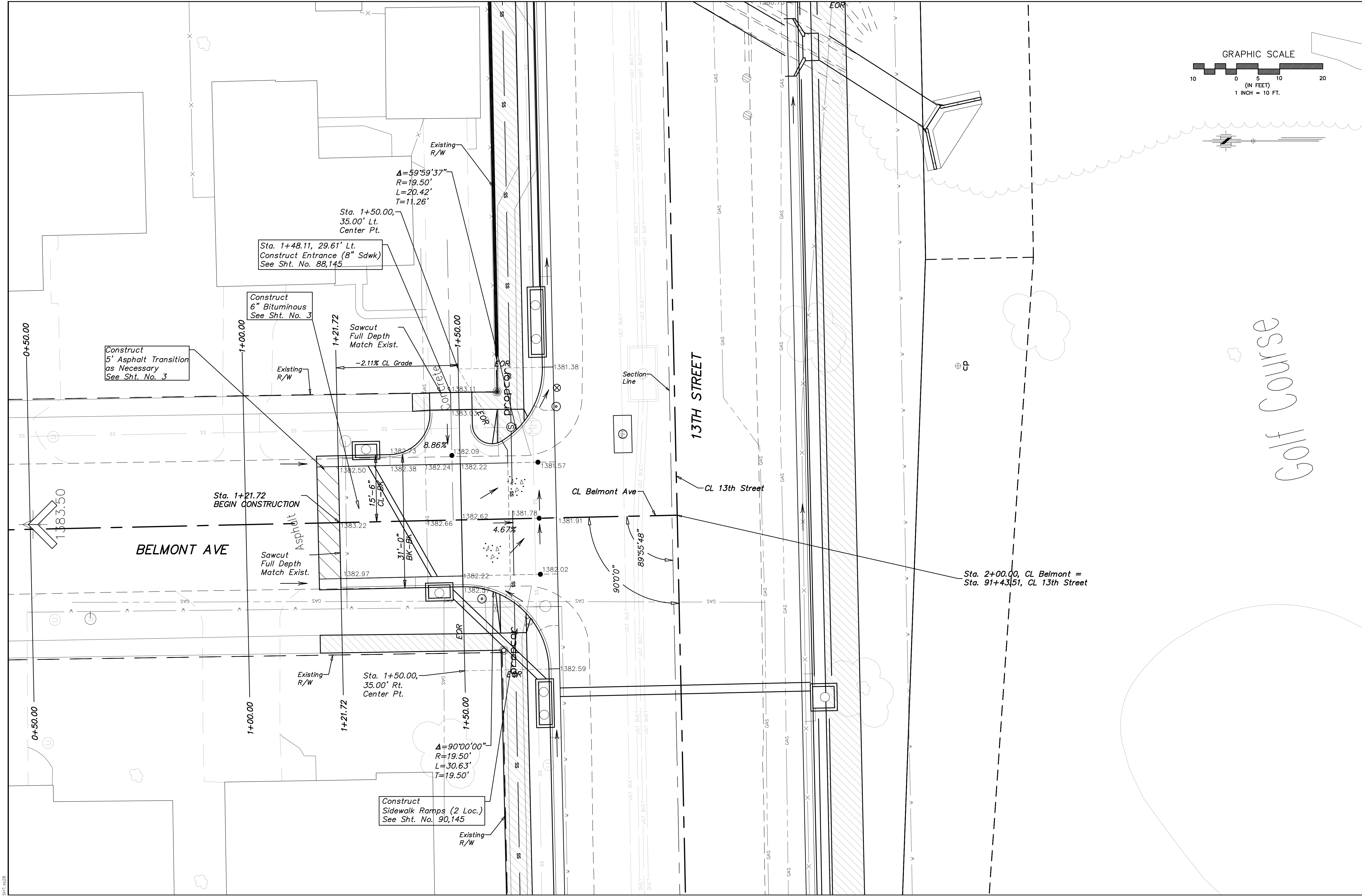


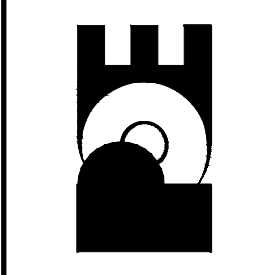
Golf Course



Sta. 2+00.00, CL Belmont = Sta. 91+43.51, CL 13th Street

13th STREET NORTH FROM HYDRAULIC TO OLIVER STREET & DRAINAGE IMPROVEMENTS
Belmont Avenue
CITY OF WICHITA, KANSAS
JAMES L. ARMOUR, P.E. - CITY ENGINEER

POE & ASSOCIATES, INC.
CONSULTING ENGINEERS
5940 E. Central, Suite 200 • Wichita, KS 67208-4242
Phone 316/685-4111 • FAX 316/685-4444



FINAL
Designed By: PAF / JJU
Drawn By: JJU
Poe Job No.: 1871A
Date: July 2008